

# PARTS CATALOGUE



PBMJ



DGBMJ



BNM3



BNC2

**T150** ( B17G ) MALAYSIA

**T150** ( B17H ) MALAYSIA

T150  
PARTS CATALOGUE  
©2025 by Yamaha Motor Co., Ltd.  
1st edition, January 2025  
All rights reserved.  
Any reprinting or unauthorized use  
without the written permission of  
Yamaha Motor Co., Ltd.  
is expressly prohibited.  
Printed in Japan.

# FOREWORD

This Parts Catalogue is related to the parts for the model(s) on the cover page. When you are ordering replacement parts, please refer to this Parts Catalogue and quote both part numbers and part names correctly.

6. The asterisk (\*) before a reference number indicates modified items after the first edition.

1. Modifications or additions which have been made after the issue of the Parts Catalogue will be announced in the Parts News.  
It is advisable that you make the necessary corrections to the Parts Catalogue according to the Parts News.

## 2. Abbreviations

The following abbreviations are used in this Parts Catalogue.

“UR” Use specified parts number.

“UN” Use as many as needed.

“AP” Alternate Parts

“LM” Locally Made (Parts need to be ordered locally)

“F#” Frame No. (Applicable machine No.)

“O/S” Over Size

## 3. The number of components for assembly

- Parts, which are to be supplied in an assembly, are listed with a dot (.) in front of the part name as shown below.
- The numeral appearing to the right of each component part indicates the quantity of parts for each assembly unit.

PART NO.	DESCRIPTION	Q'TY	REMARKS
2F5-83310-60	FRONT FLASHER LIGHT ASSY	2	
115-83311-60	.BULB (6V-18W)	1	

## 4. Applicable colours of graphics are represented in the “REMARKS” as shown below.

PART NO.	DESCRIPTION	Q'TY	REMARKS
2N4-24110-00-X5	FUEL TANK COMP.		M <del>X</del> R
3J1-24240-10	.GRAPHIC, FUEL TANK		F <del>O</del> R MXR

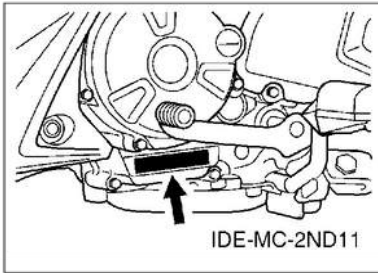
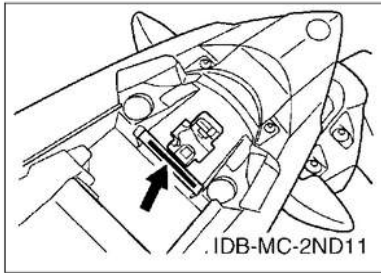
5. Note that the illustrations for reference in finding parts numbers are not to be used for assembling. When assembling, please use the applicable service manual.

# FOREWORD

## 7. Applicable Serial No.

Frame Serial No.

Engine Serial No.



## 8. Applicable Colour Code (The (\*) mark shows Model colour.)

Abbreviation	Colour Name	Colour Code
BNC2(*)	BLUISH GRAY COCKTAIL 2	1862
BNM3(*)	BLUISH GRAY METALLIC 3	0867
DGBMJ(*)	DEEP GREENISH BLUE METALLIC J	1474
MBL2	MAT BLACK 2	0582
MNYM3	MAT GRAYISH YELLOW METALLIC 3	1831
PBMJ(*)	PALE BLUE METALLIC J	1221
SMX	BLACK METALLIC X	0903
VDOM1	VERY DARK ORANGE METALLIC 1	0858
VYRS6	VIVID YELLOWISH RED SOLID 6	1699
YB	YAMAHA BLACK	0033

## 9. Applicable Starting Serial No.

Frame Serial No.

Serial No.	Name Of Q'ty Column	Model Code

Engine Serial No.

Serial No.	Name Of Q'ty Column	Model Code

# CONTENTS

## ENGINE

CYLINDER HEAD.....	1
CRANKSHAFT & PISTON.....	2
VALVE.....	4
CAMSHAFT & CHAIN.....	5
WATER PUMP.....	6
RADIATOR & HOSE.....	7
OIL PUMP.....	8
INTAKE.....	9
EXHAUST.....	11
CRANKCASE.....	12
CRANKCASE COVER 1.....	13
STARTER CLUTCH.....	14
CLUTCH.....	15
TRANSMISSION.....	16
SHIFT CAM & FORK.....	18
SHIFT SHAFT.....	19

## CHASSIS

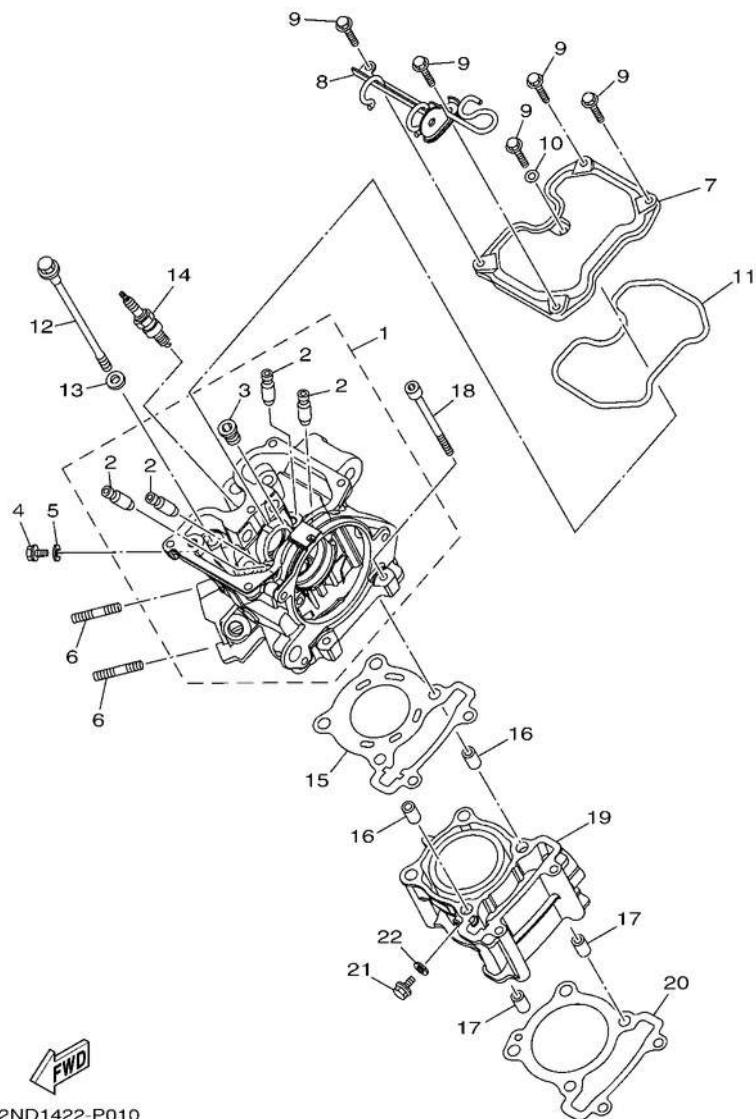
FRAME.....	20
FENDER.....	21
SIDE COVER.....	22
SIDE COVER 2.....	24
REAR ARM & SUSPENSION.....	26
STEERING.....	27
FRONT FORK.....	28
FUEL TANK.....	30
SEAT.....	31
FRONT WHEEL.....	32
FRONT BRAKE CALIPER.....	33
REAR WHEEL.....	34
REAR BRAKE CALIPER.....	36
STEERING HANDLE & CABLE.....	37
FRONT MASTER CYLINDER.....	39
STAND & FOOTREST.....	40
REAR MASTER CYLINDER.....	42
LEG SHIELD.....	44
LEG SHIELD 2.....	47
GENERATOR.....	49
STARTING MOTOR.....	50

FLASHER LIGHT.....	51
METER.....	52
HEADLIGHT.....	53
TAILLIGHT.....	54
HANDLE SWITCH & LEVER.....	55
ELECTRICAL 1.....	56
ELECTRICAL 2.....	57

## INDEX

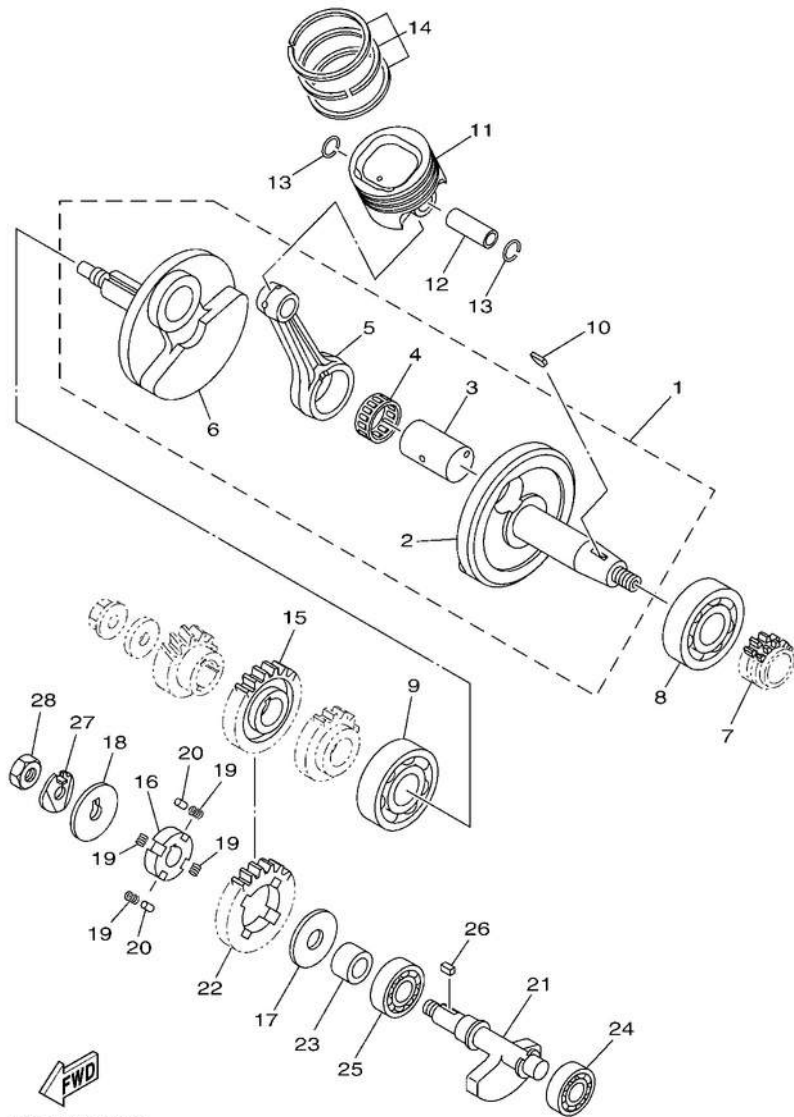
NUMERICAL INDEX.....	58
----------------------	----

**FIG. 1 CYLINDER HEAD**



2ND1422-P010

REF. NO.	PART NO.	DESCRIPTION	B17G	B17H	REMARKS
1	B17-E1102-01	CYLINDER HEAD ASSY	1	1	
2	1S7-E1133-10	.GUIDE, VALVE 1	4	4	
3	90340-12813	.PLUG, STRAIGHT SCREW	1	1	
4	95E32-06010	BOLT, FLANGE DEEP RECESS	1	1	
5	90430-06803	GASKET	1	1	
6	95612-08630	BOLT, STUD	2	2	
7	B17-E1191-00	COVER, CYLINDER HEAD 1	1	1	
8	2PV-E2443-00	STAY	1	1	
9	95E32-06020	BOLT, FLANGE DEEP RECESS	5	5	
10	90430-06803	GASKET	1	1	
11	2PV-E1193-00	GASKET, HEAD COVER 1	1	1	
12	2PV-E1361-00	BOLT, CYLINDER HOLDING 1	4	4	
13	90201-08859	WASHER, PLATE	4	4	
14	94700-00330	PLUG, SPARK (NGK R CR8E)	1	1	
15	2PV-E1181-00	GASKET, CYLINDER HEAD 1	1	1	
16	91810-14809	PIN, DOWEL PIN, DOWEL BOLT,	2	2	
17	91810-14809	HEXAGON SOCKET HEAD	2	2	
18	91312-06100	CYLINDER 1 GASKET, CYLINDER	2	2	
19	2PV-E1311-10		1	1	
20	1S8-E1351-00		1	1	
21	95E32-06010	BOLT, FLANGE DEEP RECESS	1	1	
22	90430-06803	GASKET	1	1	

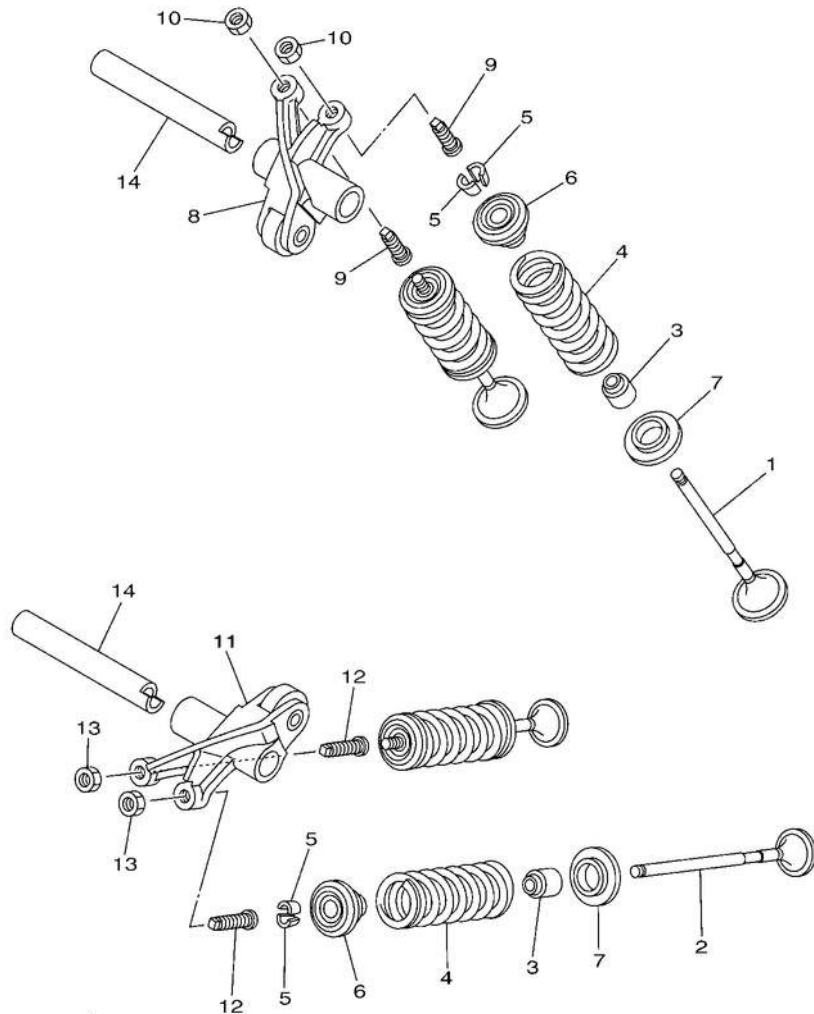


1PA1460-M021

FIG. 2 CRANKSHAFT & PISTON

REF. NO.	PART NO.	DESCRIPTION	B17G	B17H	REMARKS
1	B17-E1400-00	CRANKSHAFT ASSY	1	1	
2	B17-E1412-00	.CRANK 1 .CRANK 1	1	1	UR
	2ND-E1412-00	.PIN, CRANK 1	1	1	UR
3	3C1-E1681-10	.BEARING	1	1	
4	93310-528YK		1	1	
5	3C1-E1651-11	.ROD, CONNECTING	1	1	
6	B17-E1422-00	.CRANK 2 .CRANK 2	1	1	UR
	2ND-E1422-00	SPROCKET, CAM CHAIN	1	1	UR
7	3C1-E1549-10	BEARING	1	1	
8	93306-305XP		1	1	UR
	93306-305YF	BEARING	1	1	UR
9	93306-305XR	BEARING	1	1	UR
	93306-305X7	BEARING KEY,	1	1	UR
10	90280-03017	WOODRUFF	1	1	
11	2ND-E1631-00	PISTON (STD)	1	1	
12	2ND-E1633-00	PIN, PISTON	1	1	
13	93450-16115	CIRCLIP	2	2	
14	2PV-E1603-00	PISTON RING SET (STD)	1	1	
15	BK6-E1536-00	GEAR, DRIVE	1	1	
16	21C-E1496-20	BOSS, BUFFER	1	1	
17	90201-15821	WASHER, PLATE	1	1	
18	90214-10800	WASHER, CLAW	1	1	
19	90501-16800	SPRING, COMPRESSION	4	4	
20	93604-08071	PIN, DOWEL	2	2	
21	2FB-E1454-00	WEIGHT 1	1	1	
22	BK6-E1531-10	GEAR, BALANCE WEIGHT	1	1	
23	90387-15810	COLLAR	1	1	



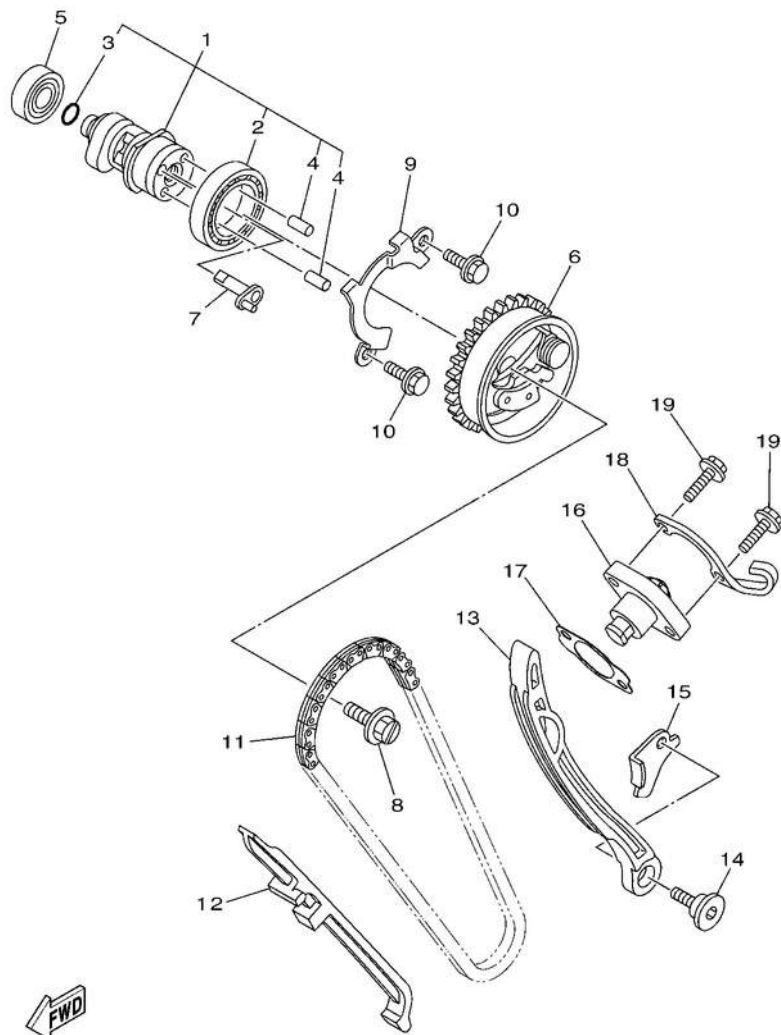


**FWD**  
1PA1460-M030

**FIG. 3 VALVE**

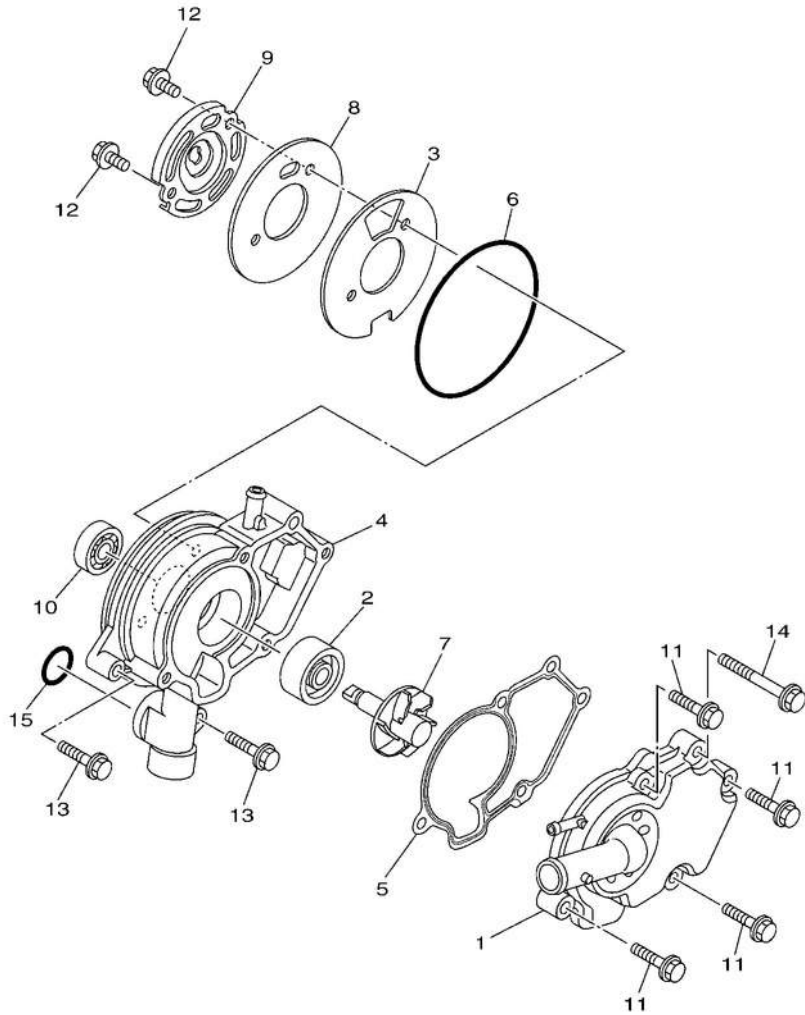
REF. NO.	PART NO.	DESCRIPTION	B17G	B17H	REMARKS
1	2PV-E2111-00	VALVE, INTAKE	2	2	
2	2PV-E2121-00	VALVE, EXHAUST	2	2	
3	1PA-E2119-00	SEAL, VALVE STEM	4	4	
4	B48-E2113-00	SPRING, VALVE INNER	4	4	
5	3S0-E2118-00	LOCK, VALVE SPRING RETAINER	8	8	
6	1PA-E2117-00	RETAINER, VALVE SPRING	4	4	
7	55P-E2126-00	SEAT, VALVE SPRING 2	4	4	
8	2ND-E2151-01	ARM, VALVE ROCKER	1	1	
9	2ND-E2159-00	SCREW, VALVE ADJUSTING	2	2	
10	90170-05803	NUT	2	2	
11	2ND-E2161-01	ARM, VALVE ROCKER 2	1	1	
12	2ND-E2159-00	SCREW, VALVE ADJUSTING	2	2	
13	90170-05803	NUT	2	2	
14	1CK-E2156-00	SHAFT, ROCKER 2	2	2	

**FIG. 4 CAMSHAFT & CHAIN**



**FWD**  
2ND1422-P040

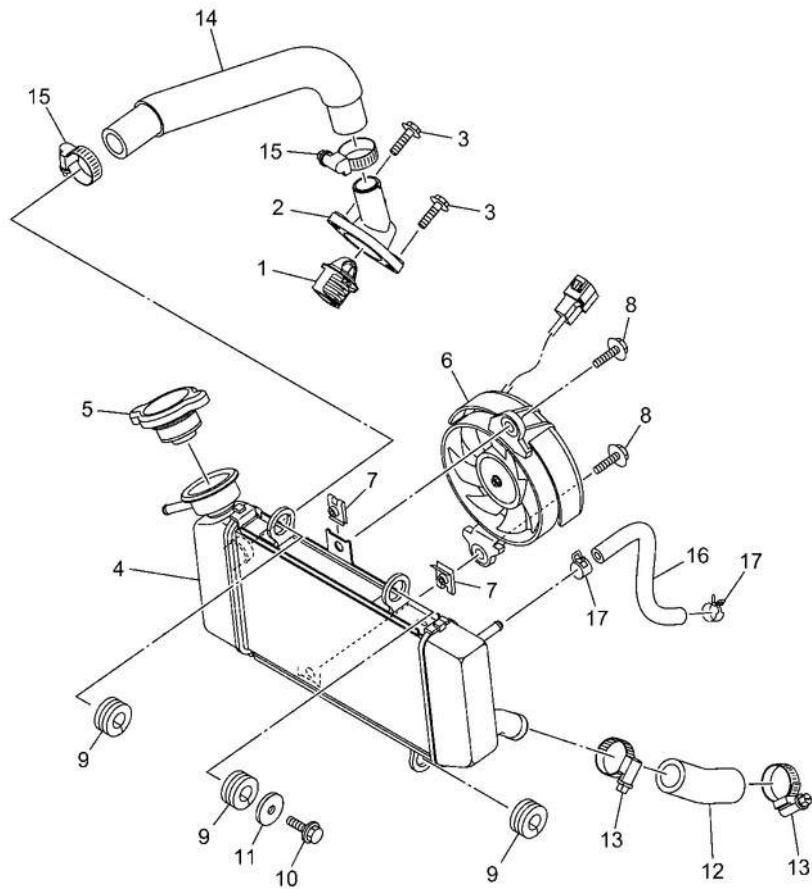
REF. NO.	PART NO.	DESCRIPTION	B17G	B17H	REMARKS
1	2PV-E2170-00	CAMSHAFT ASSY 1	1	1	
2	93306-906Y4	.BEARING	1	1	
3	93210-09806	.O-RING	1	1	
4	93605-06800	.PIN, DOWEL	2	2	
5	93306-001X2	BEARING	1	1	
6	2PV-E2280-00	DECOMPRESSION ASSY	1	1	
7	1S7-E2288-01	CAM, DECOMPRESSION	1	1	
8	5YP-E2157-01	BOLT	1	1	
9	1S8-E111F-00	PLATE	1	1	
10	95E32-06010	BOLT, FLANGE DEEP RECESS	2	2	
11	94568-H4096	CHAIN GUIDE,	1	1	
12	1PA-E2231-00	STOPPER 1 GUIDE,	1	1	
13	2PV-E2241-00	STOPPER 2 BOLT	1	1	
14	52B-E2228-00	COVER, CHAIN	1	1	
15	3C1-E2256-00		1	1	
16	2ND-E2210-20	TENSIONER ASSY, CAM CHAIN	1	1	
17	2PV-E2213-00	GASKET, TENSIONER CASE	1	1	
18	2PV-E5441-00	HOLDER, CLUTCH CABLE	1	1	
19	95E32-06025	BOLT, FLANGE DEEP RECESS	2	2	



  
2ND1422-P050

**FIG. 5 WATER PUMP**

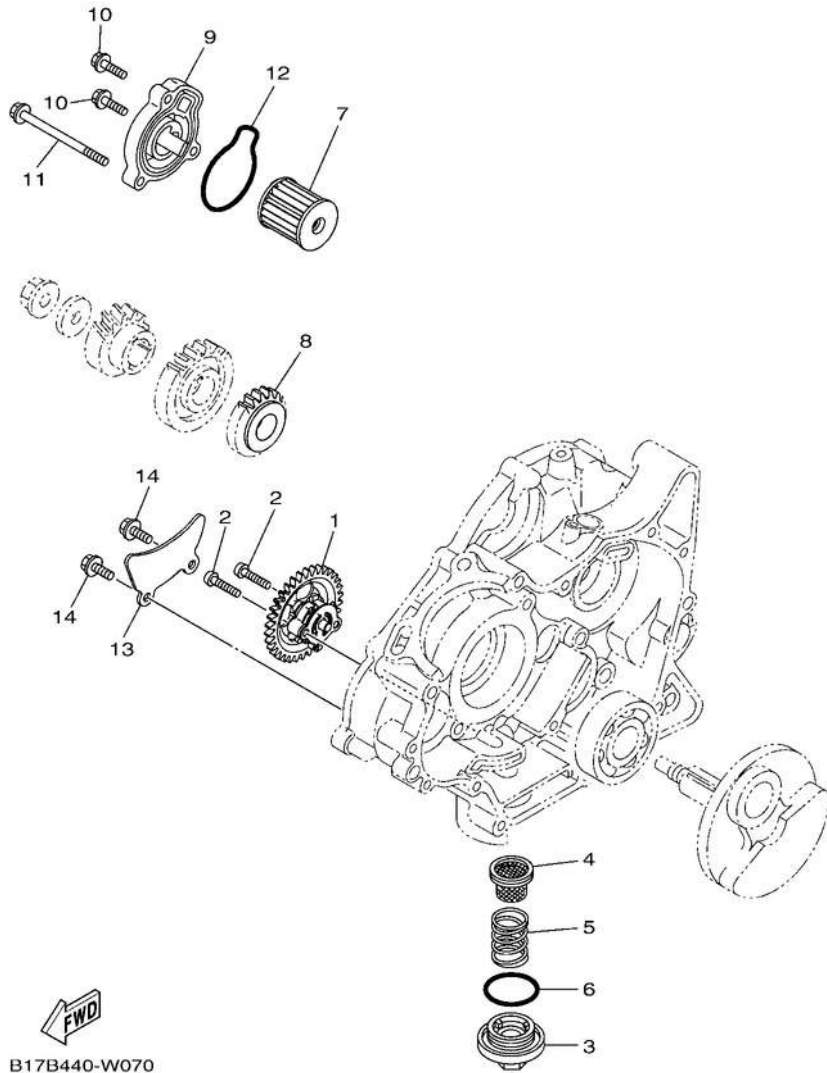
REF. NO.	PART NO.	DESCRIPTION	B17G	B17H	REMARKS
1	2PV-E2422-00	COVER, HOUSING	1	1	
2	B63-E2223-00	SEAL	1	1	
3	2PV-E2428-00	GASKET, HOUSING COVER 2	1	1	
4	2PV-E1185-00	COVER, CYLINDER HEAD SIDE 3	1	1	
5	2ND-E1196-00	GASKET, CYLINDER HEAD SIDE	1	1	
6	93210-84804	O-RING IMPELLER	1	1	
7	1S7-E2450-01	SHAFT ASSY PLATE	1	1	
8	1S7-E1951-00	PLATE BEARING	1	1	
9	1S7-E1952-02		1	1	
10	93306-000Y3		1	1	
11	95022-06025	BOLT, FLANGE BOLT, FLANGE	4	4	
12	95022-06012	BOLT, FLANGE DEEP RECESS	2	2	
13	95E32-06025	BOLT, FLANGE DEEP RECESS	2	2	
14	95E32-06050	O-RING	1	1	
15	93210-19809		1	1	



**FIG. 6 RADIATOR & HOSE**

REF. NO.	PART NO.	DESCRIPTION	B17G	B17H	REMARKS
1	5YP-12411-01	THERMOSTAT	1	1	
2	1S8-E2413-00	COVER, THERMOSTAT	1	1	
3	95E32-06020	BOLT, FLANGE DEEP RECESS	2	2	
4	2PV-E2461-00	RADIATOR COMP	1	1	
5	5P0-E2590-00	CONDUCTION ASSY	1	1	
6	2PV-E2405-00	BLOWER ASSY	1	1	
7	5YP-E2671-00	NUT 1	2	2	
8	5YP-E2675-00	BOLT, BLOWER HOLDING	2	2	
9	90480-15808	GROMMET	3	3	
10	95D32-06016	BOLT, FLANGE DEEP RECESS	1	1	
11	90201-06880	WASHER, PLATE	1	1	
12	B17-E2481-00	PIPE 1	1	1	
13	90450-27806	HOSE CLAMP ASSY	2	2	
14	B17-E2482-00	PIPE 2	1	1	
15	90450-27806	HOSE CLAMP ASSY	2	2	
16	2PV-E2576-00	HOSE 1	1	1	
17	90467-10805	CLIP	2	2	

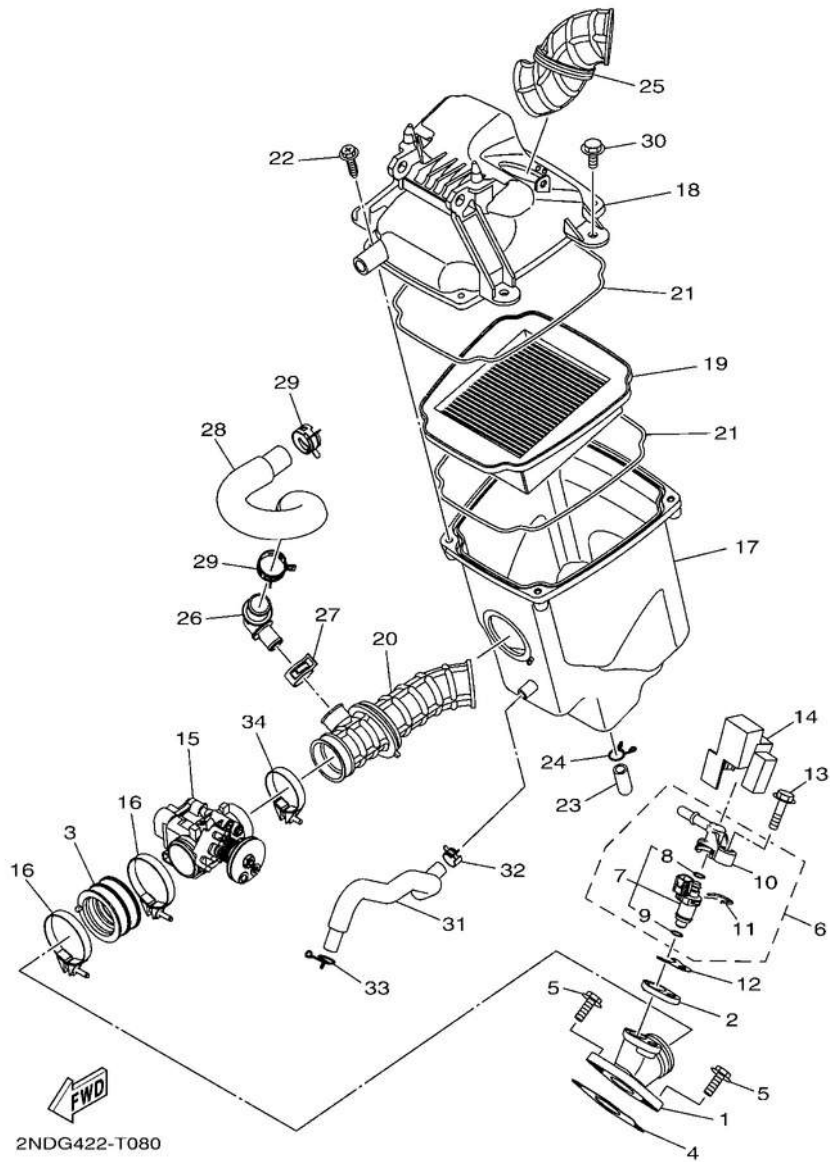
 B17G440-0060



**FIG. 7 OIL PUMP**

REF. NO.	PART NO.	DESCRIPTION	B17G	B17H	REMARKS
1	2PV-E3300-01	OIL PUMP ASSY	1	1	UR
	2ND-E3300-01	OIL PUMP ASSY	1	1	UR
2	98502-05025	SCREW, PAN HEAD	2	2	
3	1S8-E5351-00	PLUG, DRAIN 1	1	1	
4	38B-E3411-00	STRAINER, OIL	1	1	
5	90501-18576 6	SPRING, COMPRESSION	1	1	
	93210-34802 7	O-RING	1	1	
	38B-E3440-01 8	ELEMENT ASSY, OIL CLEANER	1	1	
	2PV-E3324-00 9	GEAR, PUMP DRIVE	1	1	
	55C-E3447-00	COVER, OIL ELEMENT	1	1	
10	95E32-06020	BOLT, FLANGE DEEP RECESS	2	2	
11	95E32-06080	BOLT, FLANGE DEEP RECESS	1	1	
12	93210-54805	O-RING COVER, PUMP GEAR	1	1	
13	B17-E3327-00	BOLT, FLANGE DEEP RECESS	1	1	
14	95E32-06012	BOLT, FLANGE DEEP RECESS	2	2	

**FIG. 8 INTAKE**

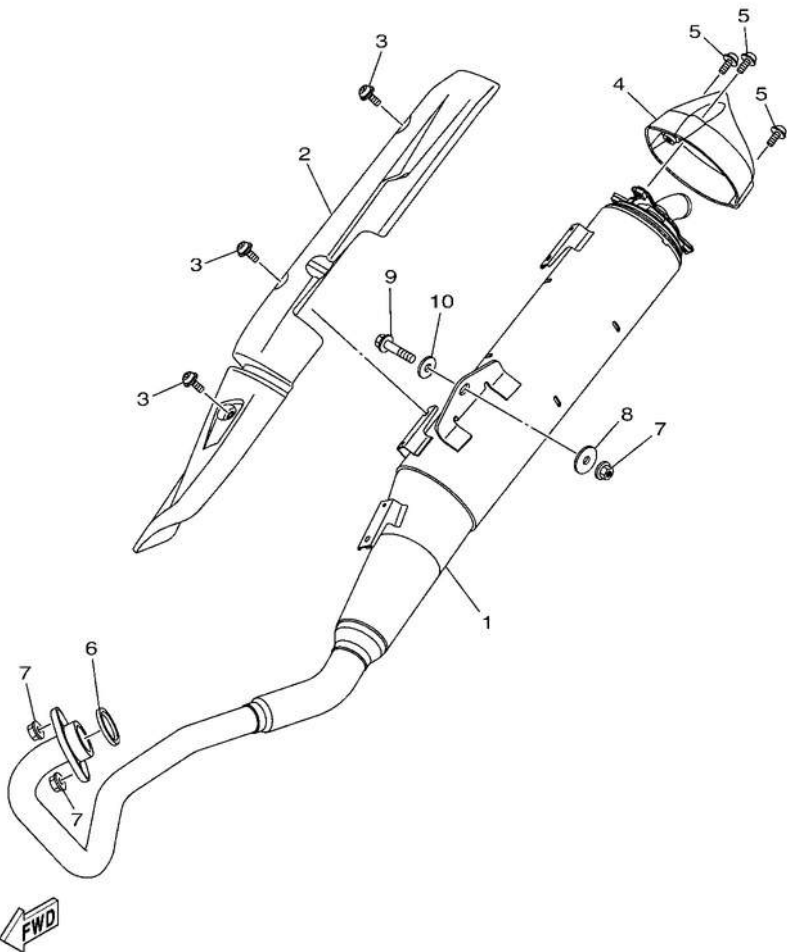


2NDG422-T080

REF. NO.	PART NO.	DESCRIPTION	B17G	B17H	REMARKS
1	2PV-E3585-00	MANIFOLD	1	1	
2	2FB-E3556-00	GASKET, MANIFOLD	1	1	
3	1PA-E3635-00	JOINT, INTAKE 1	1	1	
4	2PV-E4199-00	GASKET	1	1	
5	95E32-06020	BOLT, FLANGE DEEP RECESS	2	2	
6	BB8-E3770-10	INJECTOR ASSY	1	1	
7	BB8-E3761-10	.INJECTOR ..O-	1	1	
8	54P-E4147-00	RING ..O-RING	1	1	
9	5CA-E4147-00	.PIPE	1	1	
10	54P-E3938-00		1	1	
11	54P-E4137-00	.CLIP	1	1	
12	2PV-E3557-00	GASKET	1	1	
13	95812-06030	BOLT, FLANGE	1	1	
14	BK6-E3767-00	CAP, INJECTOR	1	1	
15	2PV-E3750-03	THROTTLE BODY ASSY	1	1	
16	90450-48803	HOSE CLAMP ASSY	2	2	
17	2PV-E4411-00	CASE, AIR CLEANER 1	1	1	
18	2PV-E4412-00	CAP, CLEANER CASE 1	1	1	
19	2PV-E4450-00	ELEMENT ASSY, AIR CLEANER	1	1	
20	2PV-E4453-00	JOINT, AIR CLEANER 1	1	1	
21	3C1-E4452-00	SEAL	2	2	
22	90163-05803	SCREW, TAPPING	4	4	
23	5TL-E443E-00	PIPE, DRAIN	1	1	
24	90467-12800	CLIP	1	1	
25	2PV-E4437-10	DUCT	1	1	
26	3C1-E4485-00	PIPE, JOINT	1	1	
27	90467-20804	CLIP	1	1	



**FIG. 9 EXHAUST**

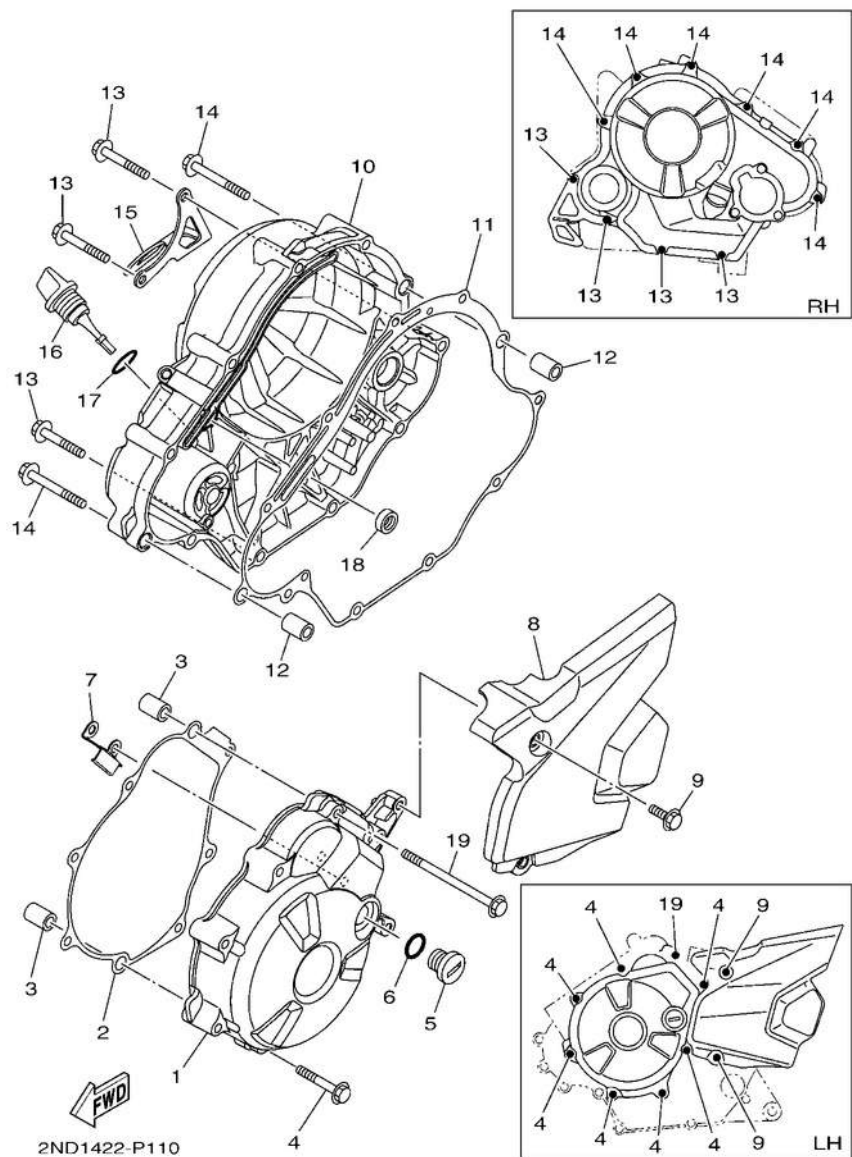


B17D440-Y090

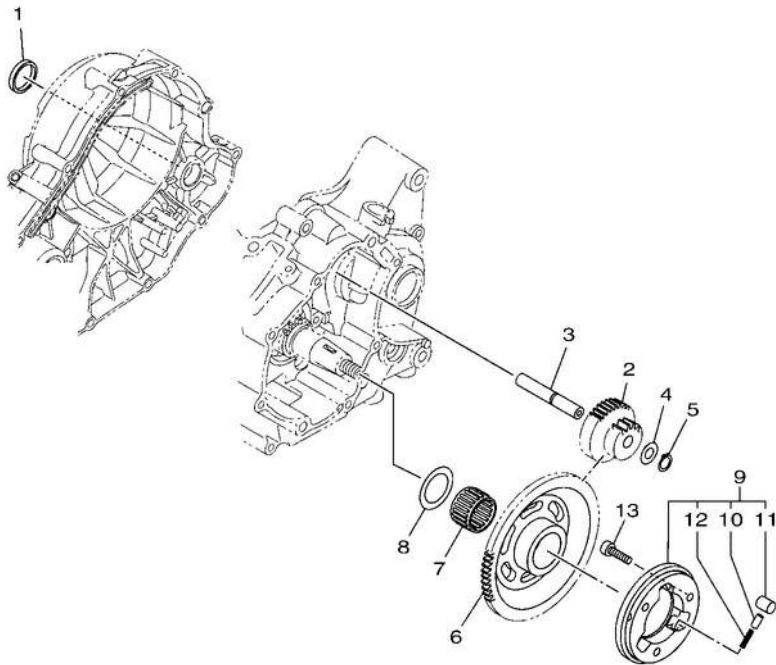
REF. NO.	PART NO.	DESCRIPTION	B17G	B17H	REMARKS
1	B17-E4703-10	MUFFLER COMP. 1	1	1	
2	B17-E4718-00	PROTECTOR, MUFFLER 1	1	1	
3	90111-06807	BOLT, HEXAGON SOCKET BUTTON	3	3	
	B17-E4799-00	CAP	1	1	
	90111-06807	BOLT, HEXAGON SOCKET BUTTON	3	3	
6	1S8-E4613-00	GASKET, EXHAUST PIPE	1	1	
7	95702-08500	NUT, FLANGE	3	3	
	90201-08612	WASHER, PLATE	1	1	
	95D32-08040	BOLT, FLANGE DEEP RECESS	1	1	
10	90201-08730	WASHER, PLATE	1	1	



**FIG. 11 CRANKCASE COVER 1**



REF. NO.	PART NO.	DESCRIPTION	B17G	B17H	REMARKS
1	B17-E5411-00	COVER, CRANKCASE 1	1	1	
2	2PV-E5451-00	GASKET, CRANKCASE COVER 1	1	1	
3	91810-14809	PIN, DOWEL	2	2	
4	95E32-06040	BOLT, FLANGE DEEP RECESS	7	7	
5	90340-14824	PLUG, STRAIGHT SCREW	1	1	
6	93210-148F8	O-RING	1	1	
7	2PV-E5113-00	PLATE	1	1	
8	B17-E5418-00	COVER, CHAIN CASE	1	1	
9	95E32-06016	BOLT, FLANGE DEEP RECESS	2	2	
10	B17-E5421-00	COVER, CRANKCASE 2	1	1	
11	2PV-E5461-00	GASKET, CRANKCASE COVER 2	1	1	
12	91810-14809	PIN, DOWEL BOLT, FLANGE	2	2	
13	95E32-06040	DEEP RECESS BOLT, FLANGE	4	4	
14	95E32-06050	DEEP RECESS GUIDE 1	6	6	
15	B17-E5142-00		1	1	
16	B17-E5362-00	PLUG, OIL LEVEL	1	1	
17	93210-19809	O-RING	1	1	
18	93101-10843	OIL SEAL	1	1	
19	95E32-06090	BOLT, FLANGE DEEP RECESS	1	1	

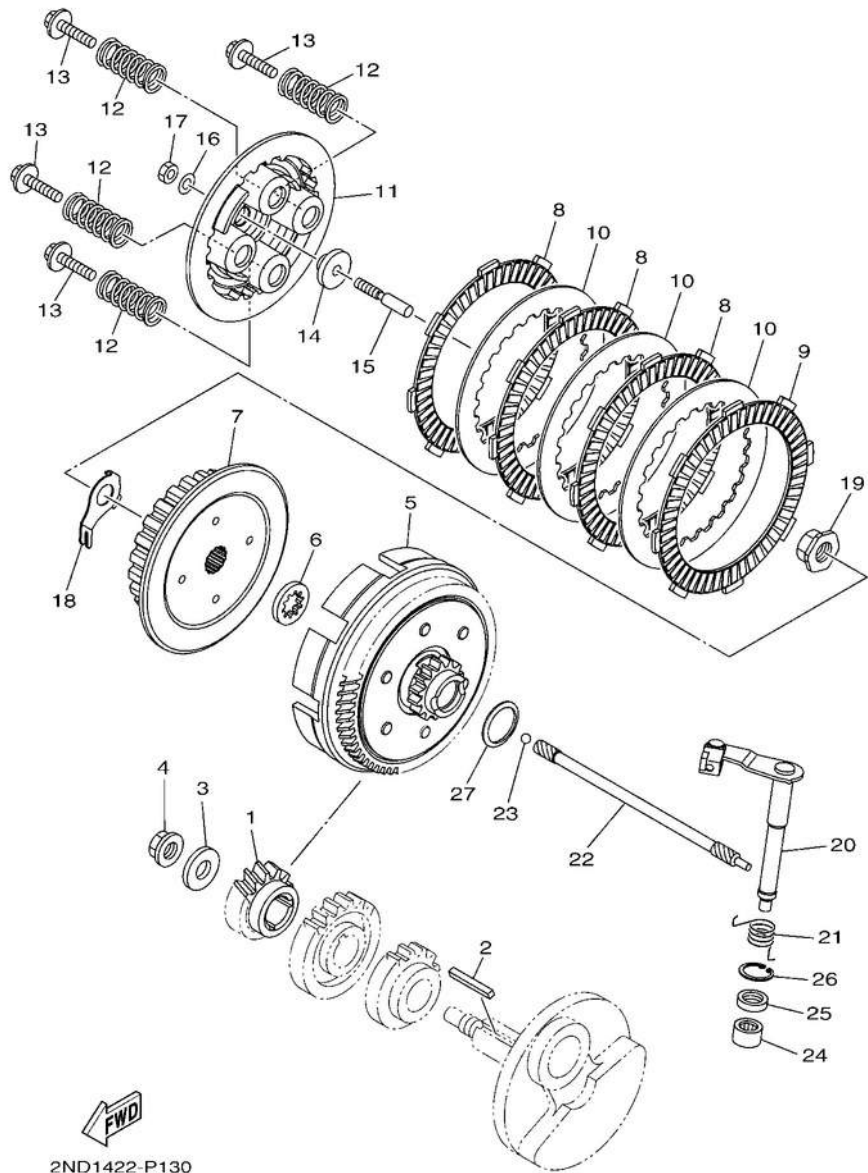


**FIG. 12 STARTER CLUTCH**

REF. NO.	PART NO.	DESCRIPTION	B17G	B17H	REMARKS
1	90338-30802	PLUG	1	1	
2	B17-E5514-00	GEAR 2	1	1	
3	38B-E5521-00	SHAFT 1	1	1	
4	90201-105E8	WASHER, PLATE	1	1	
5	99009-10400	CIRCLIP	1	1	
6	2PV-E5524-10	WHEEL, STARTER BEARING	1	1	
7	93310-325X1	WASHER, PLATE STARTER	1	1	
9	90201-25290	CLUTCH OUTER ASSY STARTER	1	1	
	2PV-E5580-00	CLUTCH OUTER ASSY	1	1	UR
	5YP-E5580-00		1	1	UR
10	2PH-E5583-10	.CAP, STARTER CLUTCH SPRING	3	3	UR
	5HV-E5583-00	.CAP, STARTER CLUTCH SPRING	3	3	UR
11	1ST-E5614-00	.PIN, DOWEL .PIN, DOWEL	3	3	UR
	5YP-E5614-00	.SPRING, RETURN	3	3	UR
12	2PV-E5572-00		3	3	UR
	90501-030A0	.SPRING, COMPRESSION	3	3	UR
13	90110-06873	BOLT, HEXAGON SOCKET HEAD	3	3	

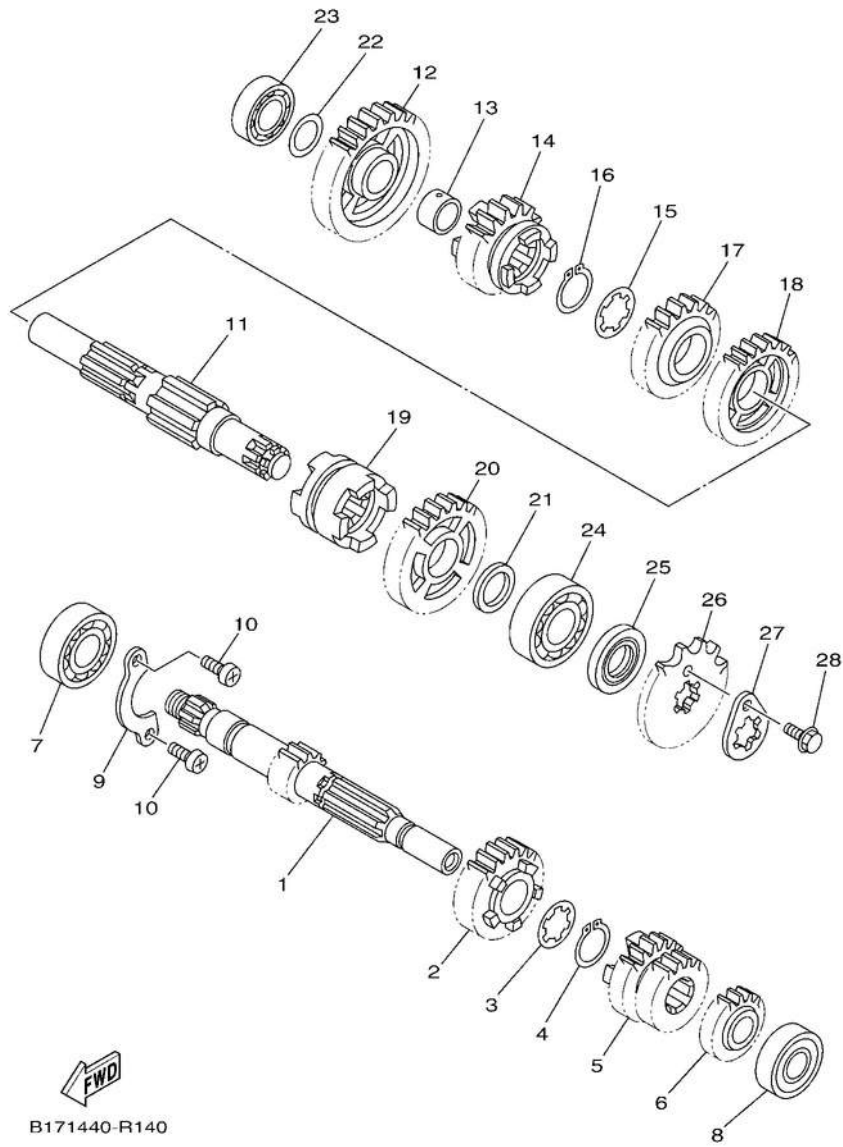


B17A440-V120



**FIG. 13 CLUTCH**

REF. NO.	PART NO.	DESCRIPTION	B17G	B17H	REMARKS
1	3C1-E6111-00	GEAR, PRIMARY DRIVE	1	1	
2	38B-E6193-00	KEY, FEATHER	1	1	
3	90201-12019 4	WASHER, PLATE	1	1	
5	90179-12808	NUT	1	1	
	2PV-E6150-00	PRIMARY DRIVEN GEAR COMP.	1	1	
6	2ND-E6154-00	PLATE, THRUST 1	1	1	
7	45P-E6371-00	BOSS, CLUTCH	1	1	
8	2PV-E6321-00	PLATE, FRICTION	3	3	
9	2UP-E6321-00	PLATE, FRICTION	1	1	
10	2PV-E6324-00	PLATE, CLUTCH 1	3	3	
11	45P-E6351-00	PLATE, PRESSURE 1	1	1	
12	2ND-E6333-00	SPRING, CLUTCH 1	4	4	
13	45P-E6337-00	SCREW, SPRING	4	4	
14	2ND-E6358-00	PLATE, PUSH	1	1	
15	45P-E6356-00	ROD, PUSH 1	1	1	
16	3C1-E6144-00	WASHER	1	1	
17	3C1-E6344-00	NUT, ADJUSTING	1	1	
18	45P-E6135-00	WASHER, LOCK	1	1	
19	90179-14001	NUT	1	1	
20	2ND-E6380-00	PUSH LEVER ASSY	1	1	
21	2PV-E6345-00	SPRING, RETURN	1	1	
22	1PA-E6357-00	ROD, PUSH 2	1	1	
23	93505-16844	BALL BEARING	1	1	
24	93315-112Y9	OIL SEAL	1	1	
25	93102-12862		1	1	
26	99009-20500	CIRCLIP	1	1	
27	90208-20003	WASHER, CONICAL SPRING	1	1	



B171440-R140

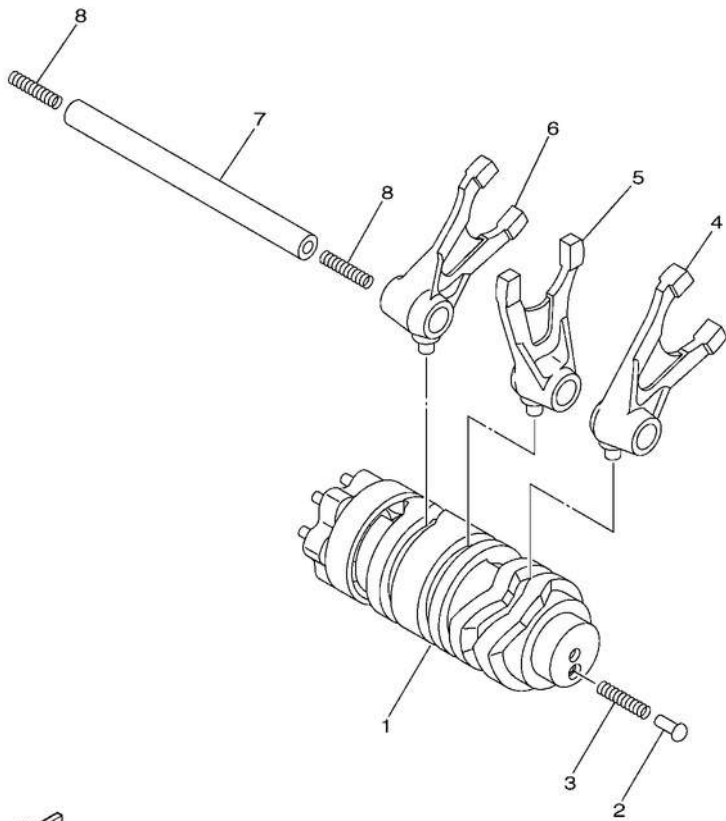
**FIG. 14 TRANSMISSION**

REF. NO.	PART NO.	DESCRIPTION	B17G	B17H	REMARKS
1	2ND-E7411-00	AXLE, MAIN (12T)	1	1	
2	2ND-E7151-00	GEAR, 5TH PINION (23T)	1	1	
3	90209-17285	4 WASHER	1	1	
4	93410-20809	5 CIRCLIP	1	1	
5	2ND-E7131-00	GEAR, 3RD PINION (21T/21T)	1	1	
6	55P-E7121-00	GEAR, 2ND PINION (16T)	1	1	
7	93306-054XB	BEARING BEARING	1	1	
8	933A6-202X0	PLATE, COVER SCREW,	1	1	
9	3C1-E7471-00	PAN HEAD	1	1	
10	98512-06012		2	2	
11	2ND-E7402-20	DRIVE AXLE ASSY	1	1	
12	3C1-E7211-00	GEAR, 1ST WHEEL (34T)	1	1	
13	90387-17804	COLLAR	1	1	
14	2PV-E7251-00	GEAR, 5TH WHEEL (22T)	1	1	
15	90209-18208	WASHER	1	1	
16	93410-22039	CIRCLIP	1	1	
17	BK6-E7241-00	GEAR, 4TH WHEEL (24T)	1	1	
18	BK6-E7231-00	GEAR, 3RD WHEEL (30T)	1	1	
19	3C1-E7285-00	CLUTCH, DOG	1	1	
20	BK8-E7221-00	GEAR, 2ND WHEEL (30T)	1	1	
21	90201-20814	WASHER, PLATE	1	1	
22	90201-173F4	WASHER, PLATE	1	1	
23	93306-003YN	BEARING	1	1	
24	93306-204Y7	BEARING OIL	1	1	
25	93102-20892	SEAL	1	1	
26	93822-14800	SPROCKET, DRIVE (14T)	1	1	
27	1S8-E7456-00	HOLDER, SPROCKET	1	1	



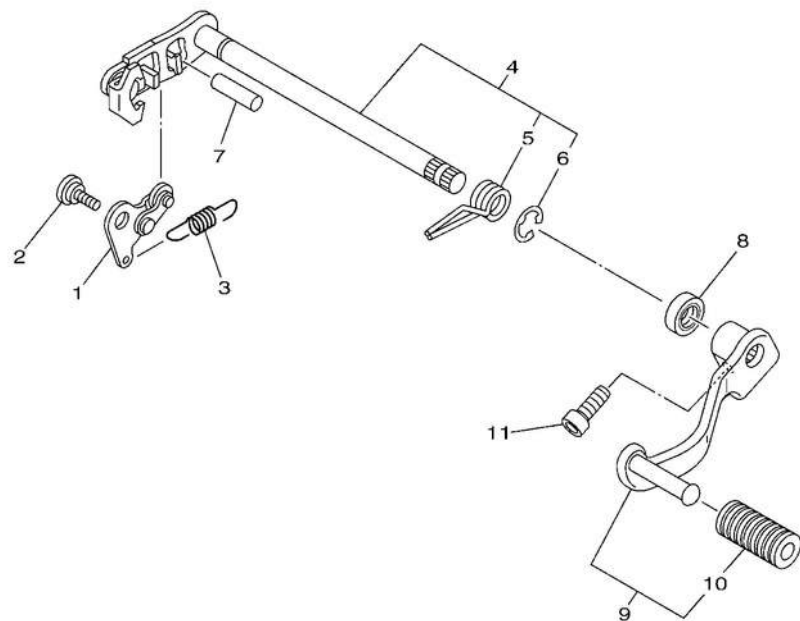
**FIG. 15 SHIFT CAM & FORK**

REF. NO.	PART NO.	DESCRIPTION	B17G	B17H	REMARKS
1	2PV-E8540-10	SHIFT CAM ASSY POINT,	1	1	
2	5TP-E8542-00	NEUTRAL SPRING,	1	1	
3	90501-06022	4 COMPRESSION FORK,	1	1	
2ND-E8511-00	5	SHIFT 1 FORK, SHIFT 2	1	1	
2ND-E8512-00			1	1	
6	2ND-E8513-00	FORK, SHIFT 3 BAR, SHIFT	1	1	
7	1PA-E8531-00	FORK GUIDE 1 BAR, SHIFT	1	1	UR
38B-E8531-00		FORK GUIDE 1 SPRING,	1	1	UR
8	90501-06800	COMPRESSION	2	2	



  
50C1460-K170

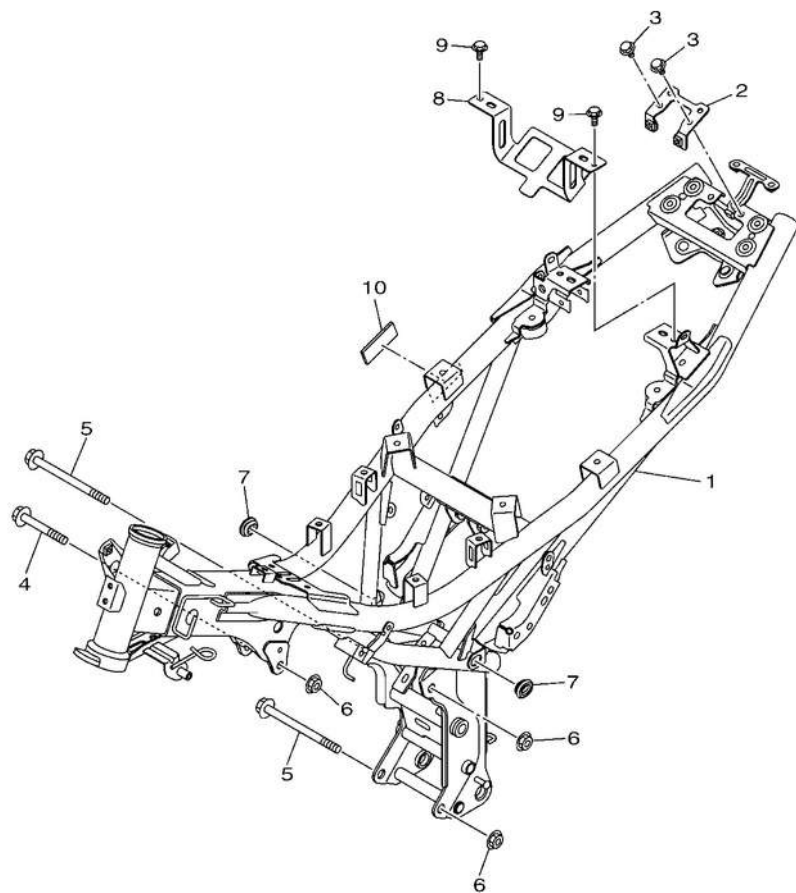
**FIG. 16 SHIFT SHAFT**



REF. NO.	PART NO.	DESCRIPTION	B17G	B17H	REMARKS
	1 21C-E8140-00	STOPPER LEVER ASSY	1	1	
	2 90109-06279	BOLT	1	1	
	3 3C1-E8337-00	SPRING	1	1	
	4 2ND-E8101-01	SHIFT SHAFT ASSY	1	1	
	5 90508-32837	.SPRING, TORSION	1	1	
	6 99002-10600	.CIRCLIP	1	1	
	93608-30839	8 PIN, DOWEL	1	1	
	93102-12891	9 OIL SEAL (SD 12-22-5 HS)	1	1	
	B17-E8110-10	10 SHIFT PEDAL ASSY	1	1	
	5H3-E8113-00	.COVER, SHIFT PEDAL	1	1	
	11 91312-08020	BOLT, HEXAGON SOCKET HEAD	1	1	

 2ND1422-P160

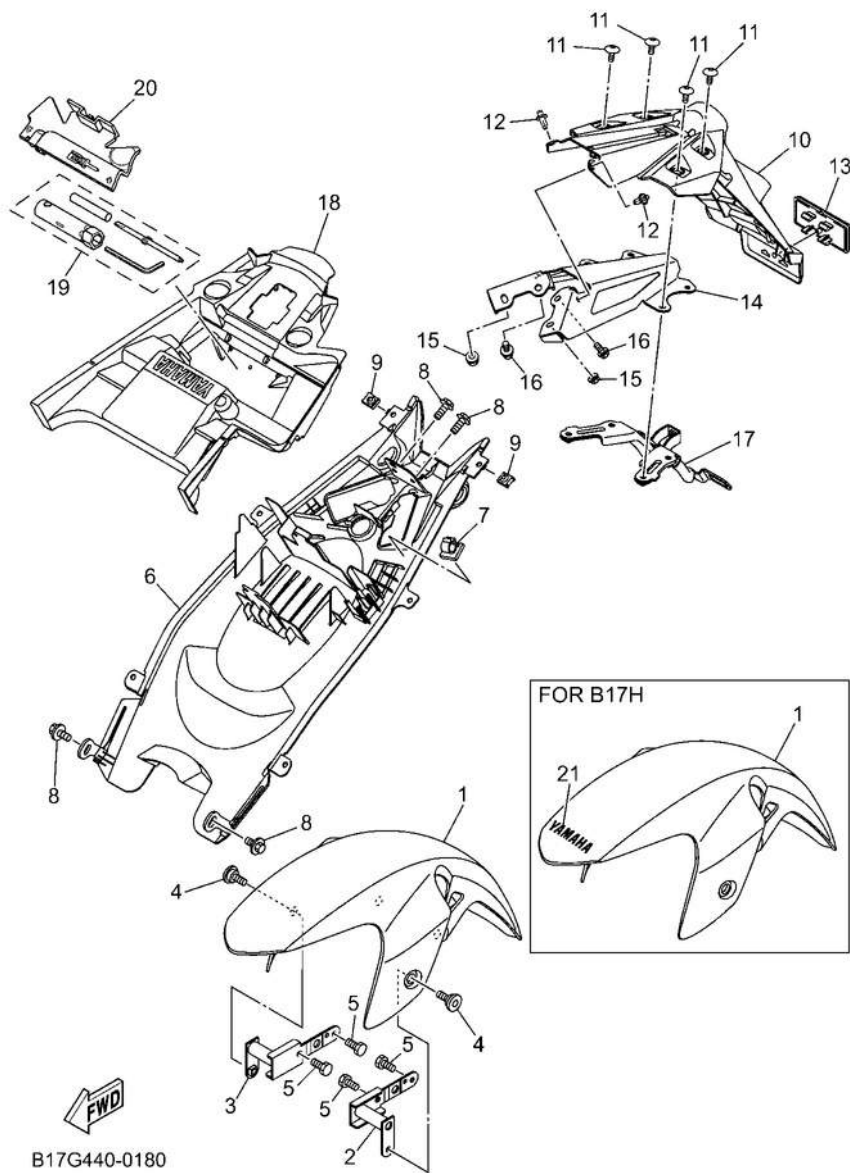
**FIG. 17 FRAME**



REF. NO.	PART NO.	DESCRIPTION	B17G	B17H	REMARKS
1	B17-F1110-10	FRAME COMP. BRACKET,	1	1	
2	B17-F478X-00	SEAT LOCK BOLT, FLANGE	1	1	
3	95D02-06012	DEEP RECESS BOLT, FLANGE	2	2	
4	90105-108B5	BOLT, FLANGE	1	1	
5	90105-108B4		2	2	
6	90179-10805 7	NUT	3	3	
	90480-01559 8	GROMMET	2	2	
	B17-F2535-00 9	STAY, BATTERY 1	1	1	
	95D02-06012	BOLT, FLANGE DEEP RECESS	2	2	
10	90520-02813	DAMPER, PLATE	1	1	

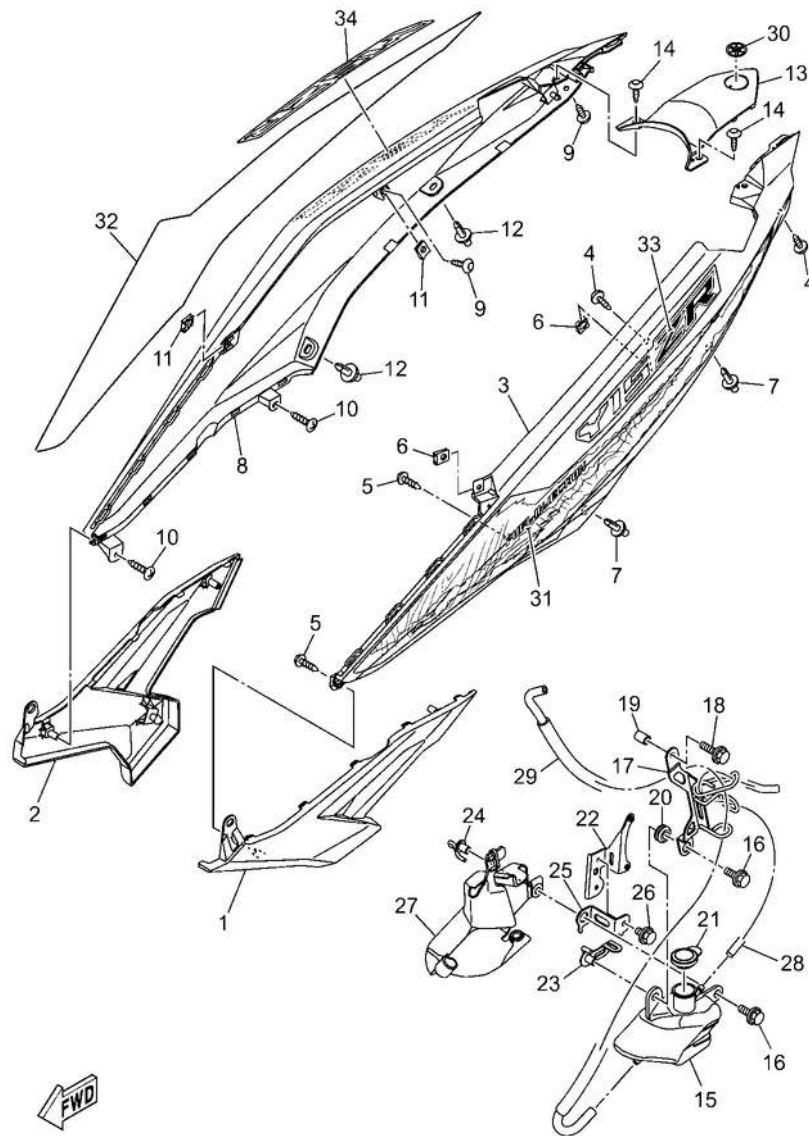


2ND1422-P170



**FIG. 18 FENDER**

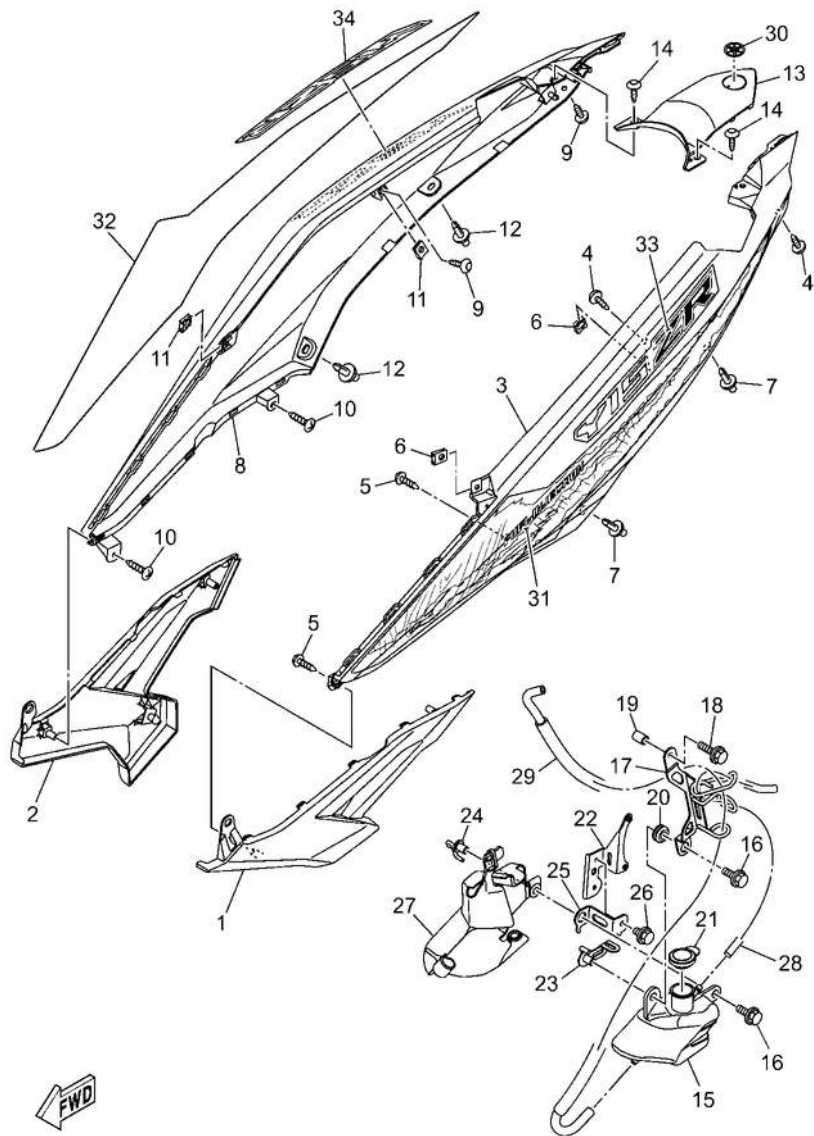
REF. NO.	PART NO.	DESCRIPTION	B17G	B17H	REMARKS
1	B17-F1511-10-P0	FENDER, FRONT	1		UR SMX FOR BNM3
	B17-F1511-10-PM	FENDER, FRONT	1		UR FOR PBMJ
	B17-F1511-10-PN	FENDER, FRONT	1		UR FOR DGBMJ
	B17-F1511-10-PP	FENDER, FRONT		1	FOR BNC2
2	B17-F1513-00	STAY, FENDER 1	1	1	
3	B17-F1514-00	STAY, FENDER 2	1	1	
4	90109-068A4	BOLT	2	2	
5	97022-06012	BOLT, HEXAGON	4	4	
6	B17-F1611-01	FENDER, REAR	1	1	
7	90464-54086	CLAMP	1	1	
8	90119-06044	BOLT, WITH WASHER NUT, SPRING	4	4	
9	90183-05807	GUARD, MUD BOLT, HEXAGON	2	2	
10	B17-F1629-02	SOCKET BUTTON RIVET	1	1	
11	90111-06848		4	4	
12	90269-06816		2	2	
13	55D-H5130-00	REAR REFLECTOR ASSY	1	1	
14	B17-F164F-00	STAY 1	1	1	
15	95607-06200	NUT, SELF U-FLANGE	2	2	
16	95D32-06016	BOLT, FLANGE DEEP RECESS	2	2	
17	B17-F164G-00	STAY 2	1	1	
18	B17-F160E-00	BOX	1	1	
19	B17-F8100-10	TOOL KIT	1	1	
20	B17-F8170-01	HOLDER, TOOL	1	1	
21	5LW-F153E-30	EMBLEM, YAMAHA		1	



B17F440-Z190

**FIG. 19 SIDE COVER**

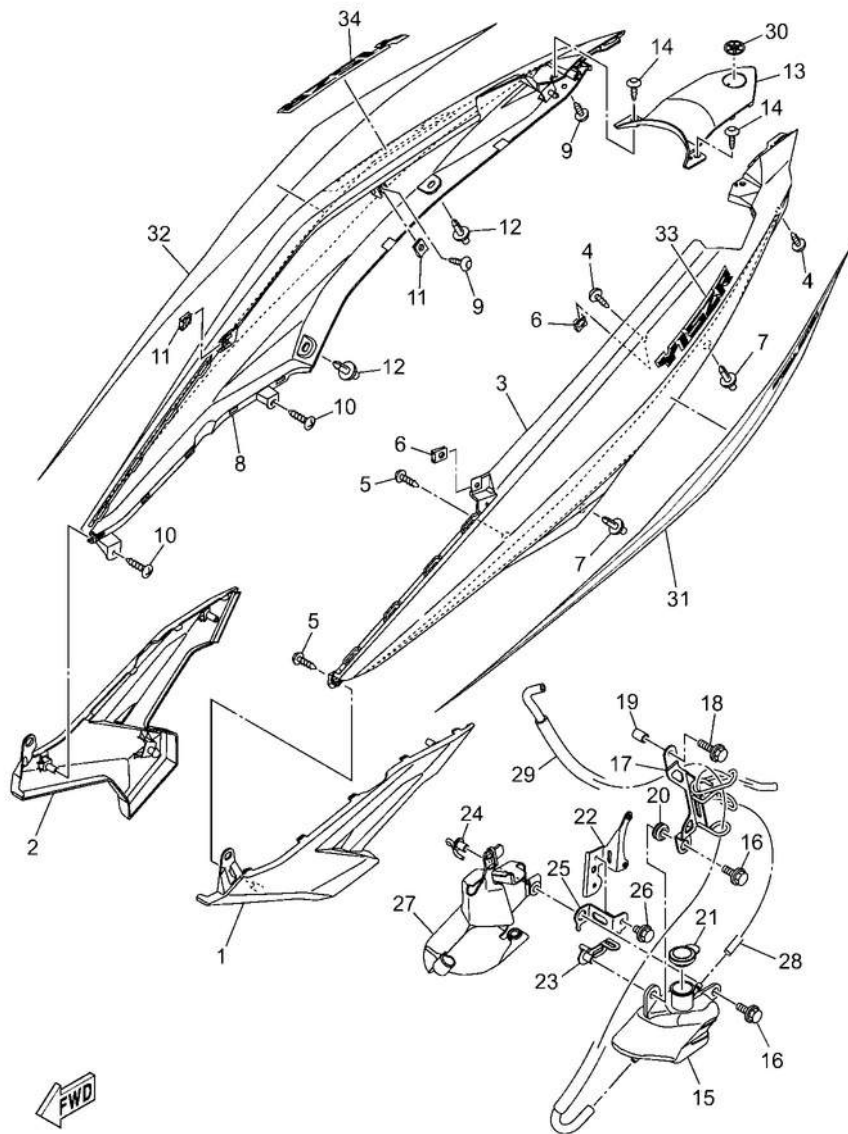
REF. NO.	PART NO.	DESCRIPTION	B17G	B17H	REMARKS
1	B17-F1711-10	COVER, SIDE 1	1		
	B17-F1721-10	COVER, SIDE 2	1		
	B17-F1731-00-P5	COVER, SIDE 3	1		UR SMX FOR BNM3
	B17-F1731-00-	COVER, SIDE 3	1		UR FOR PBMJ
	PD B17-F1731-	COVER, SIDE 3	1		UR FOR DGBMJ
4	00-P5-90160-05009	SCREW, ROUND TAPPING	2		
	97702-40014	SCREW, TAPPING	2		
	90183-05807	NUT, SPRING	2		
	90269-06816	8 B17-	2		
	F1741-00-P5	COVER, SIDE 4	1		UR SMX FOR BNM3
	B17-F1741-00-	COVER, SIDE 4 COVER,	1		UR FOR PBMJ
	PD B17-F1741-	SIDE 4 SCREW, ROUND	1		UR FOR DGBMJ
9	00-P5-90160-05009	TAPPING SCREW,	2		
10	97702-40014	TAPPING NUT, SPRING	2		
11	90183-05807		2		
12	90269-06816	RIVET	2		
13	B17-F171E-10	COVER, SIDE 5	1		
14	90160-05009	SCREW, ROUND TAPPING	2		
15	1S9-F1871-01	TANK, RECOVERY	1		
16	90119-06044	BOLT, WITH WASHER	2		
17	B17-F172K-00	BRACKET 1	1		
18	95D32-06025	BOLT, FLANGE DEEP RECESS	1		
19	90387-06144	COLLAR	1		
20	90480-13018	GROMMET	1		
21	5YP-F1875-01	CAP	1		
22	B17-F172L-00	BRACKET 2	1		
23	B17-F172M-10	BRACKET 3	1		



B17F440-Z190

**FIG. 19 SIDE COVER**

REF. NO.	PART NO.	DESCRIPTION	B17G	B17H	REMARKS
24	55P-F1173-00	BOSS, WIRE HOLDER	1		
25	B17-F172M-00	BRACKET 3	1		
26	95D32-06010	BOLT, FLANGE DEEP RECESS	1		
27	1S8-F172W-00	COVER	1		
28	90445-09823	HOSE	1		
29	55C-F1817-00	PIPE 2 TUNING	1		
30	B17-F836B-30	FORK MARK	1		
31	B17-F17F1-00	GRAPHIC, 1	1		UR FOR BNM3
	B17-F17F1-10	GRAPHIC, 1	1		UR FOR PBMJ
	B17-F17F1-20	GRAPHIC, 1	1		UR FOR DGBMJ
32	B17-F17F2-00	GRAPHIC, 2	1		UR UR FOR BNM3
	B17-F17F2-10	GRAPHIC, 2	1		UR FOR PBMJ
	B17-F17F2-20	GRAPHIC, 2	1		UR FOR DGBMJ
33	B17-F17F3-00	GRAPHIC, 3	1		UR FOR BNM3
	B17-F17F3-10	GRAPHIC, 3	1		UR FOR PBMJ
	B17-F17F3-20	GRAPHIC, 3	1		UR FOR DGBMJ
34	B17-F17F4-00	GRAPHIC, 4	1		UR FOR BNM3
	B17-F17F4-10	GRAPHIC, 4	1		UR FOR PBMJ
	B17-F17F4-20	GRAPHIC, 4	1		UR FOR DGBMJ

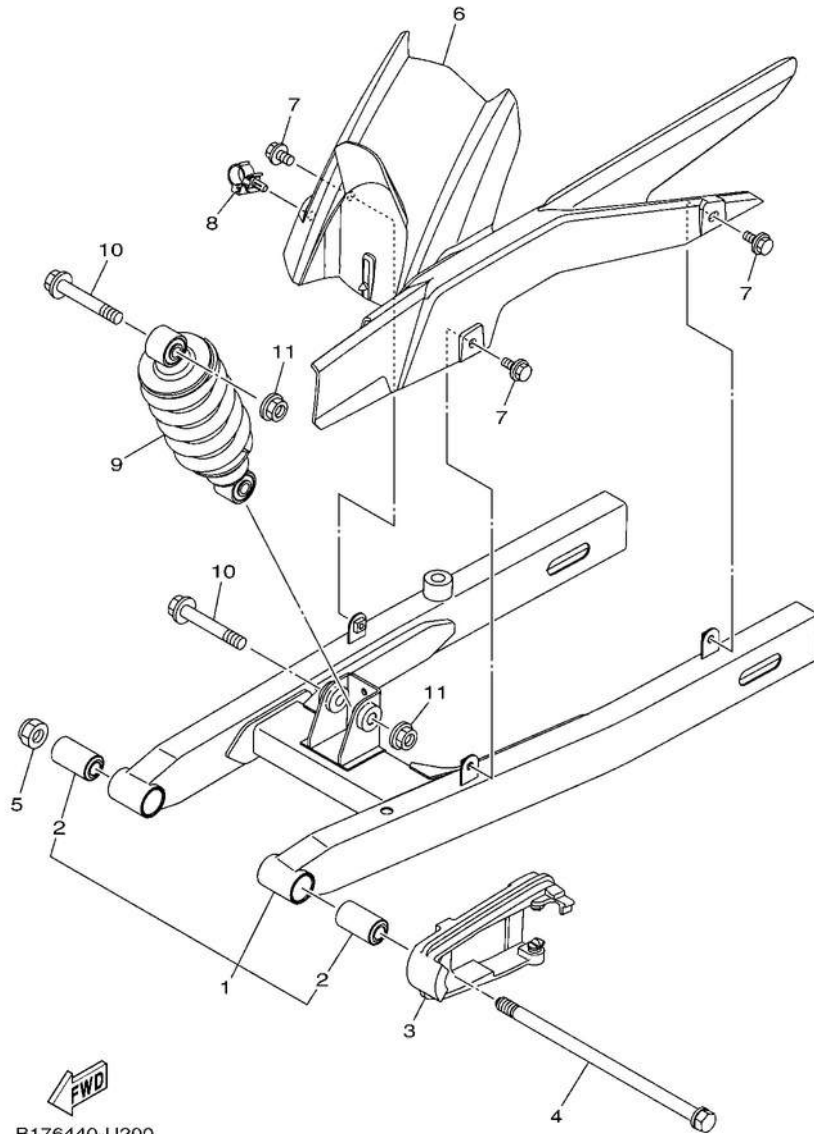


B17G440-0200

**FIG. 20 SIDE COVER 2**

REF. NO.	PART NO.	DESCRIPTION	B17G	B17H	REMARKS
1	B17-F1711-00-P9	COVER, SIDE 1 COVER,		1	VDOM1 FOR BNC2
2	B17-F1721-00-P9	SIDE 2 COVER, SIDE 3		1	VDOM1 FOR BNC2
3	B17-F1731-00-PF	SCREW, ROUND TAPPING		1	BNC2
4	90160-05009 5	SCREW, TAPPING		2	
	97702-40014			2	
6	90183-05807	NUT, SPRING		2	
7	90269-06816	RIVET		2	
8	B17-F1741-00-PF	COVER, SIDE 4		1	BNC2
9	90160-05009	SCREW, ROUND TAPPING		2	
10	97702-40014	SCREW, TAPPING		2	
11	90183-05807 12	NUT, SPRING		2	
	90269-06816 13 B17-	RIVET		2	
	F171E-00-PH 14	COVER, SIDE 5		1	BNC2
	90160-05009 15 1S9-	SCREW, ROUND TAPPING		2	
	F1871-01	TANK, RECOVERY		1	
16	90119-06044	BOLT, WITH WASHER		2	
17	B17-F172K-00	BRACKET 1		1	
18	95D32-06025	BOLT, FLANGE DEEP RECESS		1	
19	90387-06144	COLLAR		1	
20	90480-13018	GROMMET		1	
21	5YP-F1875-01	CAP BRACKET 2		1	
22	B17-F172L-00	BRACKET 3 BOSS,		1	
23	B17-F172M-10	WIRE HOLDER		1	
24	55P-F1173-00	BRACKET 3		1	
25	B17-F172M-00			1	
26	95D32-06010	BOLT, FLANGE DEEP RECESS		1	
27	1S8-F172W-00	COVER		1	

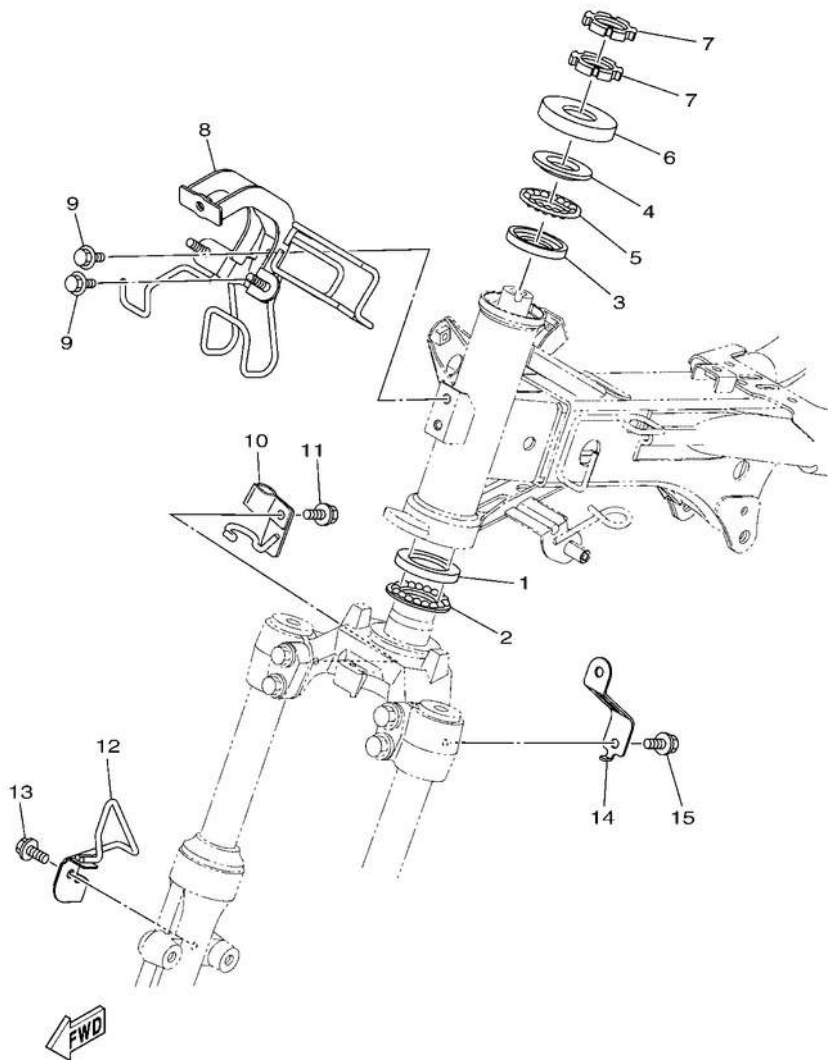




B176440-U200

FIG. 21 REAR ARM & SUSPENSION

REF. NO.	PART NO.	DESCRIPTION	B17G	B17H	REMARKS
1	BAX-F2100-00	REAR ARM ASSY	1	1	
2	5B9-F2123-00	.BUSH 1 SEAL,	2	2	
3	B17-F2151-10	GUARD AXLE,	1	1	
4	4NP-F5381-00	WHEEL NUT, U	1	1	
5	95614-12100		1	1	
6	B17-F1650-00	REAR FENDER COMP.	1	1	
7	90119-06155 8	BOLT, WITH WASHER	3	3	
9	90464-16012 9	CLAMP	1	1	
	B17-F2210-00	SHOCK ABSORBER ASSY, REAR	1	1	
10	90105-10855	BOLT, FLANGE	2	2	
11	95602-10200	NUT, SELF-LOCKING	2	2	

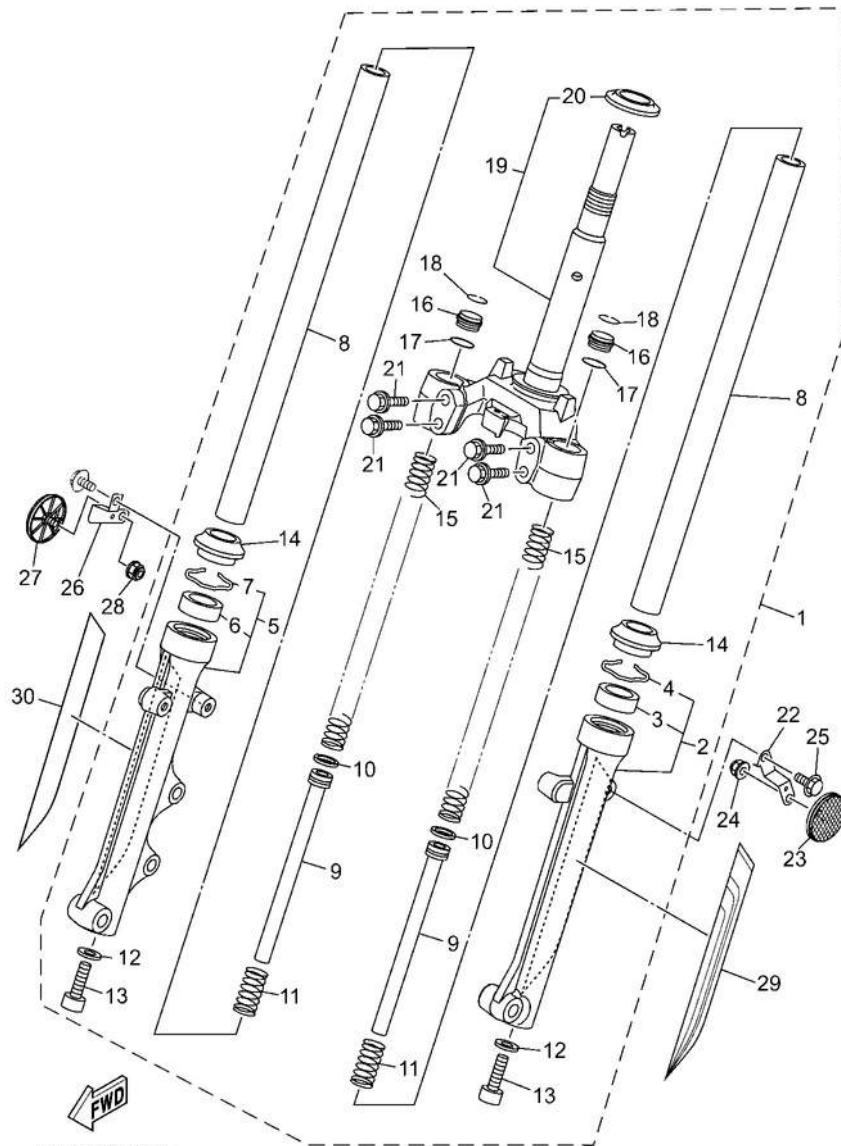


2NDC422-U220

**FIG. 22 STEERING**

REF. NO.	PART NO.	DESCRIPTION	B17G	B17H	REMARKS
1	1KL-F3412-10	RACE, BALL 2 RETAINER,	1	1	
2	5VL-F341E-10	BALL BEARING RACE,	1	1	
3	4RT-F3412-10	BALL 2 RACE, BALL 1	1	1	
4	4RT-F3411-10	RETAINER, BALL BEARING	1	1	
5	1P6-F341E-10		1	1	
6	5TL-F3416-01	COVER, BALL RACE 2	1	1	
7	90179-25002	NUT	2	2	
8	B17-F331A-10	STAY	1	1	
9	95D02-06012	BOLT, FLANGE DEEP RECESS	2	2	
10	2PV-F587A-00	HOLDER, BRAKE HOSE 4	1	1	
11	95D02-06012	BOLT, FLANGE DEEP RECESS	1	1	
12	B17-F5876-00	HOLDER, BRAKE HOSE 2	1	1	
13	95D02-06012	BOLT, FLANGE DEEP RECESS	1	1	
14	B17-F334G-00	BRACKET 1	1	1	
15	95D02-06012	BOLT, FLANGE DEEP RECESS	1	1	

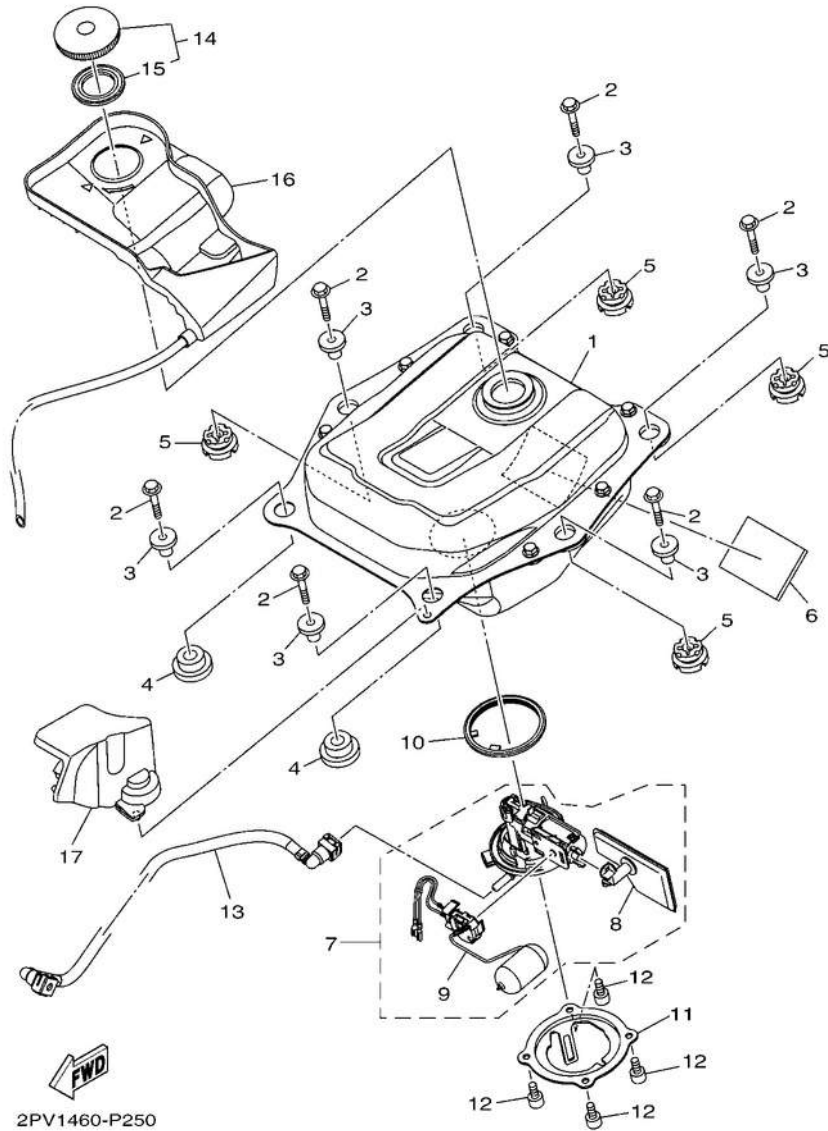
**FIG. 23 FRONT FORK**



B17G440-0230

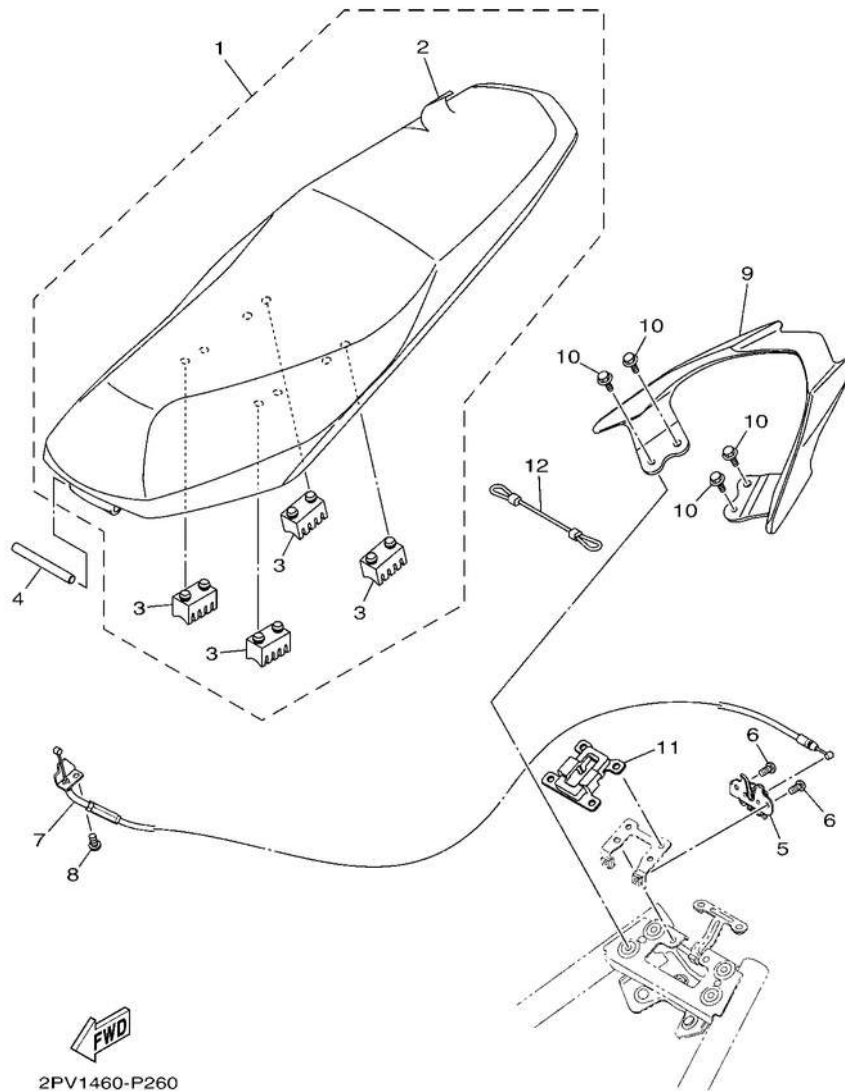
REF. NO.	PART NO.	DESCRIPTION	B17G	B17H	REMARKS
1	B17-F3100-10	FRONT FORK ASSY	1	1	
2	2ND-F3126-00	.TUBE, OUTER (L.H)	1	1	
3	4UV-F3145-00	.OIL SEAL ..RING,	1	1	
4	5P0-F3156-00	SNAP .TUBE,	1	1	
5	B17-F3136-00	OUTER 2	1	1	
6	4UV-F3145-00	.OIL SEAL	1	1	
7	5P0-F3156-00	..RING, SNAP	1	1	
8	2PV-F3110-20	.INNER TUBE COMP.1	2	2	
9	2ND-F3170-10	.CYLINDER COMP., FRONT FORK	2	2	
10	2ND-F3157-00	.RING, PISTON	2	2	
11	5TF-F3152-00	.SPRING, SUB	2	2	
12	509-F3158-L0	.GASKET	2	2	
13	31D-F3181-50	.BOLT, HEXAGON SOCKET HEAD	2	2	
14	5LL-F3144-00	.SEAL, DUST	2	2	
15	2PV-F3141-20	.SPRING, FRONT FORK	2	2	
16	1FC-F3111-10	.BOLT, CAP	2	2	
17	2JG-F3147-00	.O-RING	2	2	
18	5P0-F3153-00	.RING, SNAP	2	2	
19	B17-F3340-00	.UNDER BRACKET COMP.	1	1	
20	4FP-F3411-10	..RACE, BALL 1	1	1	
21	31B-F3346-00	.BOLT 1	4	4	
22	B17-F113J-00	BRACKET, REFLECTOR 1	1	1	
23	BSM-H5111-00	REFLECTOR, 1	1	1	
24	90185-05803 25	NUT, SELF-LOCKING	1	1	
25	95D02-06012	BOLT, FLANGE DEEP RECESS	1	1	
26	B17-F113K-00	BRACKET, REFLECTOR 2	1	1	
27	BSM-H5111-00	REFLECTOR, 1	1	1	





**FIG. 24 FUEL TANK**

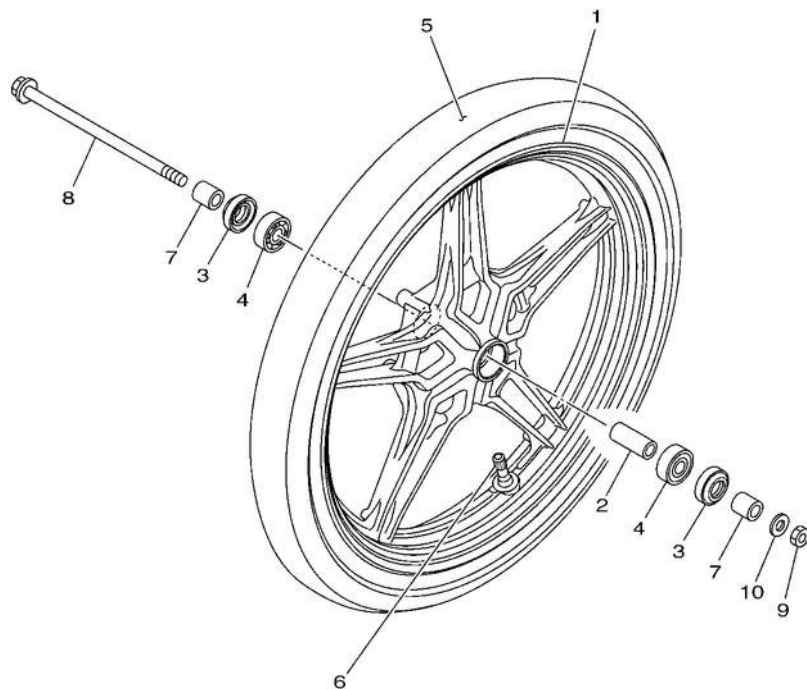
REF. NO.	PART NO.	DESCRIPTION	B17G	B17H	REMARKS
1	B17-F4100-01	FUEL TANK ASSY BOLT,	1	1	
2	95D02-06030	FLANGE DEEP RECESS	6	6	
3	90387-08835	COLLAR GROMMET	6	6	
4	90480-18810	GROMMET	2	2	
5	90480-18811	GROMMET	4	4	
6	1S8-F8372-00	DAMPER	1	1	
7	2ND-E3907-00	FUEL PUMP COMP.	1	1	
8	54P-E3915-00	.FILTER, FUEL SUCTION	1	1	
9	2ND-H5752-00	.SENDER	1	1	
10	1DB-F414G-01	SEAL	1	1	
11	BAX-F4491-00	BRACKET, FUEL PUMP	1	1	
12	91332-05010	BOLT	4	4	
13	2PV-E3971-01	PIPE, FUEL 1	1	1	
14	4YY-F4610-00	CAP ASSY	1	1	
15	4YY-F4612-00	.PACKING, CAP	1	1	
16	B17-F41B1-00	COVER, TANK	1	1	
17	B17-F4452-00	COVER	1	1	



**FIG. 25 SEAT**

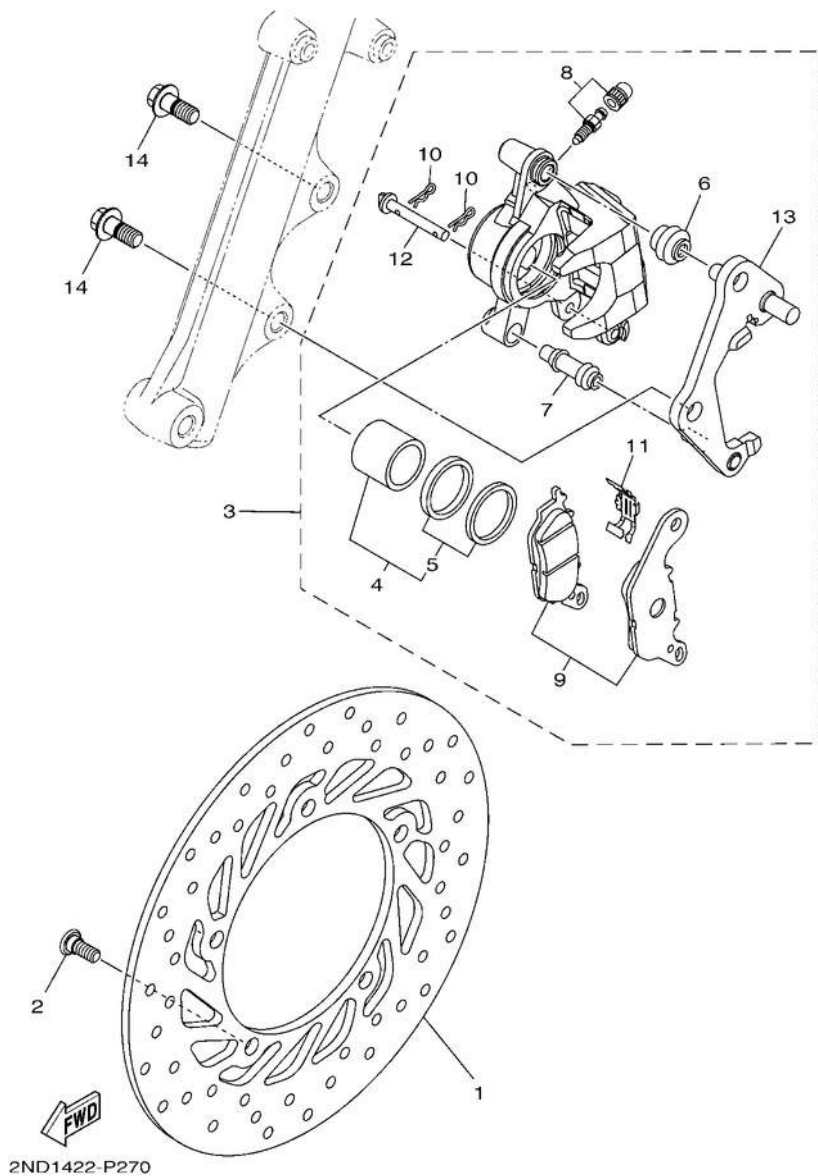
REF. NO.	PART NO.	DESCRIPTION	B17G	B17H	REMARKS
1	B17-F4730-40	DOUBLE SEAT ASSY	1		UR
	B17-F4730-01	DOUBLE SEAT ASSY	1		UR
	B17-F4730-80	DOUBLE SEAT ASSY		1	UR
	B17-F4730-90	DOUBLE SEAT ASSY		1	UR
2	B17-F470F-00	.SEAT COVER COMP.	1		
	B17-F470F-80	.SEAT COVER COMP.		1	
3	5VT-F4723-00	.DAMPER, SEAT	4		
	5VT-F4723-00	.DAMPER, SEAT PIN,		4	
4	2WB-F4727-00	SEAT FITTING SEAT	1		
5	1DY-F4780-00	LOCK ASSY	1	1	
6	98502-06012	SCREW, PAN HEAD	2	2	
7	B17-F478E-00	CABLE, SEAT LOCK	1	1	
8	98502-05010	SCREW, PAN HEAD	1	1	
9	B17-F4773-00-PE	HANDLE, SEAT	1		FOR BNM3
	B17-F4773-00-P5	HANDLE, SEAT	1	1	SMX FOR PBMJ,DGBMJ,BNC2
10	95D32-06020	BOLT, FLANGE DEEP RECESS	4	4	
11	B17-F1978-01	PROTECTOR, FRAME	1	1	UR
	B17-F1978-10	PROTECTOR, FRAME		1	UR
12	2PV-F1398-10	HANGER, HELMET	1	1	

**FIG. 26 FRONT WHEEL**



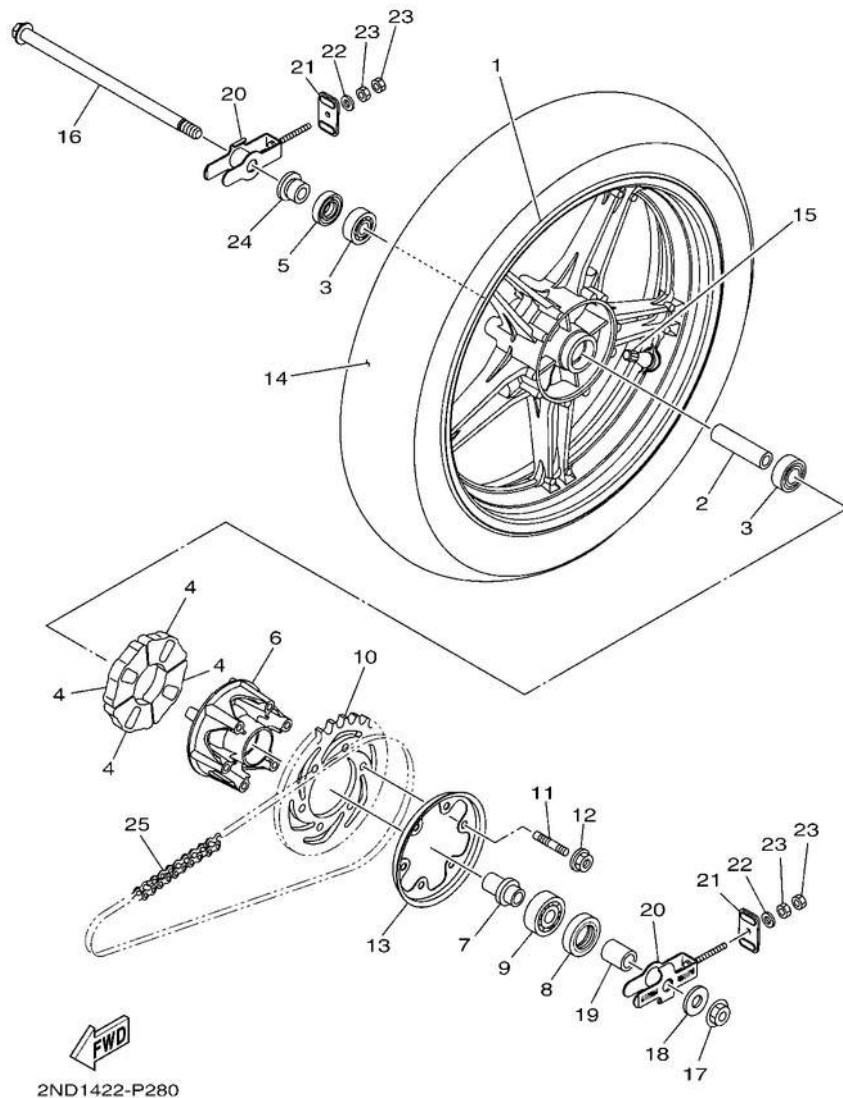
REF. NO.	PART NO.	DESCRIPTION	B17G	B17H	REMARKS
1	B17-F5168-10-P4	CAST WHEEL, FRONT	1		VYRS6 FOR BNM3
	B17-F5168-10-33	CAST WHEEL, FRONT	1		YB FOR PBMJ,DGBMJ
	B17-F5168-10-P6	CAST WHEEL, FRONT		1	MNYM3 FOR BNC2
2	90560-10292	SPACER OIL SEAL	1	1	
3	93106-20816		2	2	
4	93306-300YN	BEARING	2	2	
5	94109-17805	TIRE (90/80-17 M/C 46P D102FA)	1	1	UR DUNLOP
	94109-17809	TIRE(90/80-17 M/C 46P DM1060F)	1	1	UR DURO
6	93900-00817	VALVE, RIM (TR412)	1	1	
7	90387-10277	COLLAR	2	2	
8	3NA-F5181-01	AXLE, WHEEL	1	1	
9	90185-10091 10	NUT, SELF-LOCKING	1	1	
	90201-101J1	WASHER, PLATE	1	1	

**FIG. 27 FRONT BRAKE CALIPER**



REF. NO.	PART NO.	DESCRIPTION	B17G	B17H	REMARKS
1	2ND-F582U-12	DISK, BRAKE (RIGHT)	1	1	UR
	B17-F582U-00	DISK, BRAKE (RIGHT)	1	1	UR
2	90109-08087	BOLT CALIPER ASSY	5	5	
2PV-F580U-01	4	(RIGHT) .PISTON ASSY,	1	1	
2BM-F5802-00		CALIPER	1	1	
5	5YP-F5803-50	.CALIPER SEAL KIT	1	1	
6	2BM-F5917-00	.BOOT, CALIPER	1	1	
7	5YP-F5937-00	.BOOT 2	1	1	
8	4C9-W0048-00	.BLEED SCREW KIT	1	1	
9	2DP-F5805-00	.BRAKE PAD KIT	1	1	
10	5YP-F5925-01	.CLIP	2	2	
11	2BM-F5919-00	.SUPPORT, PAD	1	1	
12	5YP-F5924-00	.PIN, PAD	1	1	
13	2ND-F5920-00	.SUPT. BRKT. ASSY.	1	1	
14	90105-10831	BOLT, FLANGE	2	2	

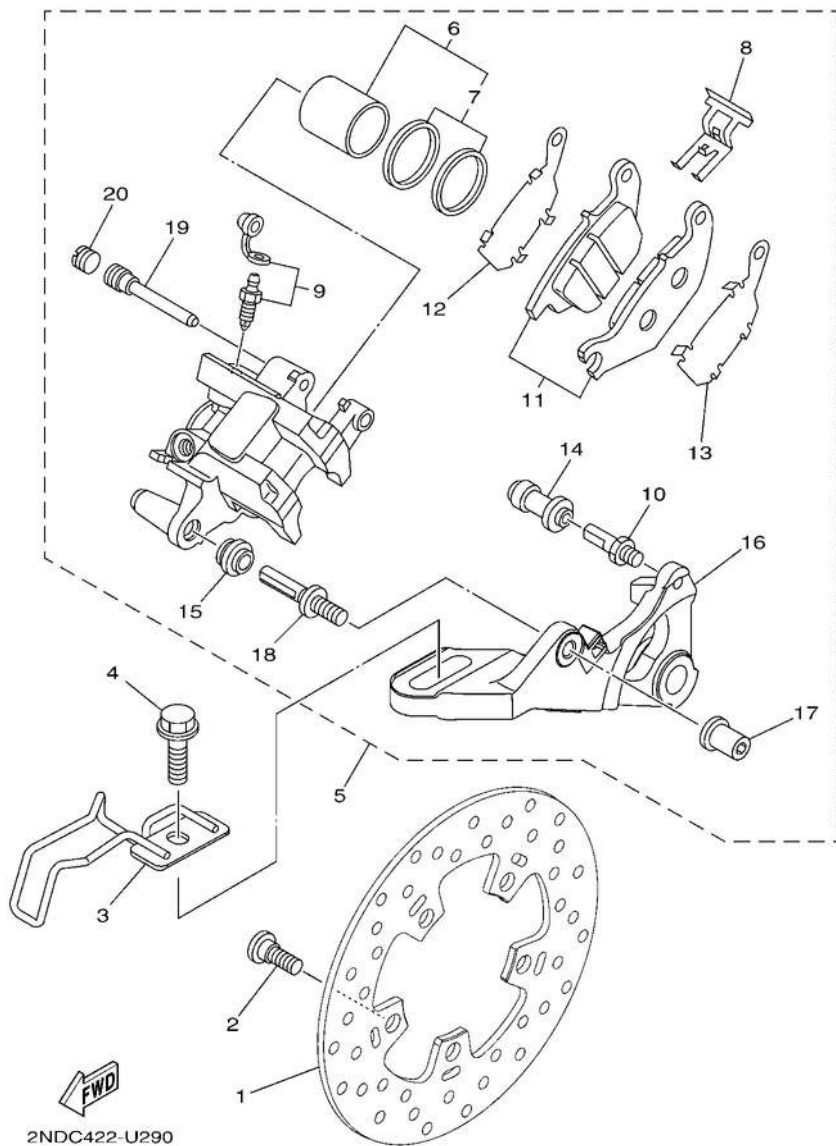
**FIG. 28 REAR WHEEL**



REF. NO.	PART NO.	DESCRIPTION	B17G	B17H	REMARKS
1	B17-F5338-10-P4	CAST WHEEL, REAR	1		VYRS6 FOR BNM3
	B17-F5338-10-33	CAST WHEEL, REAR	1		YB FOR PBMJ,DGBMJ
	B17-F5338-10-P6	CAST WHEEL, REAR		1	MNYM3 FOR BNC2
2	B17-F5317-00	SPACER, BEARING	1	1	
3	933A6-202Y9	BEARING	2	2	
4	B17-F5364-00	DAMPER	4	4	
5	93106-22808 6	OIL SEAL	1	1	
	B17-F5366-00 7	CLUTCH, HUB	1	1	
	B17-F5377-00 8	COLLAR, WHEEL	1	1	
	93106-26815	OIL SEAL	1	1	
9	93306-004XV	BEARING	1	1	
10	B17-F5442-00	SPROCKET, DRIVEN (42T)	1	1	
11	90116-08826	BOLT, STUD	6	6	
12	95602-08200	NUT, U FLANGE	6	6	
13	B17-F5689-00	PLATE, GUIDE	1	1	
14	94112-17809	TIRE (120/70-70 M/C 58P)	1	1	UR DURO
	94112-17804 15	TIRE (120/70-17 M/C 58P D102A)	1	1	UR DUNLOP
	93900-00817 16	VALVE, RIM (TR412)	1	1	
	5BP-F5381-00 17	AXLE, WHEEL	1	1	
	95602-14200	NUT, SELF-LOCKING	1	1	
18	90201-15030	WASHER, PLATE	1	1	
19	90387-15830	COLLAR PULLER,	1	1	
20	B17-F5388-01	CHAIN 1 PULLER,	2	2	UR
	2ND-F5388-00	CHAIN 1 END 1	2	2	UR
21	B17-F2174-00		2	2	
22	92902-06600	WASHER, PLATE	2	2	
23	95302-06600	NUT, HEXAGON	4	4	



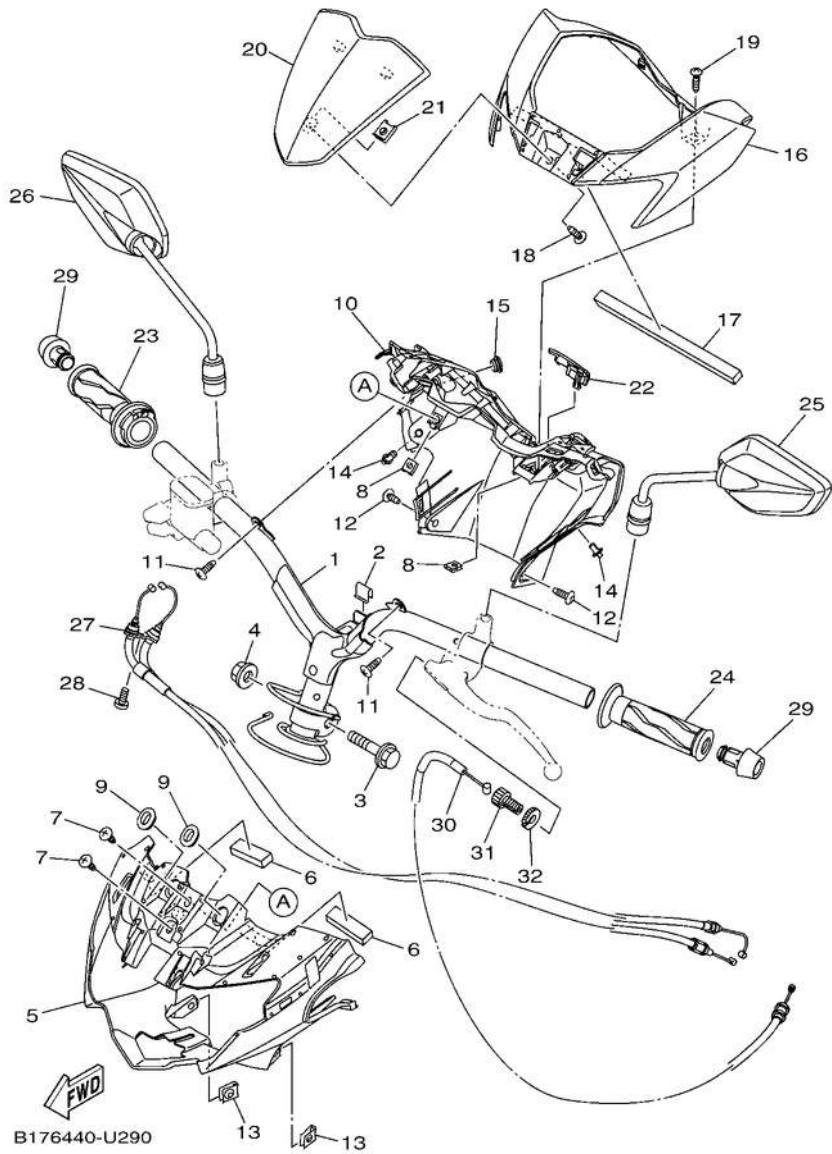
**FIG. 29 REAR BRAKE CALIPER**



2NDC422-U290

REF. NO.	PART NO.	DESCRIPTION	B17G	B17H	REMARKS
1	PV-F582W-00	DISK, REAR BRAKE 2 DISK,	1	1	UR
	B17-F582W-00	REAR BRAKE 2 BOLT GUIDE	1	1	UR
2	90109-08087	BOLT, FLANGE DEEP RECESS	5	5	
3	BAX-F2167-00		1	1	
4	95D32-10035		1	1	
5	2PV-F580W-00	CALIPER ASSY, REAR 2	1	1	
6	50C-F5802-00	.PISTON ASSY, CALIPER	1	1	
7	3GD-25803-00	..CALIPER SEAL KIT	1	1	
8	50C-F5919-00	.SUPPORT, PAD	1	1	
9	50C-W0048-00	.BLEED SCREW KIT	1	1	
10	50C-F5914-00	.PIN, SLIDE	1	1	
11	1PA-F5806-00	.BRAKE PAD KIT 2	1	1	
12	50C-F5827-00	.SHIM, CALIPER	1	1	
13	50C-F5828-00	.SHIM, CALIPER	1	1	
14	50C-F5937-00	.BOOT 2	1	1	
15	50C-F5917-00	.BOOT, CALIPER	1	1	
16	1PA-F5921-01	.BRACKET, SUPPORT	1	1	
17	50C-F5961-00	.NUT	1	1	
18	50C-2536G-00	.PIN	1	1	
19	50C-F5933-00	.PIN HANGER	1	1	
20	50C-F5916-00	.PLUG	1	1	

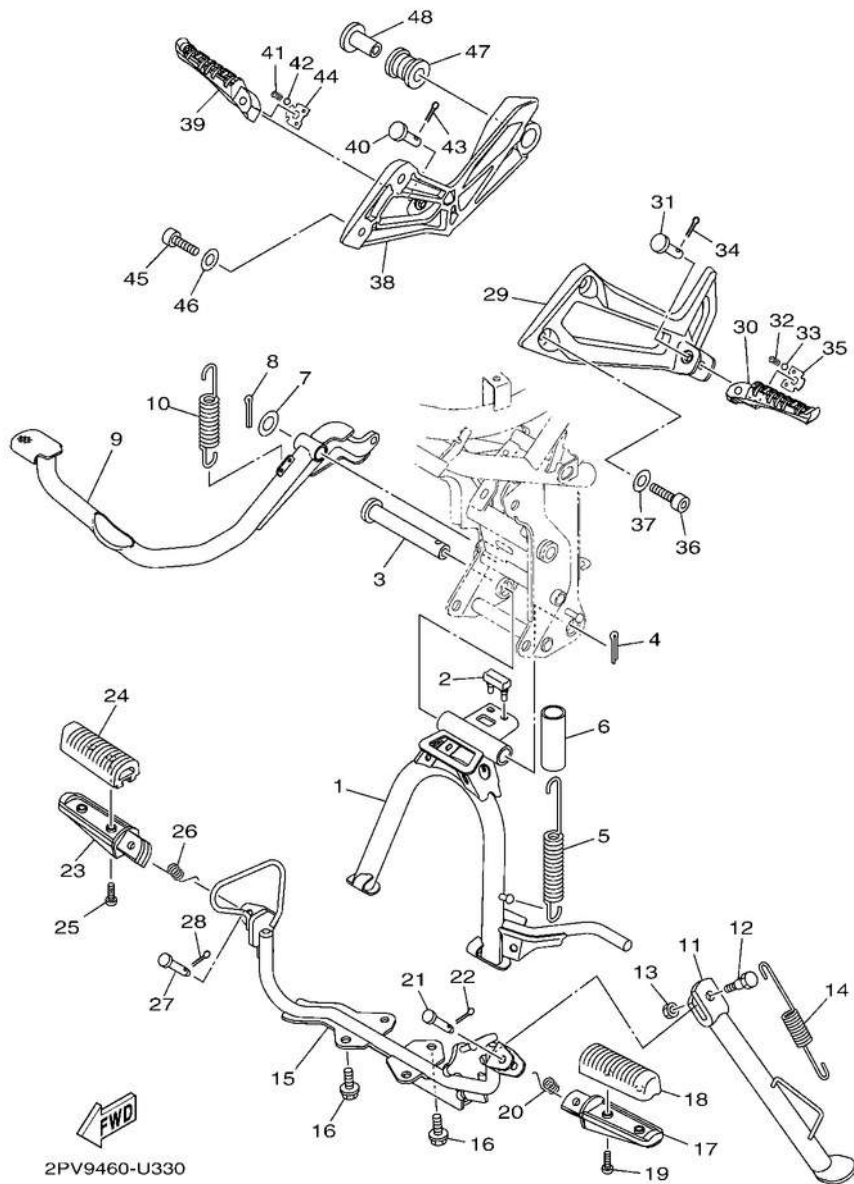




**FIG. 30 STEERING HANDLE & CABLE**

REF. NO.	PART NO.	DESCRIPTION	B17G	B17H	REMARKS
24	1VP-F6241-00	GRIP	1	1	
25	B17-F6280-10	REAR VIEW MIRROR ASSY (LEFT)	1	1	
26	B17-F6290-10	REAR VIEW MIRROR ASSY (RIGHT)	1	1	
27	B17-F6301-10	THROTTLE CABLE ASSY	1	1	
28	92012-05012	BOLT, BUTTON HEAD	1	1	
<hr/>					
29	1VB-F6246-00	END, GRIP	2	2	
30	B17-F6335-00	WIRE, CLUTCH	1	1	
31	90123-08046	BOLT	1	1	
32	90170-08401	NUT	1	1	
<hr/>					
<hr/>					
<hr/>					
<hr/>					
<hr/>					
<hr/>					
<hr/>					
<hr/>					
<hr/>					



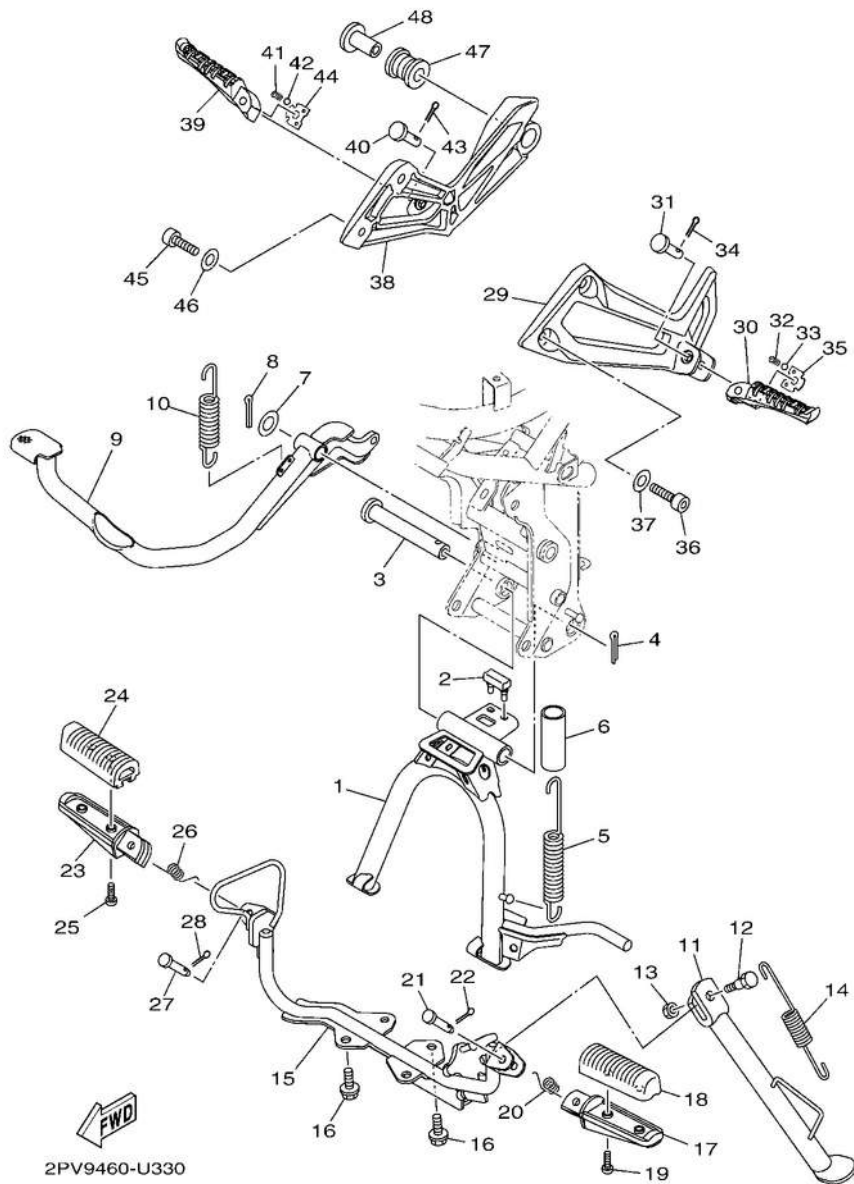


2PV9460-U330

**FIG. 32 STAND & FOOTREST**

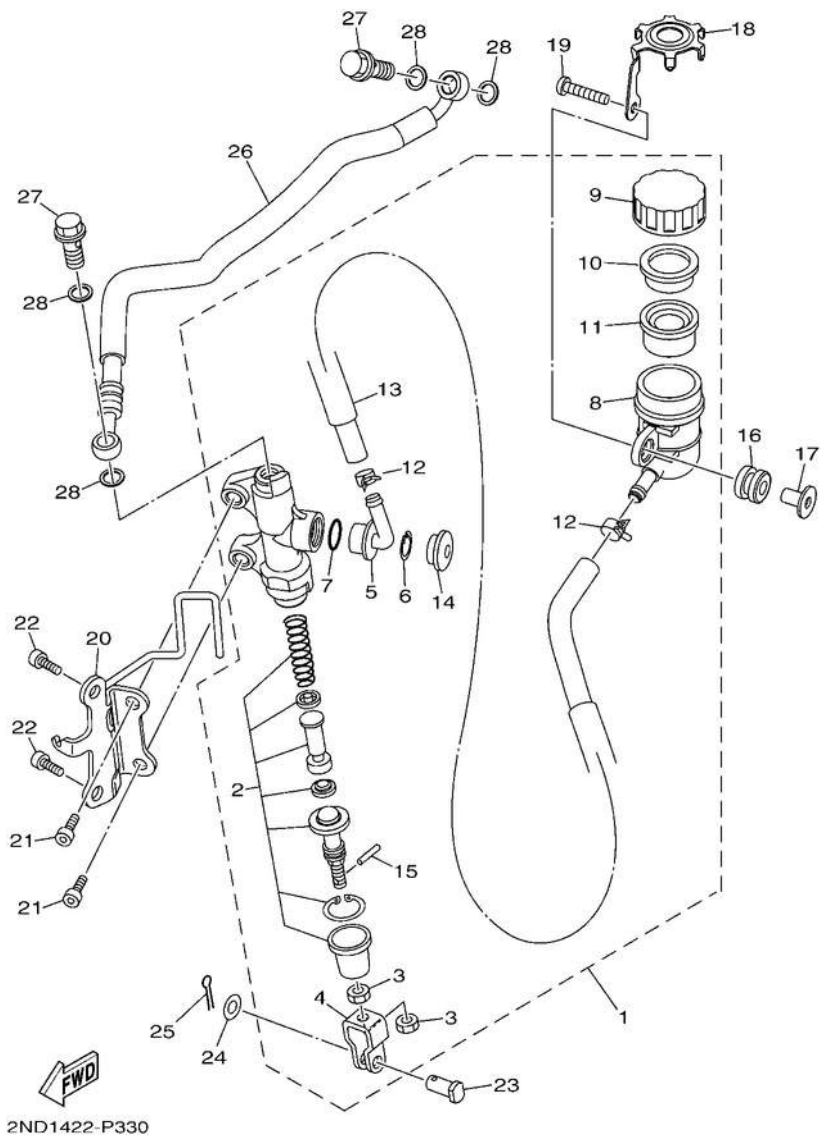
REF. NO.	PART NO.	DESCRIPTION	B17G	B17H	REMARKS
1	B17-F7111-10	STAND, MAIN	1	1	
2	31D-F7114-00	STOPPER, MAIN STAND	1	1	
3	5YP-F7112-00	SHAFT, MAIN STAND	1	1	
4	91401-30030	PIN, COTTER	1	1	
	90506-35806	SPRING, TENSION	1	1	
6	90445-22800	HOSE	1	1	
	90201-14811	WASHER, PLATE	1	1	
	91401-30030	PIN, COTTER	1	1	
	B17-F7211-10	PEDAL, BRAKE	1	1	
10	90506-20041	SPRING, TENSION	1	1	
11	B17-F7311-10	STAND, SIDE	1	1	
12	90109-08034	BOLT	1	1	
13	95307-08700	NUT	1	1	
14	90506-23809	SPRING, TENSION	1	1	
15	B17-F7411-00	FOOTREST 1	1	1	
16	95D37-08016	BOLT, FLANGE DEEP RECESS	4	4	
17	B17-F7451-00	FOOTREST 3	1	1	
18	B17-F7413-00	COVER, FOOTREST	1	1	
19	98502-05014	SCREW, PAN HEAD	2	2	
20	90508-183B9	SPRING, TORSION	1	1	
21	91701-08035	PIN	1	1	
22	91401-25015	PIN, COTTER	1	1	
23	B17-F7461-00	FOOTREST 4	1	1	
24	B17-F7413-00	COVER, FOOTREST	1	1	
25	98502-05014	SCREW, PAN HEAD	2	2	
26	90508-183B9	SPRING, TORSION	1	1	
27	91701-08035	PIN	1	1	

**FIG. 32 STAND & FOOTREST**



2PV9460-U330

REF. NO.	PART NO.	DESCRIPTION	B17G	B17H	REMARKS
28	91401-25015	29 PIN, COTTER	1	1	
B17-F7452-00-P0	30	BRACKET, FOOTREST 1	1	1	MBL2
BSM-F7431-00	31	FOOTREST, REAR 1	1	1	
91702-08042	32	PIN, CLEVIS	1	1	
90501-12743		SPRING, COMPRESSION	1	1	
33	93501-04823	BALL	1	1	
34	91401-25015	PIN, COTTER	1	1	
35	B17-F7437-00	WASHER, SPECIAL	1	1	
36	91312-08025	BOLT, HEXAGON SOCKET HEAD	2	2	
37	90201-086P8	WASHER, PLATE	2	2	
38	B17-F7462-00-P0	BRACKET, FOOTREST 2	1	1	MBL2
39	BSM-F7441-00	40 FOOTREST, REAR 2	1	1	
91702-08042	41	PIN, CLEVIS	1	1	
90501-12743	42	SPRING, COMPRESSION	1	1	
93501-04823		BALL	1	1	
43	91401-25015	PIN, COTTER	1	1	
44	B17-F7437-00	WASHER, SPECIAL	1	1	
45	91312-08025	BOLT, HEXAGON SOCKET HEAD	2	2	
46	90201-086P8	WASHER, PLATE	2	2	
47	B17-E4747-00	DAMPER, MUFFLER	1	1	
48	90387-08812	COLLAR	1	1	

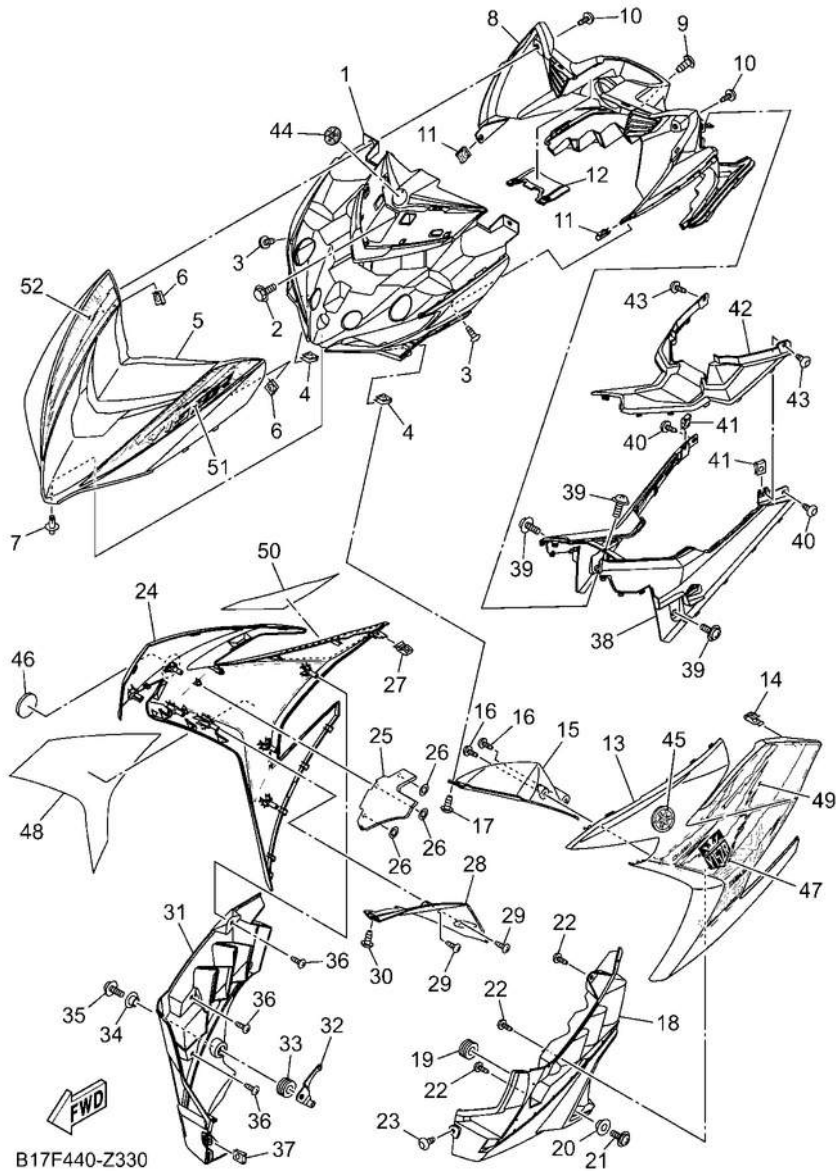


2ND1422-P330

**FIG. 33 REAR MASTER CYLINDER**

REF. NO.	PART NO.	DESCRIPTION	B17G	B17H	REMARKS
1	2ND-F580E-00	REAR MASTER CYLINDER ASSY	1	1	
2	2ND-F5808-00	.CYLINDER KIT, MASTER .NUT	1	1	
3	95301-08700	.JOINT .JOINT	2	2	
4	50C-F7222-00		1	1	
5	50C-F582A-50		1	1	
6	50C-F5866-00	.CIRCLIP	1	1	
7	93210-15620	.O-RING	1	1	
8	50C-F5894-11	.TANK, RESERVOIR	1	1	
9	50C-F5852-00	.CAP, RESERVOIR	1	1	
10	50C-F5855-00	.BUSH,DIAPHRAGM	1	1	
11	2VN-F5854-00	.DIAPHRAGM, RESERVOIR	1	1	
12	90467-12085	.CLIP	2	2	
13	4S3-F5895-00	.HOSE, RESERVOIR	1	1	
14	50C-F589A-00	.COVER, DUST	1	1	
15	5BU-27234-00	.PIN, BRAKE ROD	1	1	
16	55C-F4742-00	GROMMET	1	1	
17	55C-F6259-00	COLLAR	1	1	
18	55C-F5888-00	COVER, RESERVOIR TANK	1	1	
19	98507-06025	SCREW, PAN HEAD	1	1	
20	B17-F133F-00	BRACKET, MASTER CYLINDER	1	1	
21	91312-08020	BOLT, HEXAGON SOCKET HEAD	2	2	
22	91312-08016	BOLT, HEXAGON SOCKET HEAD	2	2	
23	90240-08124	PIN, CLEVIS WASHER, PLATE	1	1	
24	90201-08083	PIN, COTTER	1	1	
25	91401-20012		1	1	
26	2ND-F5873-21	HOSE, BRAKE 2	1	1	
27	90401-10812	BOLT, UNION	2	2	

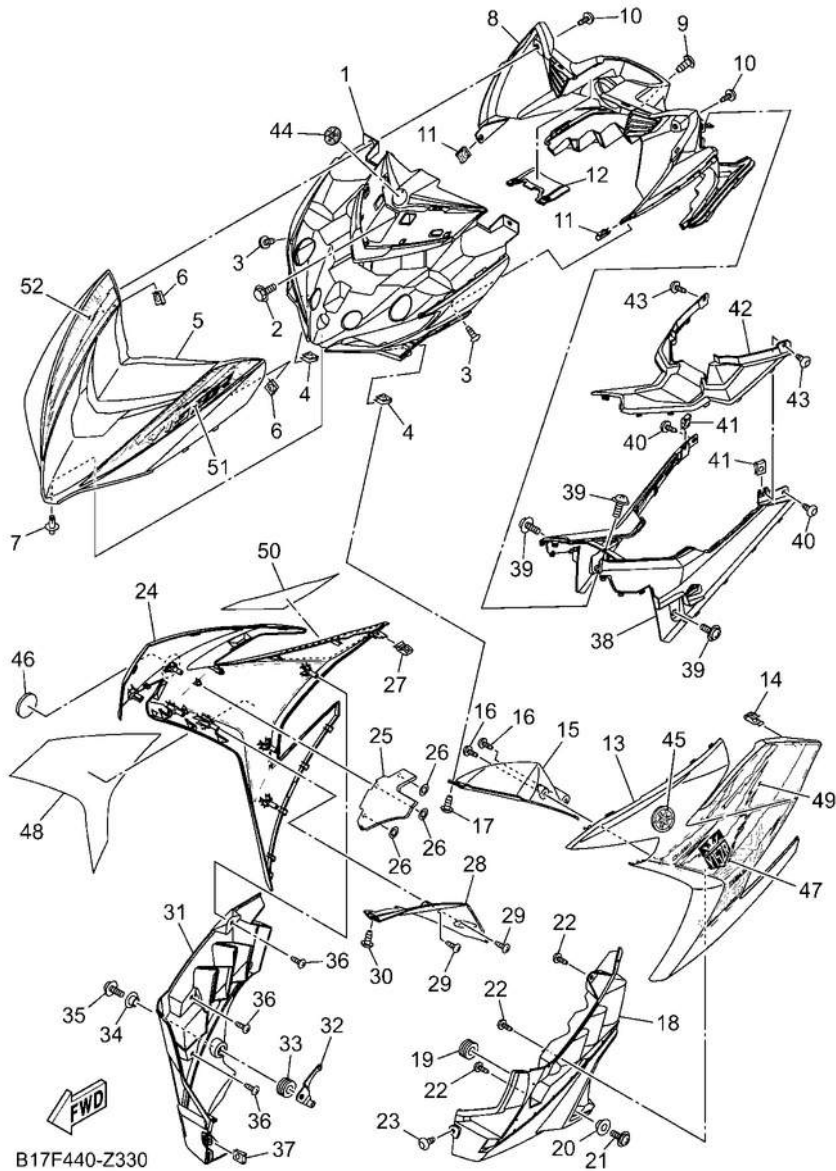




B17F440-Z330

**FIG. 34 LEG SHIELD**

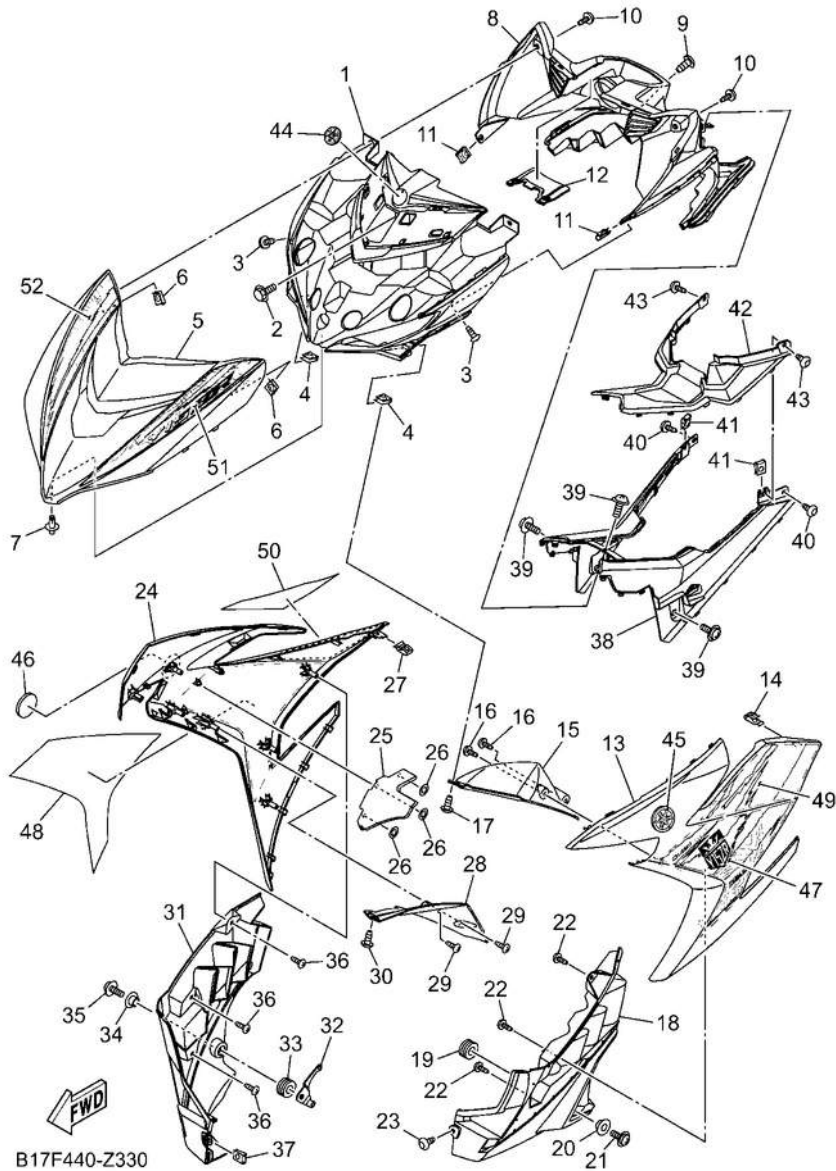
REF. NO.	PART NO.	DESCRIPTION	B17G	B17H	REMARKS
1	B17-F836K-00	2 PANEL, INNER 1	1		
	90119-06137	3 BOLT, WITH WASHER	1		
	90160-05009	4 SCREW, ROUND TAPPING	2		
	90183-05807	5 B17- NUT, SPRING	2		
	F3391-00-PF	PANEL, FRONT	1		UR FOR BNM3
	B17-F3391-00-	PANEL, FRONT	1		UR FOR PBMJ
	PG B17-F3391-	PANEL, FRONT	1		UR FOR DGBMJ
	90183-05807	7 NUT, SPRING	2		
	90269-06816	8 RIVET PANEL,	1		
	B17-F836L-00	INNER 2	1		
	9 90159-06817	SCREW, WITH WASHER	1		
	10 90160-05009	SCREW, ROUND TAPPING	2		
	11 90183-05807	NUT, SPRING	2		
	12 B17-F843J-00	COVER 3	1		
	13 B17-F835U-00-PL	PANEL 1	1		FOR BNM3
	B17-F835U-00-P1	PANEL 1	1		SMX FOR PBMJ,DGBMJ
	14 5P0-F8379-00	HOOK	1		
	15 B17-F137U-00	GUIDE, AIR 1	1		
	16 97702-40014	SCREW, TAPPING	2		
	17 90160-05009	SCREW, ROUND TAPPING	1		
	18 B17-F8385-00	COVER, LOWER	1		
	19 90480-18418	GROMMET	1		
	20 90387-09801	COLLAR	1		
	21 90159-06033	SCREW, WITH WASHER	1		
	22 97702-40014	SCREW, TAPPING	3		
	23 90160-05009	SCREW, ROUND TAPPING	1		
	24 B17-F835V-00-PL	PANEL 2	1		FOR BNM3



B17F440-Z330

**FIG. 34 LEG SHIELD**

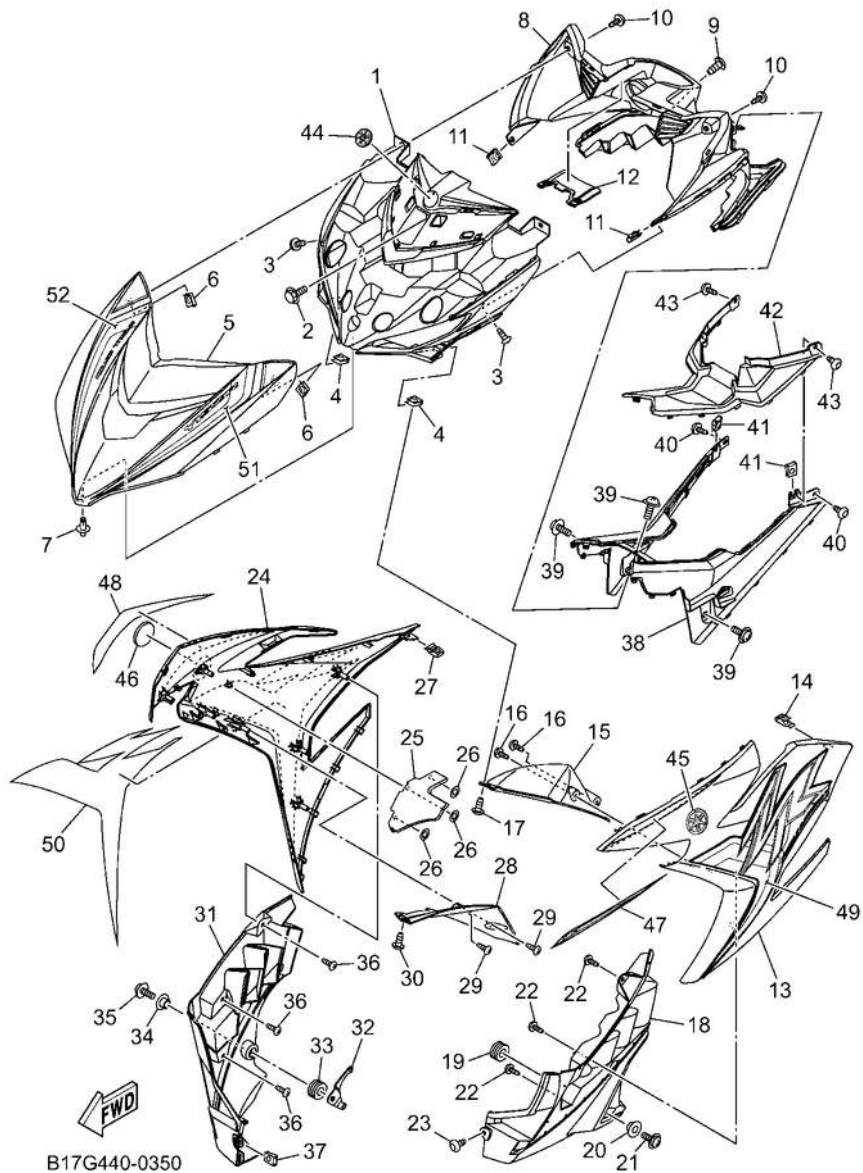
REF. NO.	PART NO.	DESCRIPTION	B17G	B17H	REMARKS
24	B17-F835V-00-P1	PANEL 2	1		SMX FOR PBMJ,DGBMJ
25	B17-F199H-00	SHIELD, HEAT	1		
26	90183-05801	NUT, SPRING	3		
27	5P0-F8379-00	HOOK	1		
28	B17-F137V-00	GUIDE, AIR 2	1		
29	97702-40014	SCREW, TAPPING	2		
30	90160-05009	SCREW, ROUND TAPPING	1		
31	B17-F8395-00	COVER, UNDER 2	1		
32	B17-F8322-00	STAY 2	1		
33	90480-18418	GROMMET	1		
34	90387-09801	35 COLLAR	1		
	90159-06033	36 SCREW, WITH WASHER	1		
	97702-40014	37 SCREW, TAPPING	3		
	90183-05807	38 B17- NUT, SPRING	1		
	F842M-00-PF	COVER 1	1		FOR BNM3
	B17-F842M-00-P2	COVER 1	1		SMX FOR PBMJ,DGBMJ
39	90159-06033	SCREW, WITH WASHER	3		
40	90160-05009	SCREW, ROUND TAPPING	2		
41	90183-05807	NUT, SPRING	2		
42	B17-F842N-00	COVER 2	1		
43	90160-05009	SCREW, ROUND TAPPING	2		
44	B17-F836B-30	TUNING FORK MARK	1		
45	B17-F836B-20	TUNING FORK MARK	1		
46	B17-F837B-20	TUNING FORK MARK	1		
47	B17-F83G4-00	GRAPHIC, 1	1		UR FOR BNM3
	B17-F83G4-	GRAPHIC, 1	1		UR FOR PBMJ
	10 B17- F83G4-20	GRAPHIC, 1	1		UR FOR DGBMJ



**FIG. 34 LEG SHIELD**

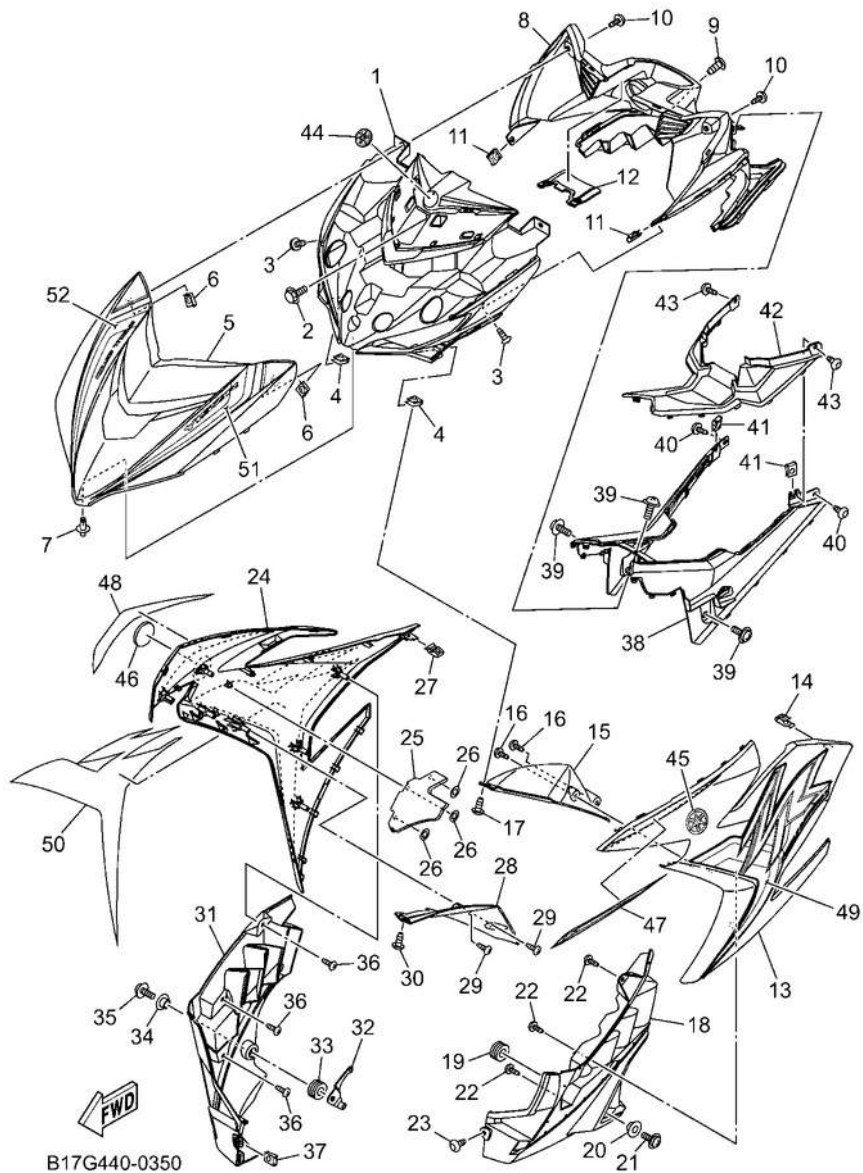
REF. NO.	PART NO.	DESCRIPTION	B17G	B17H	REMARKS
48	B17-F83G5-00	GRAPHIC, 2	1		UR FOR BNM3
	B17-F83G5-10	GRAPHIC, 2	1		UR FOR PBMJ
	B17-F83G5-20	GRAPHIC, 2	1		UR FOR DGBMJ
49	B17-F83G6-00	GRAPHIC 3	1		UR FOR BNM3
	B17-F83G6-10	GRAPHIC 3	1		UR FOR PBMJ
	B17-F83G6-20	GRAPHIC 3	1		UR FOR DGBMJ
50	B17-F83G7-00	GRAPHIC, 4	1		UR FOR BNM3
	B17-F83G7-10	GRAPHIC, 4	1		UR FOR PBMJ
	B17-F83G7-20	GRAPHIC, 4	1		UR FOR DGBMJ
51	B17-F83GA-00	GRAPHIC, 7	1		UR FOR BNM3
	B17-F83GA-10	GRAPHIC, 7	1		UR FOR PBMJ
	B17-F83GA-20	GRAPHIC, 7	1		UR FOR DGBMJ
52	B17-F83GB-00	GRAPHIC, 8	1		UR FOR BNM3
	B17-F83GB-10	GRAPHIC, 8	1		UR FOR PBMJ
	B17-F83GB-20	GRAPHIC, 8	1		UR FOR DGBMJ

**FIG. 35 LEG SHIELD 2**



REF. NO.	PART NO.	DESCRIPTION	B17G	B17H	REMARKS
1	B17-F836K-00	2 PANEL, INNER 1		1	
	90119-06137	3 BOLT, WITH WASHER		1	
	90160-05009	4 SCREW, ROUND TAPPING		2	
	90183-05807	5 NUT, SPRING		2	
	B17-F3391-00-PJ	PANEL, FRONT		1	BNC2
6	90183-05807	NUT, SPRING		2	
7	90269-06816	RIVET		1	
8	B17-F836L-00	PANEL, INNER 2		1	
9	90159-06817	SCREW, WITH WASHER		1	
10	90160-05009	SCREW, ROUND TAPPING		2	
11	90183-05807	NUT, SPRING		2	
12	B17-F843J-00	COVER 3		1	
13	B17-F835U-00-PM	PANEL 1		1	BNC2
14	5P0-F8379-00	HOOK		1	
15	B17-F137U-00	GUIDE, AIR 1		1	
16	97702-40014	SCREW, TAPPING		2	
17	90160-05009	SCREW, ROUND TAPPING		1	
18	B17-F8385-00	COVER, LOWER		1	
19	90480-18418	GROMMET		1	
20	90387-09801	COLLAR		1	
21	90159-06033	22 SCREW, WITH WASHER		1	
	97702-40014	23 SCREW, TAPPING		3	
	90160-05009	24 B17- SCREW, ROUND TAPPING		1	
	F835V-00-PM	25 PANEL 2		1	BNC2
	B17-F199H-00	SHIELD, HEAT		1	
26	90183-05801	NUT, SPRING		3	
27	5P0-F8379-00	HOOK		1	

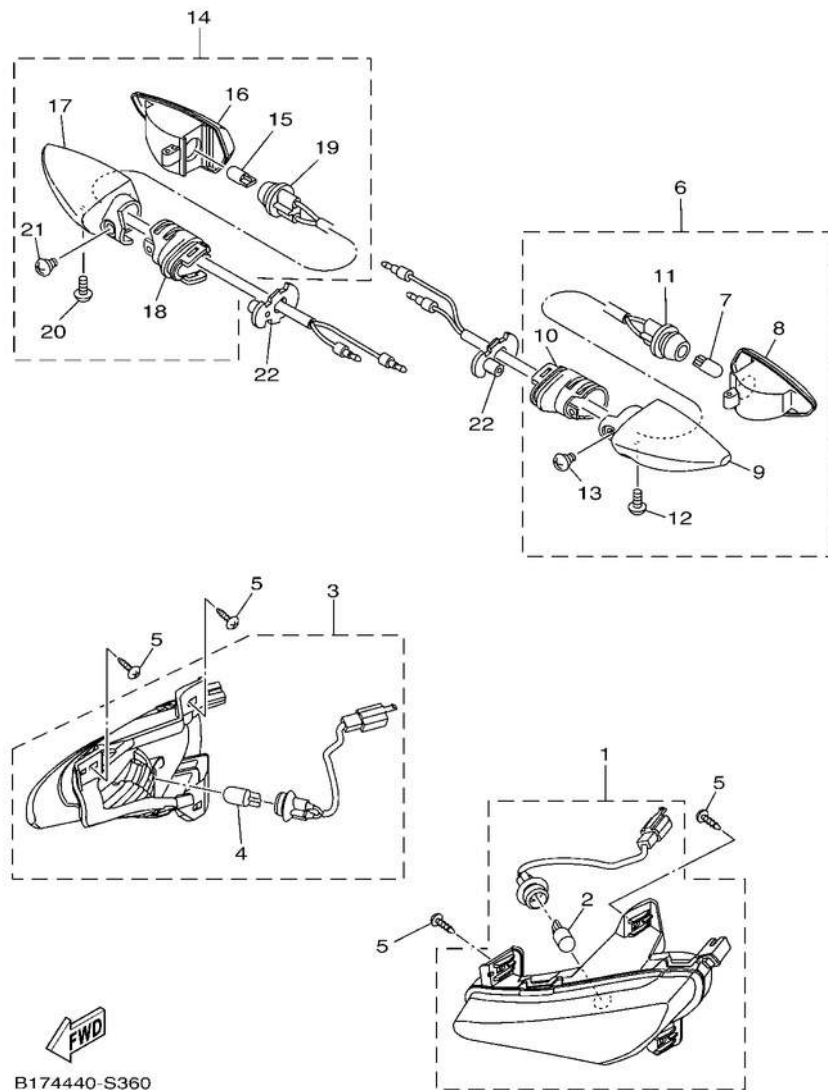
**FIG. 35 LEG SHIELD 2**



REF. NO.	PART NO.	DESCRIPTION	B17G	B17H	REMARKS
28	B17-F137V-00	GUIDE, AIR 2		1	
29	97702-40014	SCREW, TAPPING		2	
30	90160-05009	SCREW, ROUND TAPPING		1	
31	B17-F8395-00	COVER, UNDER 2		1	
32	B17-F8322-00	STAY 2		1	
33	90480-18418	GROMMET		1	
34	90387-09801	COLLAR		1	
35	90159-06033	SCREW, WITH WASHER		1	
36	97702-40014	SCREW, TAPPING		3	
37	90183-05807	NUT, SPRING		1	
38	B17-F842M-00-PG	COVER 1		1	VDOM1 FOR BNC2
39	90159-06033	SCREW, WITH WASHER		3	
40	90160-05009	SCREW, ROUND TAPPING		2	
41	90183-05807	NUT, SPRING		2	
42	B17-F842N-00	COVER 2		1	
43	90160-05009	SCREW, ROUND TAPPING		2	
44	B17-F836B-30	TUNING FORK MARK		1	
45	B17-F836B-20	TUNING FORK MARK		1	
46	B17-F837B-20	TUNING FORK MARK		1	
47	B17-F8391-Y0	GRAPHIC 1		1	
48	B17-F8392-Y0	GRAPHIC 2		1	
49	B17-F8393-S0	GRAPHIC 3		1	
50	B17-F8394-T0	GRAPHIC 4		1	
51	B17-F839A-L0	GRAPHIC 7		1	
52	B17-F839E-L0	GRAPHIC 8		1	







B174440-S360

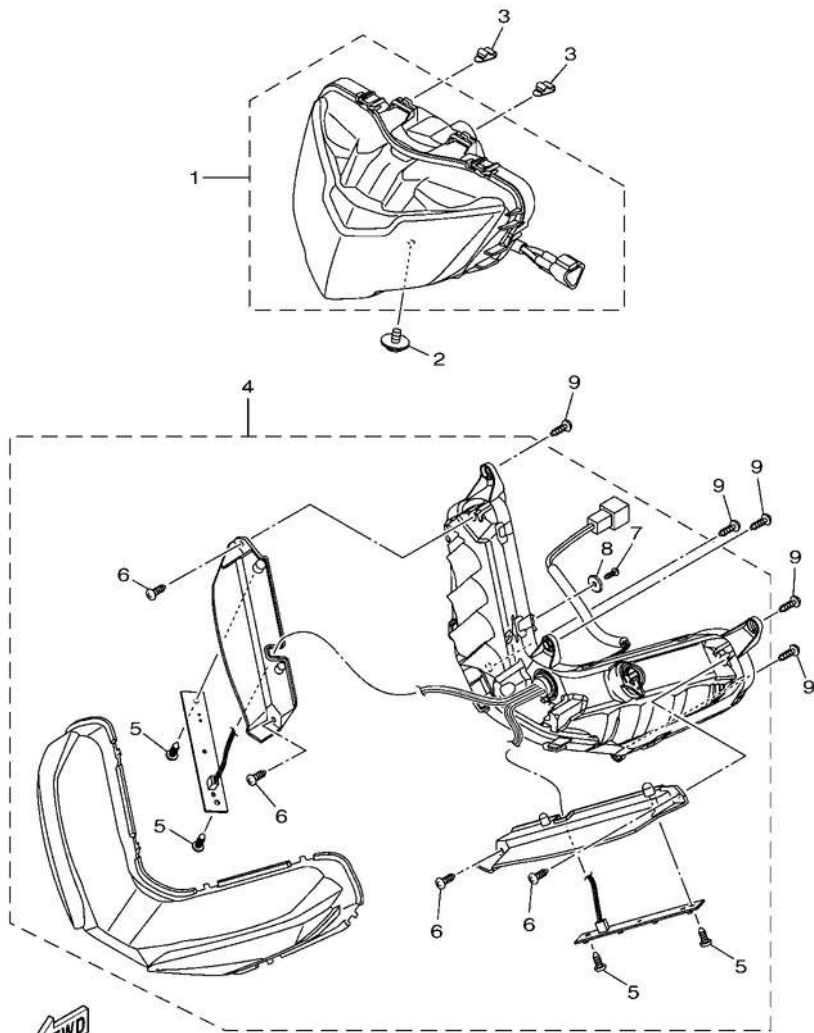
FIG. 38 FLASHER LIGHT

REF. NO.	PART NO.	DESCRIPTION	B17G	B17H	REMARKS
1	2ND-H3310-00	FRONT FLASHER LIGHT ASSY 1	1	1	
2	2CB-H3311-00	.BULB, FLASHER (12V-10W)	1	1	
3	2ND-H3320-00	FRONT FLASHER LIGHT ASSY 2	1	1	
4	2CB-H3311-00	.BULB, FLASHER (12V-10W)	1	1	
5	97702-40014	SCREW, TAPPING	4	4	
6	2CB-H3330-10	REAR FLASHER LIGHT ASSY 1	1	1	
7	55D-H3311-00 8	.BULB, FLASHER (12V-10W)	1	1	
8	55D-H333A-00 9	.LENS COMP 1	1	1	
9	55D-H3323-00 10	.BODY	1	1	
10	55D-H3328-00	.STAY, FLASHER 2	1	1	
11	2CB-H331E-10	.CORD ASSY	1	1	
12	55D-H3333-00	.SCREW, LENS FITTING	1	1	
13	55D-H3358-00	.SCREW, SPECIAL	1	1	
14	2CB-H3340-10	REAR FLASHER LIGHT ASSY 2	1	1	
15	55D-H3311-00	.BULB, FLASHER (12V-10W)	1	1	
16	55D-H334A-00	.LENS COMP 2	1	1	
17	55D-H332M-00	.BODY 2	1	1	
18	55D-H3328-00	.STAY, FLASHER 2	1	1	
19	2CB-H334E-10	.CORD ASSY	1	1	
20	55D-H3333-00	.SCREW, LENS FITTING	1	1	
21	55D-H3358-00	.SCREW, SPECIAL	1	1	
22	1VP-H3318-00	STAY, FLASHER 1	2	2	



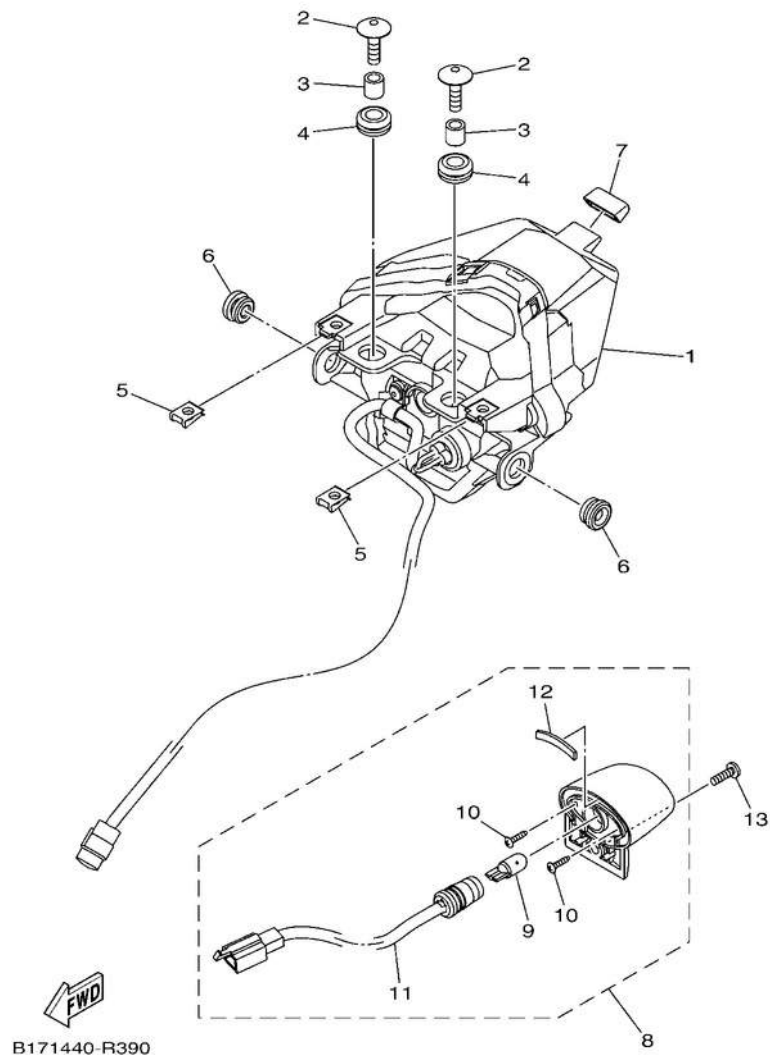
**FIG. 40 HEADLIGHT**

REF. NO.	PART NO.	DESCRIPTION	B17G	B17H	REMARKS
1	BDK-H4310-00	HEADLIGHT UNIT ASSY	1	1	UR
	2ND-H4310-11	HEADLIGHT UNIT ASSY	1	1	UR
	2ND-H4310-30	HEADLIGHT UNIT ASSY	1	1	UR
2	90119-06885	BOLT, WITH WASHER	1	1	
3	31D-H4374-00	CLIP	2	2	
4	2PV-H4301-01	PILOT LIGHT ASSY 1	1	1	
5	97702-40612	.SCREW, TAPPING	4	4	
	97702-40612	.SCREW, TAPPING	4	4	
	97702-40612	.SCREW, TAPPING	1	1	
	1KP-H4127-00	.WASHER, SPECIAL	1	1	
9	97702-50016	SCREW,TAPPING	5	5	



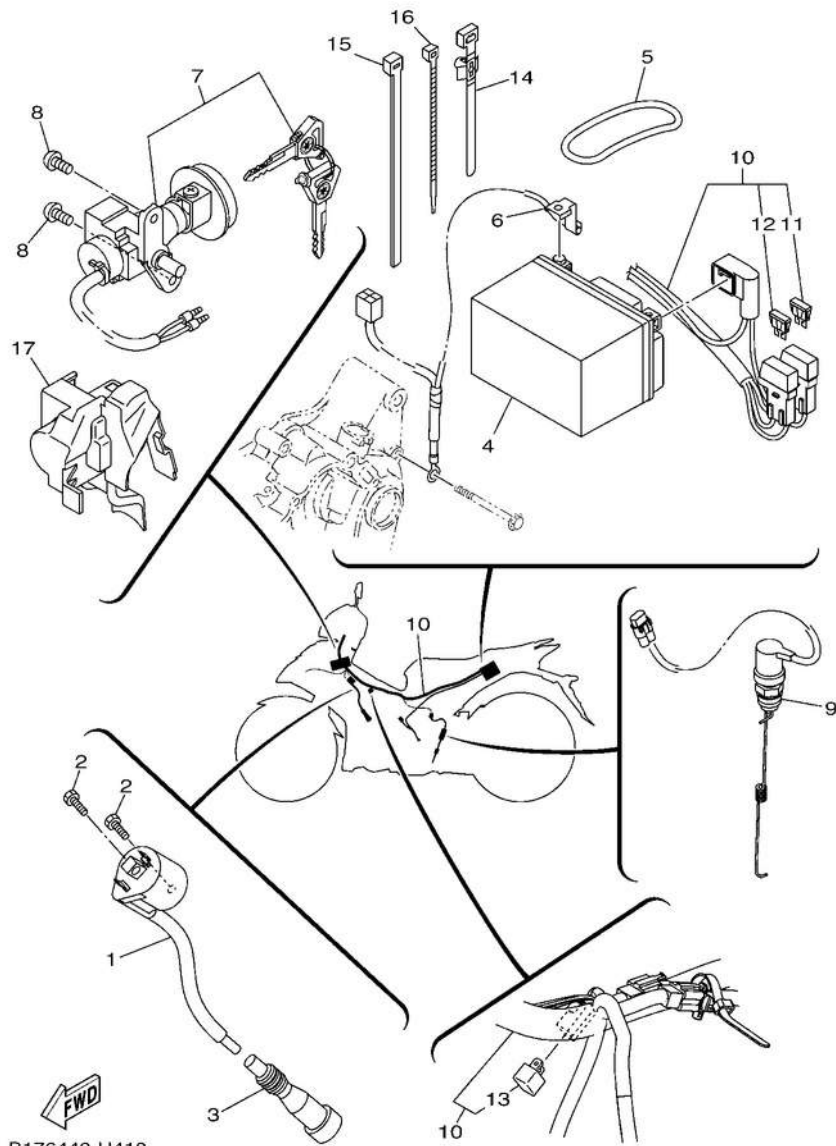
B17C440-X380

**FIG. 41 TAILLIGHT**



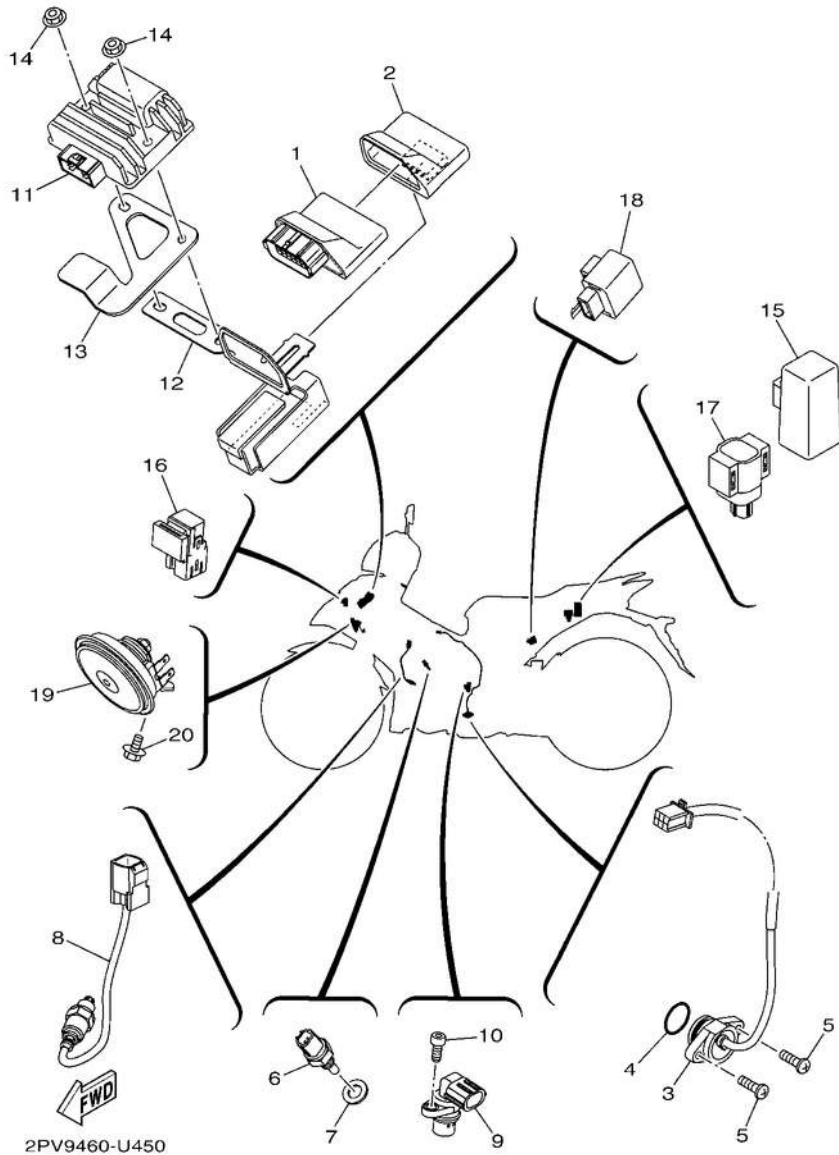
REF. NO.	PART NO.	DESCRIPTION	B17G	B17H	REMARKS
1	1WD-H4710-02	TAILLIGHT UNIT ASSY	1	1	
2	90111-06137	BOLT, HEXAGON SOCKET BUTTON	2	2	
	90387-068C2	COLLAR	2	2	
	90480-13001	GROMMET	2	2	
	90183-05807	NUT, SPRING	2	2	
6	90480-10003	GROMMET	2	2	
7	B17-H4759-00	GROMMET LICENSE	1	1	
8	2ND-H4740-00	LIGHT ASSY .BULB	1	1	
9	2ND-H4744-00	(12V-5W) .SCREW	1	1	
10	1CK-H4726-00		2	2	
11	1CK-H4547-00	.CORD, LICENCE LIGHT	1	1	
12	2ND-H4527-00	.DAMPER	1	1	
13	98907-04014	SCREW, BIND	1	1	





**FIG. 43 ELECTRICAL 1**

REF. NO.	PART NO.	DESCRIPTION	B17G	B17H	REMARKS
1	2PV-H2310-01	IGNITION COIL ASSY	1	1	
2	97002-06016	BOLT, HEXAGON	2	2	
3	2ND-H2370-00	PLUG CAP ASSY	1	1	
4	55D-H2100-00	BATTERY ASSY (PINACO PTZ5S)	1	1	
5	5VW-H2131-00	BAND, BATTERY	1	1	
6	B17-H2116-00	WIRE, MINUS LEAD	1	1	
7	B17-H252E-00	MAIN SWITCH COMP.	1	1	
8	90149-06309	SCREW	2	2	
9	2PV-H2530-01	STOP SWITCH ASSY	1	1	
10	B17-H2590-30	WIRE HARNESS ASSY	1	1	
11	1VP-H2151-00	.FUSE (15A)	1	1	
12	31D-H2151-00	.FUSE (7.5A)	1	1	
13	3WP-81980-00	.DIODE ASSY	1	1	
14	90464-34002	CLAMP	4	4	
15	90464-50800	CLAMP	2	2	
16	90464-36800	CLAMP	1	1	
17	1FC-F3472-10	PROTECTOR	1	1	



**FIG. 44 ELECTRICAL 2**

REF. NO.	PART NO.	DESCRIPTION	B17G	B17H	REMARKS
	1	2PV-H591A-12	1	1	ENGINE CONTROL UNIT ASSY
	2	2PV-H5546-10	1	1	BAND
	3	2ND-H2540-00	1	1	NEUTRAL SWITCH ASSY
	4	93210-21801	1	1	O-RING
	5	98502-05016	2	2	SCREW,PAN HEAD
	6	52B-H3591-00	1	1	THERMO UNIT
	7	90430-10807	1	1	GASKET
	8	2BM-H592A-20	1	1	SENSOR, OXYGEN
	9	B48-H3755-01	1	1	SENSOR, SPEED
	10	91332-06014	1	1	BOLT
	11	BK6-H1960-00	1	1	RECTIFIER & REGULATOR ASSY
	12	B17-F8426-10	1	1	BRACKET 1
	13	B17-F8469-00	1	1	BRKT 8
	14	95702-06500	2	2	NUT, FLANGE
	15	5TP-H1940-00	1	1	STARTER RELAY ASSY
	16	BK6-H1950-00	1	1	RELAY ASSY SENSOR, LEAN
	17	1PA-H2576-01	1	1	ANGLE FLASHER RELAY ASSY
	18	B3F-H3350-10	1	1	HORN BOLT, FLANGE DEEP
	19	B17-H3371-00	1	1	RECESS
	20	95D02-06012	1	1	

NUMERICAL INDEX

PART NO.	REF. NO.	PART NO.	REF. NO.	PART NO.	REF. NO.	PART NO.	REF. NO.	PART NO.	REF. NO.	PART NO.	REF. NO.
5YP-12411-01	6 - 1	2PV-E2170-00	4 - 1	2PV-E441J-01	8-28	45P-E6356-00	13 - 15	B17-F160E-00	18 - 18	1S9-F1871-01	19 - 15
50C-2536G-00	29 - 18	2ND-E2210-20	4-16	2PV-E4437-10	8-25	1PA-E6357-00	13 - 22	B17-F1611-01	18- 6	5YP-F1875-01	19 - 21
3GD-25803-00	297	2PV-E2213-00	4-17	5TL-E443E-00	8-23	2ND-E6358-00	13 - 14	B17-F1629-02	18 - 10		20 - 21
36Y-2589H-00	319	B63-E2223-00	5 - 2	2PV-E4450-00	8-19	45P-E6371-00	13- 7	B17-F164F-00	18 - 14		25 - 11
5BU-27234-00	33 - 15	52B-E2228-00	4-14	3C1-E4452-00	8-21	2ND-E6380-00	13 - 20	B17-F164G-00	18 - 17	B17-F1978-01	25 - 11
3WP-81980-00	43 - 13	1PA-E2231-00	4-12	2PV-E4453-00	8-20	55P-E7121-00	14 - 6	B17-F1650-00	21- 6	B17-F1978-10	34 - 25
B17-E1102-01	1 - 1	2PV-E2241-00	4-13	3C1-E4485-00	8-26	2ND-E7131-00	14 - 5	B17-F1711-00-P9	20- 1	B17-F199H-00	35 - 25
1S8-E111F-00	4 - 9	3C1-E2256-00	4-15	1S8-E4613-00	9 - 6	2ND-E7151-00	14 - 2	B17-F1711-10	19 - 1		
1S7-E1133-10	1 - 2	2PV-E2280-00	4 - 6	B17-E4703-10	9 - 1	3C1-E7211-00	14 - 12	B17-F171E-00-PH	20 - 13	BAX-F2100-00	21- 1
2PV-E1166-01	8-31	1S7-E2288-01	4 - 7	B17-E4718-00	9 - 2	BK8-E7221-00	14 - 20	B17-F171E-10	19 - 13	5B9-F2123-00	21- 2
2PV-E1193-00	1-15	2PV-E2405-00	6 - 6	B17-E4747-00	32 - 47	BK6-E7231-00	14 - 18	B17-F1721-00-P9	20 - 2	B17-F2151-10	21- 3
2PV-E1185-00	5 - 4	1S8-E2413-00	6 - 2	B17-E4799-00	9 - 4	BK6-E7241-00	14 - 17	B17-F1721-10	19 - 2	BAX-F2167-00	29- 3
B17-E1191-00	1 - 7	2PV-E2422-00	5 - 1	2PV-E5113-00	11- 7	2PV-E7251-00	14 - 14	B17-F172K-00	19 - 17	B17-F2174-00	28 - 21
2PV-E1193-00	1-11	2PV-E2428-00	5 - 3	B17-E5142-00	11 - 15	3C1-E7285-00	14 - 19		20 - 17	B17-F2210-00	21- 9
2ND-E1196-00	5 - 5	2PV-E2443-00	1 - 8	B17-E5150-00	10- 1	2ND-E7402-20	14 - 11	B17-F172L-00	19 - 22	B17-F2535-00	17- 8
2PV-E1311-10	1-19	1S7-E2450-01	5 - 7	1S8-E5351-00	7 - 3	2ND-E7411-00	14 - 1		20 - 22	B17-F3100-10	23- 1
1S8-E1351-00	1-20	2PV-E2461-00	6 - 4	B17-E5362-00	11 - 16	1S8-E7456-00	14 - 27	B17-F172M-00	19 - 25	2PV-F3110-20	23- 8
2PV-E1361-00	1-12	B17-E2481-00	6-12	55P-E5377-00	106	3C1-E7471-00	14 - 9	B17-F172M-10	20 - 25	1FC-F3111-10	23 - 16
B17-E1400-00	2 - 1	B17-E2482-00	6-14	B17-E5411-00	11+	2ND-E8101-01	16 - 4		19 - 23	2ND-F3126-00	23- 2
2ND-E1412-00	2 - 2	2PV-E2576-00	6-16	B17-E5418-00	118	B17-E8110-10	16 - 4	1S8-F172W-00	20 - 23	B17-F3136-00	23- 5
B17-E1412-00	2 - 2	5P0-E2590-00	6 - 5	B17-E5421-00	11 - 10	5H3-E8113-00	16 - 9		19 - 27	2PV-F3141-20	23 - 15
2ND-E1422-00	2 - 2	5YP-E2671-00	6 - 7	2PV-E5441-00	4-18	21C-E8140-00	16 - 10		20 - 27	5LL-F3144-00	23 - 14
B17-E1422-00	2 - 6	5YP-E2675-00	6 - 8	2PV-E5451-00	11- 2	3C1-E8337-00	16 - 1	B17-F1731-00-P5	19- 3	4UV-F3145-00	23- 3
2FB-E1454-00	2-21	2ND-E3300-01	7 - 1	2PV-E5461-00	11 - 11	2ND-E8511-00	16 - 3	B17-F1731-00-PD	19 - 3		23- 6
21C-E1496-20	2-16	2PV-E3300-01	7 - 1	B17-E5514-00	12- 2	2ND-E8512-00	15 - 4	B17-F1731-00-PE	19 - 3	2JG-F3147-00	23 - 17
BK6-E1531-10	2-22	2PV-E3324-00	7 - 1	38B-E5521-00	12- 3	2ND-E8513-00	15 - 5	B17-F1731-00-PF	20 - 3	5TF-F3152-00	23 - 11
BK6-E1536-00	2-15	B17-E3327-00	7 - 8	2PV-E5524-10	12- 6	1PA-E8531-00	15 - 6	B17-F173D-10	20 - 33	5P0-F3153-00	23 - 18
3C1-E1549-10	2 - 7	38B-E3411-00	7-13	2PV-E5572-00	12 - 6	38B-E8531-00	15 - 7		20 - 34	5P0-F3156-00	23 - 4
2PV-E1603-00	2 - 14	38B-E3440-01	7 - 4	2PV-E5580-00	12 - 12	2PV-E8540-10	15 - 7	B17-F173E-Y0	20 - 31	2ND-F3157-00	23 - 7
2ND-E1631-00	2-11	55C-E3447-00	7 - 7	5YP-E5580-00	12 - 9	5TP-E8542-00	15 - 1	B17-F173F-Y0	20 - 32	509-F3158-L0	23 - 10
2ND-E1633-00	2-11	2FB-E3556-00	7 - 9	5HV-E5583-00	12 - 9	B17-F1110-10	15 - 2	B17-F1741-00-P5	19 - 8	2ND-F3170-10	23 - 12
3C1-E1651-11	2-12	2PV-E3557-00	8 - 2	2PH-E5583-10	12 - 10	B17-F113J-00	17 - 1	B17-F1741-00-PD	19 - 8	31D-F3181-50	23 - 9
3C1-E1681-10	2 - 5	2PV-E3585-00	8-12	1ST-E5614-00	12 - 10	B17-F113K-00	23 - 22	B17-F1741-00-PE	19 - 8	B17-F31G1-00	23 - 13
1S7-E1951-00	2 - 3	1PA-E3635-00	8 - 1	5YP-E5614-00	12 - 11	55P-F1173-00	23 - 26	B17-F1741-00-PE	19 - 8	B17-F31G2-00	23 - 29
1S7-E1952-02	5 - 8	2PV-E3750-03	8 - 1	3C1-E6111-00	12 - 11	B17-F133F-00	19 - 24	B17-F1741-00-PF	20 - 8	B17-F331A-10	23 - 30
2PV-E2111-00	5 - 9	BB8-E3761-10	8 - 3	45P-E6135-00	13 - 1	B17-F137U-00	20 - 24	B17-F17F1-00	19 - 31	B17-F3340-00	23 - 30
B48-E2113-00	3 - 1	BK6-E3767-00	8-15	3C1-E6144-00	13 - 18	B17-F137V-00	33 - 20	B17-F17F1-10	19 - 31	31B-F3346-00	22 - 8
1PA-E2117-00	3 - 4	BB8-E3770-10	8 - 7	2PV-E6150-00	13 - 18		34 - 15	B17-F17F1-20	19 - 31	B17-F334G-00	23 - 19
3S0-E2118-00	3 - 6	2ND-E3907-00	8-14	2ND-E6154-00	13 - 16		35 - 15	B17-F17F2-00	19 - 31	B17-F3391-00-PF	23 - 21
1PA-E2119-00	3 - 5	54P-E3915-00	8 - 6	38B-E6193-00	13 - 5	2PV-F1398-10	34 - 28	B17-F17F2-10	19 - 32	B17-F3391-00-PG	22 - 14
2PV-E2121-00	3 - 3	2PV-E3938-00	24 - 7	2PV-E6321-00	13 - 6	B17-F1511-10-P0	35 - 28	B17-F17F2-20	19 - 32	B17-F3391-00-PH	34 - 5
55P-E2126-00	3 - 2	2PV-E3971-01	24 - 8	2UP-E6321-00	13 - 2	B17-F1511-10-PM	25 - 12	B17-F17F3-00	19 - 32	B17-F3391-00-PJ	34 - 5
2ND-E2151-01	3 - 7	54P-E4137-00	8-10	2PV-E6324-00	13 - 8	B17-F1511-10-PN		B17-F17F3-10	19 - 33		34 - 5
1CK-E2156-00	3 - 8	54P-E4147-00	24 - 13	2ND-E6333-00	13 - 9	B17-F1511-10-PP	18 - 1	B17-F17F3-20	19 - 33	4FP-F3411-10	34 - 5
5YP-E2157-01	3-14	5CA-E4147-00	8-11	45P-E6337-00	13 - 10	B17-F1513-00	18 - 1	B17-F17F4-00	19 - 33	B17-F3411-10	35 - 5
2ND-E2159-00	4 - 8	2PV-E4199-00	8 - 8	3C1-E6344-00	13 - 12	B17-F1514-00	18 - 1	B17-F17F4-10	19 - 34	4RT-F3411-10	23 - 20
2ND-E2161-01	3 - 9	2PV-E4411-00	8 - 9	2PV-E6345-00	13 - 13	5LW-F153E-30	18 - 1	B17-F17F4-20	19 - 34	1KL-F3412-10	22 - 4
	3-12	2PV-E4412-00	8 - 4	45P-E6351-00	13 - 17		18 - 2	55C-F1817-00	19 - 29	4RT-F3412-10	22 - 4
	3-11		8-17		13 - 21		18 - 3		20 - 29	5TL-F3416-01	22 - 1
			8-18		13 - 11		18 - 21				22 - 6

NUMERICAL INDEX

PART NO.	REF. NO.	PART NO.	REF. NO.	PART NO.	REF. NO.	PART NO.	REF. NO.	PART NO.	REF. NO.	PART NO.	REF. NO.
1P6-F341E-10	22- 5	2DP-F5805-00	27- 9	B17-F6143-10	30- 5	B17-F836B-30	20- 30 34- 44 35- 44	B17-F843J-00	34- 12 35- 12 44- 13	B3F-H3350-10	44- 18 38- 13
5VL-F341E-10	22- 2	1PA-F5806-00	29- 11	B17-F6145-10	30- 10			B17-F8469-00	36- 2	55D-H3358-00	38- 21 44- 19
1FC-F3472-10	43- 17	2ND-F5808-00	33- 2	4US-F6199-00	30- 15	B17-F836K-00	34- 1 35- 1	2PV-H1410-02	36- 1	B17-H3371-00	
B17-F4100-01	24- 1	5P0-F580A-00	31- 6	B17-F61AA-00-P1	30- 20			2PV-H1450-01	36- 1	2PV-H3571-00	39- 1
2ND-F414G-00	30- 2	2ND-F580E-00	33- 1	B17-F61AA-00-PB	30- 20	B17-F836L-00	34- 8	2PV-H1800-02	37- 1	52B-H3591-00	39- 2
1DB-F414G-01	24- 10	2PV-F580U-01	27- 3	B17-F61AA-00-PC	30- 20			2PH-H1801-10	37- 2	B17-H3614-00	44- 6
B17-F41B1-00	24- 16	2PV-F580W-00	29- 5	B17-F6216-10-P0	30- 16	1S8-F8372-00	35- 8	5D9-H1828-00	37- 5	B48-H3755-01	39- 4
B17-F4452-00	24- 17	50C-F5827-00	29- 12	B17-F6216-10-P9	30- 16	5P0-F8379-00	24- 6 34- 14 34- 27	5D7-H183G-00	37- 3	55P-H3912-10	44- 9
BAX-F4491-00	24- 11	50C-F5828-00	29- 13	B17-F6216-10-PA	30- 16			5D9-H1861-00	37- 4	2ND-H3922-00	42- 8
4YY-F4610-00	24- 14	50C-F582A-50	33- 5	B17-F6240-02	30- 23			5TP-H1940-00	44- 15	45P-H395W-00	31- 13
4YY-F4612-00	24- 15	B17-F582U-00	27- 1	1VP-F6241-00	30- 24			BK6-H1950-00	44- 16	BK6-H395W-00	42- 3
B17-F470F-00	25- 2	2ND-F582U-12	27- 1	1VB-F6246-00	30- 29	B17-F837B-20	34- 46	BK6-H1960-00	44- 11	2PV-H3963-00	42- 5
B17-F470F-80	25- 2	2PV-F582W-00	29- 1	55C-F6259-00	33- 17	B17-F8385-00	35- 46	55D-H2100-00	43- 4	2PV-H3973-00	42- 1
5VT-F4723-00	25- 3	B17-F582W-00	29- 1	B17-F6280-10	30- 25	B17-F8391-Y0	34- 18	B17-H2116-00	43- 6	2DP-H3980-01	42- 4
2WB-F4727-00	25- 3	2PV-F583T-12	31- 4	B17-F6290-10	30- 26	B17-F8392-Y0	35- 18	5VW-H2131-00	43- 5	1KP-H4127-00	31- 16
B17-F4730-01	25- 4	2ND-F5852-00	31- 8	B17-F6301-10	30- 27	B17-F8393-S0	35- 47	1WD-H2133-00	42- 6	2PV-H4301-01	40- 8
B17-F4730-40	25- 1	50C-F5852-00	33- 9	B17-F6305-00	30- 30	B17-F8394-T0	35- 48	45P-H2133-00	42- 2	BDK-H4310-00	40- 4
B17-F4730-80	25- 1	2ND-F5854-00	31- 7	B17-F6477-00	30- 22	B17-F8395-00	35- 49	1VP-H2151-00	43- 11	2ND-H4310-11	40- 1
B17-F4730-90	25- 1	2VN-F5854-00	33- 11	B17-F7111-10	32- 1	B17-F839A-L0	35- 50	31D-H2151-00	43- 12	2ND-H4310-30	40- 1
55C-F4742-00	25- 1	2ND-F5855-00	31- 11	5YP-F7112-00	32- 3	B17-F839A-L0	35- 31	2PV-H2310-01	43- 1	31D-H4374-00	40- 1
B17-F4773-00-P5	33- 16	50C-F5855-00	33- 10	31D-F7114-00	32- 2	B17-F839E-L0	35- 51	2ND-H2370-00	43- 3	2ND-H4527-00	40- 3
B17-F4773-00-PE	25- 9	50C-F5866-00	33- 9	B17-F7211-10	32- 9	B17-F83G4-00	35- 52	B17-H252E-00	43- 7	1CK-H4547-00	41- 12
1DY-F4780-00	25- 9	5TL-F5867-11	33- 6	50C-F7222-00	32- 9	B17-F83G4-10	34- 47	2PV-H2530-01	43- 9	1WD-H4710-02	41- 11
B17-F4780-00	25- 9	2ND-F5870-00	31- 12	B17-F7311-10	33- 4	B17-F83G4-20	34- 47	2ND-H2540-00	43- 9	1PA-H2576-01	44- 3
B17-F478E-00	25- 5	2PV-F5872-02	31- 5	B17-F7411-00	32- 11	B17-F83G5-10	34- 47	1PA-H2590-30	44- 17	55P-H2911-00	43- 10
B17-F478X-00	25- 7	2ND-F5873-21	31- 1	B17-F7413-00	32- 15	B17-F83G5-20	34- 47	55P-H2917-00	43- 10	2ND-H4744-00	41- 10
B17-F5168-10-33	17- 2	B17-F5876-00	33- 26	BSM-F7431-00	32- 24	B17-F83G6-00	34- 48	2ND-H4759-00	42- 7	B17-H4759-00	41- 8
B17-F5168-10-P4	26- 1	2PV-F587A-00	22- 12	B17-F7437-00	32- 30	B17-F83G6-10	34- 48	2ND-H3310-00	42- 11	BSM-H5111-00	41- 9
B17-F5168-10-P6	26- 1	55C-F5888-00	22- 10	BSM-F7441-00	32- 35	B17-F83G6-20	34- 49	2CB-H3311-00	38- 1	55D-H5130-00	23- 23
3NA-F5181-01	26- 1	3RW-F5889-00	33- 18	B17-F7451-00	32- 39	B17-F83G7-00	34- 49		38- 2	2PV-H5546-10	23- 27
B17-F5317-00	26- 8	50C-F5894-11	31- 10	B17-F7452-00-P0	32- 17	B17-F83G7-10	34- 49	55D-H3311-00	38- 4	2ND-H5752-00	18- 13
B17-F5338-10-33	28- 2	4S3-F5895-00	33- 8	B17-F7461-00	32- 29	B17-F83G7-20	34- 50	1VP-H3318-00	38- 7	2PV-H591A-12	44- 2
B17-F5338-10-P4	28- 1	50C-F5899-00	33- 13	B17-F7462-00-P0	32- 29	B17-F83GA-00	34- 50	2CB-H331E-10	38- 15	2BM-H592A-20	24- 9
B17-F5338-10-P6	28- 1	50C-F589A-00	33- 14	B17-F8100-10	32- 23	B17-F83GA-10	34- 50	2ND-H3320-00	38- 22	4C9-W0048-00	44- 1
B17-F5364-00	28- 1	50C-F5914-00	29- 10	B17-F8170-01	18- 19	B17-F83GA-20	34- 51	55D-H3323-00	38- 11	50C-W0048-00	44- 8
B17-F5366-00	28- 4	50C-F5916-00	29- 10	B17-F8322-00	18- 20	B17-F83GB-00	34- 51	55D-H3328-00	38- 3	90105-10831	27- 8
B17-F5377-00	28- 6	2BM-F5917-00	29- 20	B17-F835U-00-P1	34- 32	B17-F83GB-10	34- 51		38- 9	90105-10855	29- 9
4NP-F5381-00	28- 7	50C-F5919-00	27- 6	B17-F835U-00-PL	35- 32	B17-F83GB-20	34- 52	55D-H332M-00	38- 10	90105-10896	27- 14
5BP-F5381-00	21- 4	2ND-F5920-00	27- 11	B17-F835U-00-PM	34- 13	B17-F8426-10	34- 52	2CB-H3330-10	38- 18	90105-108B4	21- 10
1CK-F5383-00	28- 16	1PA-F5921-01	29- 8	B17-F835V-00-P1	34- 13	B17-F842M-00-P2	34- 52	55D-H3333-00	38- 17	90105-108B5	30- 3
B17-F5383-00	28- 24	5YP-F5924-00	27- 13	B17-F835V-00-PL	35- 13	B17-F842M-00-PF	44- 12		38- 6	90109-06279	17- 5
2ND-F5388-00	28- 24	50C-F5933-00	29- 16	B17-F835V-00-PM	34- 24	B17-F842M-00-PG	34- 38	55D-H333A-00	38- 12	90109-06577	17- 4
B17-F5388-01	28- 20	5YP-F5925-01	27- 12	B17-F836B-20	35- 24	B17-F842N-00	34- 38	2CB-H3340-10	38- 20	90109-06827	16- 2
B17-F5442-00	28- 20	50C-F5937-00	27- 10		34- 45			55D-H334A-00	38- 8	90109-068A4	31- 14
B17-F5689-00	28- 10	5YP-F5937-00	29- 19	B17-F836B-30	35- 45			2CB-H334E-10	38- 14	90109-08034	42- 9
2BM-F5802-00	28- 13	50C-F5961-00	29- 14		19- 30				38- 16		18- 4
50C-F5802-00		B17-F6110-10	27- 7						38- 19		32- 12
5YP-F5803-50	27- 4 29- 6 27- 5		29- 17 30- 1								

NUMERICAL INDEX

PART NO.	REF. NO.	PART NO.	REF. NO.	PART NO.	REF. NO.	PART NO.	REF. NO.	PART NO.	REF. NO.	PART NO.	REF. NO.
90109-08087	27- 2	90170-05803	3-10	90201-15030	28- 18	90450-39806	8-34	91312-08020	16- 11	93306-054XB	14- 7
	29- 2		3-13	90201-15821	2-17	90450-48803	8-16		33- 21	93306-204Y7	14- 24
90110-06873	12- 13	90170-08401	30- 32	90201-173F4	14- 22	90464-16012	21- 8	91312-08025	32- 36	93306-252Y9	2-24
90111-06137	41- 2	90170-10012	2-28	90201-20814	14- 21	90464-34002	43- 14		32- 45	93306-253YB	2-25
90111-06807	9- 3	90179-10805	17- 6	90201-25290	12- 8	90464-36800	39- 6	91317-06020	42- 12	93306-300YN	26- 4
	9- 5	90179-12808	13- 4	90208-20003	13- 27		43- 16		24- 12	93306-305X7	2- 9
90111-06848	18- 11	90179-14001	13- 19	90209-17285	14- 15	90464-50800	43- 15	91332-05010	44- 10	93306-305XP	2- 8
90116-08826	28- 11	90183-05801	22- 7	90209-18208	14- 15	90464-54086	18- 7	91332-06014	36- 4	93306-305XR	2- 9
90119-06044	188		34- 26	90214-10800	2-18	90467-10805	6-17	91332-06016	36- 3	93306-305YF	2- 8
	19- 16	90183-05807	35- 26	90215-10284	2-27	90467-12085	33- 12	91401-20012	33- 25	93306-906Y4	4- 2
	20- 16		18- 9	90240-08124	33- 23	90467-12800	8-24	91401-25015	32- 22	93310-325X1	12- 7
90119-06137	8-30		19- 6	90269-06816	18- 12	90467-13064	8-32		32- 28	93310-528YK	2- 4
	34- 2		19- 11		19- 7	90467-13858	8-33		32- 34	93315-112Y9	13- 24
	35- 2		20- 6		19- 12	90467-20804	8-27		32- 43	933A6-202X0	14- 8
90119-06155	21- 7		20- 11		20- 7	90467-22801	8-29	91401-	324	933A6-202Y9	28- 3
	40- 2		30- 8		20- 12	90480-01559	17- 7		328	93410-20809	14- 4
90119-06885	30- 31		30- 13		30- 14	90480-10003	30- 9	30030	32- 21	93410-22039	14- 16
90123-08046			30- 21		34- 7	90480-13001	41- 6		32- 27	93450-16115	2-13
90149-06309	43- 8		34- 4		35- 7	90480-13018	41- 4	91701-	32- 31	93501-04823	32- 33
90159-06033	34- 21		34- 6	90280-03017	2-10		19- 20		32- 40		32- 42
	34- 35		34- 11	90282-05031	2-26	90480-15808	20- 20	08035	1-16	93505-16844	13- 23
	34- 39		34- 37	90338-30802	12- 1	90480-18418	9		1-17	93604-08071	2-20
	35- 21		34- 41	90340-12813	1- 3		34- 19	91702-	10- 2	93605-06800	4- 4
	35- 35		35- 4	90340-14824	11- 5		34- 33		10- 3	93608-30839	4- 2
	35- 39		35- 6	90387-06144	19- 19		35- 19		11- 12	93822-14800	16- 7
90159-	34- 9		35- 11	90387-068C2	20- 19		35- 33	08042	30- 28	93900-00817	14- 26
	35- 9		35- 37	90387-08812	41- 3	90480-18810	24- 4	92012-05012	28- 22	94109-17805	26- 6
06817	19- 4		35- 41	90387-08835	32- 48	90480-18811	24- 5	<del>92800</del> -06600	11- 18	94109-17809	28- 15
	19- 9		39- 8	90387-09801	24- 3	90501-030A0	12- 12	93101-10843	13- 25	94112-17804	26- 5
90160-	19- 14		41- 5		34- 20	90501-06022	15- 3	<del>93802</del> -12862		94112-17809	26- 5
	20- 4	90185-05803	23- 24		34- 34	90501-06800	15- 8	93102-12891	16- 8	94568-D6122	28- 14
05009	20- 9	90185-10011	23- 28		35- 20	90501-12743	32- 32	93102-20892	14- 25	94568-H4096	28- 14
	20- 14	90185-10091	30- 4		35- 34	90501-16800	32- 41	93106-20816	26- 3	94700-00330	28- 25
	30- 12	90201-06880	26- 9	90387-	26- 7	90501-18576	2-19	93106-22808	28- 5	95022-06012	4-11
	34- 3	90201-08083	6-11	10277	2-23	90501-18576	7- 5	93106-26815	28- 8	95022-06025	1-14
	34- 10	90201-08612	33- 24	90387-	28- 19	90506-20041	32- 10	93210-09806	4- 3	95022-06102	5-12
	34- 17	90201-086P8	9- 8	15810	14- 13	90506-23809	32- 14	93210-148F8	11- 6	95302-06600	5-11
	34- 23	90201-08730	32- 37	90387-	312	90506-35806	32- 14	93210-15620	33- 7	95307-08700	32- 3
	34- 30	90201-08859	32- 46	15830	33- 27	90508-183B9	32- 5	93210-19809	5-15	95307-08700	32- 3
	34- 40	90201-10118	9-10	90387-	312	90508-32837	32- 5	93210-21801	11- 17	95602-06100	32- 13
	34- 43	90201-101J1	1-13	17804	1- 5	90520-02813	32- 20	93210-26805	44- 4	95602-08200	31- 15
	35- 3	90201-105E8	3- 3	90387-	1-10	90520-08802	32- 26	93210-34802	37- 6	95602-10200	28- 12
	35- 10	90201-12019	33- 28	90401-	1-22	90520-10834	16- 5	93210-54805	7- 6	95602-14200	21- 11
	35- 17	90201-14811	26- 10	10812	44- 7	90560-10292	17- 10	93210-84804	7- 12	95607-06100	28- 17
	35- 23			90438-	19- 28	91312-06025	30- 17	93306-000Y3	7-12	95607-06200	42- 10
	35- 30			90445-	20- 28	91312-06100	306	93306-001X2	5- 6	95612-08630	18- 15
	35- 40		12- 4	09823	32- 6	91312-08016	262	93306-	5-10	95614-12100	6
	35- 43		13- 3	90445-	6-13		31- 17	003YN	4- 5	95702-06500	1- 5
90163-05803	8-22		36- 6	22800	6-15		1-18	93306-	14- 23		41- 14
			32- 7	90450-	6-15		33- 22	004XV	28- 9		
				27806							

NUMERICAL INDEX

PART NO.	REF. NO.	PART NO.	REF. NO.	PART NO.	REF. NO.	PART NO.	REF. NO.	PART NO.	REF. NO.	PART NO.	REF. NO.
95702-08500	9 - 7	97702-40014	19- 5								
95702-12500	36- 5		19 - 10								
95812-06030	8-13		20- 5								
95D02-06012	17- 3		20 - 10								
	17- 9		34 - 16								
	22- 9		34 - 22								
	22 - 11		34 - 29								
	22 - 13		34 - 36								
	22 - 15		35 - 16								
	23 - 25		35 - 22								
	44 - 20		35 - 29								
			35 - 36								
95D02-	242										
06030	19 - 26		38- 5								
95D32-	20 - 26	97702-40612	40- 5								
06010	6-10		40- 6								
95D32-	18 - 16		40- 7								
06016	25 - 10	97702-50016	30- 7								
95D32-	19 - 18		30 - 11								
06020	20 - 18		30 - 19								
95D32-	9 - 9										
06025	9 - 4		39- 5								
95D32-	29 - 16		39- 7								
08040	4		40- 9								
95D32-	1 - 21	97707-	30 - 18								
10035	4-10	50012	25- 8								
95D37-	14 - 28	98502-	32 - 19								
08016	7-14	05010	32 - 25								
95E32-	9	98502-	44- 5								
06010	11- 9	05014	7 - 2								
95E32-	1 - 3	98502-	25- 6								
06016	6 -7-10	05016	33 - 19								
95E32-		98502-	14 - 10								
06020	8 -5	05025	41 - 13								
95E32-	4-19	98502-	16- 6								
06025	5-13	06012	12- 5								
95E32-	10- 7	98507-	13 - 26								
06040	11- 4	06025									
	11 - 13	98512-									
		06012									
95E32-06045	10- 4	98907-									
95E32-06050	5-14	04014									
95E32-06055	11 - 14	99002-									
95E32-06070	10- 3	10600									
95E32-06080	10- 5	99009-									
95E32-06090	7-11	10400									
97002-06016	11 - 19	99009-									
97022-06012	43- 2	20500									
97602-04312	18- 5										
97702-30016	31 - 18										
	39- 3										