

# PARTS CATALOGUE



WM6



DPBMU

## GPR155-A ( D151 ) MALAYSIA

---

GPR155-A  
PARTS CATALOGUE  
©2025 by Yamaha Motor Co., Ltd.  
1st edition, July 2025  
All rights reserved.  
Any reprinting or unauthorized use  
without the written permission of  
Yamaha Motor Co., Ltd.  
is expressly prohibited.  
Printed in Japan.

# FOREWORD

This Parts Catalogue is related to the parts for the model(s) on the cover page. When you are ordering replacement parts, please refer to this Parts Catalogue and quote both part numbers and part names correctly.

1. Modifications or additions which have been made after the issue of the Parts Catalogue will be announced in the Parts News.  
It is advisable that you make the necessary corrections to the Parts Catalogue according to the Parts News.

2. Abbreviations

The following abbreviations are used in this Parts Catalogue.

“UR” Use specified parts number.

“UN” Use as many as needed.

“AP” Alternate Parts

“LM” Locally Made (Parts need to be ordered locally)

“F#” Frame No. (Applicable machine No.)

“O/S” Over Size

3. The number of components for assembly

- Parts, which are to be supplied in an assembly, are listed with a dot (.) in front of the part name as shown below.
- The numeral appearing to the right of each component part indicates the quantity of parts for each assembly unit.

PART NO.	DESCRIPTION	Q'TY	REMARKS
2F5-83310-60	FRONT FLASHER LIGHT ASSY	2	
115-83311-60	.BULB (6V-18W)	1	

4. Applicable colours of graphics are represented in the “REMARKS” as shown below.

PART NO.	DESCRIPTION	Q'TY	REMARKS
2N4-24110-00-X5	FUEL TANK COMP.	2	MXR
3J1-24240-10	.GRAPHIC, FUEL TANK	1	FOR MXR

5. Note that the illustrations for reference in finding parts numbers are not to be used for assembling. When assembling, please use the applicable service manual.

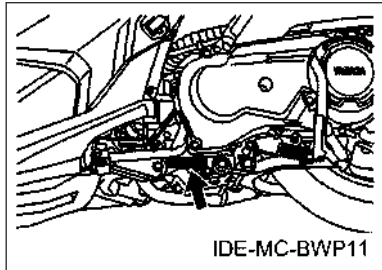
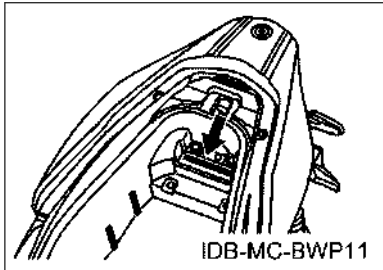
6. The asterisk (\*) before a reference number indicates modified items after the first edition.

# FOREWORD

7. Applicable Serial No.

Frame Serial No.

Engine Serial No.



8. Applicable Colour Code (The (\*) mark shows Model colour.)

Abbreviation	Colour Name	Colour Code
DPBMU(*)	DARK PURPLISH BLUE METALLIC U	0996
MBL2	MAT BLACK 2	0582
RYC1	REDDISH YELLOW COCKTAIL 1	0251
S3	SILVER 3	0791
SMX	BLACK METALLIC X	0903
VVM2	VIVID VIOLET METALLIC 2	1942
WM6(*)	WHITE METALLIC 6	1124
YB	YAMAHA BLACK	0033

9. Applicable Starting Serial No.

Frame Serial No.

Serial No.	Name Of Q'ty Column	Model Code

Engine Serial No.

Serial No.	Name Of Q'ty Column	Model Code

# CONTENTS

## ENGINE

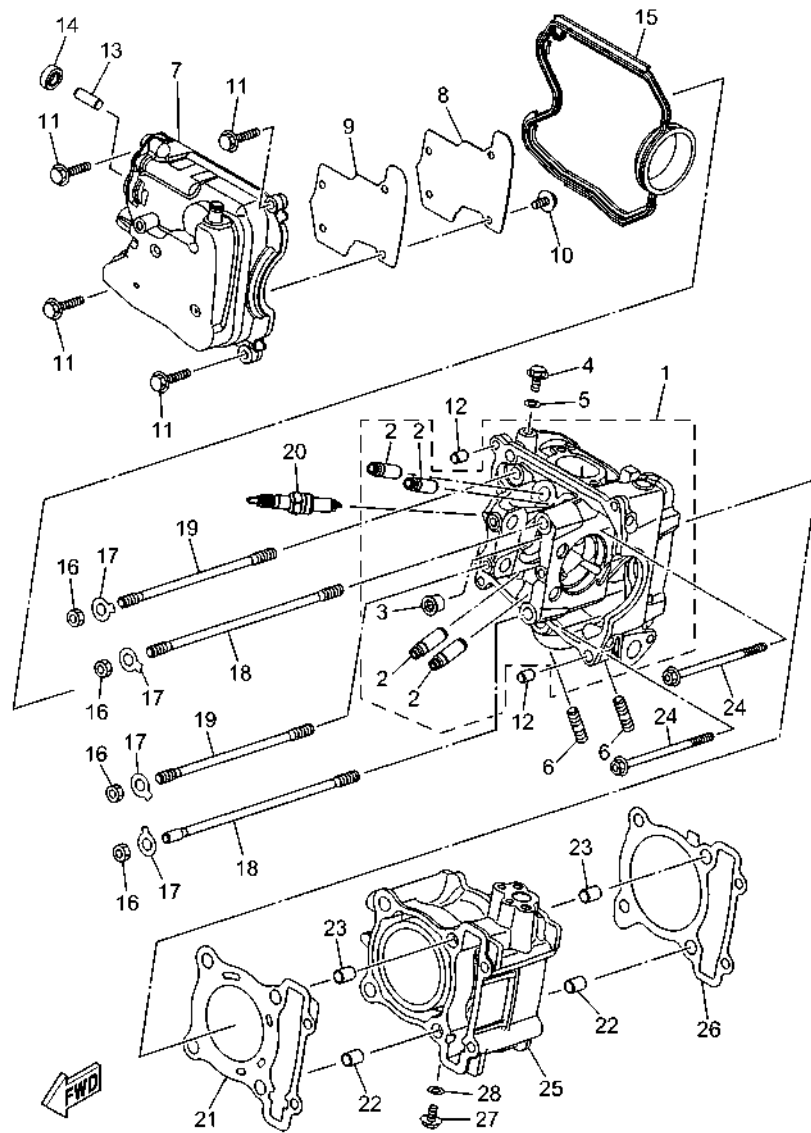
CYLINDER.....	1
CRANKSHAFT & PISTON.....	3
VALVE.....	4
CAMSHAFT & CHAIN.....	5
WATER PUMP.....	6
RADIATOR & HOSE.....	7
OIL PUMP.....	9
INTAKE.....	10
EXHAUST.....	12
CRANKCASE.....	13
CRANKCASE COVER 1.....	15
CLUTCH.....	16
TRANSMISSION.....	18

## CHASSIS

FRAME.....	19
FENDER.....	20
SIDE COVER.....	21
REAR ARM & SUSPENSION.....	24
STEERING.....	26
FUEL TANK.....	28
SEAT.....	29
FRONT WHEEL.....	31
FRONT BRAKE CALIPER.....	32
REAR WHEEL.....	33
REAR BRAKE CALIPER.....	34
STEERING HANDLE & CABLE.....	35
FRONT MASTER CYLINDER.....	37
STAND & FOOTREST.....	39
LEG SHIELD.....	41
GENERATOR.....	44
FLASHER LIGHT.....	45
METER.....	46
HEADLIGHT.....	47
TAILLIGHT.....	48
HANDLE SWITCH & LEVER.....	49
ELECTRICAL 1.....	50
ELECTRICAL 2.....	52
ELECTRICAL 3.....	53

## INDEX

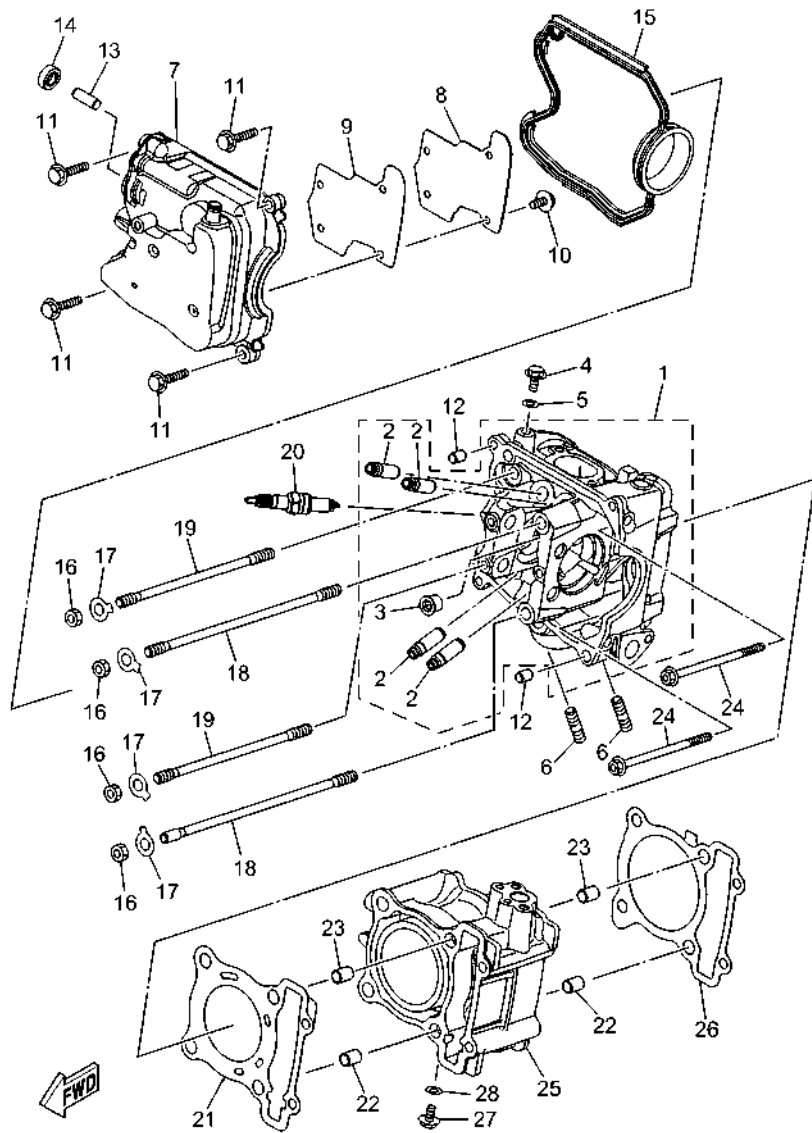
NUMERICAL INDEX.....	54
----------------------	----



D121422-0010

FIG. 1 CYLINDER

REF. NO.	PART NO.	DESCRIPTION	D151				REMARKS
1	D13-E1102-00	CYLINDER HEAD ASSY	1				
2	2DP-E1133-10	.GUIDE, VALVE 1	4				
3	90340-12813	.PLUG, STRAIGHT SCREW	1				
4	95E32-06010	BOLT, FLANGE DEEP RECESS	1				
5	90430-06803	GASKET	1				
6	95612-08618	BOLT, STUD	2				
7	D11-E1191-00	COVER, CYLINDER HEAD 1	1				
8	B63-E1165-00	PLATE, BREATHER	1				
9	2DP-E1169-00	GASKET, BREATHER COVER	1				
10	90149-05801	SCREW	4				
11	95E32-06030	BOLT, FLANGE DEEP RECESS	4				
12	99530-08012	PIN, DOWEL	2				
13	B63-E132G-00	ROD 1	1				
14	93102-08800	OIL SEAL	1				
15	B3F-E1193-00	GASKET, HEAD COVER 1	1				
16	90170-08811	NUT	4				
17	BLS-E113F-00	PLATE 3	4				
18	BB8-E1391-00	BOLT, STUD 1	2				
19	BB8-E1392-00	BOLT, STUD 2	2				
20	94700-00415	PLUG, SPARK (NGK CPR8EA)	1				
21	2DP-E1181-00	GASKET, CYLINDER HEAD 1	1				
22	99530-10114	PIN, DOWEL	2				
23	99530-10114	PIN, DOWEL	2				
24	90110-06894	BOLT, HEXAGON SOCKET HEAD	2				
25	BVY-E1311-00	CYLINDER 1	1				
26	BPA-E1351-00	GASKET, CYLINDER	1				
27	95E32-06010	BOLT, FLANGE DEEP RECESS	1				

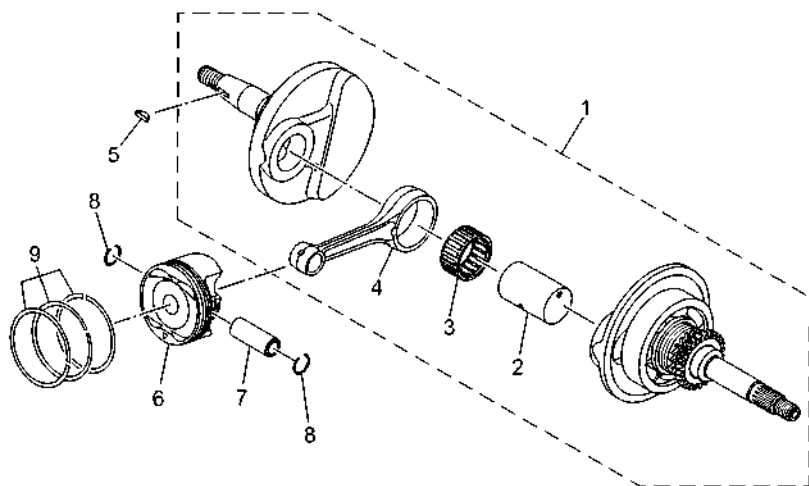


D121422-0010

FIG. 1 CYLINDER

REF. NO.	PART NO.	DESCRIPTION	D151				REMARKS
28	90430-06803	GASKET	1				

**FIG. 2 CRANKSHAFT & PISTON**

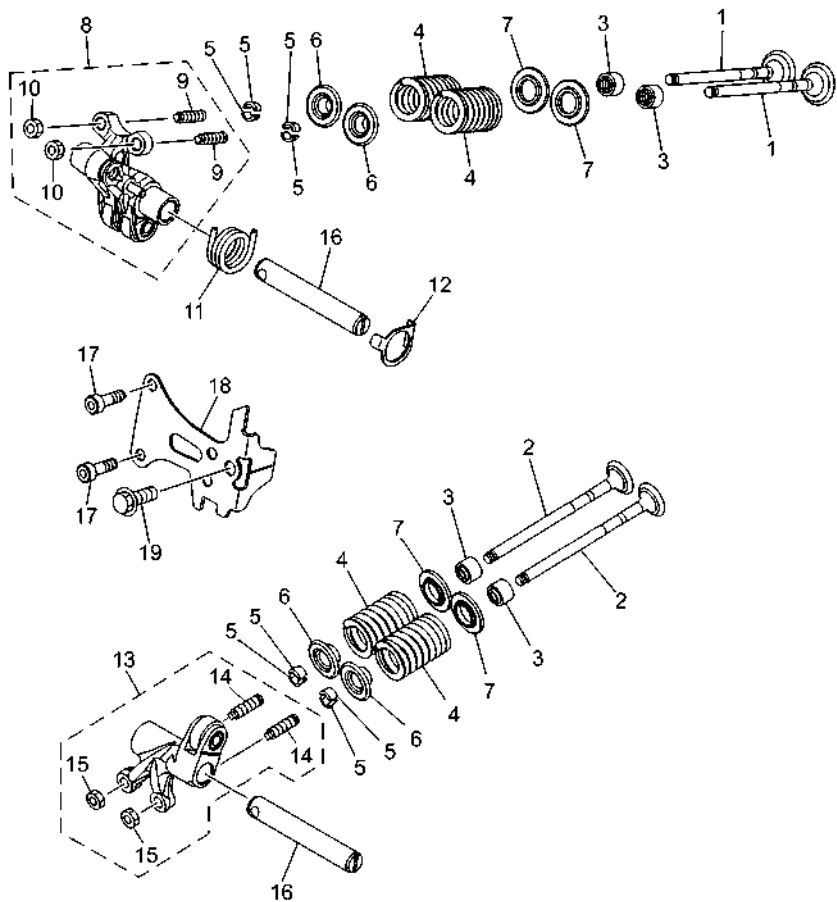


REF. NO.	PART NO.	DESCRIPTION	D151				REMARKS
1	BVY-E1400-00	CRANKSHAFT ASSY	1				
2	B63-E1681-00	.PIN, CRANK 1	1				
3	93310-528YK	.BEARING	1				
4	B63-E1651-00	.ROD, CONNECTING	1				
5	90280-03017	KEY, WOODRUFF	1				
6	BPA-E1631-00	PISTON (STD)	1				
7	5YP-E1633-00	PIN, PISTON	1				
8	93450-16115	CIRCLIP	2				
9	BLS-E1603-00	PISTON RING SET (STD)	1				

  
BPN1460-Z020



**FIG. 3 VALVE**

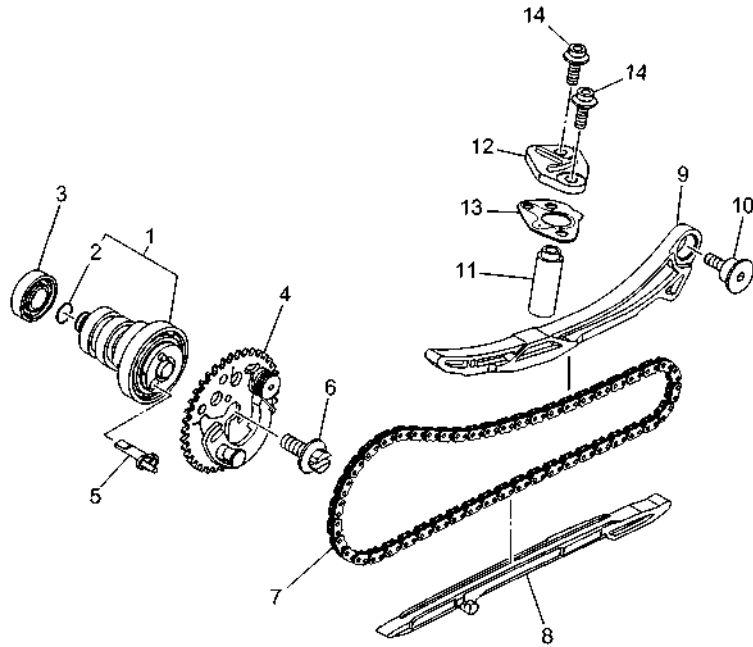


BPN1460-Z030

REF. NO.	PART NO.	DESCRIPTION	D151				REMARKS
1	B5V-E2111-01	VALVE, INTAKE	2				
2	B63-E2121-11	VALVE, EXHAUST	2				
3	B63-E2119-00	SEAL, VALVE STEM	4				
4	BB8-E2113-01	SPRING, VALVE INNER	4				
5	5TL-E2118-00	LOCK, VALVE SPRING RETAINER	8				
6	B63-E2117-01	RETAINER, VALVE SPRING	4				
7	55P-E2126-00	SEAT, VALVE SPRING 2	4				
8	B63-E2150-02	VALVE ROCKER ARM ASSY	1				
9	33S-E2159-01	.SCREW, VALVE ADJUSTING	2				
10	90170-05803	.NUT	2				
11	BB8-E2226-00	SPRING, COIL	1				
12	B63-E2279-00	PLATE	1				
13	B6H-E2160-02	VALVE ROCKER ARM ASSY 2	1				
14	33S-E2159-01	.SCREW, VALVE ADJUSTING	2				
15	90170-05803	.NUT	2				
16	B5V-E2156-00	SHAFT, ROCKER 2	2				
17	91312-05016	BOLT, HEXAGON SOCKET HEAD	2				
18	BVY-E111F-00	PLATE	1				
19	95E32-06014	BOLT, FLANGE DEEP RECESS	1				



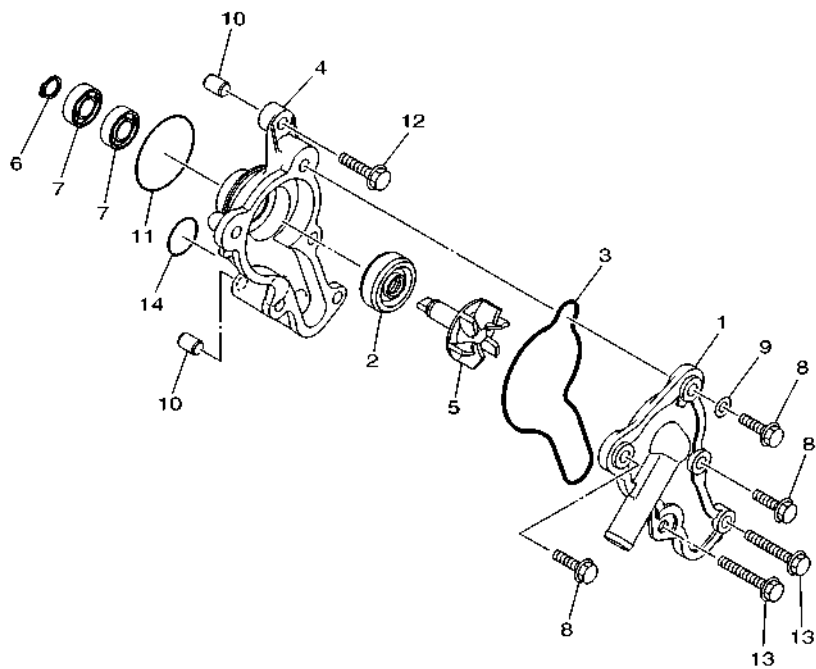
BPN1460-Z040



**FIG. 4 CAMSHAFT & CHAIN**

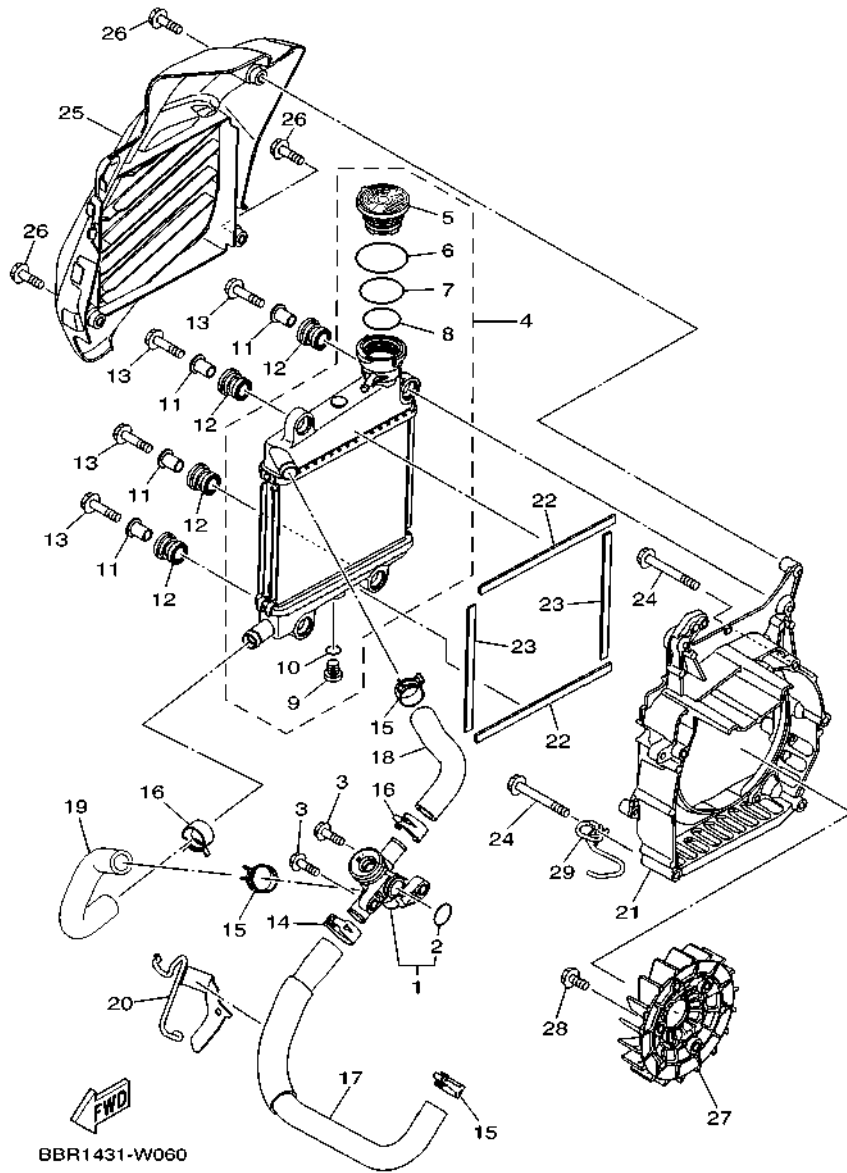
REF. NO.	PART NO.	DESCRIPTION	D151				REMARKS
1	BVY-E2170-10	CAMSHAFT ASSY 1	1				
2	93210-09807	.O-RING	1				
3	93306-001X3	BEARING	1				
4	BPN-E2280-00	DECOMPRESSION ASSY	1				
5	BPN-E2288-00	CAM, DECOMPRESSION	1				
6	B63-E2157-00	BOLT	1				
7	94568-A8096	CHAIN(DID SCR-0404 SV)	1				
8	BBN-E2231-00	GUIDE, STOPPER 1	1				
9	BLS-E2241-00	GUIDE, STOPPER 2	1				
10	BBN-E2228-00	BOLT	1				
11	BLS-E2210-00	TENSIONER ASSY, CAM CHAIN	1				
12	BLS-E2199-00	FLANGE	1				
13	BLS-E2213-00	GASKET, TENSIONER CASE	1				
14	90110-06440	BOLT, HEXAGON SOCKET HEAD	2				

**FIG. 5 WATER PUMP**



REF. NO.	PART NO.	DESCRIPTION	D151				REMARKS
1	B6H-E2422-00	COVER, HOUSING	1				
2	B6H-E2223-00	SEAL	1				
3	BBN-E2439-00	O-RING	1				
4	B5V-E1185-00	COVER, CYLINDER HEAD SIDE 3	1				
5	B6H-E2450-00	IMPELLER SHAFT ASSY	1				
6	99009-08400	CIRCLIP	1				
7	93300-608X0	BEARING	2				
8	95027-06020	BOLT, FLANGE	3				
9	90430-06803	GASKET	1				
10	99530-08012	PIN, DOWEL	2				
11	93210-39803	O-RING	1				
12	95E32-06025	BOLT, FLANGE DEEP RECESS	1				
13	95E32-06045	BOLT, FLANGE DEEP RECESS	2				
14	93210-19809	O-RING	1				

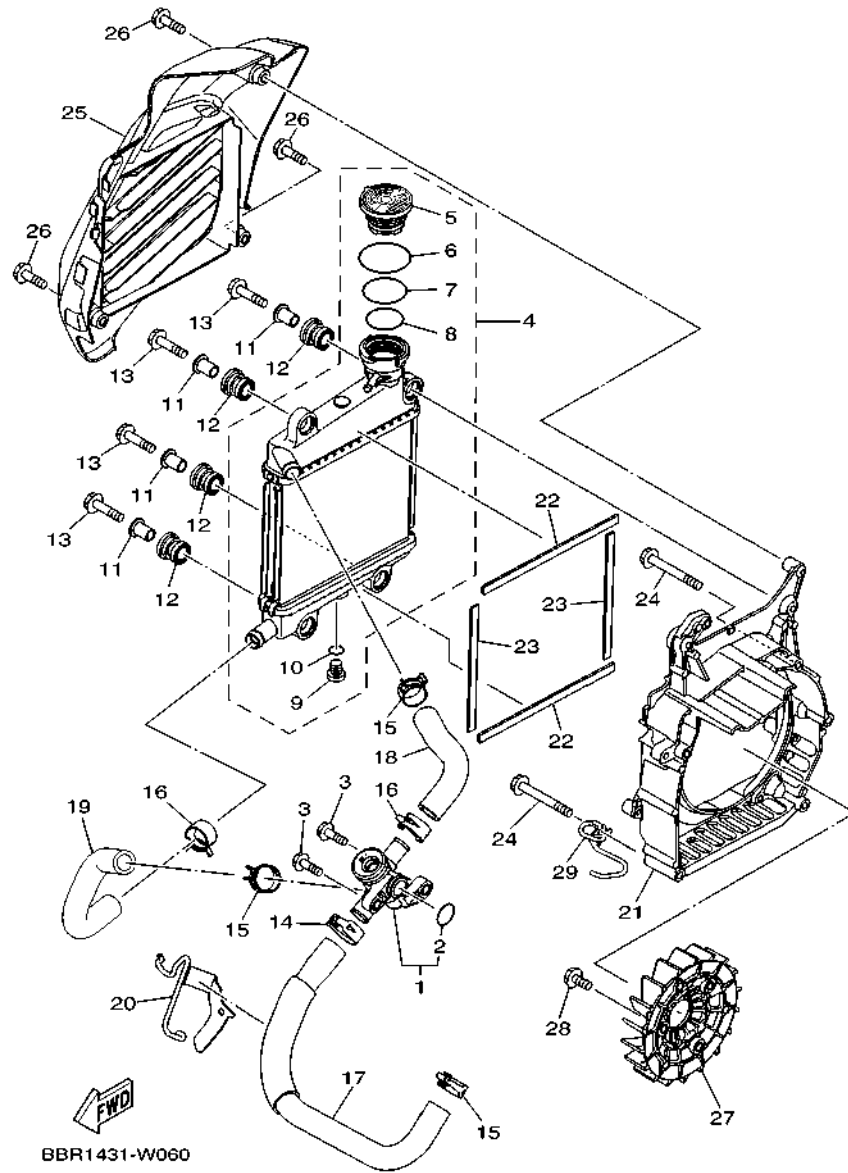
  
 B6H1460-U050



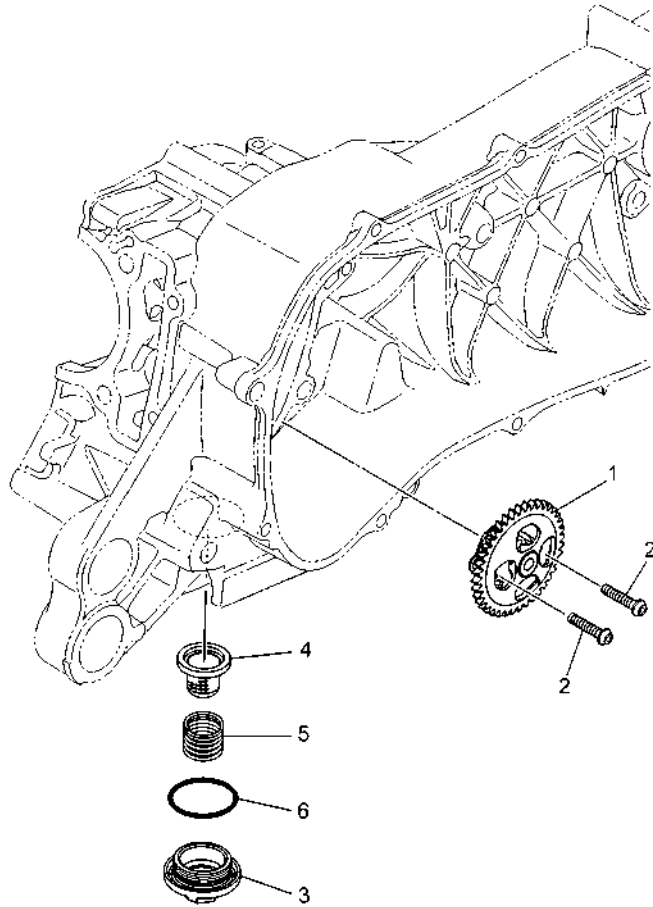
**FIG. 6 RADIATOR & HOSE**

REF. NO.	PART NO.	DESCRIPTION	D151				REMARKS
1	2DP-E2410-00	THERMOSTAT ASSY	1				
2	52S-12439-00	.O-RING	1				
3	95E32-06020	BOLT, FLANGE DEEP RECESS	2				
4	B6H-E240A-01	RADIATOR ASSY	1				
5	B65-E2462-02	.CAP, RADIATOR	1				
6	B63-E22A2-00	.O-RING	1				
7	B63-E2439-00	.O-RING	1				
8	B63-E2843-00	.O-RING	1				
9	5ST-E2615-00	.COCK, DRAIN	1				
10	5ST-E2843-00	.O-RING	1				
11	90387-08823	COLLAR	4				
12	90480-14833	GROMMET	4				
13	95D32-06030	BOLT, FLANGE DEEP RECESS	4				
14	90467-20806	CLIP	1				
15	90467-19803	CLIP	3				
16	90467-19803	CLIP	2				
17	BVY-E2481-00	PIPE 1	1				
18	B6H-E2482-00	PIPE 2	1				
19	B6H-E2483-00	PIPE 3	1				
20	BBN-E2491-00	CLAMP 1	1				
21	B6H-E2621-01	CASE, FAN	1				
22	90520-10853	DAMPER, PLATE	2				
23	90520-10855	DAMPER, PLATE	2				
24	95E32-06050	BOLT, FLANGE DEEP RECESS	5				
25	BBN-E2467-00	COVER, RADIATOR	1				
26	95E32-06020	BOLT, FLANGE DEEP RECESS	3				
27	B63-E2611-00	FAN	1				

FIG. 6 RADIATOR & HOSE

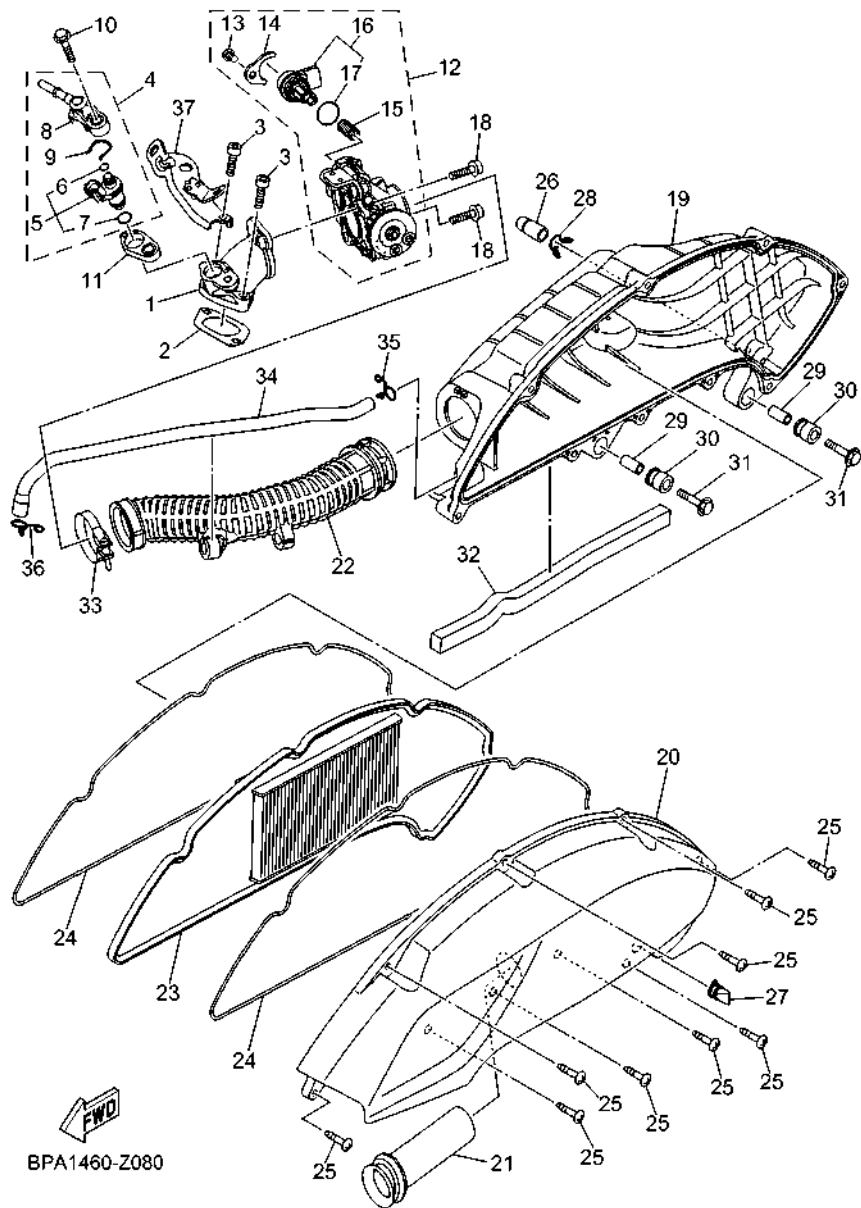


REF. NO.	PART NO.	DESCRIPTION	D151	REMARKS
28	95D32-06016	BOLT, FLANGE DEEP RECESS	3	
29	BWR-E8179-00	GUIDE	1	

**FIG. 7 OIL PUMP**

REF. NO.	PART NO.	DESCRIPTION	D151			REMARKS
1	BBN-E3300-00	OIL PUMP ASSY	1			
2	92012-05025	BOLT, BUTTON HEAD	2			
3	2BM-E5351-00	PLUG, DRAIN 1	1			
4	2BM-E3411-00	STRAINER, OIL	1			
5	90501-16004	SPRING, COMPRESSION	1			
6	93210-29800	O-RING	1			
<hr/>						
<hr/>						
<hr/>						
<hr/>						
<hr/>						
<hr/>						
<hr/>						
<hr/>						
<hr/>						
<hr/>						
<hr/>						

  
BPN1460-Z070



**FIG. 8 INTAKE**

REF. NO.	PART NO.	DESCRIPTION	D151	REMARKS
1	B6H-E3585-00	MANIFOLD	1	
2	BPA-E4199-00	GASKET	1	
3	91332-06025	BOLT	2	
4	2PV-E3770-00	INJECTOR ASSY	1	
5	2PV-E3761-00	.INJECTOR	1	
6	54P-E4147-00	.O-RING	1	
7	5CA-E4147-00	.O-RING	1	
8	54P-E3938-00	.PIPE	1	
9	54P-E4137-00	.CLIP	1	
10	95D32-06030	BOLT, FLANGE DEEP RECESS	1	
11	2DP-E3556-01	GASKET, MANIFOLD	1	
12	B65-E3750-12	THROTTLE BODY ASSY	1	
13	98502-06012	.SCREW, PAN HEAD	1	
14	54P-E4243-00	.PLATE	1	
15	54P-E4335-00	.SPRING, PLUNGER	1	
16	B63-H5801-02	.STEPPING MOTOR	1	
17	54P-E416A-00	.O-RING	1	
18	90110-06846	BOLT, HEXAGON SOCKET HEAD	2	
19	B6H-E4411-10	CASE, AIR CLEANER 1	1	
20	B6H-E4412-10	CAP, CLEANER CASE 1	1	
21	B6H-E4437-00	DUCT	1	
22	B6H-E4453-00	JOINT, AIR CLEANER 1	1	
23	B6H-E4451-00	ELEMENT, AIR CLEANER	1	
24	B6H-E4452-10	SEAL	2	
25	97707-50025	SCREW, TAPPING	9	
26	5TL-E443E-00	PIPE, DRAIN	1	
27	B5D-E443G-00	PIPE, DRAIN 2	1	

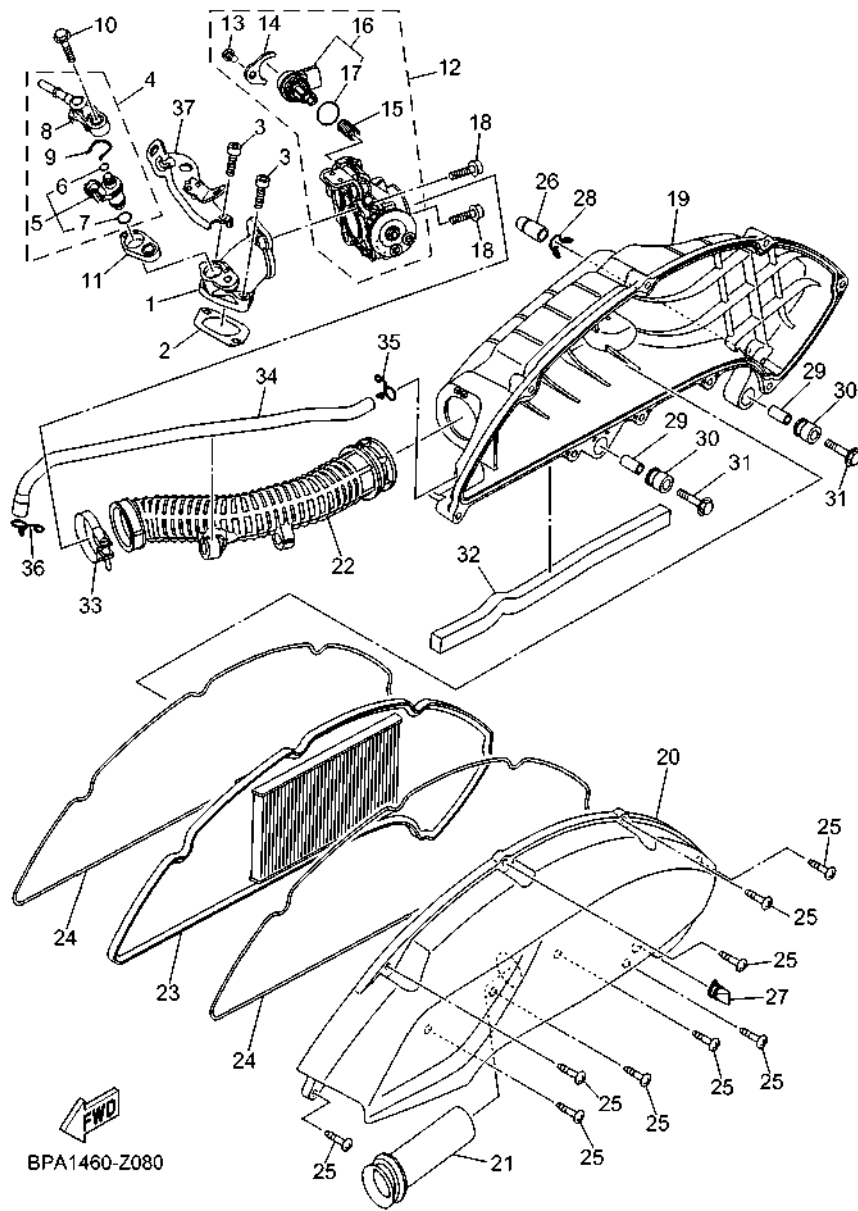
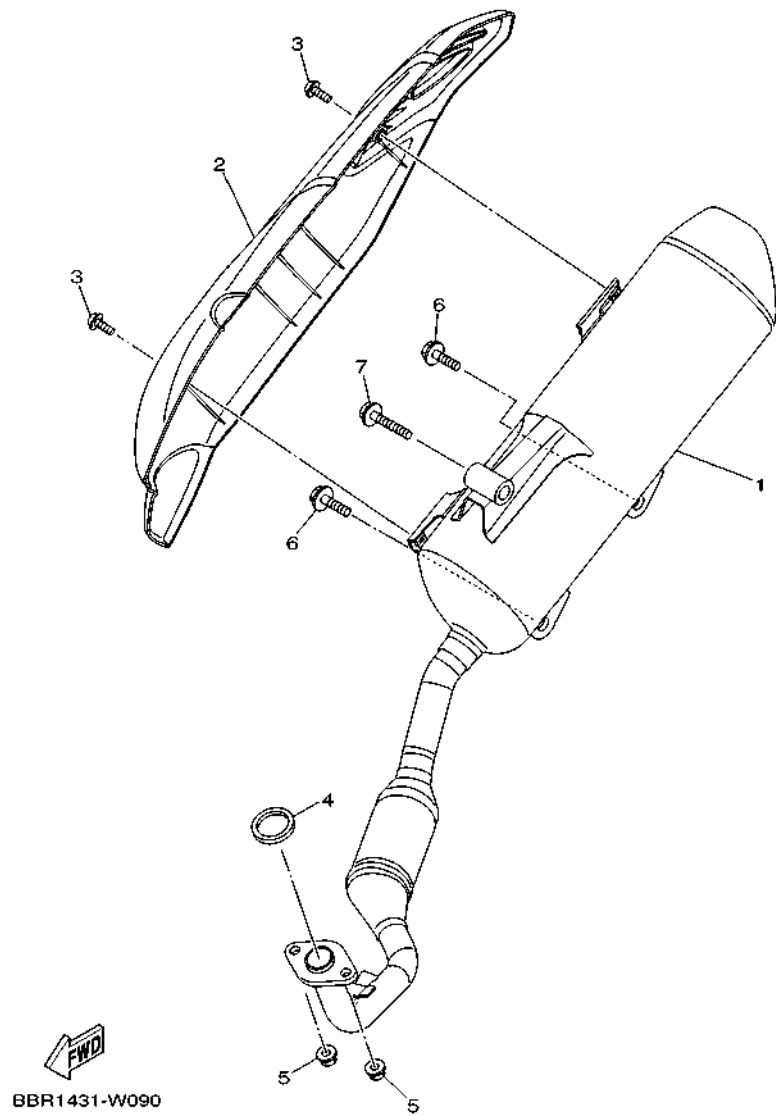


FIG. 8 INTAKE

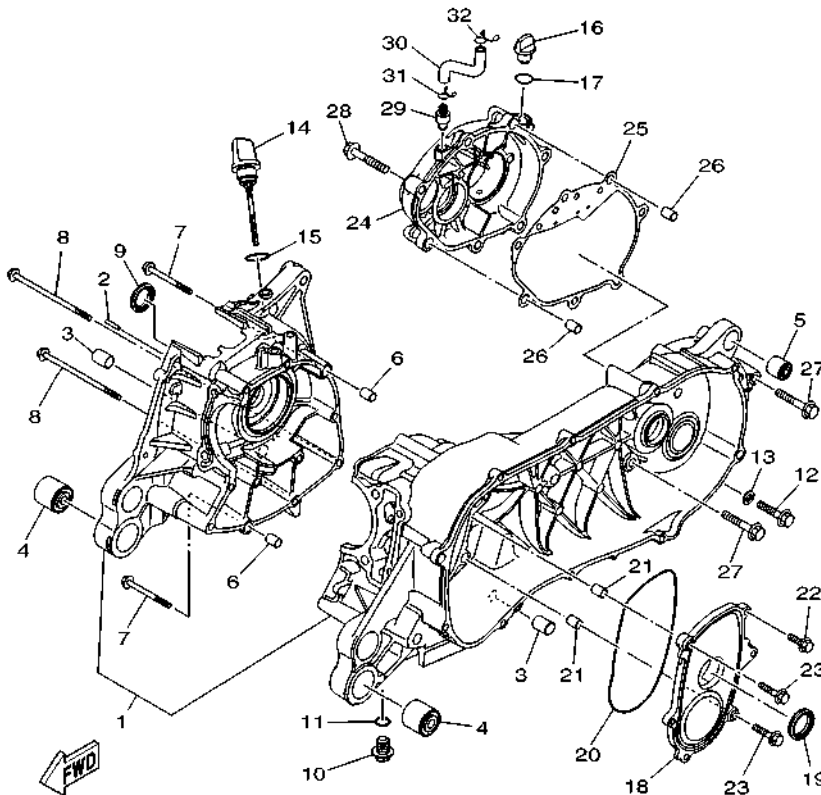
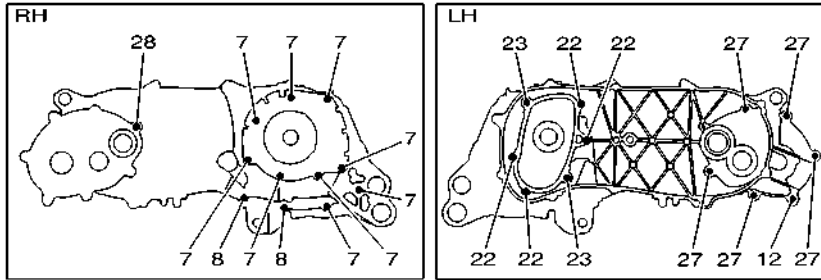
REF. NO.	PART NO.	DESCRIPTION	D151	REMARKS
28	90467-12809	CLIP	1	
29	B74-E4449-00	COLLAR	2	
30	B6H-E4435-00	GROMMET	2	
31	95D32-06030	BOLT, FLANGE DEEP RECESS	2	
32	90520-15816	DAMPER, PLATE	1	
33	90450-43805	HOSE CLAMP ASSY	1	
34	BBN-E1166-00	PIPE, BREATHER 1	1	
35	90467-11825	CLIP	1	
36	90467-12052	CLIP	1	
37	D11-E4146-00	PLATE	1	



**FIG. 9 EXHAUST**



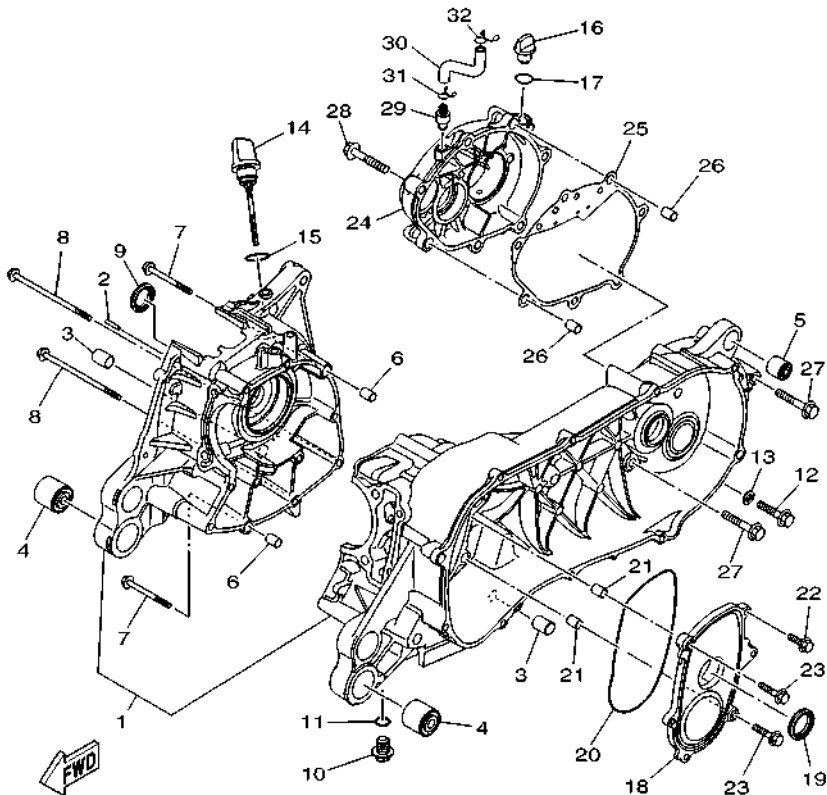
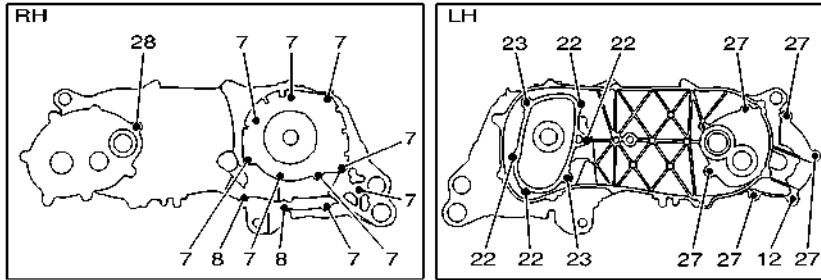
REF. NO.	PART NO.	DESCRIPTION	D151				REMARKS
1	D15-E4711-00	MUFFLER 1	1				
2	B6H-E4718-00	PROTECTOR, MUFFLER 1	1				
3	90111-06860	BOLT, HEXAGON SOCKET BUTTON	2				
4	B63-E4613-00	GASKET, EXHAUST PIPE	1				
5	95702-08500	NUT, FLANGE	2				
6	95D32-10045	BOLT, FLANGE DEEP RECESS	2				
7	95D32-10060	BOLT, FLANGE DEEP RECESS	1				



B6H1460-U100

FIG. 10 CRANKCASE

REF. NO.	PART NO.	DESCRIPTION	D151	REMARKS
1	D12-E5150-00	CRANKCASE ASSY	1	
2	99480-03012	PIN	1	
3	1DB-F7121-00	BUSH	2	
4	90388-10808	DAMPER	2	
5	4D1-F2216-00	BUSH, REAR SHOCK ABSORBER	1	
6	99530-10114	PIN, DOWEL	2	
7	95E32-06060	BOLT, FLANGE DEEP RECESS	9	
8	95E32-06110	BOLT, FLANGE DEEP RECESS	2	
9	93102-22829	OIL SEAL	1	
10	90340-12816	BOLT, STRAIGHT SCREW	1	
11	90430-12803	GASKET	1	
12	95D32-08035	BOLT, FLANGE DEEP RECESS	1	
13	90430-08804	GASKET	1	
14	B63-E5362-00	PLUG, OIL LEVEL	1	
15	5P1-E3769-00	O-RING	1	
16	5VD-E5363-00	PLUG, OIL	1	
17	93210-14814	O-RING	1	
18	B63-E5423-01	COVER 2	1	
19	93102-24802	OIL SEAL	1	
20	93211-28800	O-RING	1	
21	99530-10114	PIN, DOWEL	2	
22	95E32-06020	BOLT, FLANGE DEEP RECESS	4	
23	95E32-06030	BOLT, FLANGE DEEP RECESS	2	
24	D12-E5421-00	COVER, CRANKCASE 2	1	
25	BPA-E5461-00	GASKET, CRANKCASE COVER 2	1	
26	99530-10114	PIN, DOWEL	2	
27	95E32-08045	BOLT, FLANGE DEEP RECESS	5	

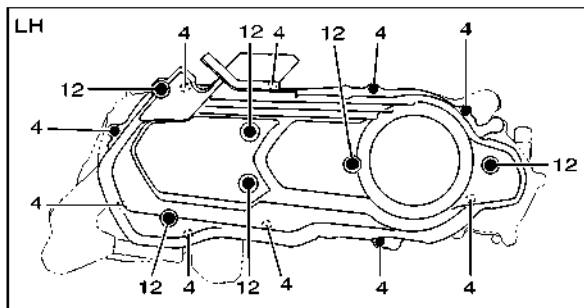
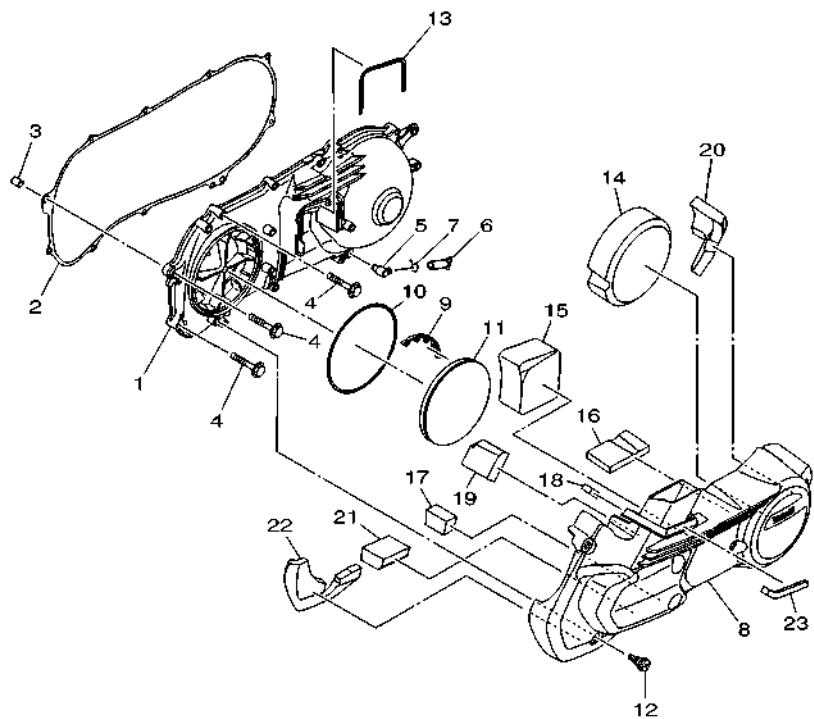


B6H1460-U100

FIG. 10 CRANKCASE

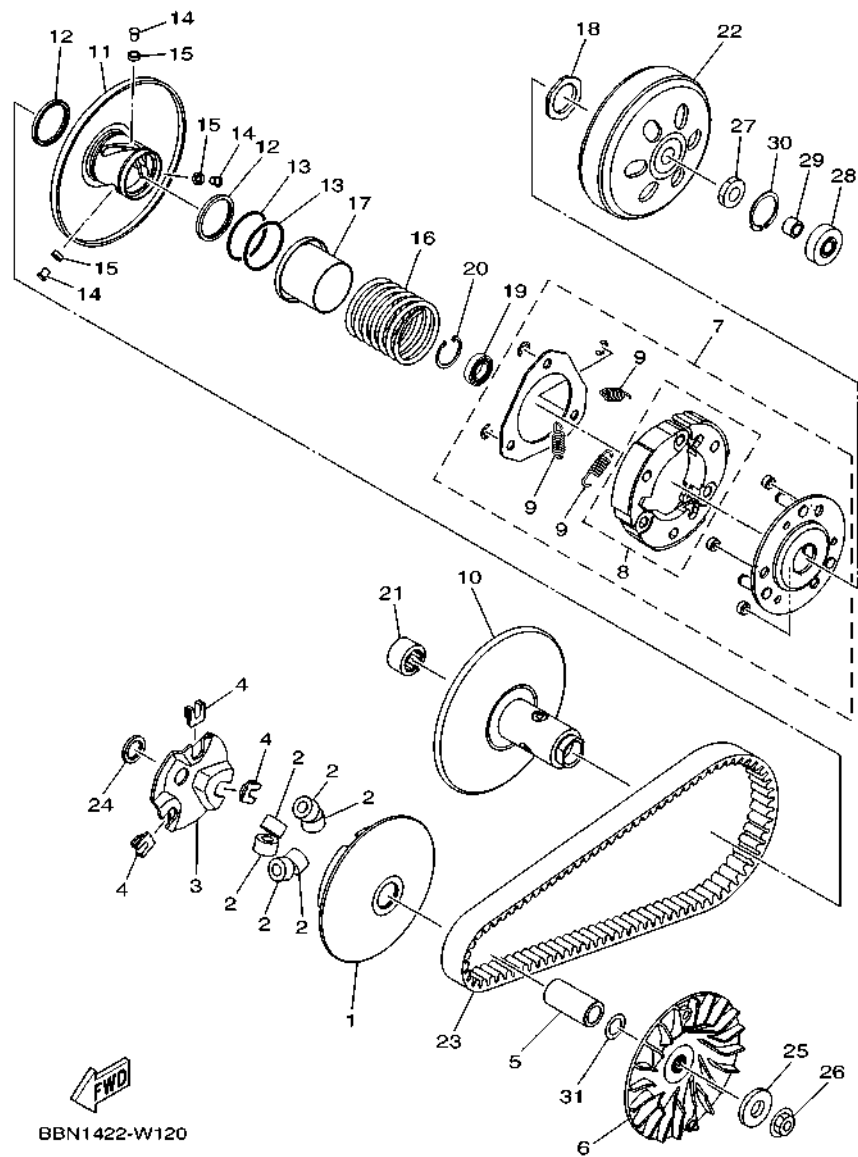
REF. NO.	PART NO.	DESCRIPTION	D151	REMARKS
28	95E32-08035	BOLT, FLANGE DEEP RECESS	1	
29	B6H-E5371-00	BREATHER	1	
30	BBN-E5373-00	PIPE, BREATHER	1	
31	90467-10008	CLIP	1	
32	90467-11825	CLIP	1	
-----				
-----				
-----				
-----				
-----				
-----				
-----				
-----				

**FIG. 11 CRANKCASE COVER 1**



B6H1460-U110

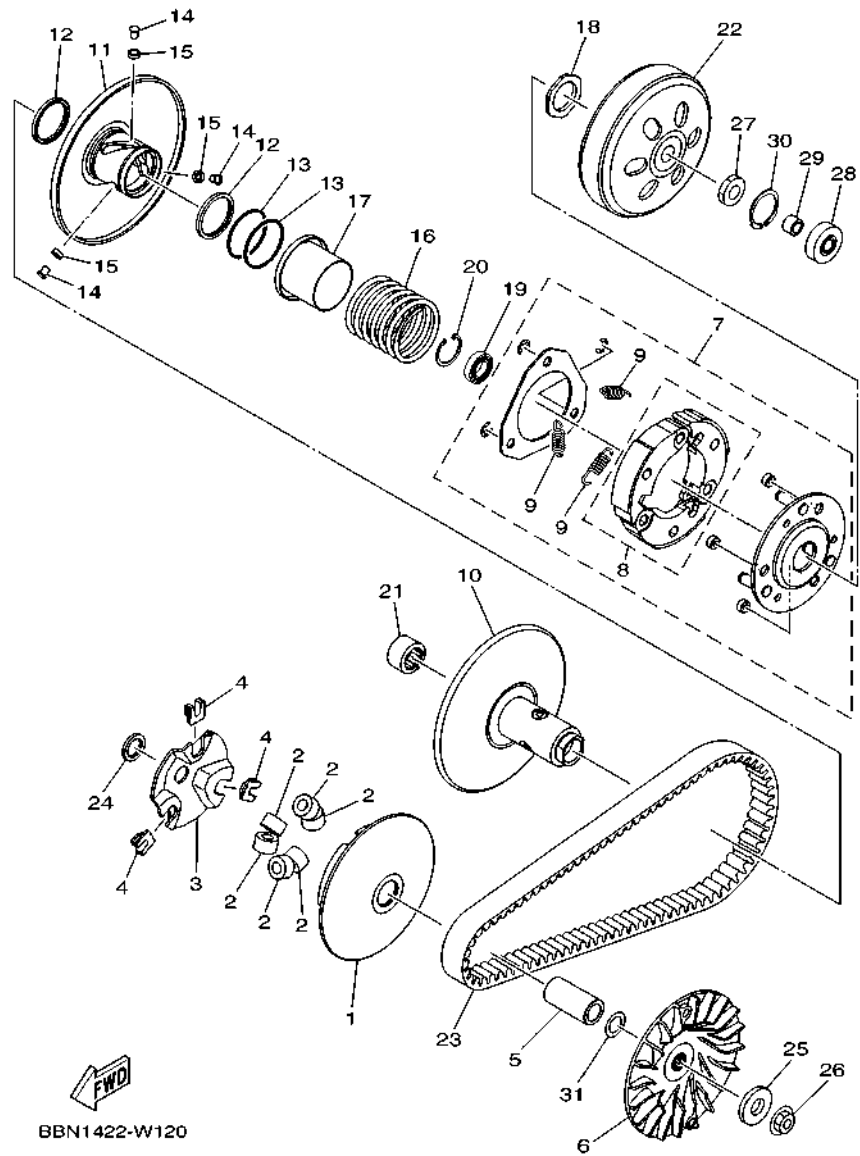
REF. NO.	PART NO.	DESCRIPTION	D151				REMARKS
1	BBN-E5411-01	COVER, CRANKCASE 1	1				
2	BPA-E5451-00	GASKET, CRANKCASE COVER 1	1				
3	99530-10114	PIN, DOWEL	1				
4	95E32-06035	BOLT, FLANGE DEEP RECESS	10				
5	2BM-E5371-10	BREATHER	1				
6	4ST-E443E-00	PIPE, DRAIN	1				
7	90467-11106	CLIP	1				
8	BBN-E5431-00	COVER, CRANKCASE 3	1				
9	B63-E5495-00	RUBBER SEAL	1				
10	B63-E5472-00	SEAL, AIR DUCT	1				
11	BB8-E5407-00	ELEMENT 1	1				
12	B63-E5481-00	BOLT 1	6				
13	B63-E5474-00	SEAL, AIR DUCT	1				
14	BBN-E5316-00	DAMPER 1	1				
15	BBN-E5326-00	DAMPER 2	1				
16	90520-10856	DAMPER, PLATE	1				
17	90520-40801	DAMPER, PLATE	1				
18	90520-10851	DAMPER, PLATE	1				
19	90520-50801	DAMPER, PLATE	1				
20	BBN-E533C-00	DAMPER 7	1				
21	90520-40800	DAMPER, PLATE	1				
22	BBN-E533E-00	DAMPER 9	1				
23	90520-10855	DAMPER, PLATE	1				



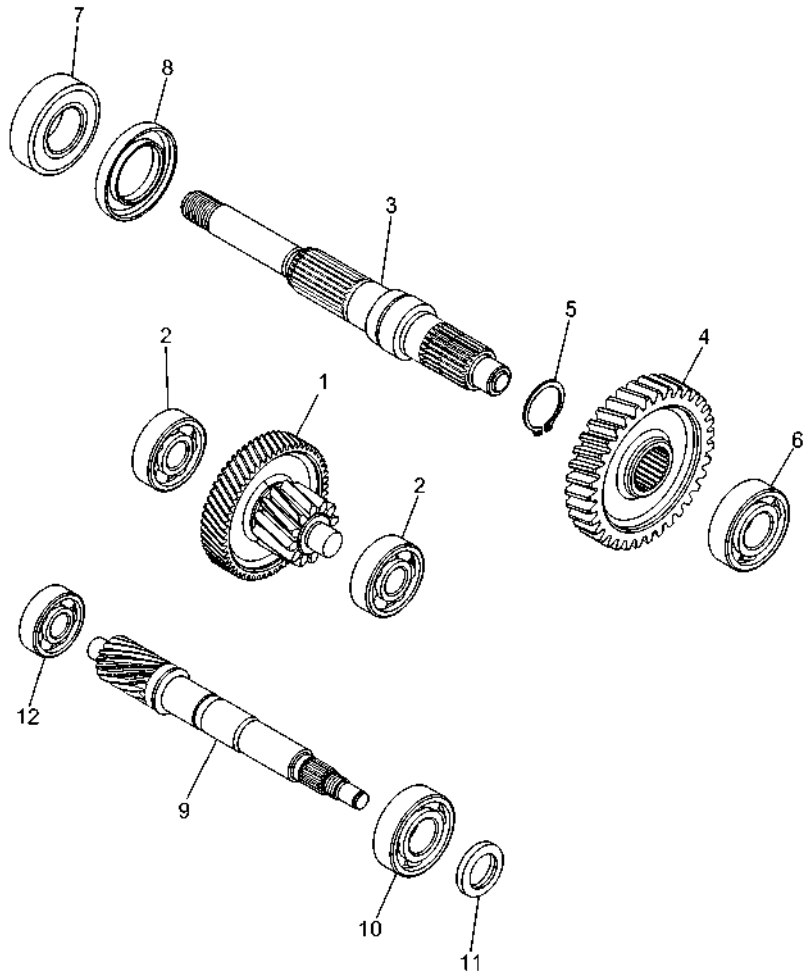
**FIG. 12 CLUTCH**

REF. NO.	PART NO.	DESCRIPTION	D151				REMARKS
1	BVY-E7620-00	PRIMARY SLIDING SHEAVE COMP.	1				
2	B63-E7632-00	WEIGHT	6				
3	B63-E7623-20	CAM	1				
4	44S-E7653-00	SLIDER	3				
5	BBN-E7674-00	COLLAR, GUIDE	1				
6	B63-E7611-00	SHEAVE, PRIMARY FIXED	1				
7	BVY-E6620-00	CLUTCH CARRIER ASSY	1				
8	B63-WE662-00	.CLUTCH WEIGHT SHOE SET	1				
9	B63-E6626-00	.SPRING, CLUTCH WEIGHT 1	3				
10	BVY-E7660-00	SECONDARY FIXED SHEAVE COMP.	1				
11	BVY-E7670-00	SECONDARY SLIDING SHEAVE	1				
12	B63-E7465-00	SEAL	2				
13	B63-E7465-10	SEAL	2				
14	B63-E7664-00	PIN, GUIDE	3				
15	B63-E7674-10	COLLAR, GUIDE	3				
16	BVY-E7683-00	SPRING, SECONDARY	1				
17	B63-E7684-00	SEAT, SECONDARY SPRING	1				
18	B63-E7668-00	NUT	1				
19	BVY-E7678-00	BEARING	1				
20	B63-E5744-00	CIRCLIP	1				
21	B63-E7678-10	BEARING	1				
22	BVY-E6611-00	CLUTCH HOUSING COMP.	1				
23	B63-E7641-00	V-BELT	1				
24	90201-16819	WASHER, PLATE	1				
25	90201-12837	WASHER, PLATE	1				
26	90179-12019	NUT	1				
27	90170-12802	NUT	1				

FIG. 12 CLUTCH



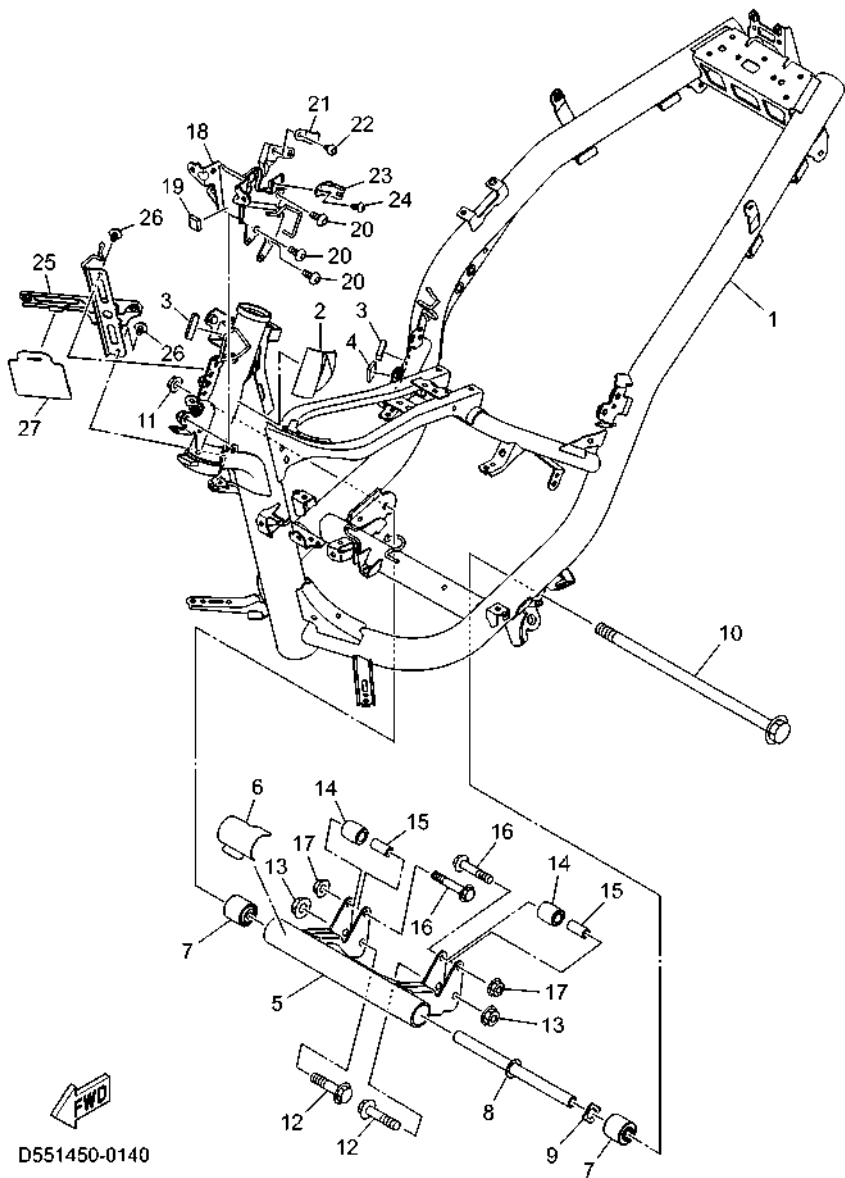
REF. NO.	PART NO.	DESCRIPTION	D151				REMARKS
28	93306-252YB	BEARING	1				
29	90380-10800	BUSH, SOLID	1				
30	99009-35700	CIRCLIP	1				
31	90201-15828	WASHER, PLATE	1				



  
 2DP1460-P140

**FIG. 13 TRANSMISSION**

REF. NO.	PART NO.	DESCRIPTION	D151				REMARKS
1	B63-E7410-00	MAIN AXLE COMP. (13T/56T)	1				
2	93306-302YP	BEARING	2				
3	B63-E7421-00	AXLE, DRIVE	1				
4	B63-E7211-00	GEAR, 1ST WHEEL (40T)	1				
5	99009-25400	CIRCLIP	1				
6	93306-303YT	BEARING	1				
7	93306-255X5	BEARING	1				
8	93102-32807	OIL SEAL	1				
9	B63-E6111-00	GEAR, PRIMARY DRIVE (16T)	1				
10	93306-254Y2	BEARING	1				
11	93102-20815	OIL SEAL	1				
12	93306-351Y5	BEARING	1				



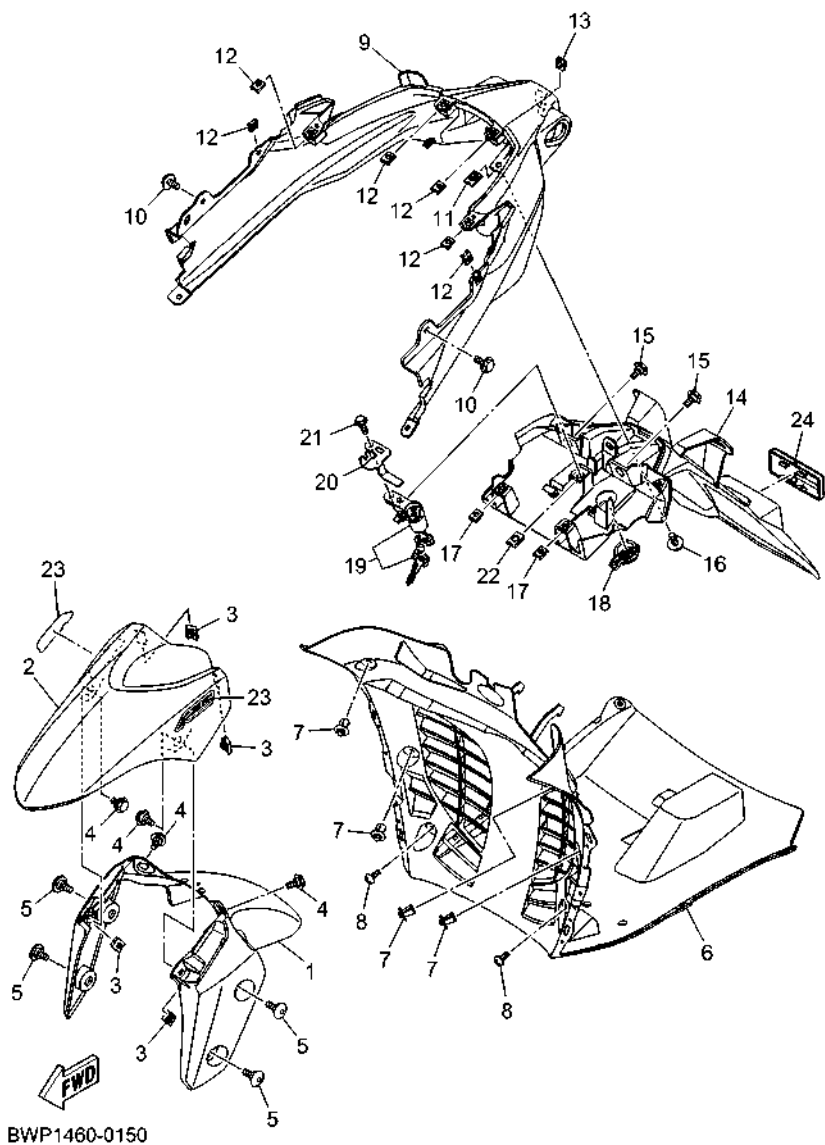
D551450-0140

FIG. 14 FRAME

REF. NO.	PART NO.	DESCRIPTION	D151	REMARKS
1	D14-F1110-00	FRAME COMP.	1	
2	90520-02829	DAMPER, PLATE	1	
3	90520-08803	DAMPER, PLATE	2	
4	90520-06801	DAMPER, PLATE	1	
5	BLS-F1410-00	ENGINE BRACKET COMP.	1	
6	B65-F117G-00	PROTECTOR	1	
7	90388-10818	DAMPER	2	
8	90387-10857	COLLAR	1	
9	B65-F113B-00	DAMPER	1	
10	90105-108C9	BOLT, FLANGE	1	
11	95602-10200	NUT, SELF-LOCKING	1	
12	90105-10283	BOLT, FLANGE	2	
13	95602-10200	NUT, SELF-LOCKING	2	
14	5P2-F7114-00	STOPPER, MAIN STAND	2	
15	90387-08821	COLLAR	2	
16	90105-088E3	BOLT, FLANGE	2	
17	95602-08200	NUT, U FLANGE	2	
18	D11-F8356-00	STAY 1	1	
19	90520-15012	DAMPER, PLATE	1	
20	92012-08012	BOLT, BUTTON HEAD	3	
21	B63-F5887-00	HOLDER, BRAKE HOSE 3	1	
22	92012-06010	BOLT, BUTTON HEAD	1	
23	B8A-F587A-00	HOLDER, BRAKE HOSE 4	1	
24	92012-06010	BOLT, BUTTON HEAD	1	
25	D11-F8358-00	STAY 3	1	
26	95D32-06010	BOLT, FLANGE DEEP RECESS	2	
27	B63-F1521-00	FLAP, FRONT FENDER	1	

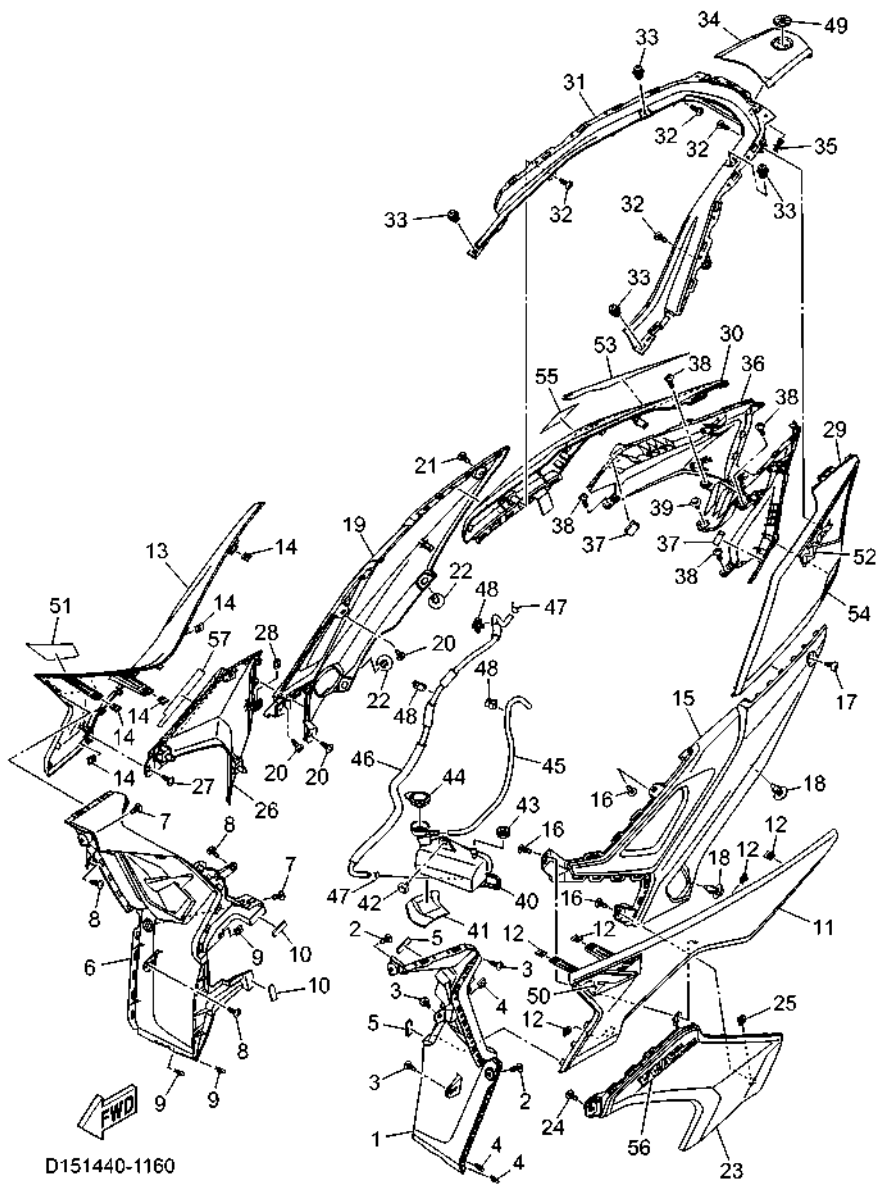


FIG. 15 FENDER



BWP1460-0150

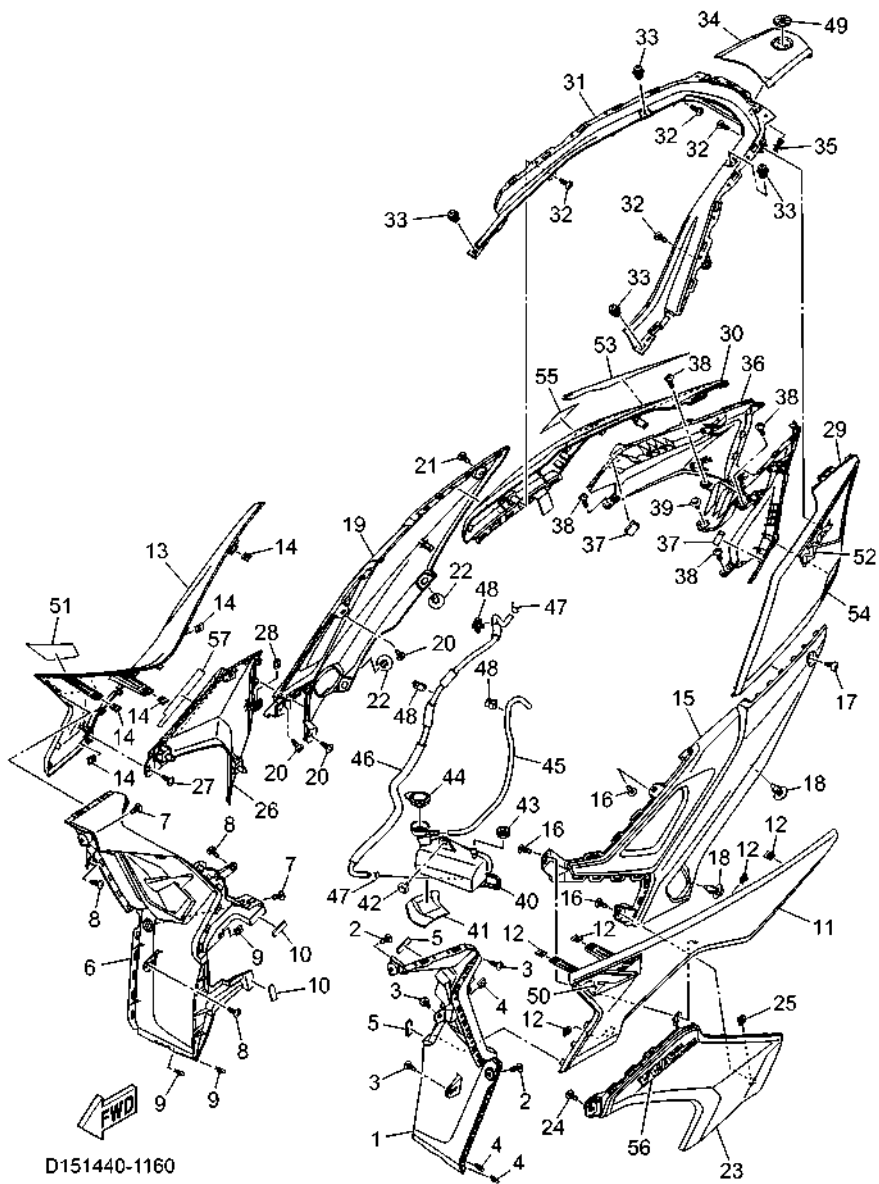
REF. NO.	PART NO.	DESCRIPTION	D151	REMARKS
1	D14-F1511-00	FENDER, FRONT	1	
2	D14-F1556-00-P2	FENDER, FRONT 2	1	UR FOR DPBMU
	D14-F1556-00-P3	FENDER, FRONT 2	1	UR VVM2 FOR WM6
3	90183-06818	NUT, SPRING	4	
4	90109-068B5	BOLT	4	
5	90109-068A4	BOLT	4	
6	D14-F1552-10	FENDER, INNER	1	UR
	D14-F1552-00	FENDER, INNER	1	UR
7	90269-06821	RIVET	4	
8	97707-50016	SCREW, TRUSS HEAD TAPPING	2	
9	D11-F1611-00	FENDER, REAR	1	
10	90119-06044	BOLT, WITH WASHER	2	
11	90183-06800	NUT, SPRING	1	
12	90183-05807	NUT, SPRING	6	
13	90183-04039	NUT, SPRING	1	
14	D11-F162R-00	FENDER 2	1	
15	90109-063F1	BOLT	2	
16	90119-06096	BOLT, WITH WASHER	1	
17	90183-05807	NUT, SPRING	2	
18	B63-F482H-00	CAP	1	
19	B63-F465E-00	ROTOR COMP.	1	
20	B63-F117K-00	STAY, LOCK	1	
21	95022-06020	BOLT, FLANGE	1	
22	90183-06800	NUT, SPRING	1	
23	D14-F1578-00	EMBLEM	2	
24	55D-H5130-00	REAR REFLECTOR ASSY	1	



D151440-1160

FIG. 16 SIDE COVER

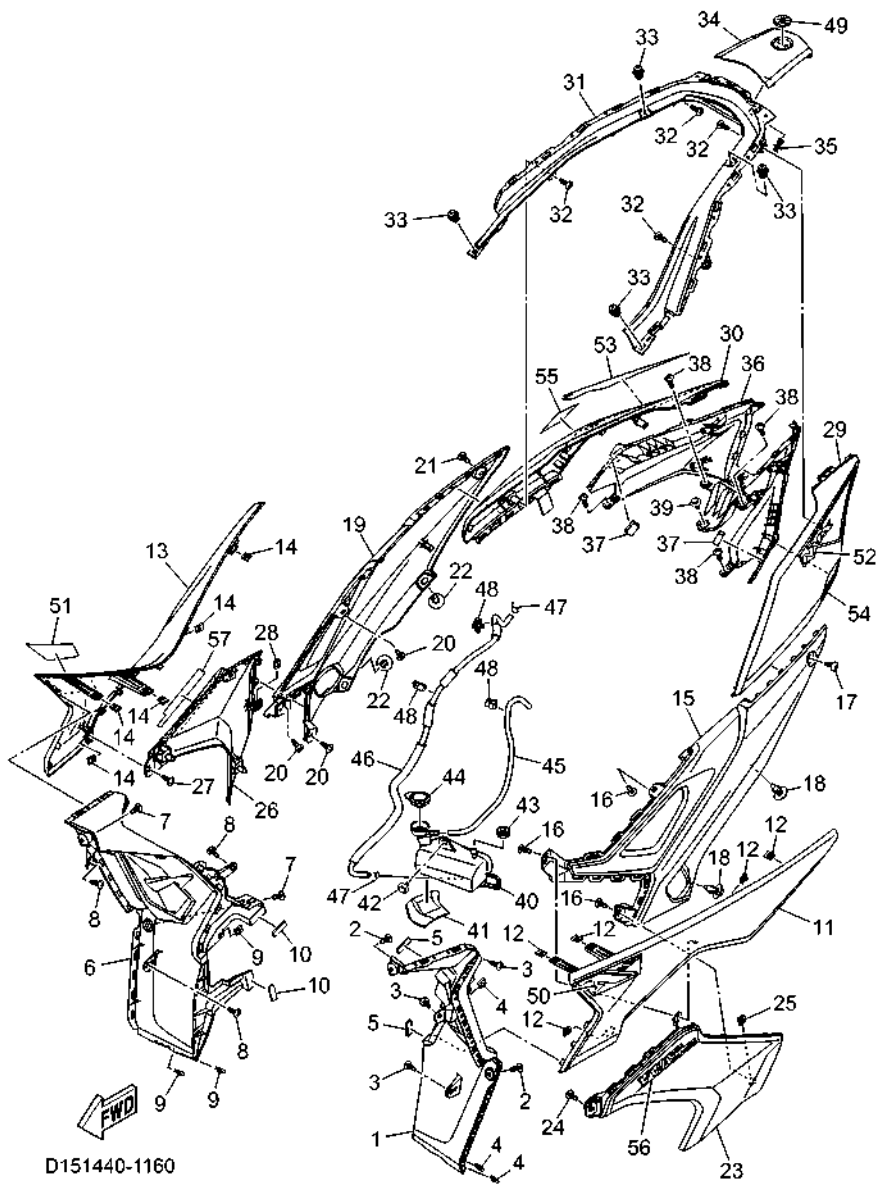
REF. NO.	PART NO.	DESCRIPTION	D151	REMARKS
1	D14-F1711-00	COVER, SIDE 1	1	
2	90167-05801	SCREW, TAPPING	2	
3	97707-50016	SCREW, TRUSS HEAD TAPPING	3	
4	90183-05807	NUT, SPRING	3	
5	90520-03802	DAMPER, PLATE	2	
6	D14-F1721-00	COVER, SIDE 2	1	
7	90167-05801	SCREW, TAPPING	2	
8	97707-50016	SCREW, TRUSS HEAD TAPPING	3	
9	90183-05807	NUT, SPRING	3	
10	90520-03802	DAMPER, PLATE	2	
11	D14-F1731-00-P2	COVER, SIDE 3	1	UR RYC1 FOR DPBMU
	D14-F1731-00-P3	COVER, SIDE 3	1	UR VVM2 FOR WM6
12	90183-05807	NUT, SPRING	5	
13	D14-F1741-00-P2	COVER, SIDE 4	1	UR RYC1 FOR DPBMU
	D14-F1741-00-P3	COVER, SIDE 4	1	UR VVM2 FOR WM6
14	90183-05807	NUT, SPRING	5	
15	D14-F171N-00	MOLE, SIDE COVER 3	1	
16	97707-50016	SCREW, TRUSS HEAD TAPPING	3	
17	90167-05801	SCREW, TAPPING	1	
18	90269-08010	RIVET	2	
19	D14-F171R-00	MOLE, SIDE COVER 4	1	
20	97707-50016	SCREW, TRUSS HEAD TAPPING	3	
21	90167-05801	SCREW, TAPPING	1	
22	90269-08010	RIVET	2	
23	D14-F171T-00-P0	MOLE, SIDE COVER 5	1	MBL2
24	97707-50016	SCREW, TRUSS HEAD TAPPING	1	
25	90183-05807	NUT, SPRING	1	



**FIG. 16 SIDE COVER**

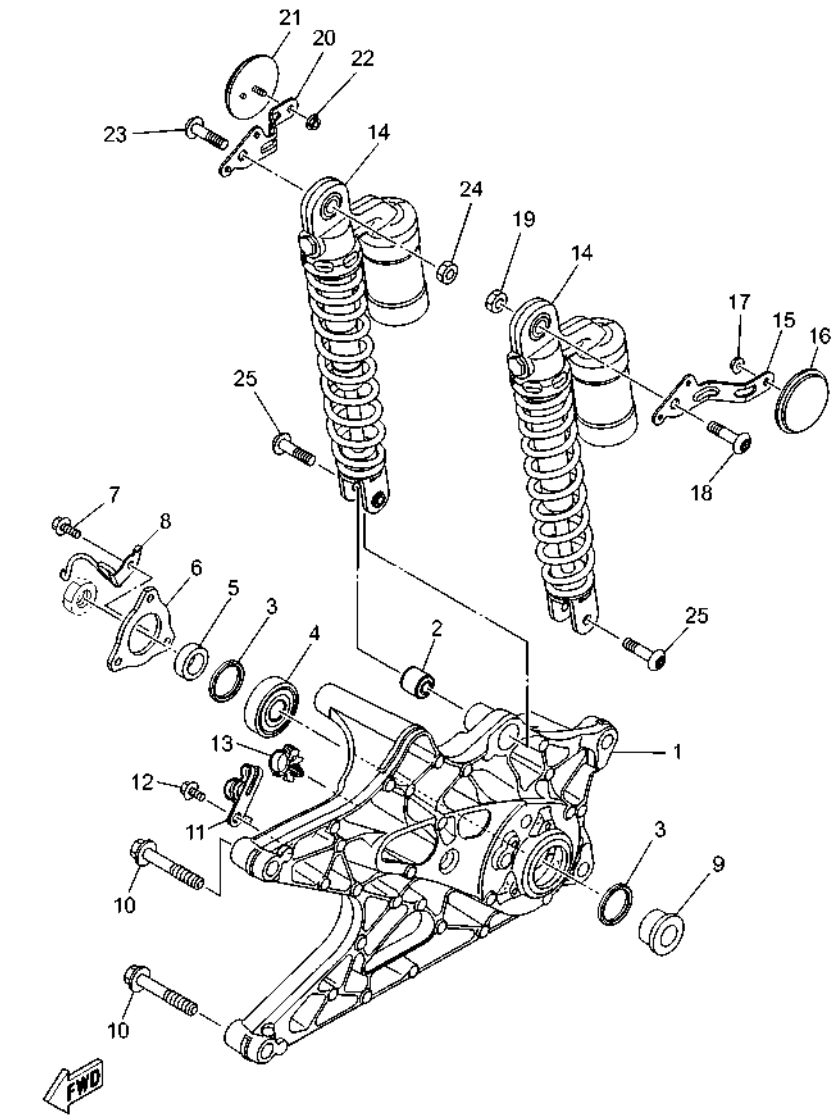
REF. NO.	PART NO.	DESCRIPTION	D151			REMARKS
26	D14-F171U-00-P0	MOLE, SIDE COVER 6	1			MBL2
27	97707-50016	SCREW, TRUSS HEAD TAPPING	1			
28	90183-05807	NUT, SPRING	1			
29	D14-F171E-00-P2	COVER, SIDE 5	1			UR FOR DPBMU
	D14-F171E-00-P3	COVER, SIDE 5	1			UR FOR WM6
30	D14-F171X-00-P2	COVER, SIDE 6	1			UR FOR DPBMU
	D14-F171X-00-P3	COVER, SIDE 6	1			UR FOR WM6
31	D14-F1716-00	LID, SIDE COVER	1			
32	97707-50016	SCREW, TRUSS HEAD TAPPING	4			
33	90269-06812	RIVET	4			
34	D14-F471K-00-P2	COVER, TAIL 1	1			UR MBL2 FOR DPBMU
	D14-F471K-00-P3	COVER, TAIL 1	1			UR SMX FOR WM6
35	90269-06821	RIVET	1			
36	D14-F472K-00	COVER, TAIL 2	1			
37	90520-20825	DAMPER, PLATE	2			
38	97707-50016	SCREW, TRUSS HEAD TAPPING	4			
39	90109-068B5	BOLT	1			
40	B65-F1871-00	TANK, RECOVERY	1			
41	90520-02829	DAMPER, PLATE	1			
42	90109-068B5	BOLT	1			
43	90480-14808	GROMMET	1			
44	1S9-F1875-00	CAP	1			
45	B65-F1816-00	PIPE 1	1			
46	D09-F1817-00	PIPE 2	1			
47	90467-08003	CLIP	2			
48	90464-07805	CLAMP	3			
49	5P2-F1737-00	EMBLEM	1			

**FIG. 16 SIDE COVER**



D151440-1160

REF. NO.	PART NO.	DESCRIPTION	D151			REMARKS
50	D15-F173E-00	GRAPHIC 1	1			UR FOR DPBMU
	D15-F173E-10	GRAPHIC 1	1			UR FOR WM6
51	D15-F173F-00	GRAPHIC 2	1			UR FOR DPBMU
	D15-F173F-10	GRAPHIC 2	1			UR FOR WM6
52	D15-F174G-00	GRAPHIC 3	1			UR FOR DPBMU
	D15-F174G-10	GRAPHIC 3	1			UR FOR WM6
53	D15-F174H-00	GRAPHIC 4	1			UR FOR DPBMU
	D15-F174H-10	GRAPHIC 4	1			UR FOR WM6
54	D15-F174J-00	GRAPHIC 5	1			UR FOR DPBMU
	D15-F174J-10	GRAPHIC 5	1			UR FOR WM6
55	D15-F174K-00	GRAPHIC 6	1			UR FOR DPBMU
	D15-F174K-10	GRAPHIC 6	1			UR FOR WM6
56	D15-F179J-00	GRAPHIC 7	1			
57	D15-F179J-00	GRAPHIC 7	1			

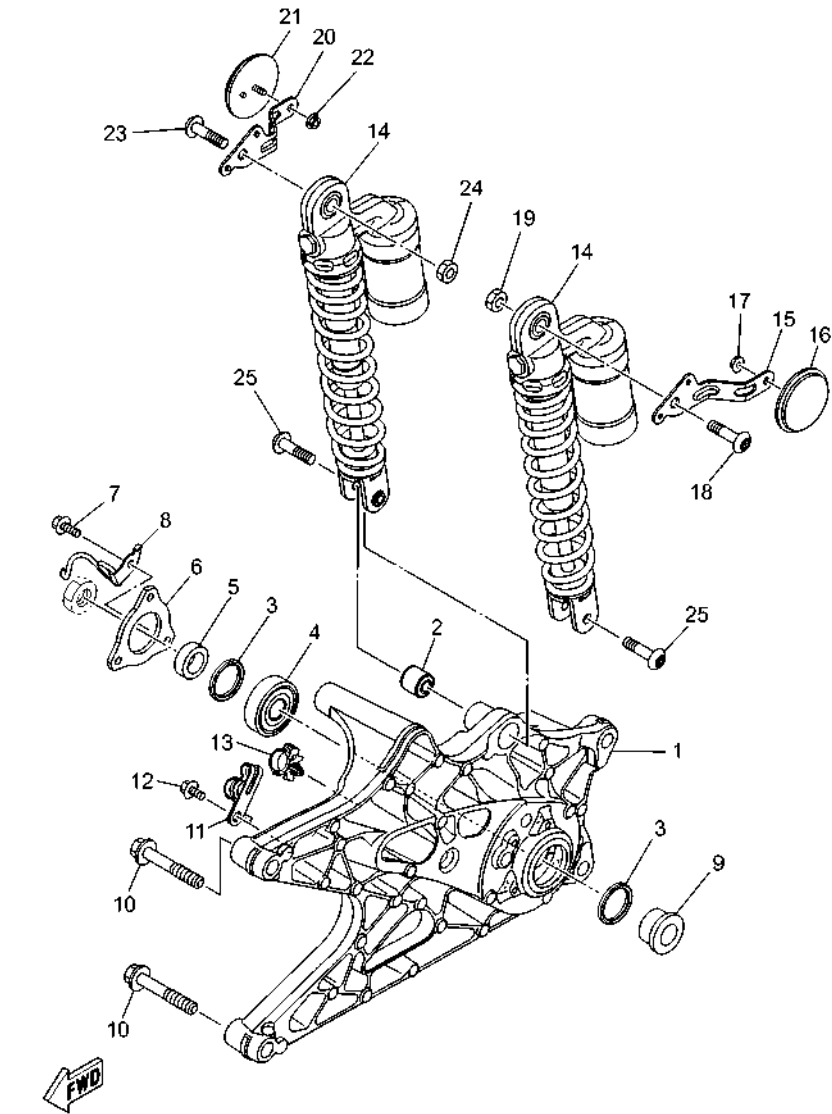


D151440-1170

FIG. 17 REAR ARM & SUSPENSION

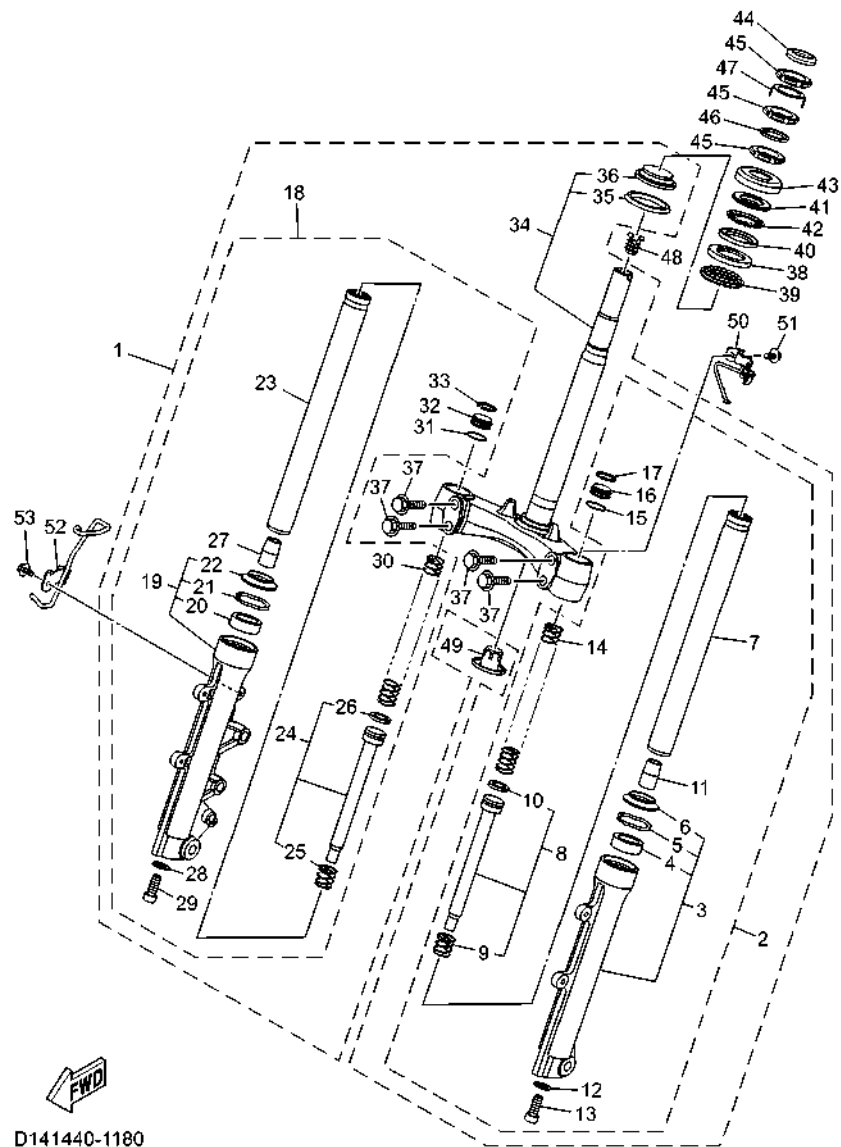
REF. NO.	PART NO.	DESCRIPTION	D151			REMARKS
1	B6H-F2171-10	ARM, REAR 1	1			
2	4D1-F2216-00	BUSH, REAR SHOCK ABSORBER	1			UR
	90388-08803	DAMPER	1			UR
3	93106-28801	OIL SEAL	2			
4	93306-303YV	BEARING	1			
5	90387-17807	COLLAR	1			
6	BBN-F2117-00	CAP	1			
7	95D37-06016	BOLT, FLANGE DEEP RECESS	3			
8	D11-F588G-00	HOLDER, BRAKE HOSE 6	1			
9	90387-17808	COLLAR	1			
10	95D32-10060	BOLT, FLANGE DEEP RECESS	2			
11	D11-F5886-00	HOLDER, BRAKE HOSE	1			
12	95D32-06012	BOLT, FLANGE DEEP RECESS	1			
13	90464-16006	CLAMP	1			
14	D14-F2210-00	SHOCK ABSORBER ASSY, REAR	2			
15	D14-F221A-00	BRACKET 1	1			
16	2FC-H5111-00	REFLECTOR, 1	1			UR
	BSM-H5111-00	REFLECTOR, 1	1			UR
17	95702-05500	NUT, FLANGE	1			
18	90149-08804	SCREW	1			
19	95302-08600	NUT, HEXAGON	1			
20	D14-F221B-00	BRACKET 2	1			
21	2FC-H5111-00	REFLECTOR, 1	1			UR
	BSM-H5111-00	REFLECTOR, 1	1			UR
22	95702-05500	NUT, FLANGE	1			
23	90149-08804	SCREW	1			
24	95302-08600	NUT, HEXAGON	1			

FIG. 17 REAR ARM & SUSPENSION



D151440-1170

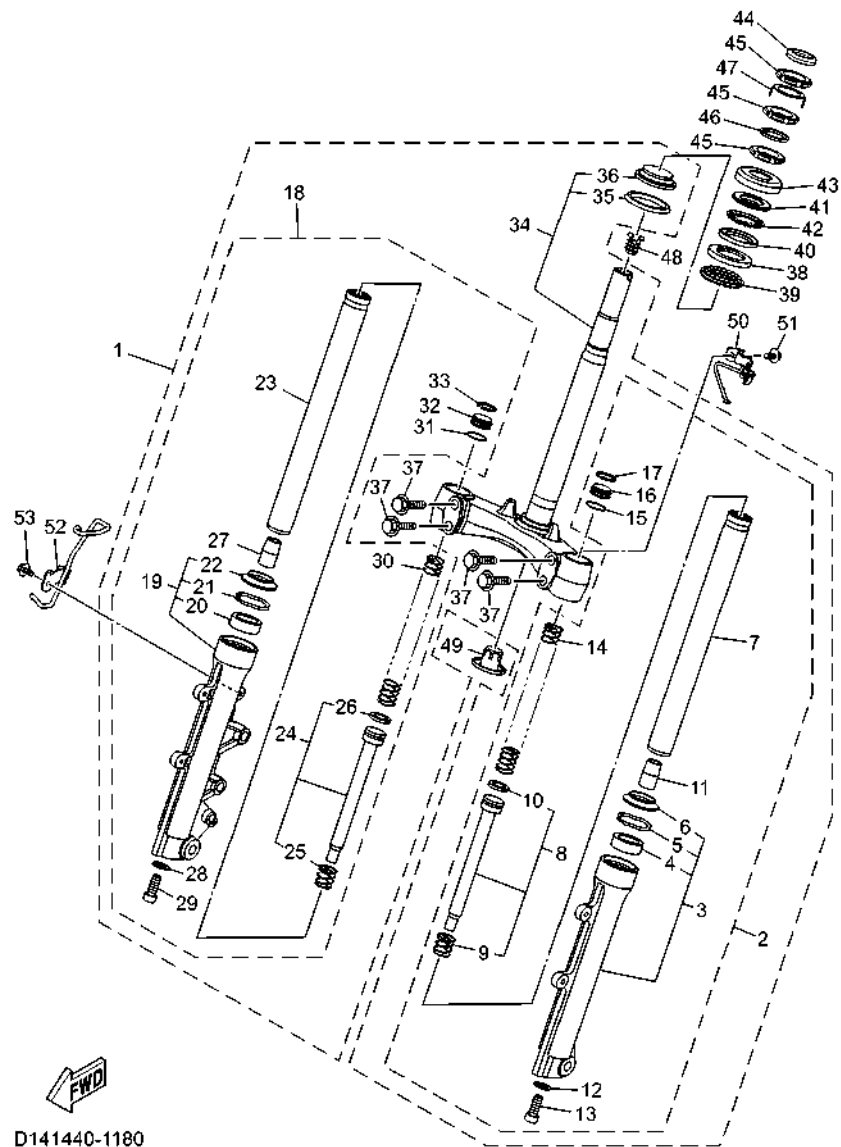
REF. NO.	PART NO.	DESCRIPTION	D151				REMARKS
25	90149-08804	SCREW	2				



D141440-1180

FIG. 18 STEERING

REF. NO.	PART NO.	DESCRIPTION	D151	REMARKS
1	D14-F3100-00	FRONT FORK ASSY	1	
2	D14-F3102-00	.FRONT FORK ASSY (L.H)	1	
3	D14-F3126-00	..TUBE, OUTER (L.H)	1	
4	3HB-F3145-00	...OIL SEAL	1	
5	3V3-F3156-00	...RING, SNAP	1	
6	3HB-F3144-00	...SEAL, DUST	1	
7	D14-F3110-00	..INNER TUBE COMP.1	1	
8	2DP-F3170-00	..CYLINDER COMP., FRONT FORK	1	
9	2K5-23152-00	...SPRING, SUB	1	
10	2DP-F3157-00	...RING, PISTON	1	
11	4TE-F3173-00	..SPINDLE, TAPER	1	
12	509-F3158-L0	..GASKET	1	
13	278-F3181-50	..BOLT, HEXAGON SOCKET HEAD	1	
14	BLS-F3141-00	..SPRING, FRONT FORK	1	
15	3Y6-23114-00	..GASKET	1	
16	2DP-F3111-00	..BOLT, CAP	1	
17	2DP-F3153-00	..RING, SNAP	1	
18	D14-F3103-00	.FRONT FORK ASSY (R.H)	1	
19	D14-F3136-00	..TUBE, OUTER 2	1	
20	3HB-F3145-00	...OIL SEAL	1	
21	3V3-F3156-00	...RING, SNAP	1	
22	3HB-F3144-00	...SEAL, DUST	1	
23	D14-F3110-00	..INNER TUBE COMP.1	1	
24	2DP-F3170-00	..CYLINDER COMP., FRONT FORK	1	
25	2K5-23152-00	...SPRING, SUB	1	
26	2DP-F3157-00	...RING, PISTON	1	
27	4TE-F3173-00	..SPINDLE, TAPER	1	



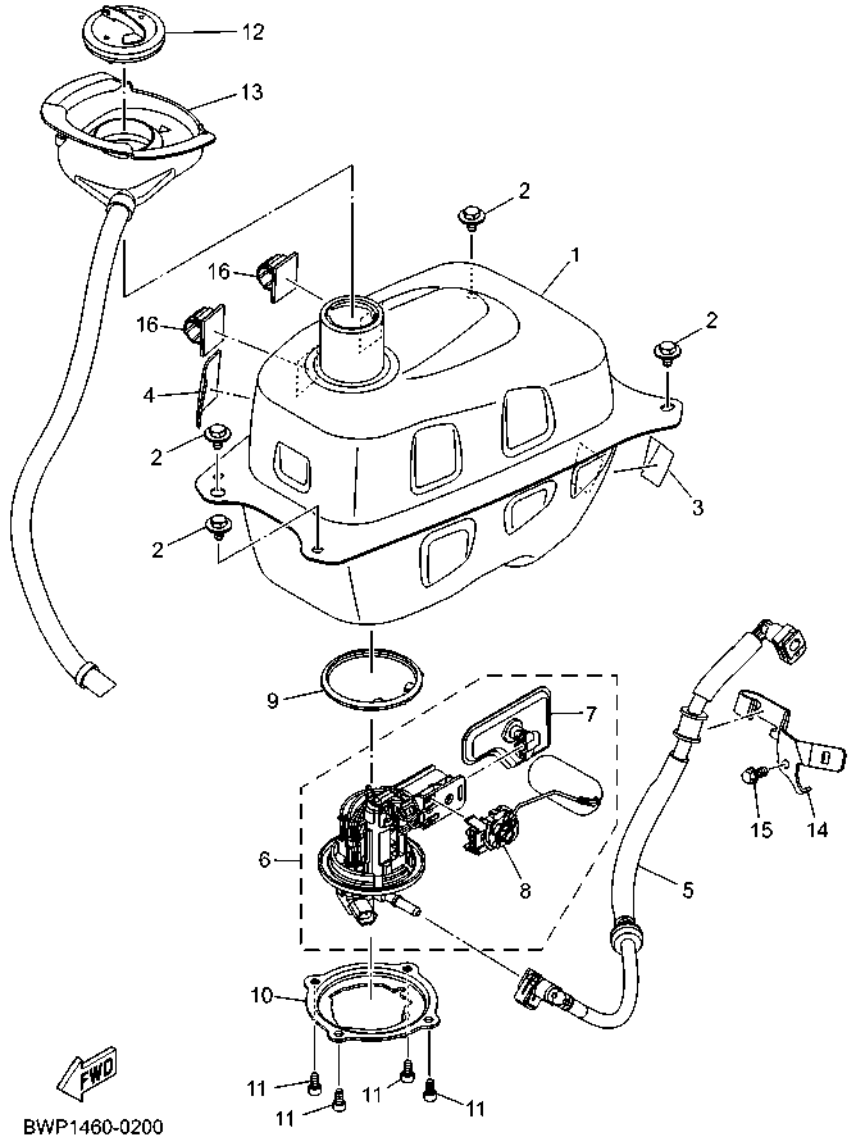
D141440-1180

FIG. 18 STEERING

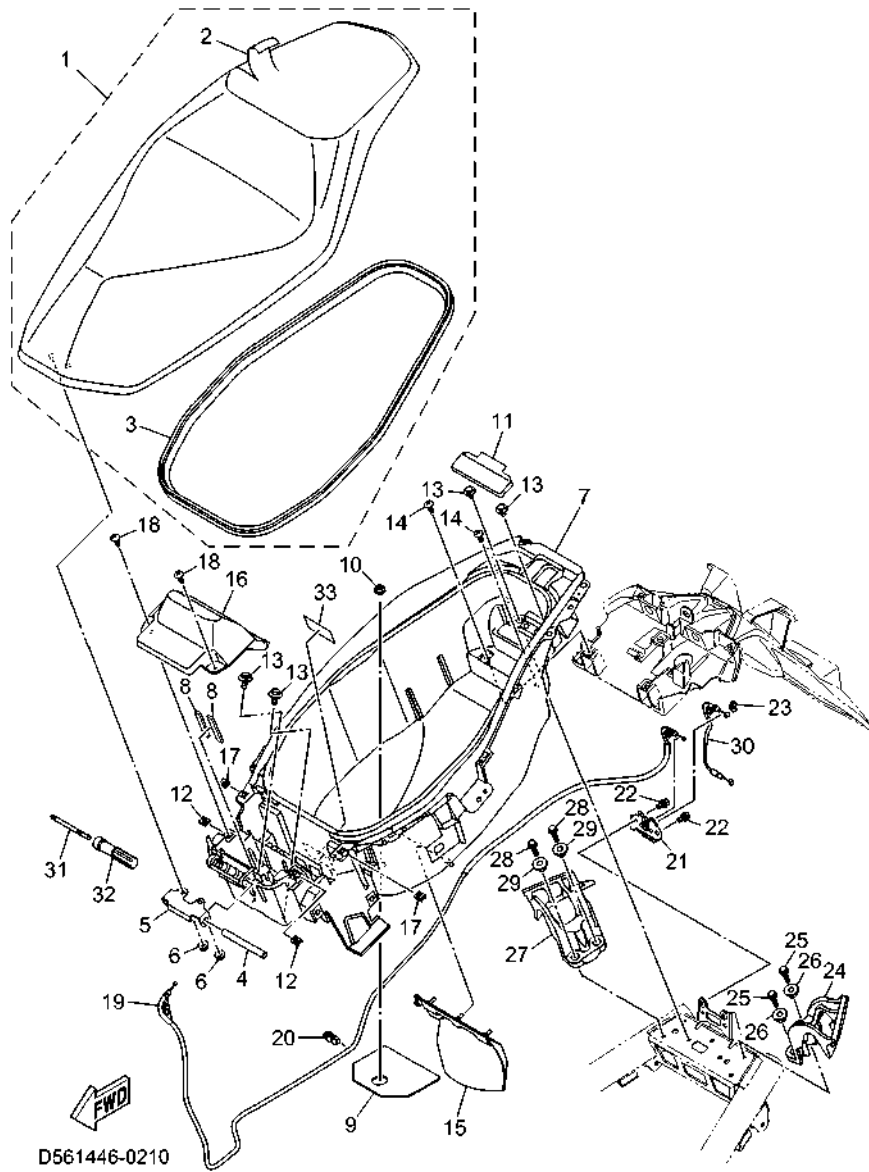
REF. NO.	PART NO.	DESCRIPTION	D151			REMARKS
28	509-F3158-L0	..GASKET	1			
29	278-F3181-50	..BOLT, HEXAGON SOCKET HEAD	1			
30	BLS-F3141-00	..SPRING, FRONT FORK	1			
31	3Y6-23114-00	..GASKET	1			
32	2DP-F3111-00	..BOLT, CAP	1			
33	2DP-F3153-00	..RING, SNAP	1			
34	D14-F3340-00	..UNDER BRACKET COMP.	1			
35	B63-F3462-00	..SEAL, DUST	1			
36	4FP-F3411-10	..RACE, BALL 1	1			
37	5YW-F3346-10	..BOLT 1	4			
38	1KL-F3412-10	RACE, BALL 2	1			
39	5VL-F341E-10	RETAINER, BALL BEARING	1			
40	4RT-F3412-10	RACE, BALL 2	1			
41	4RT-F3411-10	RACE, BALL 1	1			
42	1P6-F341E-10	RETAINER, BALL BEARING	1			
43	5P1-F3416-01	COVER, BALL RACE 2	1			
44	BVY-F3818-00	COVER, STEERING	1			
45	90179-25810	NUT	3			
46	90202-26142	WASHER, PLATE	1			
47	1PA-F3418-00	WASHER, SPECIAL	1			UR
	1SK-F3418-00	WASHER, SPECIAL	1			UR
48	1DR-F312G-02	PLUG, HOLE	1			
49	5P1-F3123-00	COVER, UNDER 1	1			
50	D11-F5875-00	HOLDER, BRAKE HOSE 1	1			
51	95D02-06012	BOLT, FLANGE DEEP RECESS	1			
52	D11-F5876-00	HOLDER, BRAKE HOSE 2	1			
53	95D07-06012	BOLT, FLANGE DEEP RECESS	1			



FIG. 19 FUEL TANK



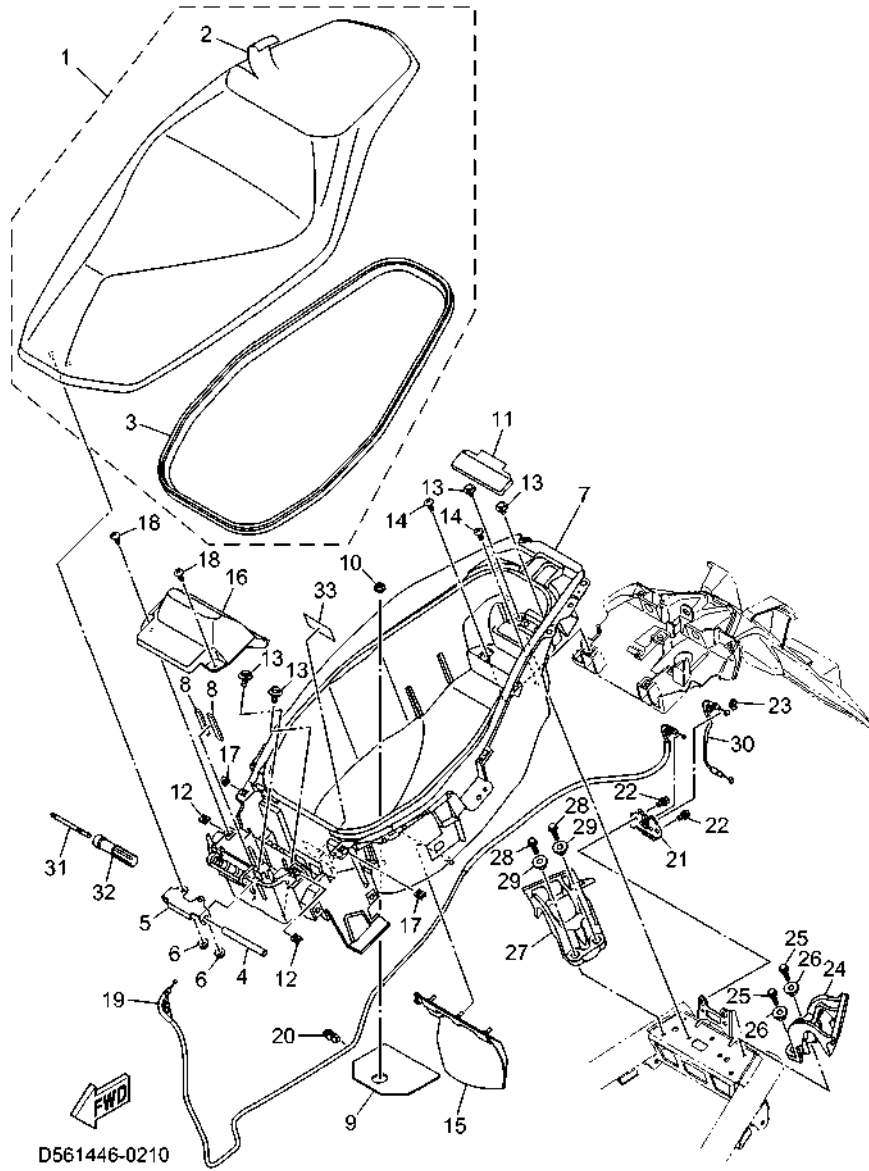
REF. NO.	PART NO.	DESCRIPTION	D151				REMARKS
1	D14-F4110-00	FUEL TANK COMP.	1				
2	90119-068D6	BOLT, WITH WASHER	4				
3	5D9-F414G-10	SEAL	1				
4	90520-02826	DAMPER, PLATE	1				
5	B65-E3971-00	PIPE, FUEL 1	1				
6	B65-E3907-11	FUEL PUMP COMP.	1				
7	54P-E3915-00	.FILTER, FUEL SUCTION	1				
8	B65-H5752-00	.SENDER	1				
9	54P-F414G-10	SEAL	1				
10	BF6-F4491-00	BRACKET, FUEL PUMP	1				
11	91332-05010	BOLT	4				
12	B6H-F4610-01	CAP ASSY	1				
13	BWP-F414A-00	COVER, FILLER	1				
14	BBN-F419A-00	HOLDER	1				
15	95E37-06012	BOLT, FLANGE DEEP RECESS	1				
16	90464-14002	CLAMP	2				



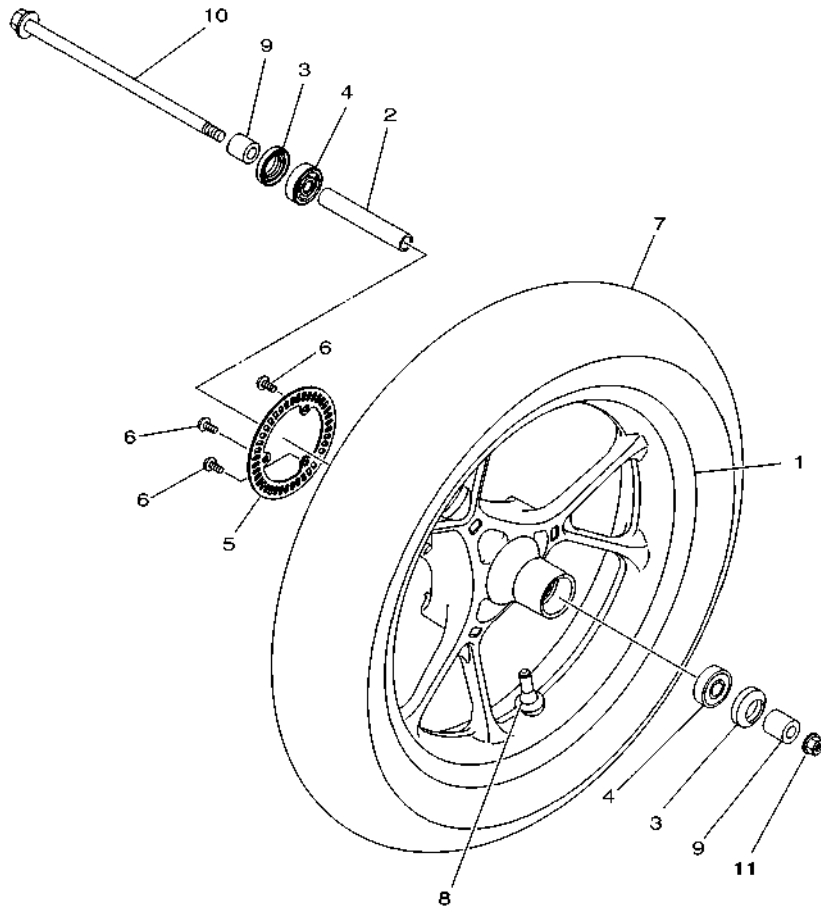
**FIG. 20 SEAT**

REF. NO.	PART NO.	DESCRIPTION	D151				REMARKS
1	BWR-F4730-00	DOUBLE SEAT ASSY	1				
2	BWR-F470F-00	.SEAT COVER COMP.	1				
3	BBN-F475M-00	.SEAL	1				
4	2WB-F4727-00	PIN, SEAT FITTING	1				
5	D11-F4726-00	HINGE, SEAT	1				
6	95702-06500	NUT, FLANGE	2				
7	D11-F473R-00	BOX 1	1				
8	90520-04806	DAMPER, PLATE	2				
9	D11-F4737-00	DAMPER, SEAT	1				
10	4US-F6199-00	PLUG, BLIND	1				
11	B63-F384L-00	COVER, DUST	1				
12	90183-05807	NUT, SPRING	2				
13	90109-068B5	BOLT	4				
14	97707-50016	SCREW, TRUSS HEAD TAPPING	2				
15	D09-F1621-00	FLAP	1				
16	D12-H2129-00	COVER, BATTERY	1				
17	90183-05807	NUT, SPRING	2				
18	97707-50016	SCREW, TRUSS HEAD TAPPING	2				
19	BBN-F478E-00	CABLE, SEAT LOCK	1				
20	90464-12816	CLAMP	1				
21	B63-F4780-00	SEAT LOCK ASSY	1				
22	95E32-06010	BOLT, FLANGE DEEP RECESS	2				
23	1S8-F4768-00	STOPPER	1				
24	B63-F474A-10	ASSIST, GRIP	1				
25	95D32-06025	BOLT, FLANGE DEEP RECESS	2				
26	90387-08840	COLLAR	2				
27	B63-F474W-10	ASSIST,GRIP 2	1				

**FIG. 20 SEAT**



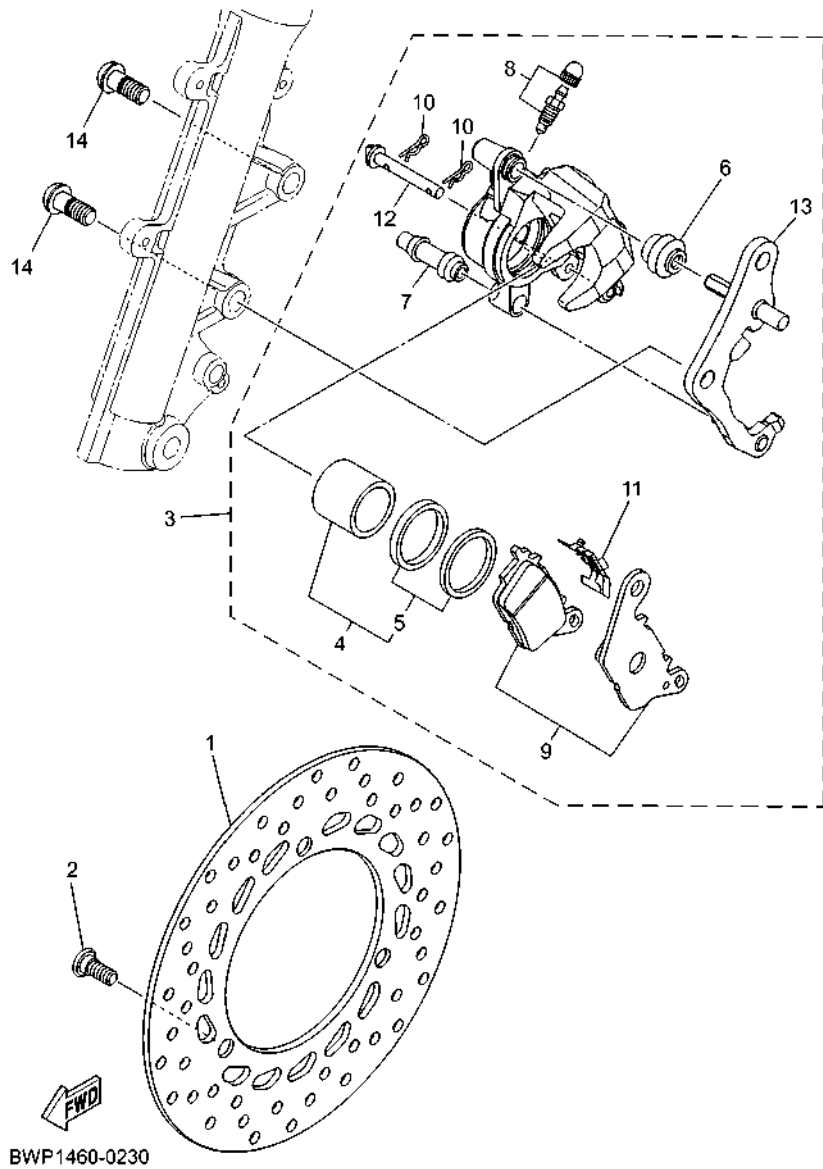
REF. NO.	PART NO.	DESCRIPTION	D151					REMARKS
28	95D32-06025	BOLT, FLANGE DEEP RECESS	2					
29	90387-08840	COLLAR	2					
30	B65-F479D-00	WIRE, SEAT LOCK 2	1					
31	D14-F8153-00	DRIVER PLUS	1					
32	D14-F8151-00	GRIP, DRIVER	1					
33	B17-F1668-00	LABEL, TIRE	1					



  
 B631422-S210

**FIG. 21 FRONT WHEEL**

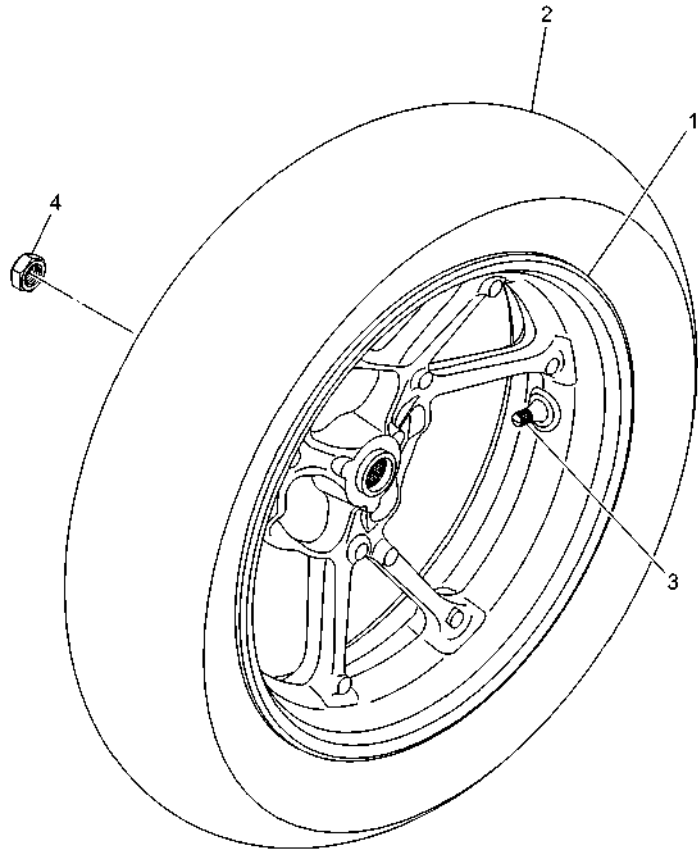
REF. NO.	PART NO.	DESCRIPTION	D151	REMARKS
1	B65-F5168-00-33	CAST WHEEL, FRONT	1	YB FOR DPBMU,WM6
2	90387-10848	COLLAR	1	
3	93106-20816	OIL SEAL	2	
4	93306-300YF	BEARING	2	
5	2DP-F517G-00	ROTOR, SENSOR	1	
6	90149-05030	SCREW	3	
7	94111-14804	TIRE (110/80-14 M/C 53P)	1	INOUE
8	93900-00817	VALVE, RIM (TR412)	1	
9	90387-10277	COLLAR	2	
10	B63-F5181-00	AXLE, WHEEL	1	
11	95602-10200	NUT, SELF-LOCKING	1	



**FIG. 22 FRONT BRAKE CALIPER**

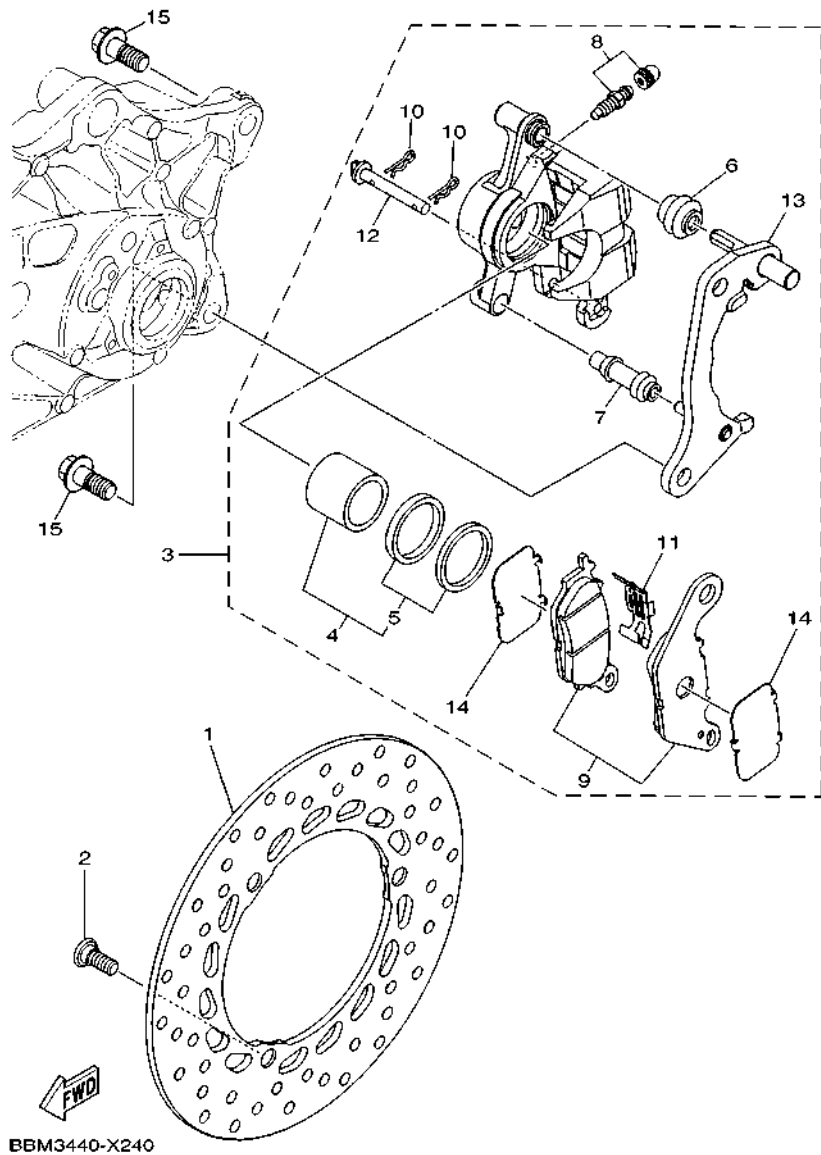
REF. NO.	PART NO.	DESCRIPTION	D151	REMARKS
1	2DP-F582U-00	DISK, BRAKE (RIGHT)	1	
2	90109-08232	BOLT	3	
3	B63-F580U-00	CALIPER ASSY (RIGHT)	1	
4	2BM-F5802-00	.PISTON ASSY, CALIPER	1	
5	5YP-F5803-50	..CALIPER SEAL KIT	1	
6	2BM-F5917-00	..BOOT, CALIPER	1	
7	5YP-F5937-00	..BOOT 2	1	
8	4C9-W0048-00	..BLEED SCREW KIT	1	
9	B63-F5805-00	..BRAKE PAD KIT	1	
10	5YP-F5925-01	..CLIP	2	
11	2BM-F5919-00	..SUPPORT, PAD	1	
12	5YP-F5924-00	..PIN, PAD	1	
13	2DP-F5920-00	..SUPT. BRKT. ASSY.	1	
14	90149-10805	SCREW	2	

**FIG. 23 REAR WHEEL**



REF. NO.	PART NO.	DESCRIPTION	D151				REMARKS
1	BWP-F5338-00-33	CAST WHEEL, REAR	1				YB FOR DPBMU,WM6
2	94114-14801	TIRE (140/70-14 M/C 62P)	1				INOUE
3	93900-00817	VALVE, RIM (TR412)	1				
4	90185-16800	NUT, SELF-LOCKING	1				
<hr/>							
<hr/>							
<hr/>							
<hr/>							
<hr/>							
<hr/>							
<hr/>							
<hr/>							
<hr/>							

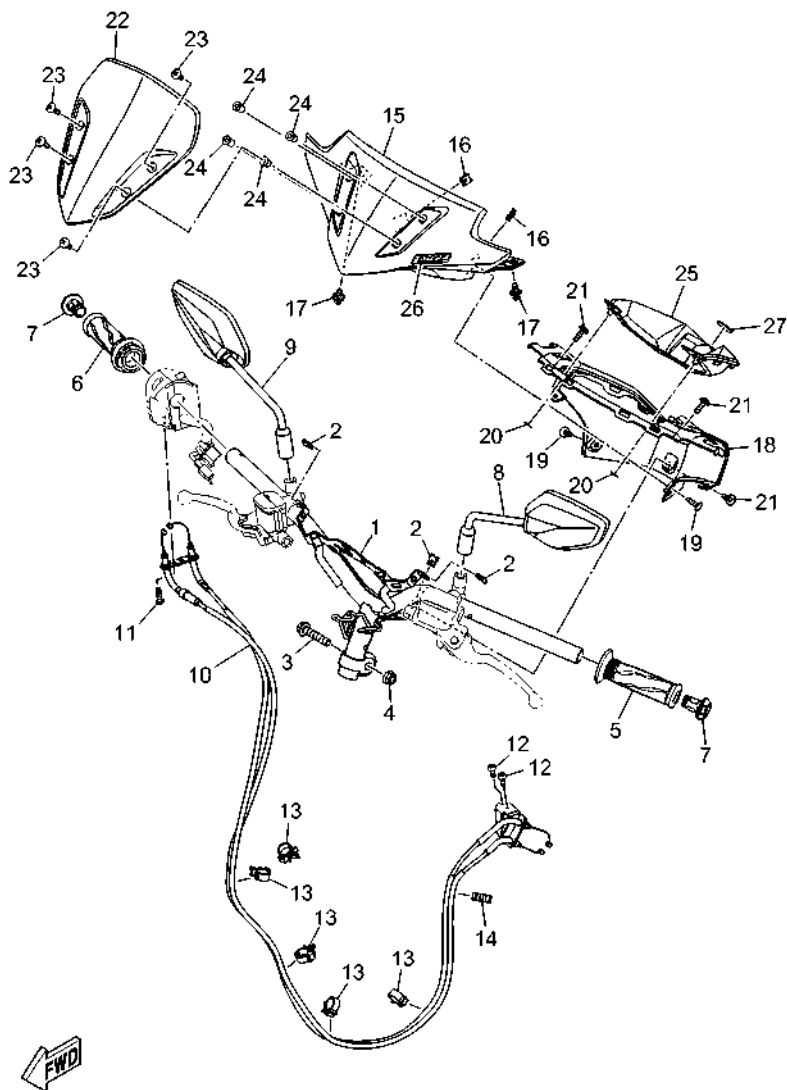
  
D091460-0240



**FIG. 24 REAR BRAKE CALIPER**

REF. NO.	PART NO.	DESCRIPTION	D151	REMARKS
1	2DP-F582W-00	DISK, REAR BRAKE 2	1	
2	90109-08232	BOLT	3	
3	B6H-F580W-00	CALIPER ASSY, REAR 2	1	
4	5P0-F5802-00	.PISTON ASSY, CALIPER	1	
5	5YP-F5803-50	..CALIPER SEAL KIT	1	
6	5YP-F5917-00	..BOOT, CALIPER	1	
7	5YP-F5937-00	..BOOT 2	1	
8	4C9-W0048-00	..BLEED SCREW KIT	1	
9	B6H-F5805-00	..BRAKE PAD KIT	1	
10	5YP-F5925-01	..CLIP	2	
11	5P0-F5919-01	..SUPPORT, PAD	1	
12	5YP-F5924-00	..PIN, PAD	1	
13	2DP-F5920-50	..SUPT. BRKT. ASSY.	1	
14	5P0-F5827-00	..SHIM, CALIPER	2	
15	95812-10030	BOLT, FLANGE	2	

FIG. 25 STEERING HANDLE & CABLE

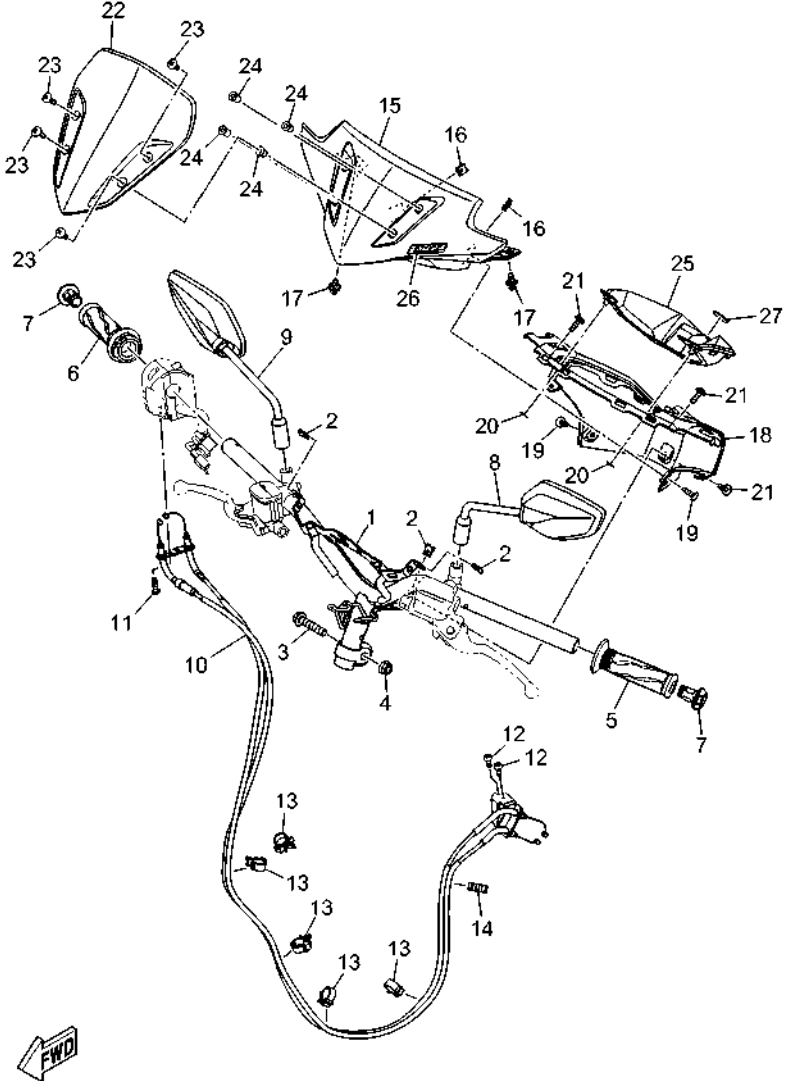


BWP1460-0260

REF. NO.	PART NO.	DESCRIPTION	D151	REMARKS
1	D11-F6110-00	HANDLE COMP.	1	
2	90183-05807	NUT, SPRING	3	
3	90105-108B0	BOLT, FLANGE	1	
4	90185-10011	NUT, SELF-LOCKING	1	
5	1VP-F6241-00	GRIP	1	
6	B92-F6240-00	GRIP ASSY	1	
7	B92-F6246-00	END, GRIP	2	
8	B70-F6280-00	REAR VIEW MIRROR ASSY (LEFT)	1	
9	B70-F6290-00	REAR VIEW MIRROR ASSY (RIGHT)	1	
10	BBN-F6301-01	THROTTLE CABLE ASSY	1	
11	92012-05016	BOLT, BUTTON HEAD	1	
12	91312-05010	BOLT, HEXAGON SOCKET HEAD	2	
13	90464-16006	CLAMP	5	
14	90464-07807	CLAMP	1	
15	D14-F6143-00-P1	COVER, HANDLE UPPER 1	1	UR FOR DPBMU
	D14-F6143-00-P0	COVER, HANDLE UPPER 1	1	UR MBL2 FOR WM6
16	90183-05807	NUT, SPRING	2	
17	90269-06821	RIVET	2	
18	D14-F6145-00	COVER, HANDLE 2	1	
19	97707-50016	SCREW, TRUSS HEAD TAPPING	2	
20	90183-06815	NUT, SPRING	2	
21	90167-05801	SCREW, TAPPING	3	
22	B63-F61AA-00	VISOR	1	
23	90150-05023	SCREW, ROUND HEAD	4	
24	90179-05804	NUT	4	UR
	90179-05849	NUT	4	UR
25	D14-H3559-00-P2	COVER, METER	1	UR RYC1 FOR DPBMU

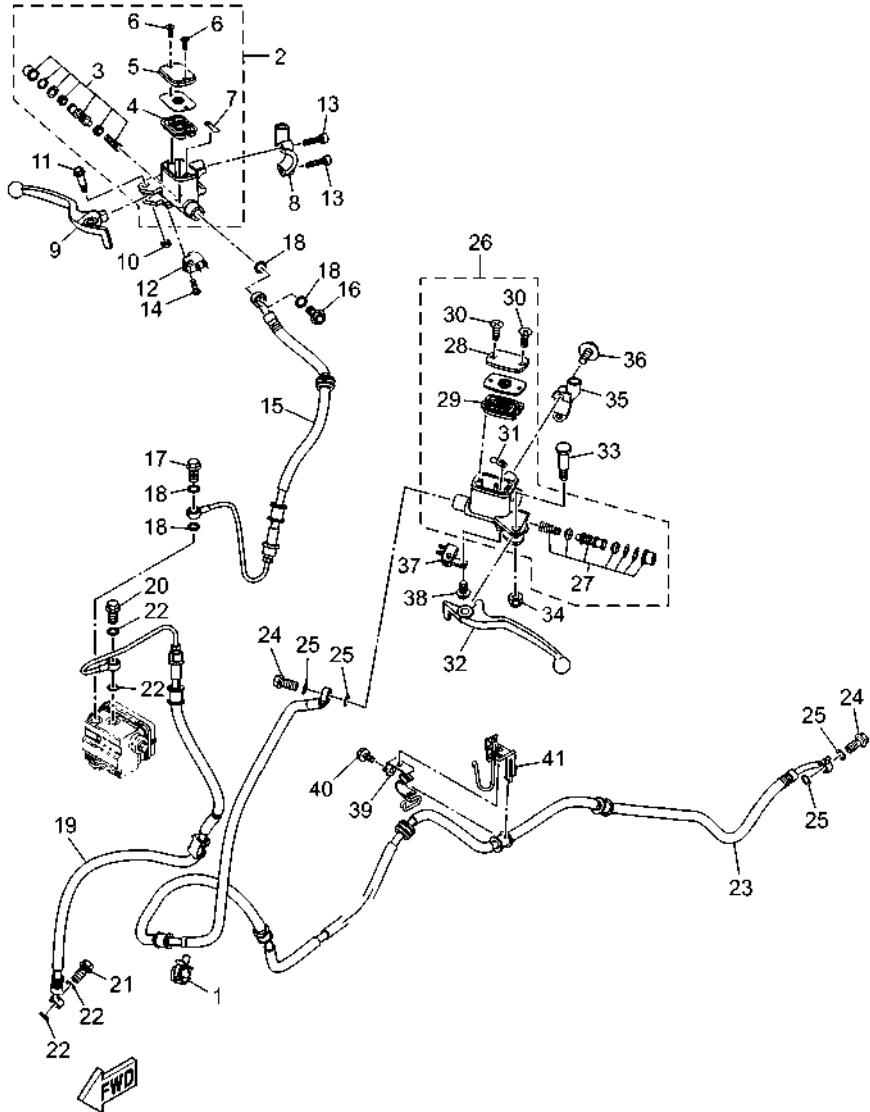


**FIG. 25 STEERING HANDLE & CABLE**



BWP1460-0260

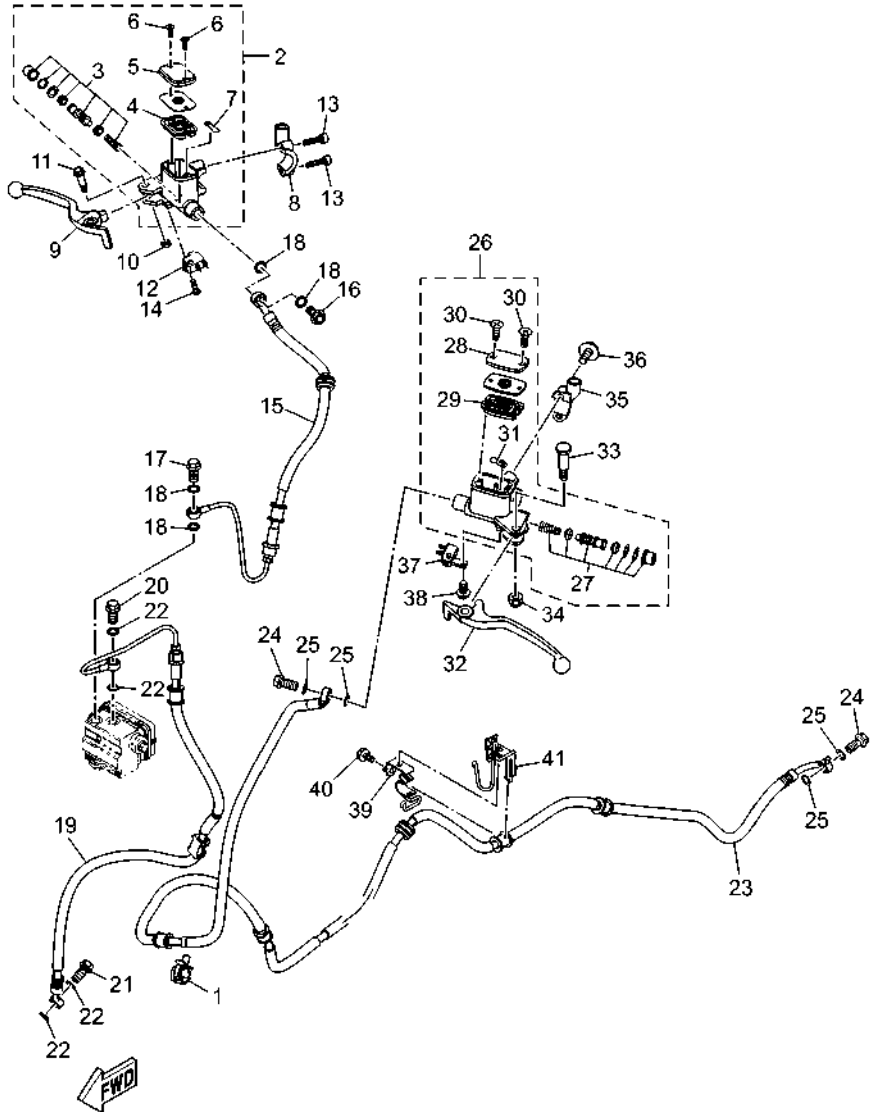
REF. NO.	PART NO.	DESCRIPTION	D151				REMARKS
25	D14-H3559-00-P3	COVER, METER	1				UR VVM2 FOR WM6
26	B92-F1737-00	EMBLEM	1				
27	5PV-F836B-00	TUNING FORK MARK	1				



D151440-1260

FIG. 26 FRONT MASTER CYLINDER

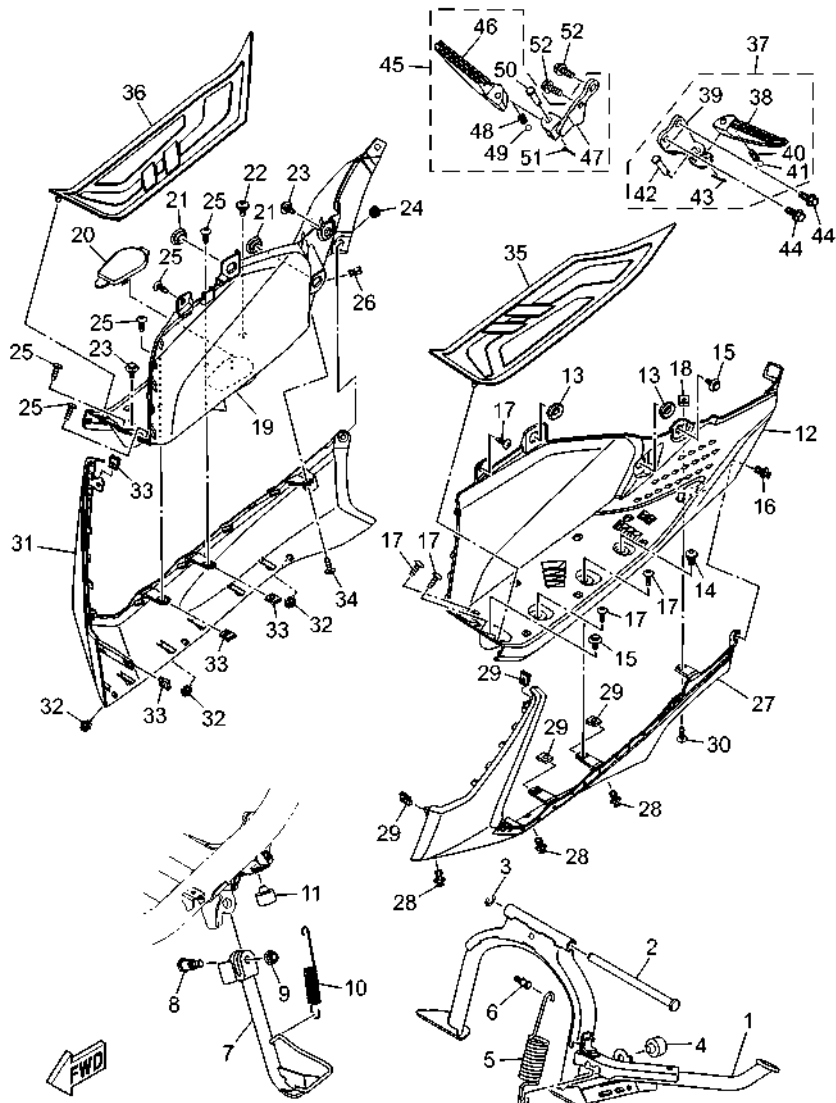
REF. NO.	PART NO.	DESCRIPTION	D151				REMARKS
1	90464-18808	CLAMP	1				
2	B63-F5870-00	MASTER CYLINDER SUB ASSY	1				
3	1WD-F5807-00	.CYLINDER KIT, MASTER	1				
4	2ND-F5854-00	.DIAPHRAGM, RESERVOIR	1				
5	B63-F5852-00	.CAP, RESERVOIR	1				
6	36Y-2589H-00	.SCREW	2				
7	3RW-F5889-00	.SEPARATOR	1				
8	5TL-F5867-11	BRACKET, MASTER CYLINDER (BLACK)	1				
9	2PV-H3922-00	LEVER 2	1				
10	95602-06100	NUT, SELF-LOCKING	1				
11	90109-06577	BOLT	1				
12	BKF-H3980-00	FRONT STOP SWITCH ASSY	1				
13	91317-06025	BOLT, HEXAGON SOCKET HEAD	2				
14	97602-04312	SCREW, PAN HEAD WITH WASHER	1				
15	BWP-F5873-00	HOSE, BRAKE 2	1				
16	90401-10812	BOLT, UNION	1				
17	90401-10015	BOLT, UNION	1				
18	90201-10118	WASHER, PLATE	4				
19	BWP-F5874-00	HOSE, BRAKE 3	1				
20	90401-10812	BOLT, UNION	1				
21	90401-10015	BOLT, UNION	1				
22	90201-10118	WASHER, PLATE	4				
23	BWP-F581J-00	HOSE, BRAKE 4	1				
24	90401-10812	BOLT, UNION	2				
25	90201-10118	WASHER, PLATE	4				
26	2DP-F580A-00	MASTER CYLINDER SUB ASSY 2	1				
27	2DP-F5807-10	.CYLINDER KIT, MASTER	1				



D151440-1260

FIG. 26 FRONT MASTER CYLINDER

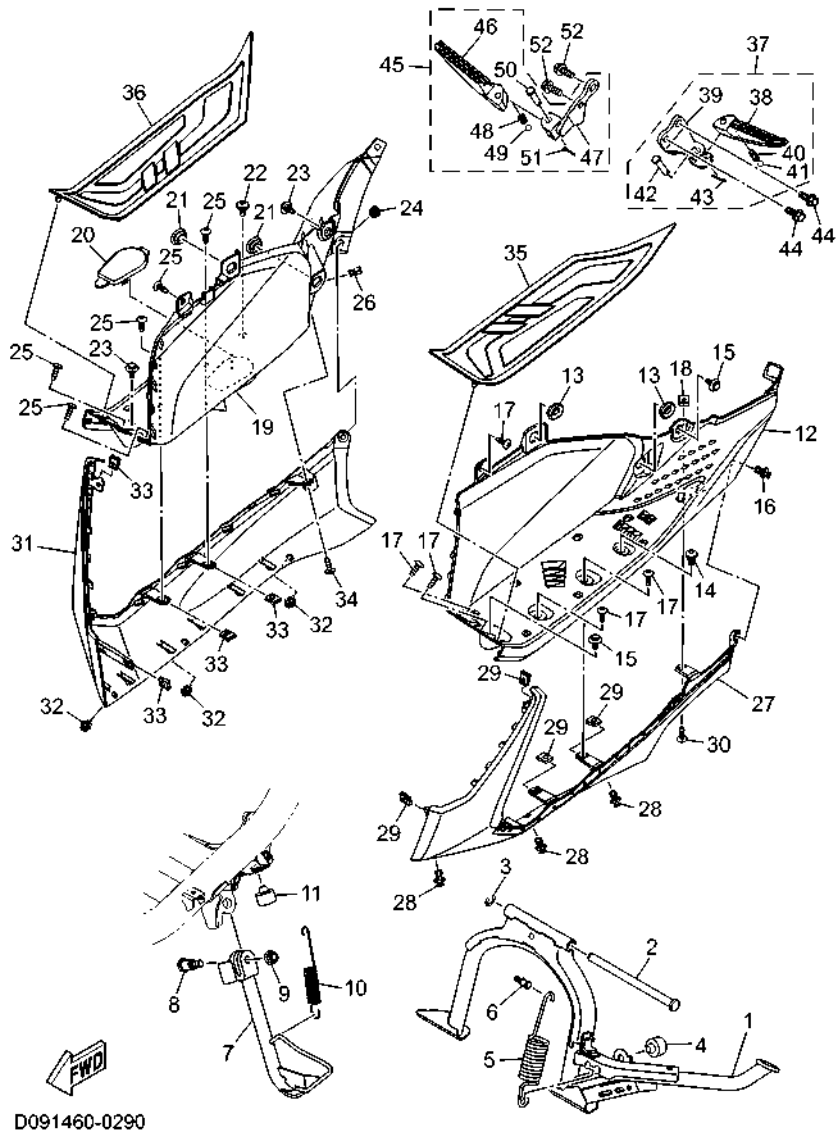
REF. NO.	PART NO.	DESCRIPTION	D151				REMARKS
28	2DP-F5852-00	.CAP, RESERVOIR	1				
29	5HV-F5854-10	.DIAPHRAGM, RESERVOIR	1				
30	98707-04012	.SCREW, FLAT HEAD	2				
31	5YP-F5889-00	.SEPARATOR	1				
32	BWP-H3912-00	LEVER 1	1				
33	2DP-F589F-00	BOLT, LEVER	1				
34	95602-06100	NUT, SELF-LOCKING	1				
35	BCM-F5867-00	BRACKET, MASTER CYLINDER	1				
36	1S9-F6332-00	BOLT	2				
37	B6H-H2530-00	STOP SWITCH ASSY	1				
38	97602-04312	SCREW, PAN HEAD WITH WASHER	1				
39	BWR-F5887-00	HOLDER, BRAKE HOSE 3	1				
40	95D02-06012	BOLT, FLANGE DEEP RECESS	1				
41	BWR-F5522-00	HOLDER	1				



D091460-0290

FIG. 27 STAND & FOOTREST

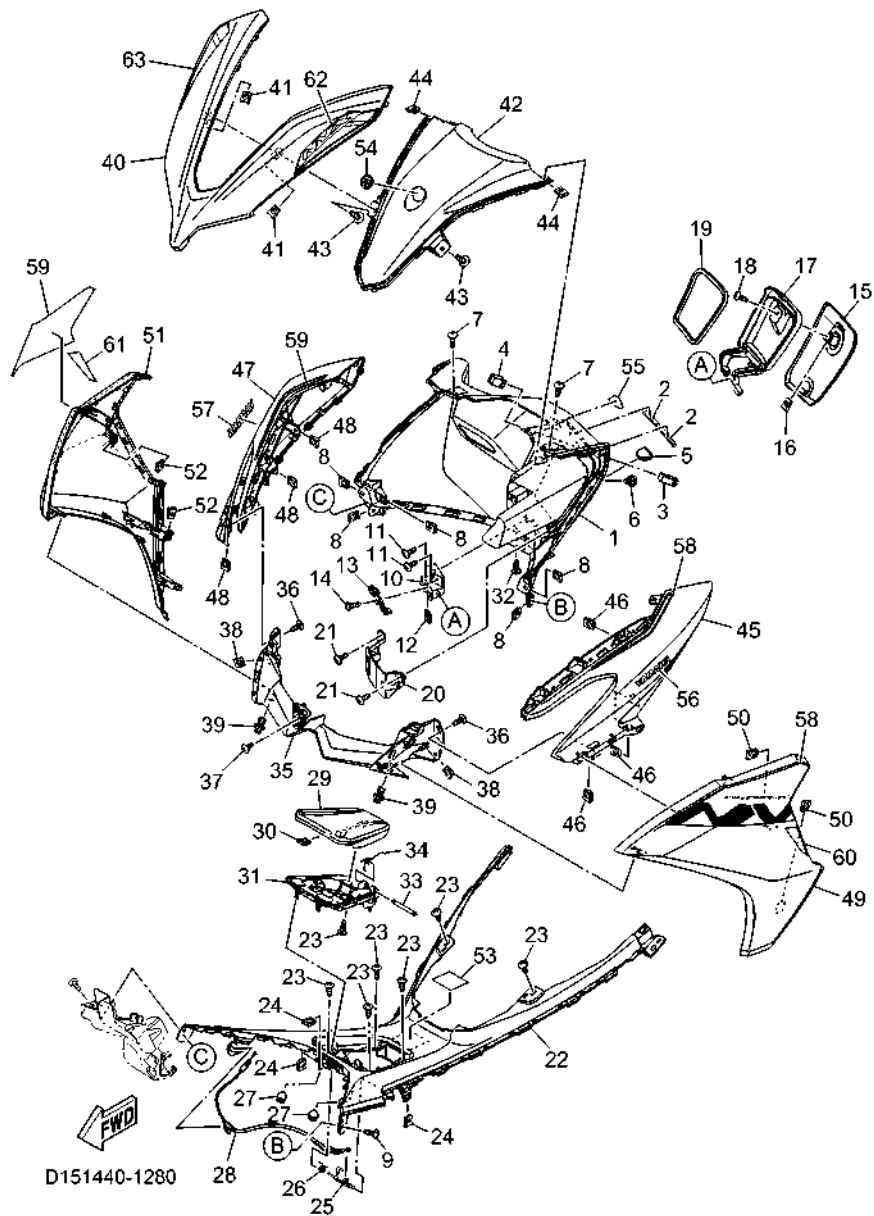
REF. NO.	PART NO.	DESCRIPTION	D151				REMARKS
1	D12-F7111-00	STAND, MAIN	1				
2	BBN-F7112-00	SHAFT, MAIN STAND	1				
3	99002-09600	CIRCLIP	1				
4	54P-F7114-00	STOPPER, MAIN STAND	1				
5	90506-40804	SPRING, TENSION	1				
6	90109-068B9	BOLT	1				
7	D11-F7311-00	STAND, SIDE	1				
8	B65-F7217-00	BOLT	1				UR
	B63-F7217-00	BOLT	1				UR
9	95602-10200	NUT, SELF-LOCKING	1				
10	90506-20818	SPRING, TENSION	1				
11	5VW-F7214-00	STOPPER	1				
12	D14-F7481-00	BOARD, FOOTREST	1				
13	90480-01559	GROMMET	2				
14	90109-068B3	BOLT	1				
15	90109-068B5	BOLT	2				
16	90269-06821	RIVET	1				
17	97707-50016	SCREW, TRUSS HEAD TAPPING	5				
18	90183-05807	NUT, SPRING	1				
19	D14-F7488-00	BOARD, FOOTREST 2	1				
20	2DP-F172W-01	COVER	1				
21	90480-01559	GROMMET	2				
22	90109-068B3	BOLT	1				
23	90109-068B5	BOLT	2				
24	90269-06821	RIVET	1				
25	97707-50016	SCREW, TRUSS HEAD TAPPING	5				
26	90183-05807	NUT, SPRING	1				



**FIG. 27 STAND & FOOTREST**

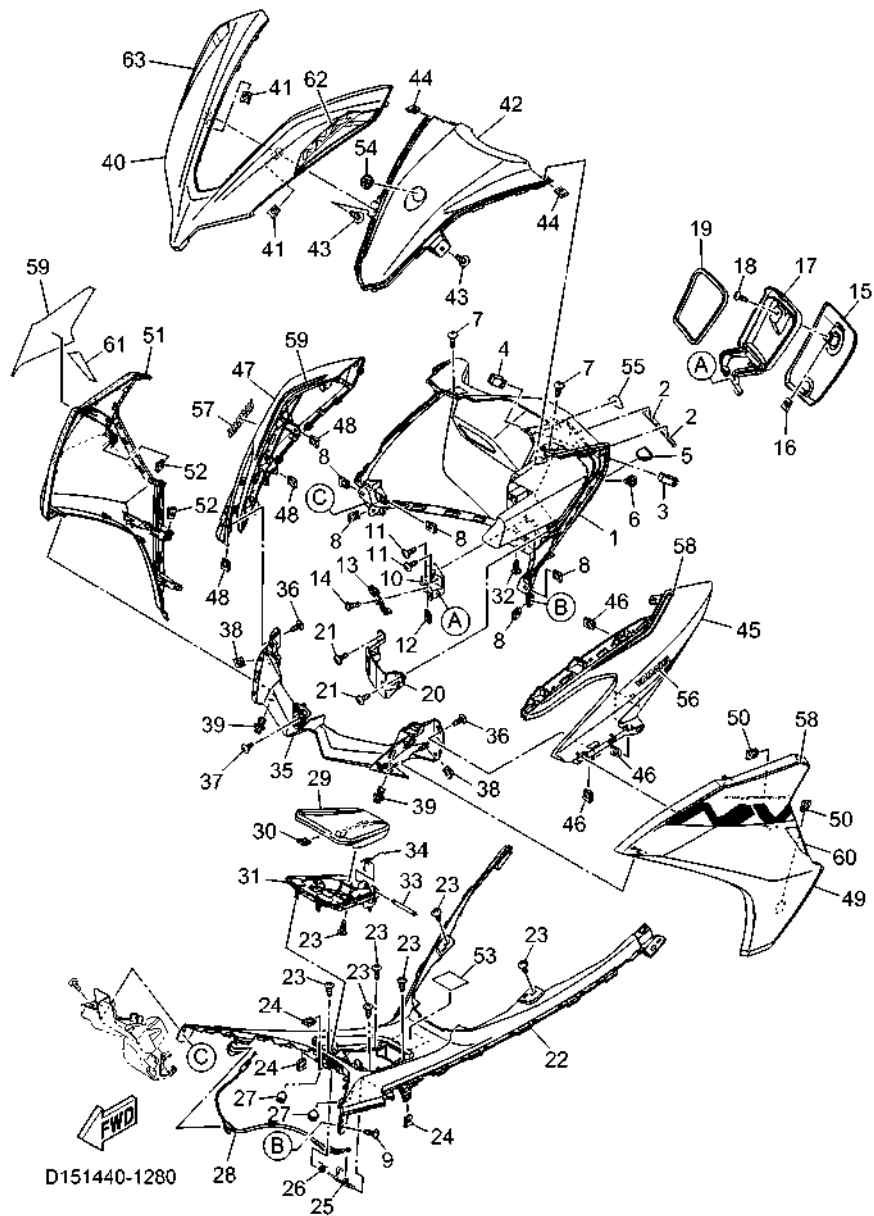
REF. NO.	PART NO.	DESCRIPTION	D151				REMARKS
27	D14-F171L-00	MOLE, SIDE COVER 1	1				
28	90269-06821	RIVET	3				
29	90183-05807	NUT, SPRING	4				
30	97707-50016	SCREW, TRUSS HEAD TAPPING	1				
31	D14-F171M-00	MOLE, SIDE COVER 2	1				
32	90269-06821	RIVET	3				
33	90183-05807	NUT, SPRING	4				
34	97707-50016	SCREW, TRUSS HEAD TAPPING	1				
35	BWP-F7483-00	MAT 1	1				
36	BWP-F7484-00	MAT 2	1				
37	D14-F7430-00	REAR FOOTREST ASSY 1	1				
38	D14-F7431-00	.FOOTREST, REAR 1	1				
39	D14-F7452-00	.BRACKET, FOOTREST 1	1				
40	90501-12743	.SPRING, COMPRESSION	1				
41	93501-04843	.BALL	1				
42	91701-08035	.PIN	1				
43	91401-25015	.PIN, COTTER	1				
44	95D32-08020	BOLT, FLANGE DEEP RECESS	2				
45	D14-F7440-00	REAR FOOTREST ASSY 2	1				
46	D14-F7441-00	.FOOTREST, REAR 2	1				
47	D14-F7462-00	.BRACKET, FOOTREST 2	1				
48	90501-12743	.SPRING, COMPRESSION	1				
49	93501-04843	.BALL	1				
50	91701-08035	.PIN	1				
51	91401-25015	.PIN, COTTER	1				
52	95D32-08020	BOLT, FLANGE DEEP RECESS	2				

**FIG. 28 LEG SHIELD**



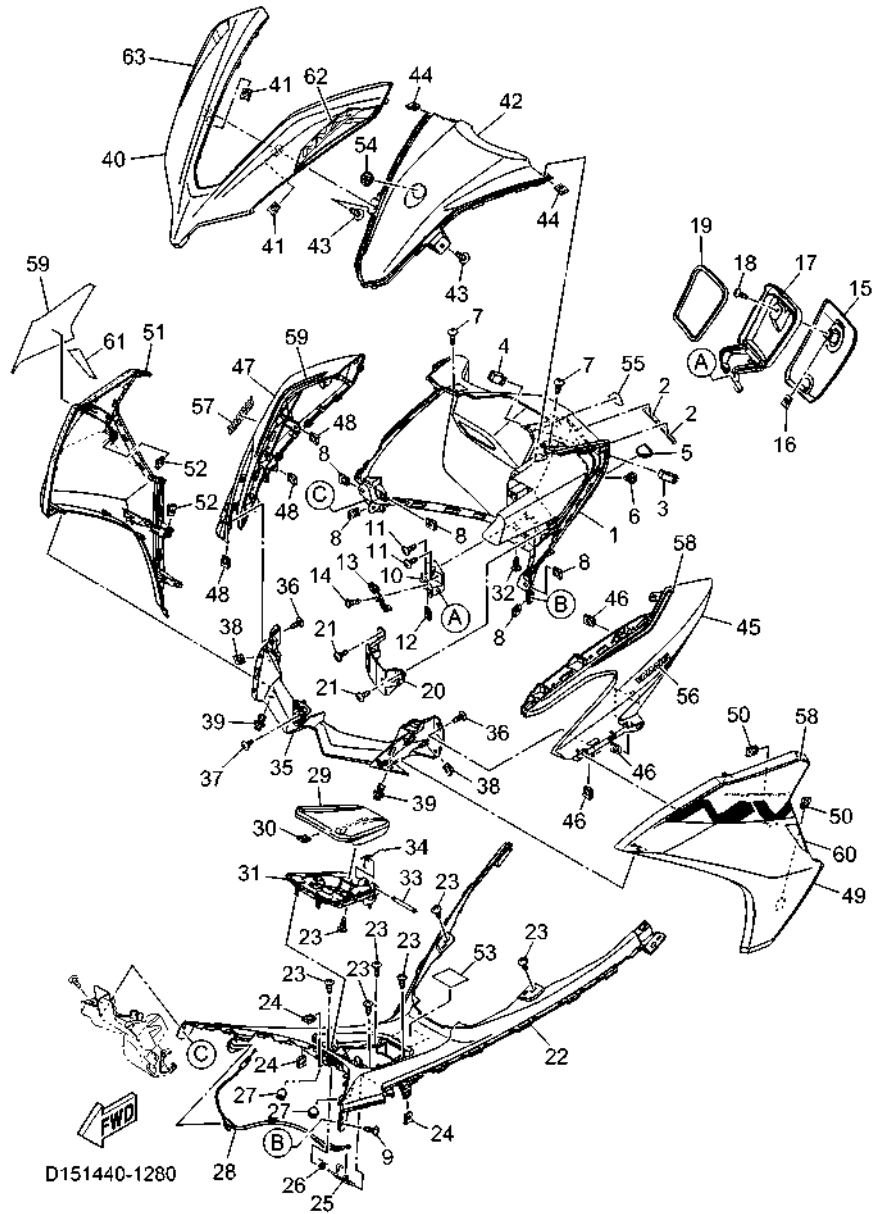
REF. NO.	PART NO.	DESCRIPTION	D151				REMARKS
1	D11-F8312-00	LEG SHIELD 2	1				
2	90520-03848	DAMPER, PLATE	2				
3	BBP-F4618-00	PLATE, LOCK 3	1				
4	BWP-F135F-00	COVER	1				
5	BBN-F8349-00	CAP	1				
6	90109-068B3	BOLT	1				
7	90167-05801	SCREW, TAPPING	2				
8	90183-05807	NUT, SPRING	5				
9	97707-50016	SCREW, TRUSS HEAD TAPPING	1				
10	D11-F8321-00	STAY 1	1				
11	90160-05012	SCREW, ROUND TAPPING	2				
12	90183-05807	NUT, SPRING	1				
13	BBN-F1796-00	HINGE	1				
14	97707-50016	SCREW, TRUSS HEAD TAPPING	1				
15	D11-F177E-00	LID	1				
16	90183-05807	NUT, SPRING	1				
17	D11-F8322-00	STAY 2	1				
18	97707-50016	SCREW, TRUSS HEAD TAPPING	1				
19	90520-06821	DAMPER, PLATE	1				
20	D11-F8365-00	COVER	1				
21	97707-50016	SCREW, TRUSS HEAD TAPPING	2				
22	D11-F842M-00	COVER 1	1				
23	97707-50016	SCREW, TRUSS HEAD TAPPING	7				
24	90183-05807	NUT, SPRING	3				
25	B6H-F131C-00	BAR LOCK	1				
26	B6H-F7456-00	SPRING, RETURN	1				
27	90338-07018	PLUG	2				

FIG. 28 LEG SHIELD



REF. NO.	PART NO.	DESCRIPTION	D151				REMARKS
28	D11-F4494-00	WIRE, PULL	1				
29	D11-F74A8-00	LID, FUEL	1				
30	90183-05807	NUT, SPRING	1				
31	D11-F846K-00	COVER, HINGE 1	1				
32	97707-50016	SCREW, TRUSS HEAD TAPPING	1				
33	B65-F818A-00	PIN	1				
34	BBN-F7426-00	SPRING, RETURN	1				
35	D11-F8311-00	LEG SHIELD 1	1				
36	97707-50016	SCREW, TRUSS HEAD TAPPING	2				
37	97702-50012	SCREW, TAPPING	1				
38	90183-05807	NUT, SPRING	2				
39	90269-06821	RIVET	2				
40	D14-F2865-00-P2	COVER, FRONT	1				UR FOR DPBMU
	D14-F2865-00-P3	COVER, FRONT	1				UR VVM2 FOR WM6
41	90183-05807	NUT, SPRING	2				
42	D14-F286F-00	COVER, FRONT 2	1				
43	97707-50016	SCREW, TRUSS HEAD TAPPING	2				
44	90183-05807	NUT, SPRING	2				
45	D14-F8351-00-P2	COWLING	1				UR S3 FOR DPBMU
	D14-F8351-00-P3	COWLING	1				UR SMX FOR WM6
46	90183-05807	NUT, SPRING	3				
47	D14-F8377-00-P2	COWLING	1				UR S3 FOR DPBMU
	D14-F8377-00-P3	COWLING	1				UR SMX FOR WM6
48	90183-05807	NUT, SPRING	3				
49	D14-F835U-00-P2	PANEL 1	1				UR FOR DPBMU
	D14-F835U-00-P3	PANEL 1	1				UR FOR WM6
50	90183-05807	NUT, SPRING	2				

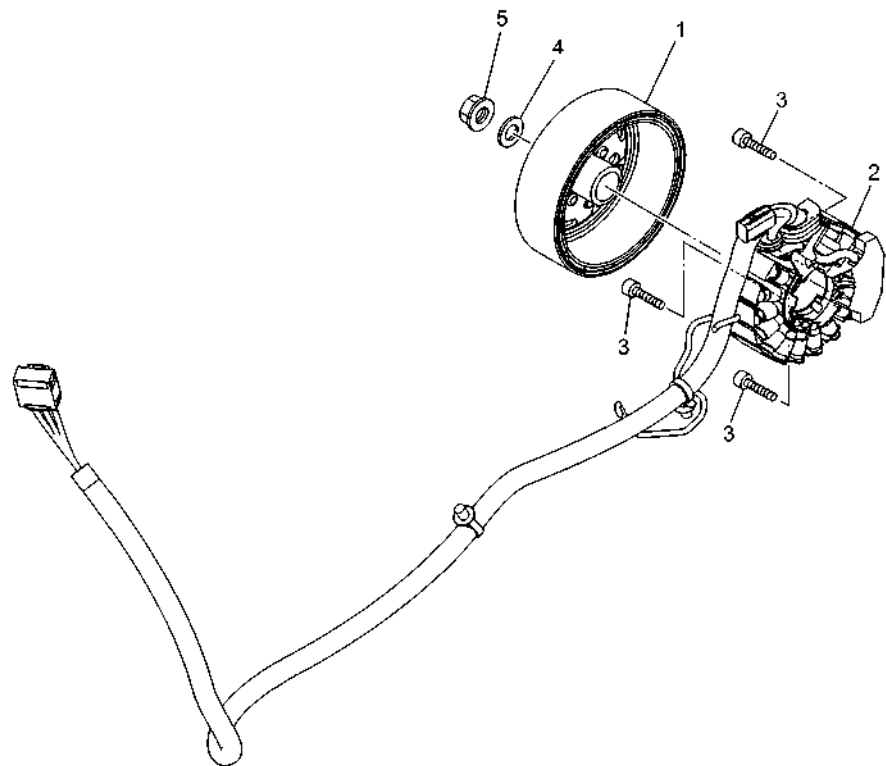
**FIG. 28 LEG SHIELD**



REF. NO.	PART NO.	DESCRIPTION	D151			REMARKS
51	D14-F835V-00-P2	PANEL 2	1			UR FOR DPBMU
	D14-F835V-00-P3	PANEL 2	1			UR FOR WM6
52	90183-05807	NUT, SPRING	2			
53	BG3-F1568-00	LABEL, WARNING	1			
54	5P2-F1737-00	EMBLEM	1			
55	BYB-F8368-00	EMBLEM	1			
56	D15-F153A-00	EMBLEM, YAMAHA	1			UR FOR DPBMU
	D15-F153A-10	EMBLEM, YAMAHA	1			UR FOR WM6
57	D15-F153A-00	EMBLEM, YAMAHA	1			UR FOR DPBMU
	D15-F153A-10	EMBLEM, YAMAHA	1			UR FOR WM6
58	D15-F8391-00	GRAPHIC 1	1			UR FOR DPBMU
	D15-F8391-10	GRAPHIC 1	1			UR FOR WM6
59	D15-F8392-00	GRAPHIC 2	1			UR FOR DPBMU
	D15-F8392-10	GRAPHIC 2	1			UR FOR WM6
60	D15-F8393-00	GRAPHIC 3	1			UR FOR DPBMU
	D15-F8393-10	GRAPHIC 3	1			UR FOR WM6
61	D15-F8394-00	GRAPHIC 4	1			UR FOR DPBMU
	D15-F8394-10	GRAPHIC 4	1			UR FOR WM6
62	D15-F834C-00	EMBLEM, 1	1			UR FOR DPBMU
	D15-F834C-10	EMBLEM, 1	1			UR FOR WM6
63	D15-F835C-00	EMBLEM 2	1			UR FOR DPBMU
	D15-F835C-10	EMBLEM 2	1			UR FOR WM6



**FIG. 29 GENERATOR**



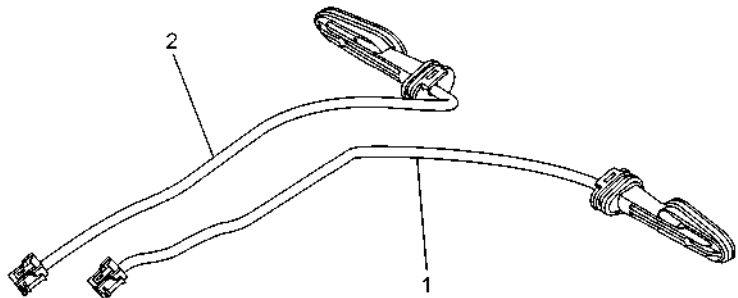
REF. NO.	PART NO.	DESCRIPTION	D151				REMARKS
1	BLS-H1450-00	ROTOR ASSY	1				
2	BWP-H1410-01	STATOR ASSY	1				
3	90110-06880	BOLT, HEXAGON SOCKET HEAD	3				
4	90201-12688	WASHER, PLATE	1				
5	90179-12004	NUT	1				



BWP1460-0300

**FIG. 30 FLASHER LIGHT**

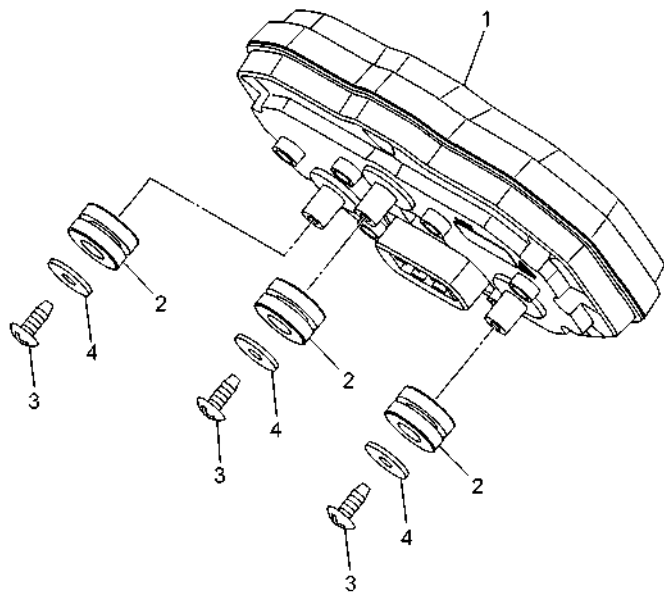
REF. NO.	PART NO.	DESCRIPTION	D151						REMARKS
1	D11-H330A-01	FLASHER LIGHT ASSY A	1						
2	D11-H330B-01	FLASHER LIGHT ASSY B	1						



BWP1460-0320

**FIG. 31 METER**

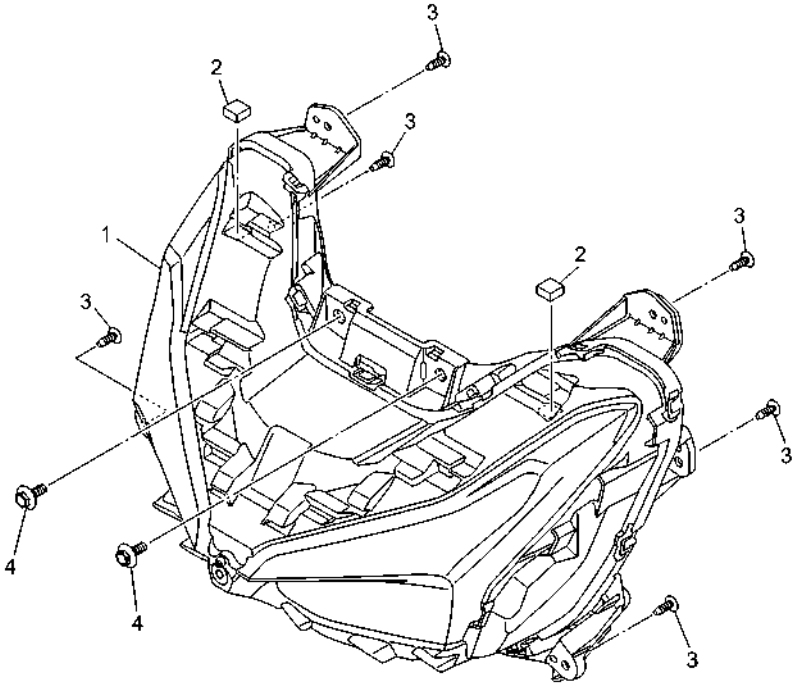
REF. NO.	PART NO.	DESCRIPTION	D151					REMARKS
1	D09-H3500-00	METER ASSY	1					
2	90480-14004	GROMMET	3					
3	97702-50014	SCREW, TAPPING	3					
4	90201-05036	WASHER, PLATE	3					
<hr/>								
<hr/>								
<hr/>								
<hr/>								
<hr/>								
<hr/>								
<hr/>								
<hr/>								
<hr/>								
<hr/>								
<hr/>								
<hr/>								
<hr/>								
<hr/>								
<hr/>								
<hr/>								



D091460-0330

FIG. 32 HEADLIGHT

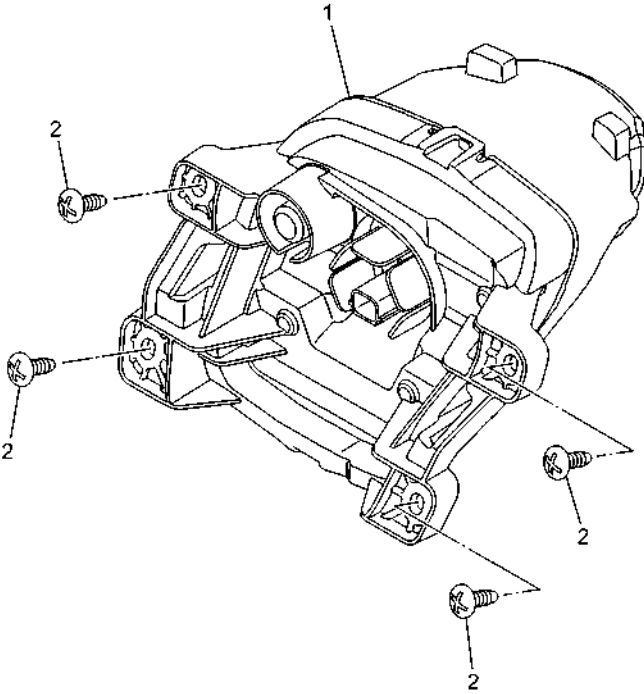
REF. NO.	PART NO.	DESCRIPTION	D151			REMARKS
1	BWP-H4300-00	HEADLIGHT ASSY	1			
2	90520-05817	DAMPER, PLATE	2			
3	97707-50016	SCREW, TRUSS HEAD TAPPING	6			
4	90109-068B5	BOLT	2			



 BWP1460-0340

**FIG. 33 TAILLIGHT**

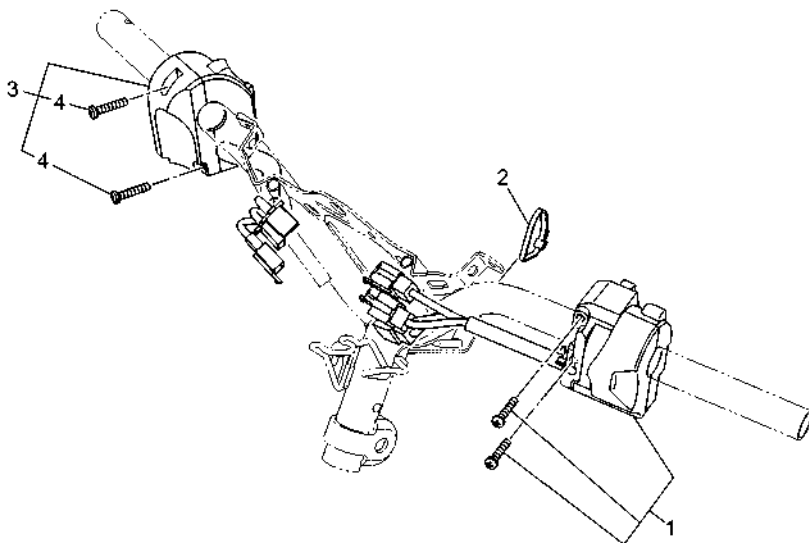
REF. NO.	PART NO.	DESCRIPTION	D151				REMARKS
1	BWP-H4710-00	TAILLIGHT UNIT ASSY	1				
2	97707-50016	SCREW, TRUSS HEAD TAPPING	4				



BWP1460-0350

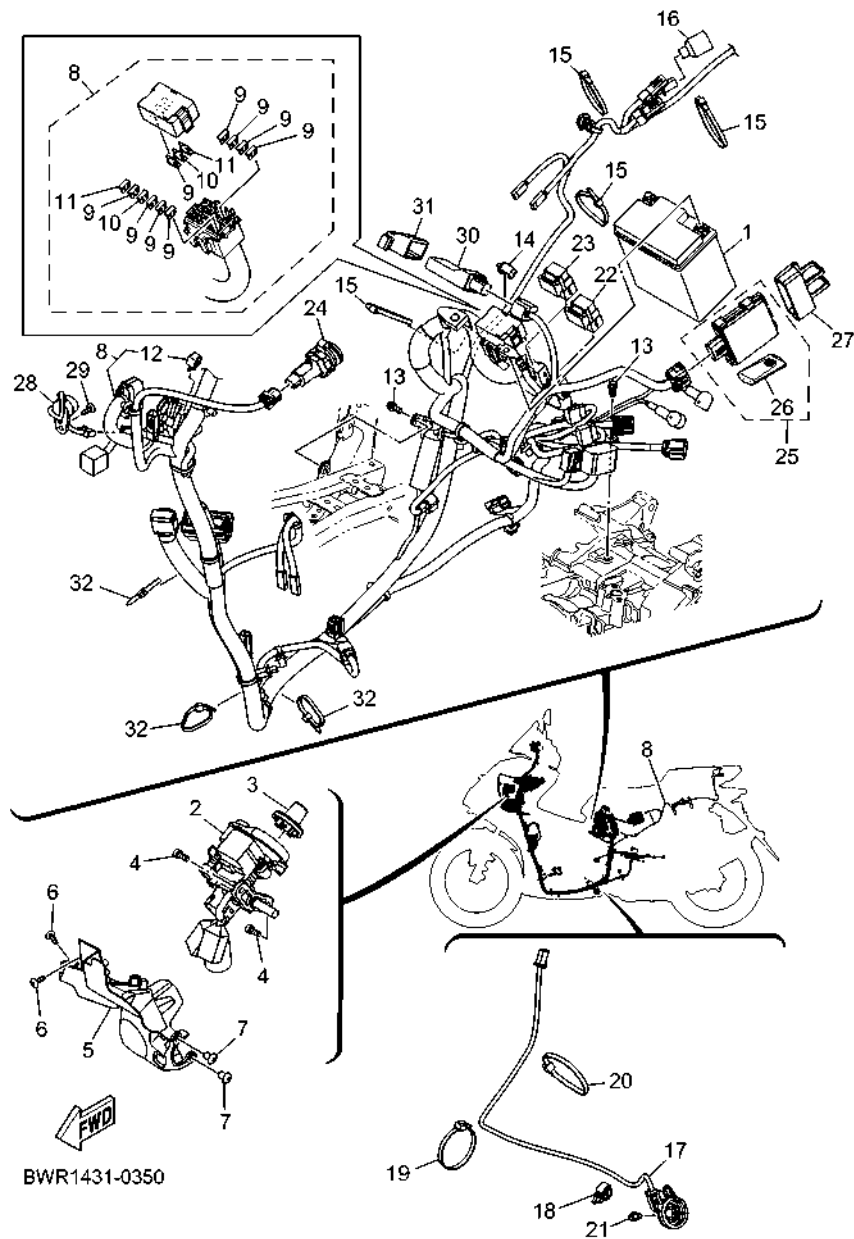
**FIG. 34 HANDLE SWITCH & LEVER**

REF. NO.	PART NO.	DESCRIPTION	D151				REMARKS
1	D12-H3972-00	SWITCH, HANDLE 4	1				
2	90464-45804	CLAMP	1				
3	D11-H3973-00	SWITCH, HANDLE 3	1				
4	98507-05025	.SCREW, PAN HEAD	2				
-----							
-----							
-----							
-----							
-----							
-----							
-----							
-----							
-----							
-----							

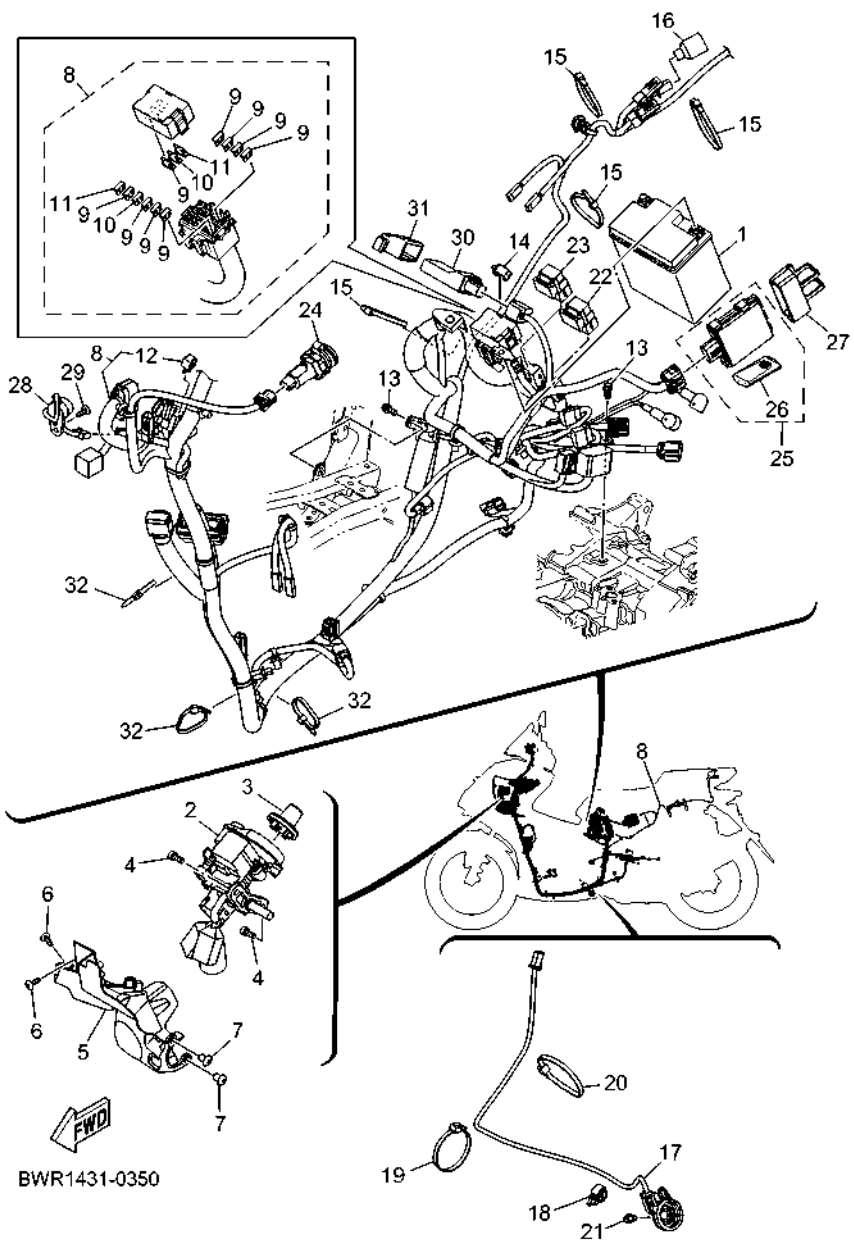


D121422-0340

FIG. 35 ELECTRICAL 1



REF. NO.	PART NO.	DESCRIPTION	D151				REMARKS
1	BBM-H2100-00	BATTERY ASSY (YUASA YTZ6V)	1				
2	BDL-H2501-02	MAIN SWITCH STEERING LOCK	1				
3	B5D-H276E-00	KNOB COMP.	1				
4	90111-06162	BOLT, HEXAGON SOCKET BUTTON	2				
5	D11-H2568-00	COVER, MAIN SWITCH	1				
6	97707-50016	SCREW, TRUSS HEAD TAPPING	2				
7	90269-06812	RIVET	2				
8	BWR-H2590-10	WIRE HARNESS ASSY	1				
9	D11-H2151-00	.FUSE(7.5A)	9				
10	D11-H2151-30	.FUSE(10A)	2				
11	D11-H2151-60	.FUSE(30A)	2				
12	3WP-81980-00	.DIODE ASSY	1				
13	95E32-06012	BOLT, FLANGE DEEP RECESS	2				
14	90464-13249	CLAMP	1				
15	90464-70800	CLAMP	4				
16	B63-H7229-00	BAND	1				
17	B65-H2566-02	SWITCH, SIDE STAND	1				
18	90464-13249	CLAMP	1				
19	90464-50800	CLAMP	1				
20	90464-65801	CLAMP	1				
21	90110-06888	BOLT, HEXAGON SOCKET HEAD	1				
22	BK6-H1950-00	RELAY ASSY	1				UR
	2PH-H1940-12	STARTER RELAY ASSY	1				UR
23	B3F-H1950-10	RELAY ASSY	1				UR
	B63-H1950-11	RELAY ASSY	1				UR
24	BLS-H21E0-00	USB ASSY	1				
25	BJJ-H6260-01	REMOTE CONTROL UNIT ASSY	1				

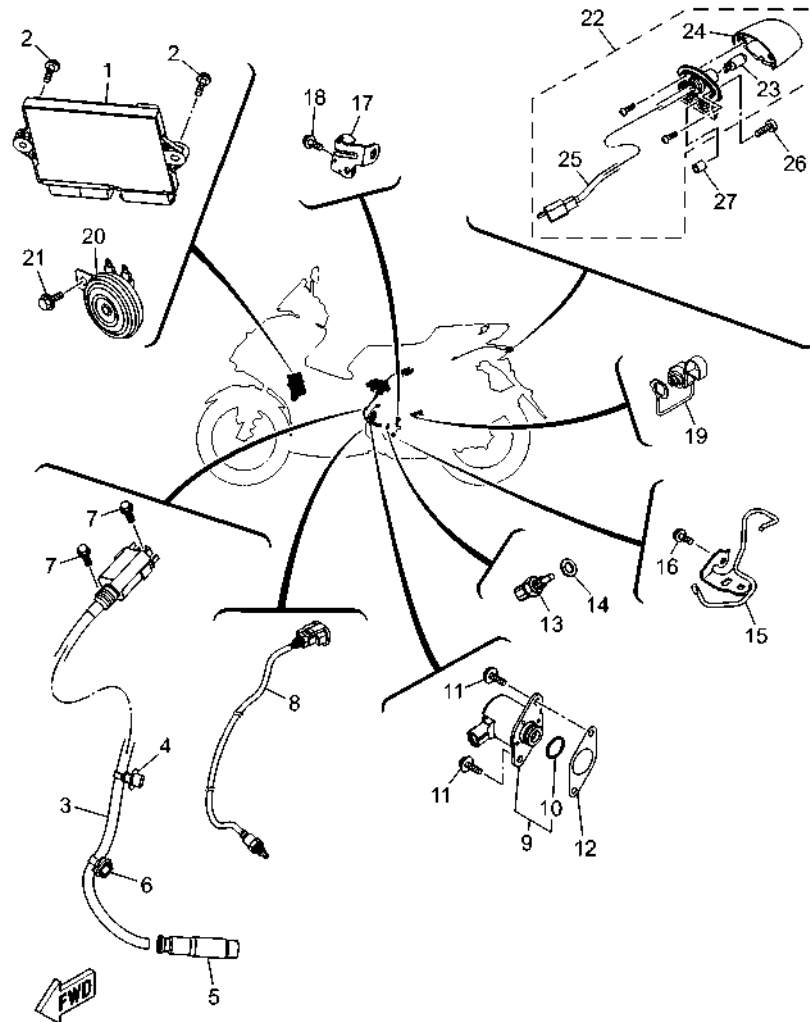


BWR1431-0350

FIG. 35 ELECTRICAL 1

REF. NO.	PART NO.	DESCRIPTION	D151	REMARKS
26	B2T-H6261-03	.XMTR. COMP.	1	
27	B63-H5546-00	BAND	1	
28	B3F-H3383-00	BUZZER	1	
29	97707-50016	SCREW, TRUSS HEAD TAPPING	1	
30	B6Y-H5810-12	COMMUNICATION CONT. UNIT ASSY	1	
31	BBP-H5546-00	BAND	1	
32	90464-36800	CLAMP	3	



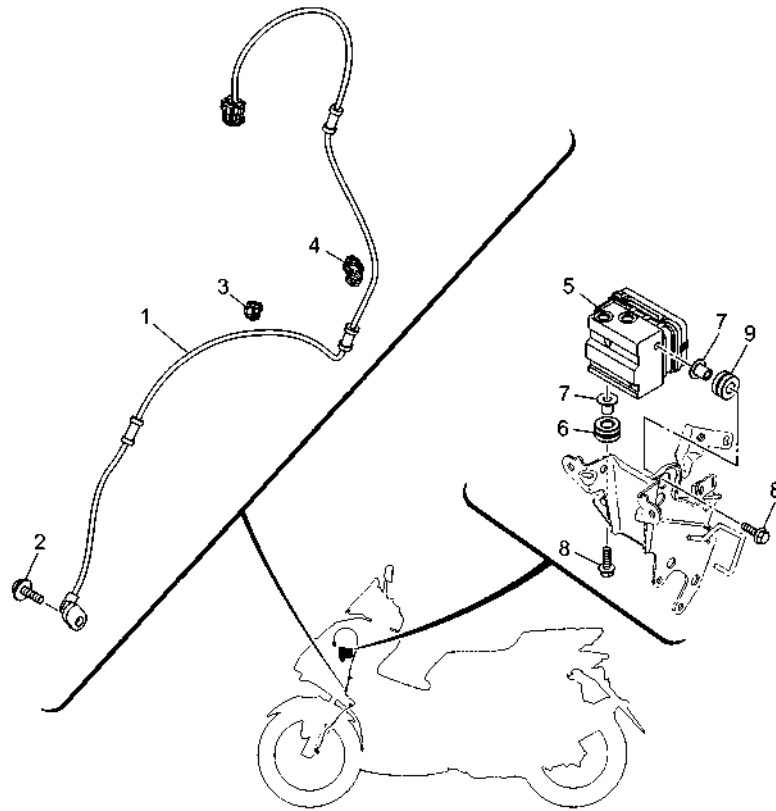


BWR1431-0360

FIG. 36 ELECTRICAL 2

REF. NO.	PART NO.	DESCRIPTION	D151				REMARKS
1	D56-H594A-00	STARTER GEN. CONT. UNIT ASSY	1				
2	95D32-06020	BOLT, FLANGE DEEP RECESS	2				
3	BWP-H2310-10	IGNITION COIL ASSY	1				
4	90464-14809	CLAMP	1				
5	BLS-H2370-00	PLUG CAP ASSY	1				
6	90464-25009	CLAMP	1				
7	97517-06520	BOLT, WITH WASHER	2				
8	BTF-H592A-10	SENSOR, OXYGEN	1				
9	BK6-H6110-10	SOLENOID	1				
10	BK6-H1847-00	.O-RING	1				
11	95D32-06016	BOLT, FLANGE DEEP RECESS	2				
12	B63-H1861-00	GASKET	1				
13	B7J-H3591-00	THERMO UNIT	1				
14	90430-10806	GASKET	1				
15	BVY-E5142-00	GUIDE 1	1				
16	95E37-06012	BOLT, FLANGE DEEP RECESS	1				
17	BBN-E5143-00	GUIDE	1				
18	95E37-06012	BOLT, FLANGE DEEP RECESS	1				
19	BBR-H816G-00	COVER CONNECTER	1				
20	BLS-H3371-00	HORN	1				
21	95D02-06012	BOLT, FLANGE DEEP RECESS	1				
22	D14-H4740-00	LICENSE LIGHT ASSY	1				
23	B17-H4744-00	.BULB (12V-5W)	1				
24	D14-H4743-00	.LENS, LICENCE LIGHT	1				
25	D14-H4547-00	.CORD, LICENSE LIGHT	1				
26	98907-04014	SCREW, BIND	1				
27	90445-05004	HOSE	1				

**FIG. 37 ELECTRICAL 3**



REF. NO.	PART NO.	DESCRIPTION	D151	REMARKS
1	B63-H5970-01	WHEEL SENSOR ASSY, FRONT	1	
2	95D37-06016	BOLT, FLANGE DEEP RECESS	1	
3	90464-12013	CLAMP	1	
4	90464-12816	CLAMP	1	
5	BWP-H5930-09	HYDRAULIC UNIT ASSY	1	
6	90480-14816	GROMMET	1	
7	90387-068N8	COLLAR	2	
8	95817-06020	BOLT, FLANGE	2	
9	90480-14004	GROMMET	1	

  
 D091460-0400



NUMERICAL INDEX

PART NO.	REF. NO.	PART NO.	REF. NO.	PART NO.	REF. NO.	PART NO.	REF. NO.	PART NO.	REF. NO.	PART NO.	REF. NO.
D14-F471K-00-P3	16 - 34	B63-F5887-00	14 - 21	D14-F7481-00	27 - 12	BBM-H2100-00	35 - 1	BJJ-H6260-01	35 - 25	90167-05801	16 - 21
D11-F4726-00	20 - 5	BWR-F5887-00	26 - 39	BWP-F7483-00	27 - 35	D12-H2129-00	20 - 16	B2T-H6261-03	35 - 26		25 - 21
2WB-F4727-00	20 - 4	3RW-F5889-00	26 - 7	BWP-F7484-00	27 - 36	D11-H2151-00	35 - 9	B63-H7229-00	35 - 16		28 - 7
D14-F472K-00	16 - 36	5YP-F5889-00	26 - 31	D14-F7488-00	27 - 19	D11-H2151-30	35 - 10	BBR-H816G-00	36 - 19	90170-05803	3 - 10
BWR-F4730-00	20 - 1	D11-F588G-00	17 - 8	D11-F74A8-00	28 - 29	D11-H2151-60	35 - 11	4C9-W0048-00	22 - 8		3 - 15
D11-F4737-00	20 - 9	2DP-F589F-00	26 - 33	D14-F8151-00	20 - 32	BLS-H21E0-00	35 - 24		24 - 8	90170-08811	1 - 16
D11-F473R-00	20 - 7	2BM-F5917-00	22 - 6	D14-F8153-00	20 - 31	BWP-H2310-10	36 - 3	B63-WE662-00	12 - 8	90170-12802	12 - 27
B63-F474A-10	20 - 24	5YP-F5917-00	24 - 6	B65-F818A-00	28 - 33	BLS-H2370-00	36 - 5	90105-088E3	14 - 16	90179-05804	25 - 24
B63-F474W-10	20 - 27	2BM-F5919-00	22 - 11	D11-F8311-00	28 - 35	BDL-H2501-02	35 - 2	90105-10283	14 - 12	90179-05849	25 - 24
BBN-F475M-00	20 - 3	5P0-F5919-01	24 - 11	D11-F8312-00	28 - 1	B6H-H2530-00	26 - 37	90105-108B0	25 - 3	90179-12004	29 - 5
1S8-F4768-00	20 - 23	2DP-F5920-00	22 - 13	D11-F8321-00	28 - 10	B65-H2566-02	35 - 17	90105-108C9	14 - 10	90179-12019	12 - 26
B63-F4780-00	20 - 21	2DP-F5920-50	24 - 13	D11-F8322-00	28 - 17	D11-H2568-00	35 - 5	90109-063F1	15 - 15	90179-25810	18 - 45
BBN-F478E-00	20 - 19	5YP-F5924-00	22 - 12	BBN-F8349-00	28 - 5	BWR-H2590-10	35 - 8	90109-06577	26 - 11	90183-04039	15 - 13
B65-F479D-00	20 - 30		24 - 12	D15-F834C-00	28 - 62	B5D-H276E-00	35 - 3	90109-068A4	15 - 5	90183-05807	15 - 12
B63-F482H-00	15 - 18	5YP-F5925-01	22 - 10	D15-F834C-10	28 - 62	D11-H330A-01	30 - 1		27 - 14		15 - 17
B65-F5168-00-33	21 - 1		24 - 10	D14-F8351-00-P2	28 - 45	D11-H330B-01	30 - 2		27 - 22		16 - 4
2DP-F517G-00	21 - 5	5YP-F5937-00	22 - 7	D14-F8351-00-P3	28 - 45	BLS-H3371-00	36 - 20		28 - 6		16 - 9
B63-F5181-00	21 - 10		24 - 7	D11-F8356-00	14 - 18	B3F-H3383-00	35 - 28	90109-068B5	15 - 4		16 - 12
BWP-F5338-00-33	23 - 1	D11-F6110-00	25 - 1	D11-F8358-00	14 - 25	D09-H3500-00	31 - 1		16 - 39		16 - 14
BWR-F5522-00	26 - 41	D14-F6143-00-P0	25 - 15	D15-F835C-00	28 - 63	D14-H3559-00-P2	25 - 25		16 - 42		16 - 25
2BM-F5802-00	22 - 4	D14-F6143-00-P1	25 - 15	D15-F835C-10	28 - 63	D14-H3559-00-P3	25 - 25		20 - 13		16 - 28
5P0-F5802-00	24 - 4	D14-F6145-00	25 - 18	D14-F835U-00-P2	28 - 49	B7J-H3591-00	36 - 13		27 - 15		20 - 12
5YP-F5803-50	22 - 5	4US-F6199-00	20 - 10	D14-F835U-00-P3	28 - 49	BWP-H3912-00	26 - 32		27 - 23		20 - 17
		B63-F61AA-00	25 - 22	D14-F835V-00-P2	28 - 51	2PV-H3922-00	26 - 9		32 - 4		25 - 2
B63-F5805-00	22 - 9	B92-F6240-00	25 - 6	D14-F835V-00-P3	28 - 51	D12-H3972-00	34 - 1	90109-068B9	27 - 6		25 - 16
B6H-F5805-00	24 - 9	1VP-F6241-00	25 - 5	D11-F8365-00	28 - 20	D11-H3973-00	34 - 3	90109-08232	22 - 2		27 - 18
1WD-F5807-00	26 - 3	B92-F6246-00	25 - 7	BYB-F8368-00	28 - 55	BKF-H3980-00	26 - 12		24 - 2		27 - 26
2DP-F5807-10	26 - 27	B70-F6280-00	25 - 8	5PV-F836B-00	25 - 27	BWP-H4300-00	32 - 1	90110-06440	4 - 14		27 - 29
2DP-F580A-00	26 - 26	B70-F6290-00	25 - 9	D14-F8377-00-P2	28 - 47	D14-H4547-00	36 - 25	90110-06846	8 - 18		27 - 33
B63-F580U-00	22 - 3	BBN-F6301-01	25 - 10	D14-F8377-00-P3	28 - 47	BWP-H4710-00	33 - 1	90110-06880	29 - 3		28 - 8
B6H-F580W-00	24 - 3	1S9-F6332-00	26 - 36	D15-F8391-00	28 - 58	D14-H4740-00	36 - 22	90110-06888	35 - 21		28 - 12
BWP-F581J-00	26 - 23	D12-F7111-00	27 - 1	D15-F8391-10	28 - 58	D14-H4743-00	36 - 24	90110-06894	1 - 24		28 - 16
5P0-F5827-00	24 - 14	BBN-F7112-00	27 - 2	D15-F8392-00	28 - 59	B17-H4744-00	36 - 23	90111-06162	35 - 4		28 - 24
2DP-F582U-00	22 - 1	54P-F7114-00	27 - 4	D15-F8392-10	28 - 59	2FC-H5111-00	17 - 16	90111-06860	9 - 3		28 - 30
2DP-F582W-00	24 - 1	5P2-F7114-00	14 - 14	D15-F8393-00	28 - 60		17 - 21	90119-06044	15 - 10		28 - 38
2DP-F5852-00	26 - 28	1DB-F7121-00	10 - 3	D15-F8393-10	28 - 60	BSM-H5111-00	17 - 16	90119-06096	15 - 16		28 - 41
B63-F5852-00	26 - 5	5VW-F7214-00	27 - 11	D15-F8394-00	28 - 61		17 - 21	90119-068D6	19 - 2		28 - 44
2ND-F5854-00	26 - 4	B63-F7217-00	27 - 8	D15-F8394-10	28 - 61	55D-H5130-00	15 - 24	90149-05030	21 - 6		28 - 46
5HV-F5854-10	26 - 29	B65-F7217-00	27 - 8	D11-F842M-00	28 - 22	B63-H5546-00	35 - 27	90149-05801	1 - 10		28 - 48
BCM-F5867-00	26 - 35	D11-F7311-00	27 - 7	D11-F846K-00	28 - 31	BBP-H5546-00	35 - 31	90149-08804	17 - 18		28 - 50
5TL-F5867-11	26 - 8	BBN-F7426-00	28 - 34	BWP-H1410-01	29 - 2	B65-H5752-00	19 - 8		17 - 23		28 - 52
B63-F5870-00	26 - 2	D14-F7430-00	27 - 37	BLS-H1450-00	29 - 1	B63-H5801-02	8 - 16		17 - 25	90183-06800	15 - 11
BWP-F5873-00	26 - 15	D14-F7431-00	27 - 38	BK6-H1847-00	36 - 10	B6Y-H5810-12	35 - 30	90149-10805	22 - 14		15 - 22
BWP-F5874-00	26 - 19	D14-F7440-00	27 - 45	B63-H1861-00	36 - 12	BTf-H592A-10	36 - 8	90150-05023	25 - 23	90183-06815	25 - 20
D11-F5875-00	18 - 50	D14-F7441-00	27 - 46	2PH-H1940-12	35 - 22	BWP-H5930-09	37 - 5	90160-05012	28 - 11	90183-06818	15 - 3
D11-F5876-00	18 - 52	D14-F7452-00	27 - 39	BK6-H1950-00	35 - 22	D56-H594A-00	36 - 1	90167-05801	16 - 2	90185-10011	25 - 4
B8A-F587A-00	14 - 23	B6H-F7456-00	28 - 26	B3F-H1950-10	35 - 23	B63-H5970-01	37 - 1		16 - 7	90185-16800	23 - 4
D11-F5886-00	17 - 11	D14-F7462-00	27 - 47	B63-H1950-11	35 - 23	BK6-H6110-10	36 - 9		16 - 17	90201-05036	31 - 4

NUMERICAL INDEX

PART NO.	REF. NO.	PART NO.	REF. NO.	PART NO.	REF. NO.	PART NO.	REF. NO.	PART NO.	REF. NO.	PART NO.	REF. NO.
90201-10118	26 - 18	90430-12803	10 - 11	90520-03848	28 - 2	93306-255X5	13 - 7	95D32-08020	27 - 44	97707-50016	27 - 30
	26 - 22	90445-05004	36 - 27	90520-04806	20 - 8	93306-300YF	21 - 4		27 - 52		27 - 34
	26 - 25	90450-43805	8 - 33	90520-05817	32 - 2	93306-302YP	13 - 2	95D32-08035	10 - 12		28 - 9
90201-12688	29 - 4	90464-07805	16 - 48	90520-06801	14 - 4	93306-303YT	13 - 6	95D32-10045	9 - 6		28 - 14
90201-12837	12 - 25	90464-07807	25 - 14	90520-06821	28 - 19	93306-303YV	17 - 4	95D32-10060	9 - 7		28 - 18
90201-15828	12 - 31	90464-12013	37 - 3	90520-08803	14 - 3	93306-351Y5	13 - 12		17 - 10		28 - 21
90201-16819	12 - 24	90464-12816	20 - 20	90520-10851	11 - 18	93310-528YK	2 - 3	95D37-06016	17 - 7		28 - 23
90202-26142	18 - 46		37 - 4	90520-10853	6 - 22	93450-16115	2 - 8		37 - 2		28 - 32
90269-06812	16 - 33	90464-13249	35 - 14	90520-10855	6 - 23	93501-04843	27 - 41	95E32-06010	1 - 4		28 - 36
	35 - 7		35 - 18		11 - 23		27 - 49		1 - 27		28 - 43
90269-06821	15 - 7	90464-14002	19 - 16	90520-10856	11 - 16	93900-00817	21 - 8		20 - 22		32 - 3
	16 - 35	90464-14809	36 - 4	90520-15012	14 - 19		23 - 3	95E32-06012	35 - 13		33 - 2
	25 - 17	90464-16006	17 - 13	90520-15816	8 - 32	94111-14804	21 - 7	95E32-06014	3 - 19		35 - 6
	27 - 16		25 - 13	90520-20825	16 - 37	94114-14801	23 - 2	95E32-06020	6 - 3		35 - 29
	27 - 24	90464-18808	26 - 1	90520-40800	11 - 21	94568-A8096	4 - 7		6 - 26	97707-50025	8 - 25
	27 - 28	90464-25009	36 - 6	90520-40801	11 - 17	94700-00415	1 - 20		10 - 22	98502-06012	8 - 13
	27 - 32	90464-36800	35 - 32	90520-50801	11 - 19	95022-06020	15 - 21	95E32-06025	5 - 12	98507-05025	34 - 4
	28 - 39	90464-45804	34 - 2	91312-05010	25 - 12	95027-06020	5 - 8	95E32-06030	1 - 11	98707-04012	26 - 30
90269-08010	16 - 18	90464-50800	35 - 19	91312-05016	3 - 17	95302-08600	17 - 19		10 - 23	98907-04014	36 - 26
	16 - 22	90464-65801	35 - 20	91317-06025	26 - 13		17 - 24	95E32-06035	11 - 4	99002-09600	27 - 3
90280-03017	2 - 5	90464-70800	35 - 15	91332-05010	19 - 11	95602-06100	26 - 10	95E32-06045	5 - 13	99009-08400	5 - 6
90338-07018	28 - 27	90467-08003	16 - 47	91332-06025	8 - 3		26 - 34	95E32-06050	6 - 24	99009-25400	13 - 5
90340-12813	1 - 3	90467-10008	10 - 31	91401-25015	27 - 43	95602-08200	14 - 17	95E32-06060	10 - 7	99009-35700	12 - 30
90340-12816	10 - 10	90467-11106	11 - 7		27 - 51	95602-10200	14 - 11	95E32-06110	10 - 8	99480-03012	10 - 2
90380-10800	12 - 29	90467-11825	8 - 35	91701-08035	27 - 42		14 - 13	95E32-08035	10 - 28	99530-08012	1 - 12
90387-068N8	37 - 7		10 - 32		27 - 50		21 - 11	95E32-08045	10 - 27		5 - 10
90387-08821	14 - 15	90467-12052	8 - 36	92012-05016	25 - 11		27 - 9	95E37-06012	19 - 15	99530-10114	1 - 22
90387-08823	6 - 11	90467-12809	8 - 28	92012-05025	7 - 2	95612-08618	1 - 6		36 - 16		1 - 23
90387-08840	20 - 26	90467-19803	6 - 15	92012-06010	14 - 22	95702-05500	17 - 17		36 - 18		10 - 6
	20 - 29		6 - 16		14 - 24		17 - 22	97517-06520	36 - 7		10 - 21
90387-10277	21 - 9	90467-20806	6 - 14	92012-08012	14 - 20	95702-06500	20 - 6	97602-04312	26 - 14		10 - 26
90387-10848	21 - 2	90480-01559	27 - 13	93102-08800	1 - 14	95702-08500	9 - 5		26 - 38		11 - 3
90387-10857	14 - 8		27 - 21	93102-20815	13 - 11	95812-10030	24 - 15	97702-50012	28 - 37		
90387-17807	17 - 5	90480-14004	31 - 2	93102-22829	10 - 9	95817-06020	37 - 8	97702-50014	31 - 3		
90387-17808	17 - 9		37 - 9	93102-24802	10 - 19	95D02-06012	18 - 51	97707-50016	15 - 8		
90388-08803	17 - 2	90480-14808	16 - 43	93102-32807	13 - 8		26 - 40		16 - 3		
90388-10808	10 - 4	90480-14816	37 - 6	93106-20816	21 - 3		36 - 21		16 - 8		
90388-10818	14 - 7	90480-14833	6 - 12	93106-28801	17 - 3	95D07-06012	18 - 53		16 - 16		
90401-10015	26 - 17	90501-12743	27 - 40	93210-09807	4 - 2	95D32-06010	14 - 26		16 - 20		
	26 - 21		27 - 48	93210-14814	10 - 17	95D32-06012	17 - 12		16 - 24		
90401-10812	26 - 16	90501-16004	7 - 5	93210-19809	5 - 14	95D32-06016	6 - 28		16 - 27		
	26 - 20	90506-20818	27 - 10	93210-29800	7 - 6		36 - 11		16 - 32		
	26 - 24	90506-40804	27 - 5	93210-39803	5 - 11	95D32-06020	36 - 2		16 - 38		
90430-06803	1 - 5	90520-02826	19 - 4	93211-28800	10 - 20	95D32-06025	20 - 25		20 - 14		
	1 - 28	90520-02829	14 - 2	93300-608X0	5 - 7		20 - 28		20 - 18		
	5 - 9		16 - 41	93306-001X3	4 - 3	95D32-06030	6 - 13		25 - 19		
90430-08804	10 - 13	90520-03802	16 - 5	93306-252YB	12 - 28		8 - 10		27 - 17		
90430-10806	36 - 14		16 - 10	93306-254Y2	13 - 10		8 - 31		27 - 25		