

PARTS CATALOGUE

FEBRUARY 2018



LNS125 (BF42) MALAYSIA EGO SOLARIZ

LNS125
PARTS CATALOGUE
©2018 by Yamaha Motor Co., Ltd.
1st edition, January 2018
All rights reserved.
Any reprinting or unauthorized use
without the written permission of
Yamaha Motor Co., Ltd.
is expressly prohibited.
Printed in Japan.

FOREWORD

This Parts Catalogue is related to the parts for the model(s) on the cover page. When you are ordering replacement parts, please refer to this Parts Catalogue and quote both part numbers and part names correctly.

1. Modifications or additions which have been made after the issue of the Parts Catalogue will be announced in the Parts News.
It is advisable that you make the necessary corrections to the Parts Catalogue according to the Parts News.

2. Abbreviations

The following abbreviations are used in this Parts Catalogue.

“UR” Use specified parts number.

“UN” Use as many as needed.

“AP” Alternate Parts

“LM” Locally Made (Parts need to be ordered locally)

“F#” Frame No. (Applicable machine No.)

“O/S” Over Size

3. The number of components for assembly

- Parts, which are to be supplied in an assembly, are listed with a dot (.) in front of the part name as shown below.
- The numeral appearing to the right of each component part indicates the quantity of parts for each assembly unit.

PART NO.	DESCRIPTION	Q'TY	REMARKS
2F5-83310-60	FRONT FLASHER LIGHT ASSY	2	
115-83311-60	.BULB (6V-18W)	1	

4. Applicable colours of graphics are represented in the “REMARKS” as shown below.

PART NO.	DESCRIPTION	Q'TY	REMARKS
2N4-24110-00-X5	FUEL TANK COMP.	2	MXR
3J1-24240-10	.GRAPHIC, FUEL TANK	1	FOR MXR

5. Note that the illustrations for reference in finding parts numbers are not to be used for assembling. When assembling, please use the applicable service manual.

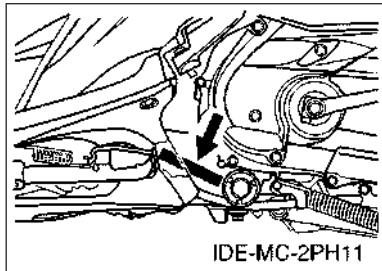
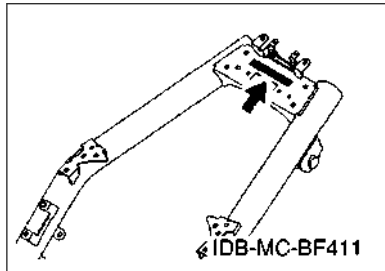
6. The asterisk (*) before a reference number indicates modified items after the first edition.

FOREWORD

7. Applicable Serial No.

Frame Serial No.

Engine Serial No.



8. Applicable Colour Code (The (*) mark shows Model colour.)

Abbreviation	Colour Name	Colour Code
DNPM1(*)	DARK GRAYISH PURPLE METALLIC 1	0740
MC1(*)	MAGENTA CANDY 1	1175
RM7(*)	RED METALLIC 7	1218
S3	SILVER 3	0791
SMX	BLACK METALLIC X	0903
VPBC5(*)	VIVID PURPLISH BLUE COCKTAIL 5	1177
WM6	WHITE METALLIC 6	1124
YB	YAMAHA BLACK	0033

9. Applicable Starting Serial No.

Frame Serial No.

Serial No.	Name Of Q'ty Column	Model Code

Engine Serial No.

Serial No.	Name Of Q'ty Column	Model Code

CONTENTS

ENGINE

CYLINDER.....	1
CRANKSHAFT & PISTON.....	2
VALVE.....	3
CAMSHAFT & CHAIN.....	4
AIR SHROUD & FAN.....	5
OIL PUMP.....	6
INTAKE.....	7
EXHAUST.....	9
CRANKCASE.....	10
CRANKCASE COVER 1.....	12
STARTER.....	13
CLUTCH.....	14
TRANSMISSION.....	16

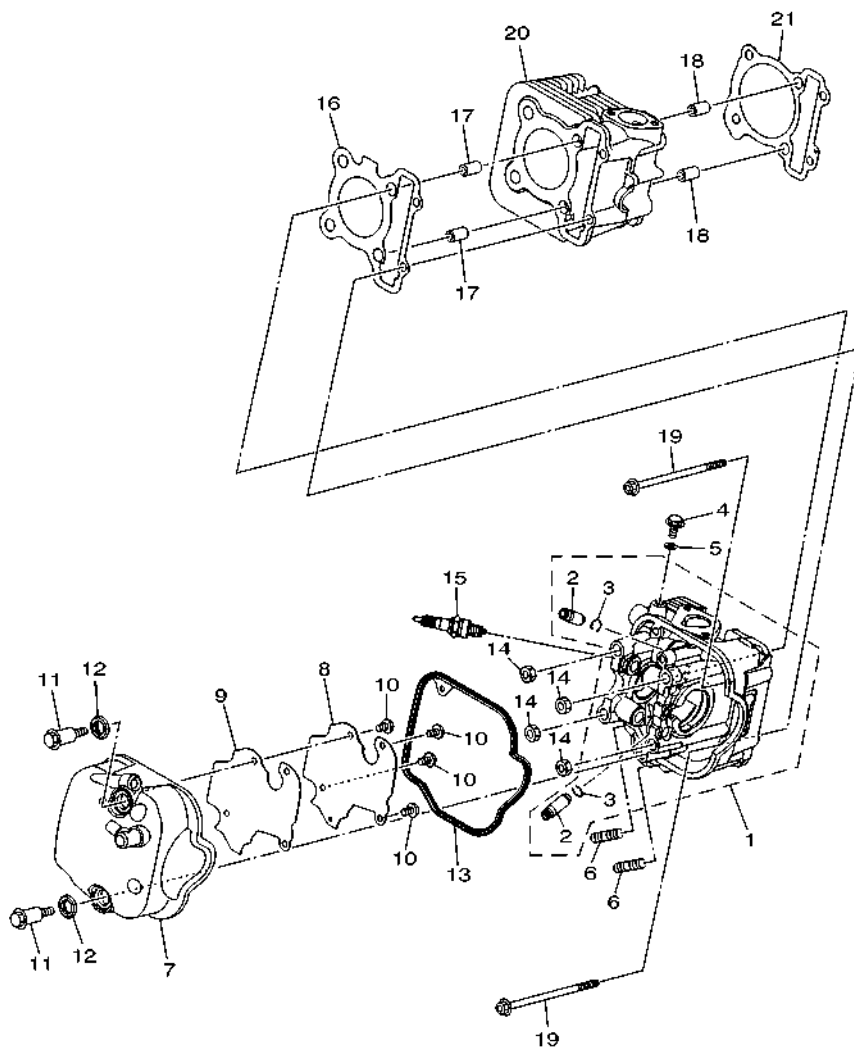
CHASSIS

FRAME.....	17
FENDER.....	18
SIDE COVER.....	19
REAR ARM & SUSPENSION.....	21
STEERING.....	22
FUEL TANK.....	24
SEAT.....	25
FRONT WHEEL.....	26
FRONT BRAKE CALIPER.....	27
REAR WHEEL.....	28
STEERING HANDLE & CABLE.....	29
FRONT MASTER CYLINDER.....	31
STAND & FOOTREST.....	32
LEG SHIELD.....	34
GENERATOR.....	36
STARTING MOTOR.....	37
FLASHER LIGHT.....	38
METER.....	39
HEADLIGHT.....	40
TAILLIGHT.....	41
HANDLE SWITCH & LEVER.....	42
ELECTRICAL 1.....	43
ELECTRICAL 2.....	44

INDEX

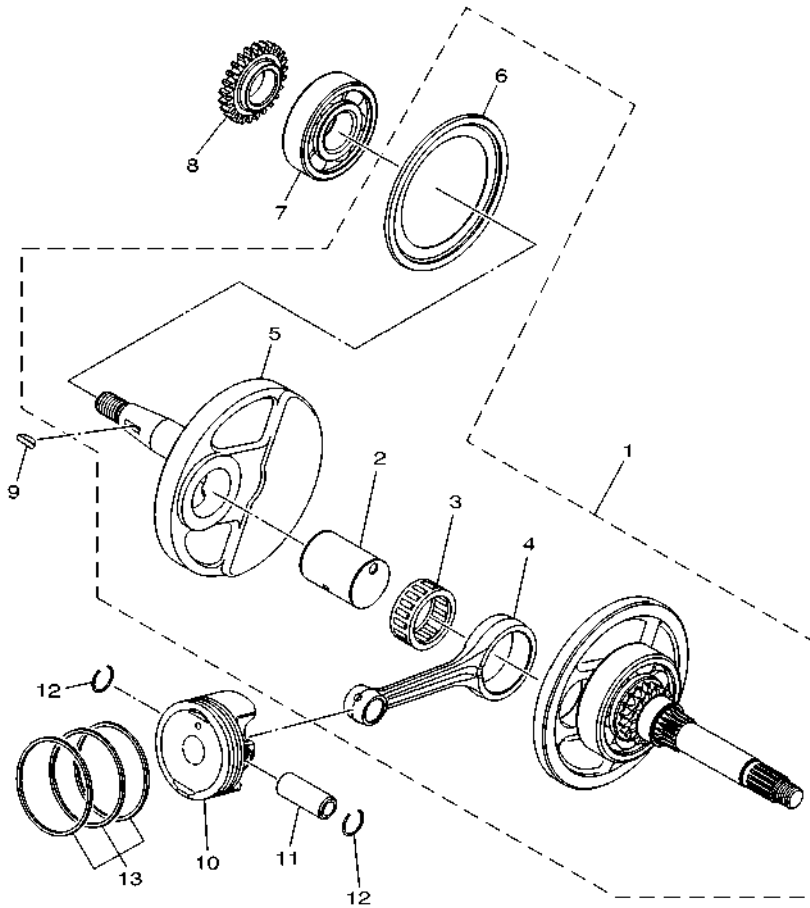
NUMERICAL INDEX.....	45
----------------------	----

FIG. 1 CYLINDER



2SX4460-R010

REF. NO.	PART NO.	DESCRIPTION	BF#2				REMARKS
1	B92-E1102-00	CYLINDER HEAD ASSY	1				
2	1DR-E1133-10	.GUIDE, VALVE 1	2				
3	93440-10153	.CIRCLIP	2				
4	95E32-06010	BOLT, FLANGE DEEP RECESS	1				
5	90430-06803	GASKET	1				
6	95612-08618	BOLT, STUD	2				
7	2PH-E1191-00	COVER, CYLINDER HEAD 1	1				
8	2PH-E1165-00	PLATE, BREATHER	1				
9	2PH-E1169-00	GASKET, BREATHER COVER	1				
10	90149-05801	SCREW	4				
11	2PH-E119E-10	BOLT, COVER HEAD	2				
12	2BM-E111G-00	RUBBER, MOUNT 1	2				
13	2BM-E1193-00	GASKET, HEAD COVER 1	1				
14	95302-08600	NUT, HEXAGON	4				
15	94700-00372	PLUG, SPARK (NGK CR6HSA)	1				
16	2BL-E1181-00	GASKET, CYLINDER HEAD 1	1				
17	91810-14809	PIN, DOWEL	2				
18	91810-14809	PIN, DOWEL	2				
19	90110-06868	BOLT, HEXAGON SOCKET HEAD	2				
20	2PH-E1311-10	CYLINDER 1	1				
21	2PH-E1351-10	GASKET, CYLINDER	1				



FWD
BJ81460-R020

FIG. 2 CRANKSHAFT & PISTON

REF. NO.	PART NO.	DESCRIPTION	BF42				REMARKS
1	2PH-E1400-31	CRANKSHAFT ASSY	1				
2	2BM-E1681-10	.PIN, CRANK 1	1				
3	93310-528YP	.BEARING	1				
4	2PH-E1651-20	.ROD, CONNECTING	1				
5	2PH-E1422-10	.CRANK 2	1				
6	5LW-E3452-00	.COVER, ROTOR FILTER	1				
7	93306-372X5	BEARING	1				
8	2BM-E3324-10	GEAR, PUMP DRIVE	1				
9	90280-03017	KEY, WOODRUFF	1				
10	2PH-E1631-00	PISTON (STD)	1				
11	2PH-E1633-00	PIN, PISTON	1				
12	93450-14088	CIRCLIP	2				
13	2PH-E1603-10	PISTON RING SET (STD)	1				

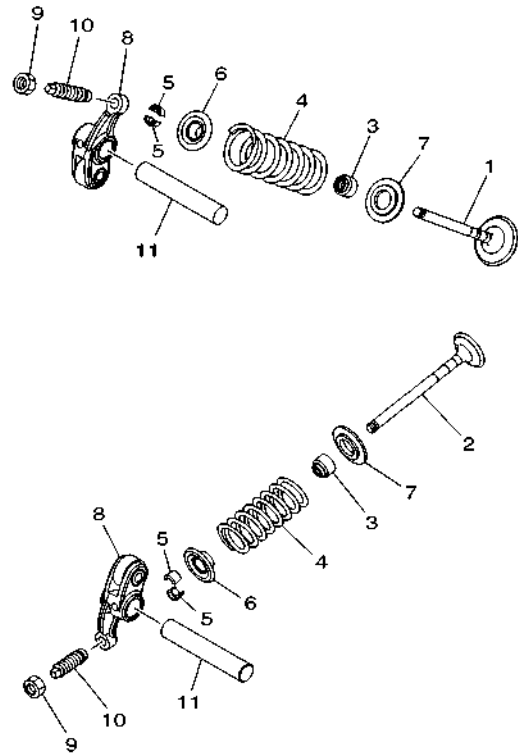


FIG. 3 VALVE

REF. NO.	PART NO.	DESCRIPTION	BF42				REMARKS
1	2PH-E2111-00	VALVE, INTAKE	1				
2	2PH-E2121-10	VALVE, EXHAUST	1				
3	54P-E2119-00	SEAL, VALVE STEM	2				
4	54P-E2113-00	SPRING, VALVE INNER	2				
5	5TL-E2118-00	LOCK, VALVE SPRING RETAINER	4				
6	54P-E2117-00	RETAINER, VALVE SPRING	2				UR
	1KP-E2117-00	RETAINER, VALVE SPRING	2				UR
7	2PH-E2126-00	SEAT, VALVE SPRING 2	2				
8	2PH-E2151-00	ARM, VALVE ROCKER	2				
9	90170-05803	NUT	2				
10	33S-E2159-10	SCREW, VALVE ADJUSTING	2				UR
	33S-E2159-01	SCREW, VALVE ADJUSTING	2				UR
11	2PH-E2146-00	SHAFT, ROCKER	2				



2BM1422-P030

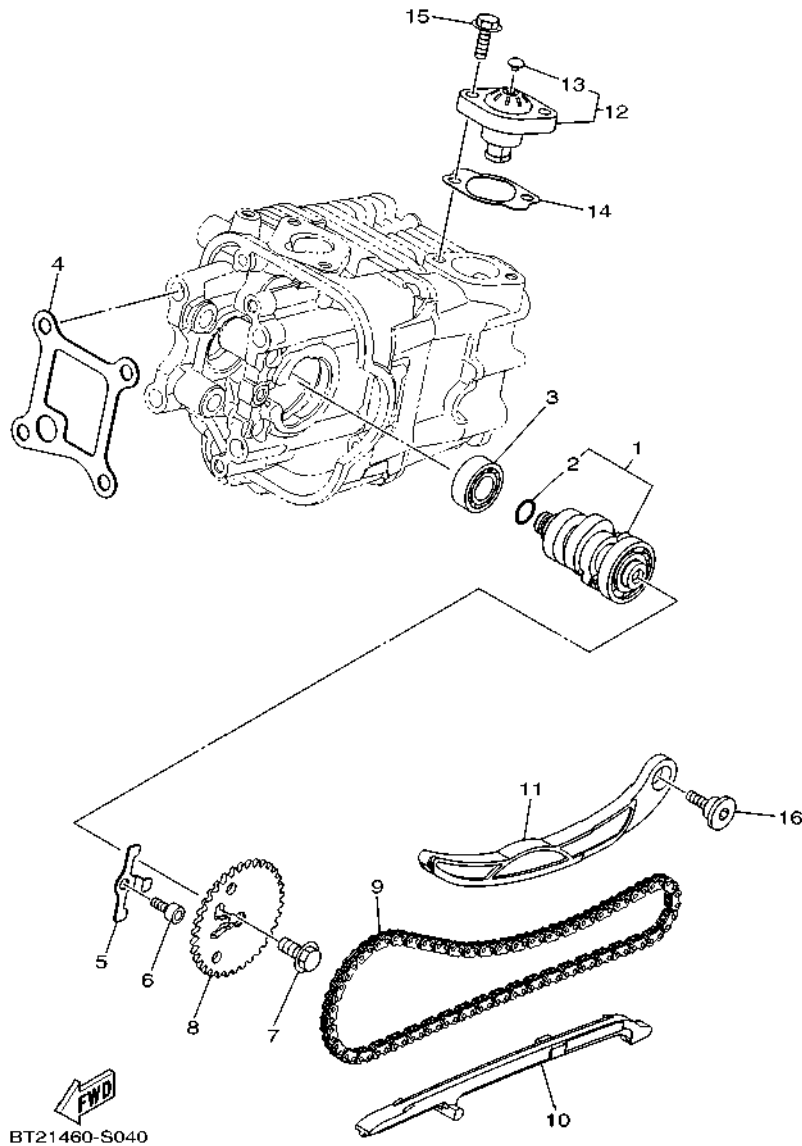
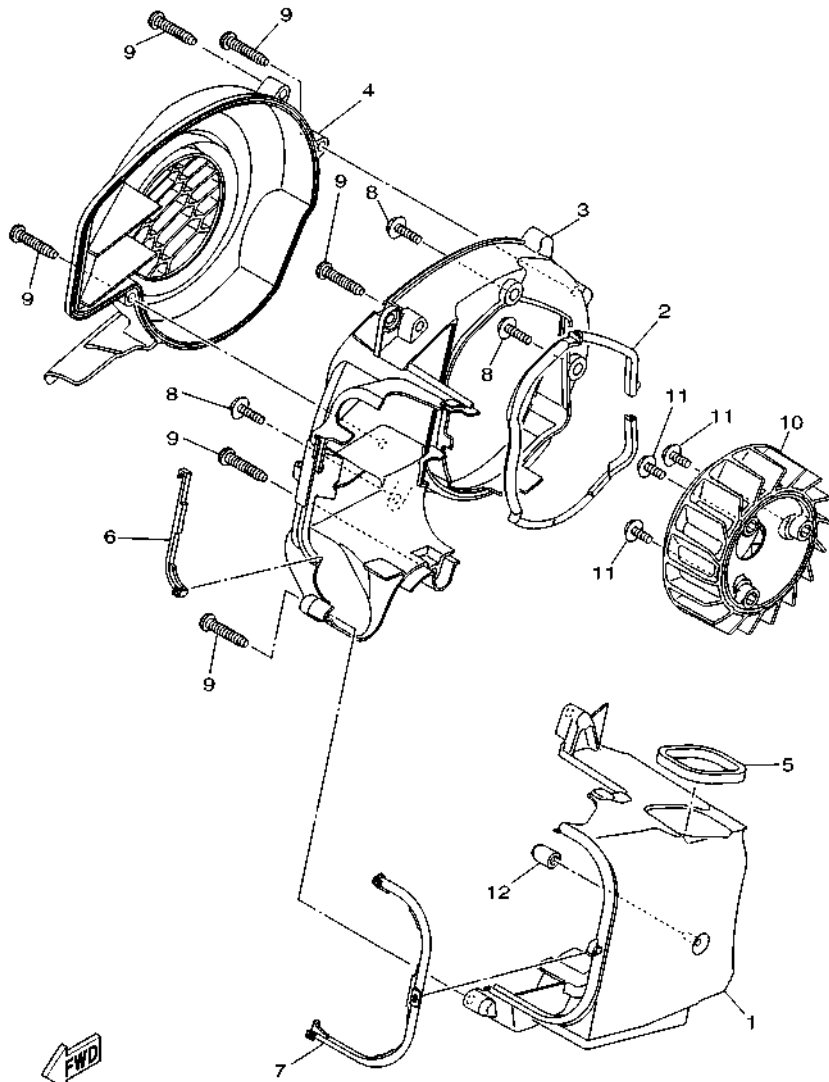


FIG. 4 CAMSHAFT & CHAIN

REF. NO.	PART NO.	DESCRIPTION	BF42				REMARKS
1	2PH-E2170-00	CAMSHAFT ASSY 1	1				
2	93210-09806	.O-RING	1				
3	93306-001YE	BEARING	1				UR
	93306-001X9	BEARING	1				UR
4	2PH-E111F-00	PLATE	1				
5	2PH-E112F-00	PLATE 2	1				
6	91312-06012	BOLT, HEXAGON SOCKET HEAD	1				
7	90105-07801	BOLT, FLANGE	1				
8	2PH-E2176-01	SPROCKET, CAM CHAIN (34T)	1				
9	94568-J7092	CHAIN	1				
10	54P-E2231-00	GUIDE, STOPPER 1	1				
11	2PH-E2241-00	GUIDE, STOPPER 2	1				
12	2BM-E2210-10	TENSIONER ASSY, CAM CHAIN	1				UR
	2BM-E2210-20	TENSIONER ASSY, CAM CHAIN	1				UR
13	5MX-E2222-00	.PLUG	1				
14	2PH-E2213-10	GASKET, TENSIONER CASE	1				
15	95E32-06020	BOLT, FLANGE DEEP RECESS	2				
16	54P-E2228-00	BOLT	1				UR
	52B-E2228-00	BOLT	1				UR

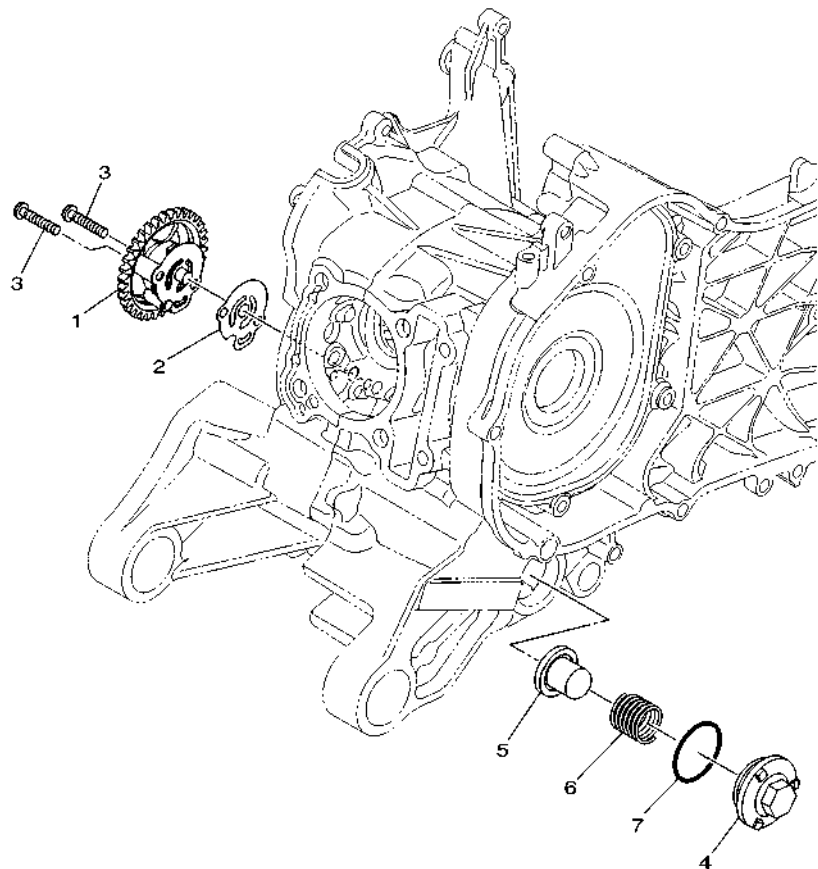


2PH1460-P050

FIG. 5 AIR SHROUD & FAN

REF. NO.	PART NO.	DESCRIPTION	BF42				REMARKS
1	2PH-E2651-00	AIR SHROUD, CYLINDER 1	1				
2	2PH-E2658-00	DAMPER, AIR SHROUD 1	1				
3	2PH-E2652-00	AIR SHROUD, CYLINDER 2	1				
4	2PH-E2653-00	AIR SHROUD, CYLINDER 3	1				
5	90520-05819	DAMPER, PLATE	1				
6	2PH-E2659-10	DAMPER, AIR SHROUD 2	1				UR
	2SX-E2659-10	DAMPER, AIR SHROUD 2	1				UR
7	2PH-E2668-10	DAMPER, AIR SHROUD 3	1				
8	95E32-06020	BOLT, FLANGE DEEP RECESS	3				
9	97702-60530	SCREW, TAPPING	6				
10	2PH-E2611-10	FAN	1				
11	95D32-06016	BOLT, FLANGE DEEP RECESS	3				
12	5LW-E3569-00	PLUG, BLIND	1				

FIG. 6 OIL PUMP




2BM1422-P050

REF. NO.	PART NO.	DESCRIPTION	BF42			REMARKS
1	2PH-E3300-10	OIL PUMP ASSY	1			
2	BF4-E3475-00	GASKET	1			
3	98502-05020	SCREW, PAN HEAD	2			
4	54P-E5351-00	PLUG, DRAIN	1			
5	54P-E3411-00	STRAINER, OIL	1			
6	90501-16004	SPRING, COMPRESSION	1			
7	93210-29800	O-RING	1			

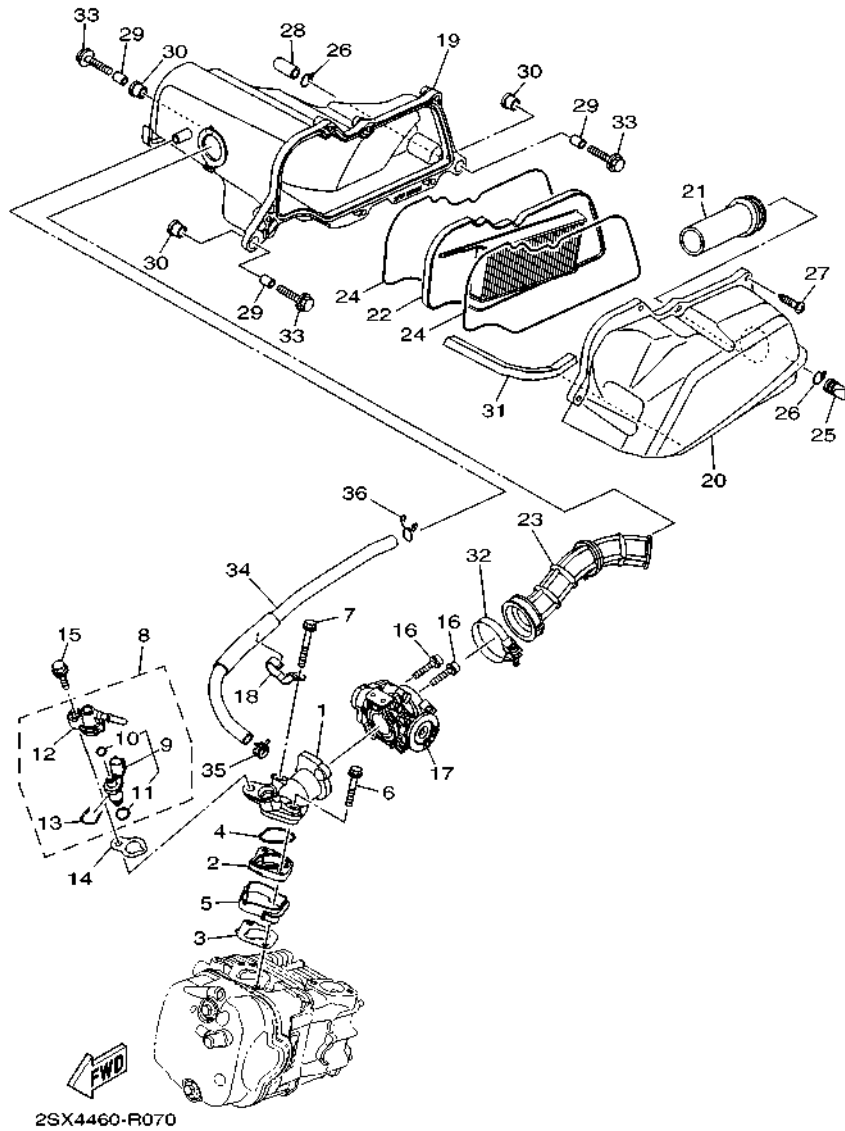


FIG. 7 INTAKE

REF. NO.	PART NO.	DESCRIPTION	BF#2				REMARKS
1	2PH-E3585-10	MANIFOLD	1				
2	2PH-E3595-00	JOINT	1				
3	2PH-E3556-10	GASKET, MANIFOLD	1				
4	93210-35883	O-RING	1				
5	2PH-E3593-00	DAMPER	1				
6	95D32-06035	BOLT, FLANGE DEEP RECESS	1				
7	95D32-06045	BOLT, FLANGE DEEP RECESS	1				
8	2PH-E3770-00	INJECTOR ASSY	1				
9	2PH-E3761-00	.INJECTOR ASSY	1				
10	54P-E4147-00	..O-RING	1				
11	5CA-E4147-00	..O-RING	1				
12	54P-E3938-00	.PIPE	1				
13	54P-E4137-00	.CLIP	1				
14	2PH-E3557-10	GASKET	1				
15	95D32-06025	BOLT, FLANGE DEEP RECESS	1				
16	90110-06846	BOLT, HEXAGON SOCKET HEAD	2				
17	2PH-E3750-00	THROTTLE BODY ASSY	1				
18	2PH-E4146-00	PLATE	1				
19	2PH-E4411-00	CASE, AIR CLEANER 1	1				
20	2PH-E4412-00	CAP, CLEANER CASE 1	1				
21	2PH-E4437-00	DUCT	1				
22	2PH-E4450-20	ELEMENT ASSY, AIR CLEANER	1				
23	2PH-E4453-00	JOINT, AIR CLEANER 1	1				
24	2PH-E4452-00	SEAL	2				
25	5TP-E443G-00	PIPE, DRAIN 2	1				
26	90467-12807	CLIP	2				
27	97707-50025	SCREW, TAPPING	6				

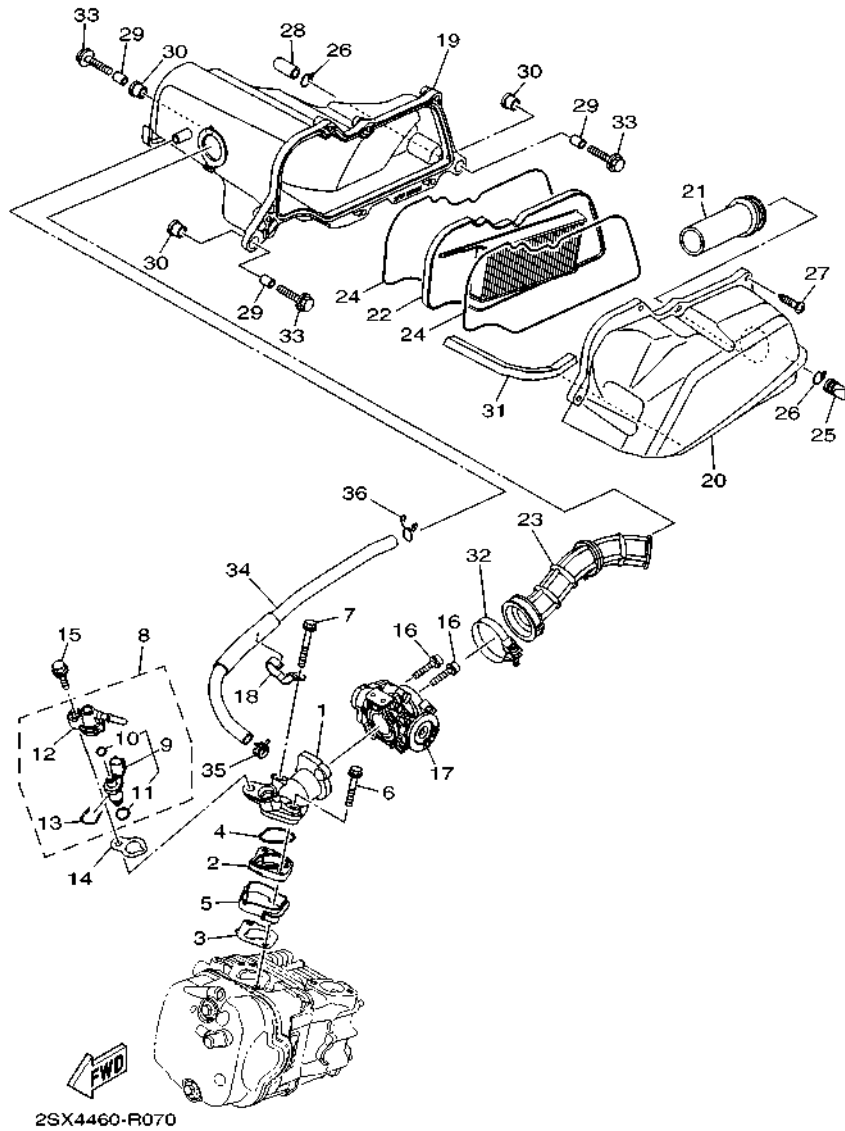
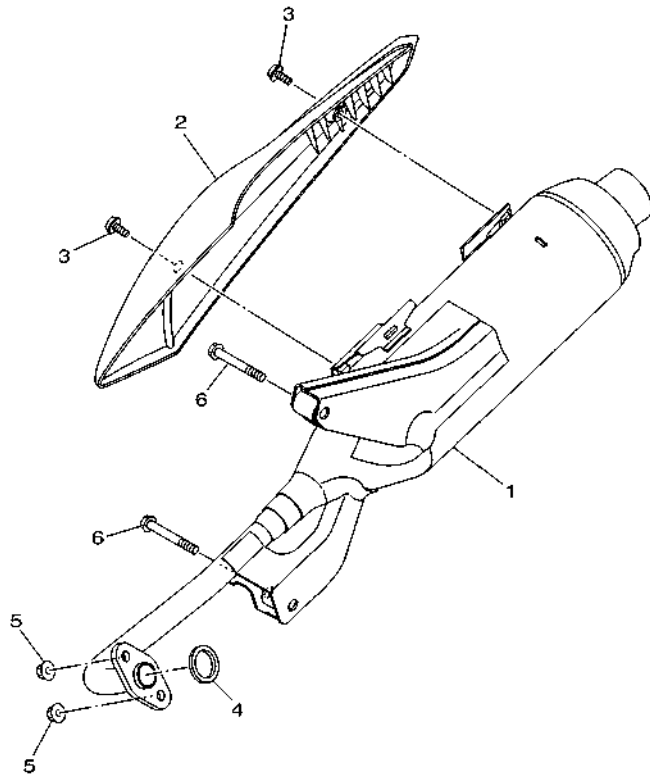


FIG. 7 INTAKE

REF. NO.	PART NO.	DESCRIPTION	BF42				REMARKS
28	5TL-E443E-00	PIPE, DRAIN	1				
29	90387-064W3	COLLAR	3				
30	90480-13013	GROMMET	3				
31	90520-10825	DAMPER, PLATE	1				
32	90450-46803	HOSE CLAMP ASSY	1				
33	95D32-06025	BOLT, FLANGE DEEP RECESS	3				
34	2PH-E1166-10	PIPE, BREATHER 1	1				UR
	2SX-E1166-10	PIPE, BREATHER 1	1				UR
35	90467-13808	CLIP	1				
36	90467-13858	CLIP	1				

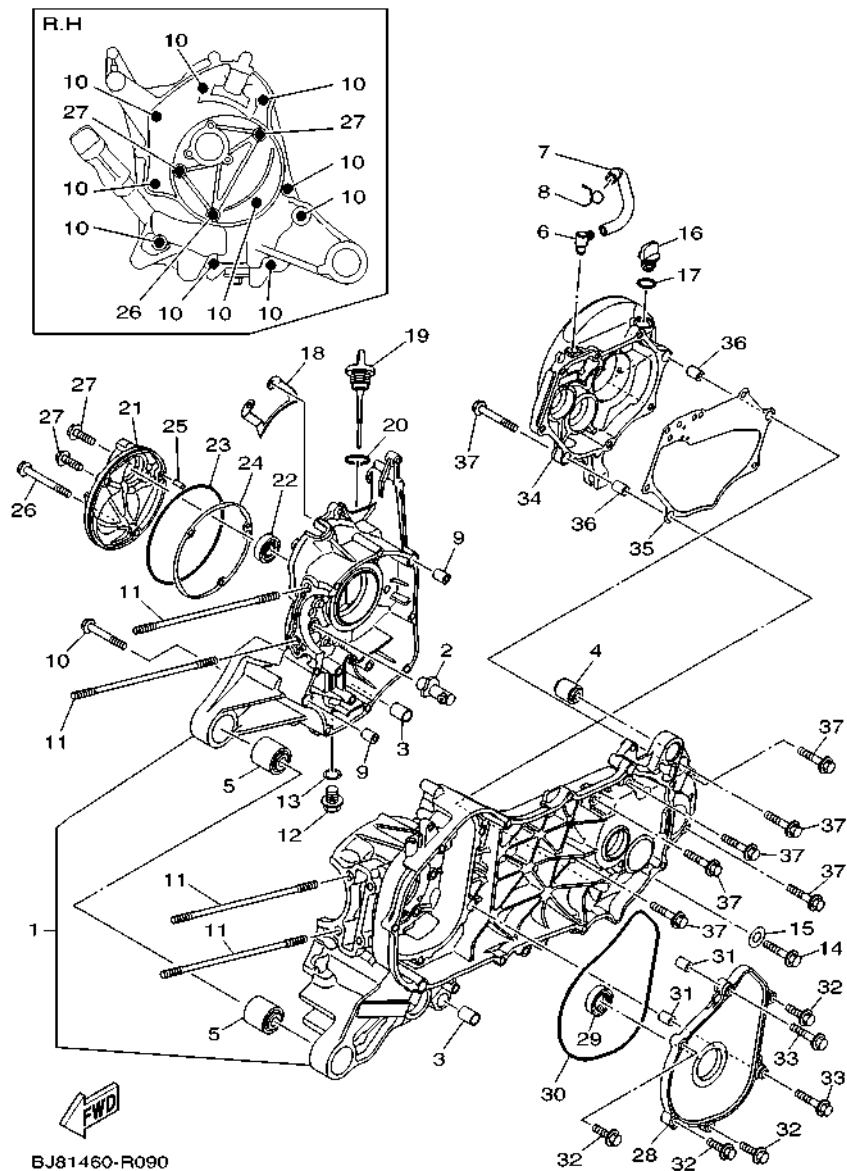
FIG. 8 EXHAUST



2PH1460-P080

REF. NO.	PART NO.	DESCRIPTION	BF42						REMARKS
1	B92-E4711-00	MUFFLER 1	1						
2	B92-E4718-00	PROTECTOR, MUFFLER 1	1						
3	90111-06811	BOLT,HEX. SOCKET BUTTON	2						
4	B92-E4613-00	GASKET, EXHAUST PIPE	1						
5	95702-08500	NUT, FLANGE	2						
6	95D32-08055	BOLT, FLANGE DEEP RECESS	2						

FIG. 9 CRANKCASE



BJ81460-R090

REF. NO.	PART NO.	DESCRIPTION	BF42				REMARKS
1	2PH-E5150-00	CRANKCASE ASSY	1				
2	2PH-E5155-00	NOZZLE 3	1				
3	1GC-F7121-00	BUSH	2				UR
	54P-F7121-00	BUSH	2				UR
4	5MX-F2216-00	BUSH, REAR SHOCK ABSORBER	1				
5	90388-10805	DAMPER	2				
6	54P-E5371-00	BREATHER	1				
7	2PH-E5373-00	PIPE, BREATHER	1				UR
	2SX-E5373-00	PIPE, BREATHER	1				UR
8	90467-11825	CLIP	1				
9	91810-14809	PIN, DOWEL	2				
10	95E32-06060	BOLT, FLANGE DEEP RECESS	10				
11	90116-08843	BOLT, STUD	4				
12	90340-12816	PLUG, STRAIGHT SCREW	1				
13	90430-12803	GASKET	1				
14	95812-06040	BOLT, FLANGE	1				
15	90430-06803	GASKET	1				
16	5LW-E5363-00	PLUG, OIL	1				
17	93210-148H8	O-RING	1				
18	2PH-E5113-00	PLATE	1				
19	2PH-E5362-10	PLUG, OIL LEVEL	1				
20	5LW-E3769-00	O-RING	1				
21	2PH-E5417-00	COVER, CAP	1				
22	93102-19814	OIL SEAL	1				UR
	93102-19817	OIL SEAL	1				UR
23	93211-07800	O-RING	1				
24	2PH-E5453-10	GASKET	1				

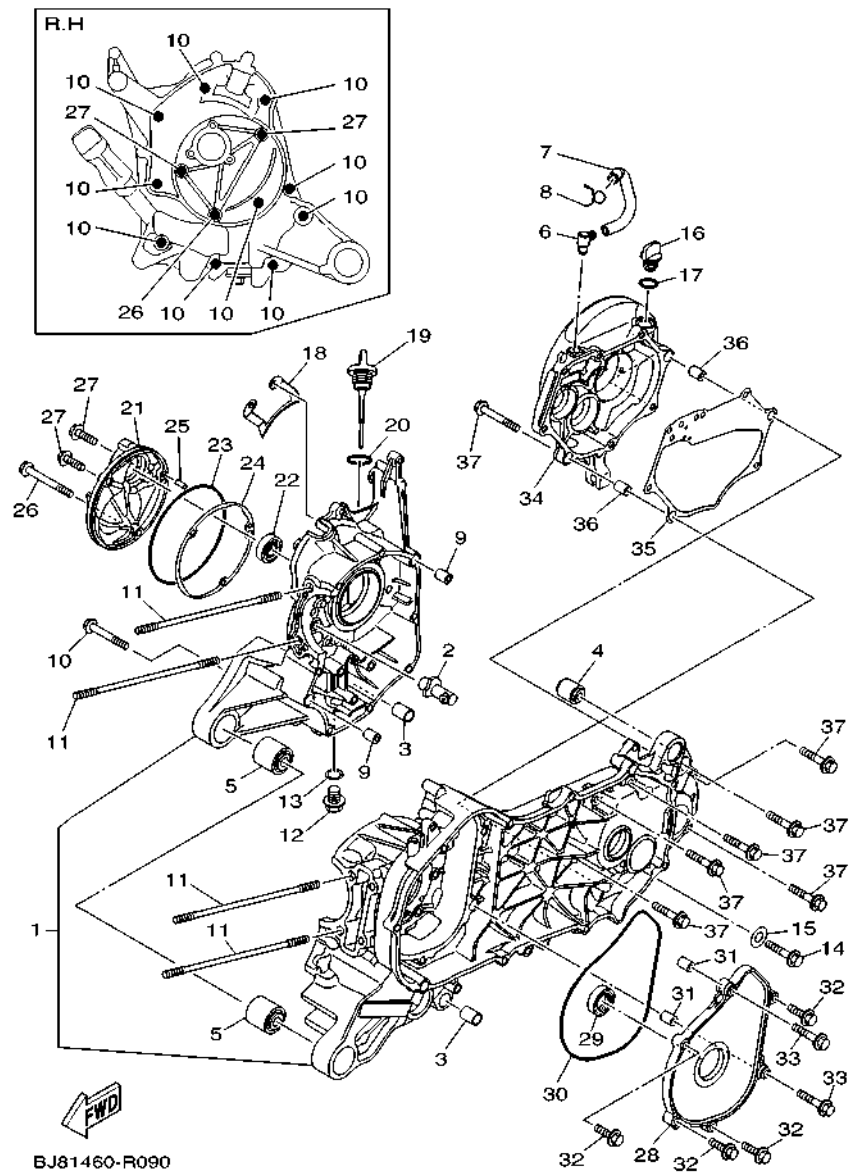
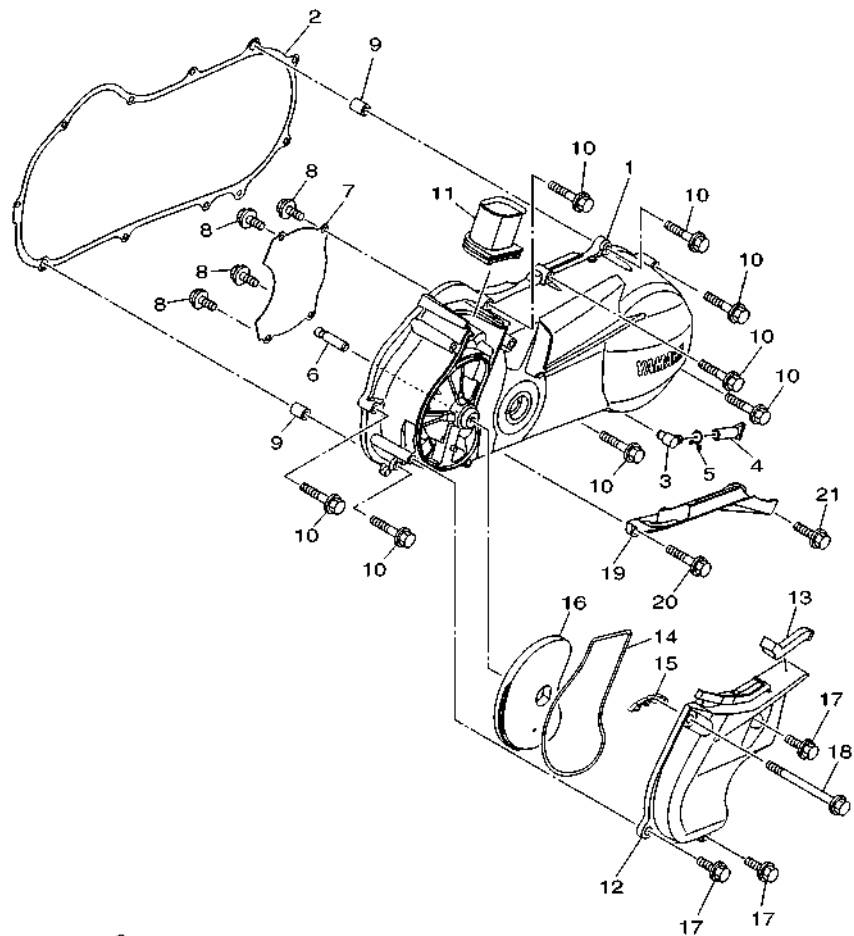


FIG. 9 CRANKCASE

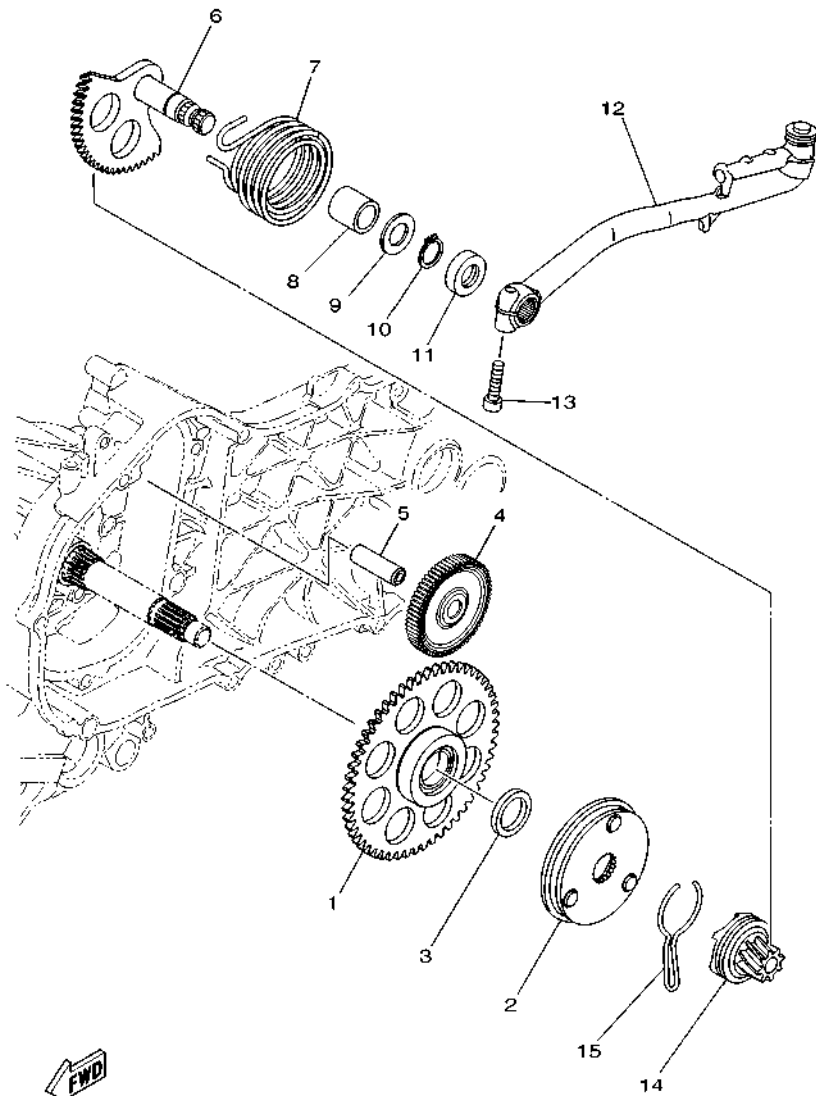
REF. NO.	PART NO.	DESCRIPTION	BF42				REMARKS
25	99480-05010	PIN	1				
26	95E32-06070	BOLT, FLANGE DEEP RECESS	1				
27	95E32-06020	BOLT, FLANGE DEEP RECESS	2				
28	2PH-E5423-00	COVER 2	1				
29	93102-25816	OIL SEAL	1				UR
	93102-25819	OIL SEAL	1				UR
30	93211-47801	O-RING	1				
31	91810-14809	PIN, DOWEL	2				
32	95E32-06025	BOLT, FLANGE DEEP RECESS	4				
33	95E32-06035	BOLT, FLANGE DEEP RECESS	2				
34	2PH-E5421-00	COVER, CRANKCASE 2	1				
35	2PH-E5461-10	GASKET, CRANKCASE COVER 2	1				
36	91810-14809	PIN, DOWEL	2				
37	95E32-06035	BOLT, FLANGE DEEP RECESS	7				

FIG. 10 CRANKCASE COVER 1




2PH1460-P100

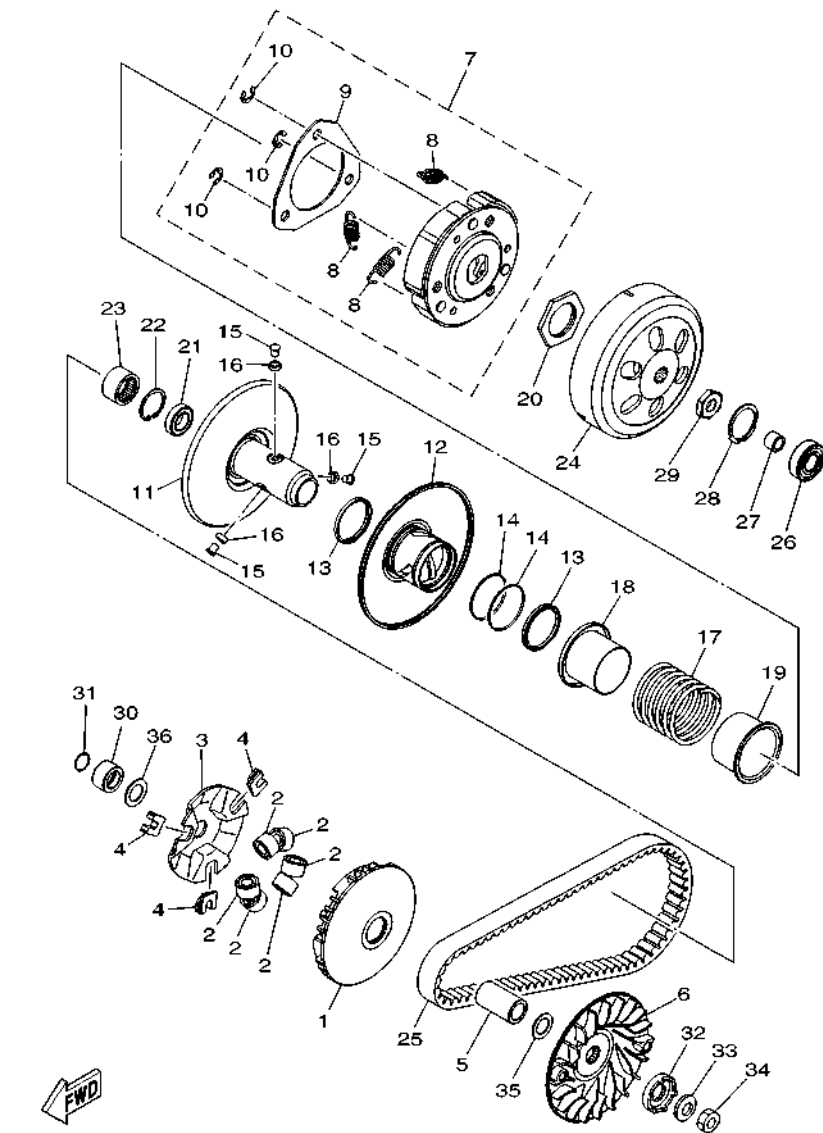
REF. NO.	PART NO.	DESCRIPTION	BF42				REMARKS
1	B92-E5411-00	COVER, CRANKCASE 1	1				
2	2PH-E5451-10	GASKET, CRANKCASE COVER 1	1				
3	54P-E5371-00	BREATHER	1				
4	4ST-E443E-00	PIPE, DRAIN	1				
5	90467-110A3	CLIP	1				
6	5LW-15659-01	SHAFT	1				UR
	1GC-E5659-00	SHAFT	1				UR
7	2PH-E5191-10	PLATE	1				
8	95E32-06010	BOLT, FLANGE DEEP RECESS	4				
9	91810-14809	PIN, DOWEL	2				
10	95E32-06035	BOLT, FLANGE DEEP RECESS	8				
11	2PH-E5473-00	DUCT, AIR	1				
12	2PH-E5471-00	DUCT, AIR	1				
13	2PH-E5316-00	DAMPER 1	1				
14	2PH-E5472-00	SEAL, AIR DUCT	1				
15	2PH-E5495-00	SEAL, PROTECTOR 1	1				
16	2PH-E5407-00	ELEMENT 1	1				
17	95D32-06020	BOLT, FLANGE DEEP RECESS	3				
18	95D32-06090	BOLT, FLANGE DEEP RECESS	1				
19	2PH-E5413-00	COVER	1				
20	95E32-06045	BOLT, FLANGE DEEP RECESS	1				
21	95E32-06020	BOLT, FLANGE DEEP RECESS	1				



2PH1460-P110

FIG. 11 STARTER

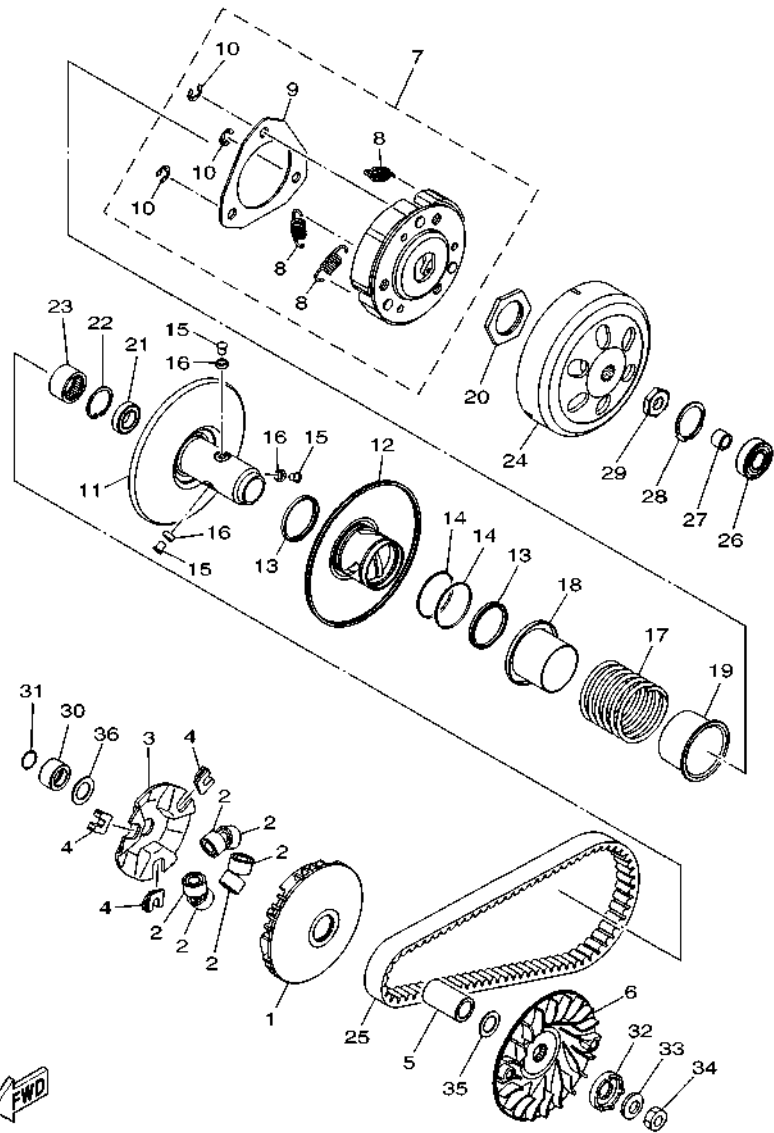
REF. NO.	PART NO.	DESCRIPTION	BF42				REMARKS
1	2PH-E5520-20	STARTER WHEEL ASSY	1				
2	2PH-E5570-00	STARTER CLUTCH ASSY	1				UR
	2PH-E5570-11	STARTER CLUTCH ASSY	1				UR
3	44D-E5598-00	COLLAR	1				UR
	1GC-E5598-00	COLLAR	1				UR
4	2BM-E5512-00	GEAR, IDLER 1	1				
5	44D-E5521-00	SHAFT 1	1				UR
	1GC-E5521-00	SHAFT 1	1				UR
6	2PH-E5601-10	KICK SHAFT ASSY	1				
7	90508-32768	SPRING, TORSION	1				
8	90380-15811	BUSH, SOLID	1				
9	90201-154E8	WASHER, PLATE (T=1.0)	1				
10	99009-15400	CIRCLIP	1				
11	93102-15801	OIL SEAL	1				
12	2BL-E5620-10	KICK CRANK ASSY	1				
13	91332-06025	BOLT	1				
14	2PH-E5630-00	KICK PINION ASSY	1				
15	5MX-E5673-00	CLIP	1				



2SX1460-P120

FIG. 12 CLUTCH

REF. NO.	PART NO.	DESCRIPTION	BF42				REMARKS
1	2PH-E7620-00	PRIMARY SLIDING SHEAVE COMP.	1				
2	2SX-E7632-10	WEIGHT	6				
3	2PH-E7623-00	CAM	1				
4	2PH-E7653-00	SLIDER	3				
5	2PH-E7674-00	COLLAR, GUIDE	1				
6	2SX-E7611-10	SHEAVE, PRIMARY FIXED	1				
7	BJ8-E6620-00	CLUTCH CARRIER ASSY	1				
8	2PH-E6626-00	.SPRING, CLUTCH WEIGHT 1	3				
9	2PH-E6523-00	.PLATE, WEIGHT THRUST	1				
10	2PH-E6819-00	.CIRCLIP, CLUTCH	3				
11	BJ8-E7660-00	SECONDARY FIXED SHEAVE COMP.	1				
12	BJ8-E7670-00	SECONDARY SLIDING SHEAVE	1				
13	2PH-E7465-00	SEAL	2				
14	2PH-E7465-10	SEAL	2				
15	2PH-E7664-00	PIN, GUIDE	3				
16	2PH-E7674-10	COLLAR, GUIDE	3				
17	2PH-E7683-00	SPRING, SECONDARY	1				
18	2PH-E7684-00	SEAT, SECONDARY SPRING	1				
19	2PH-E7644-00	SEAT, SPRING	1				
20	2PH-E7668-00	NUT	1				
21	2PH-E7678-00	BEARING	1				
22	2PH-E5744-00	CIRCLIP	1				
23	2PH-E7678-10	BEARING	1				
24	2PH-E6611-00	CLUTCH HOUSING COMP.	1				
25	2PH-E7641-00	V-BELT	1				
26	93306-252YB	BEARING	1				
27	90380-10803	BUSH, SOLID	1				

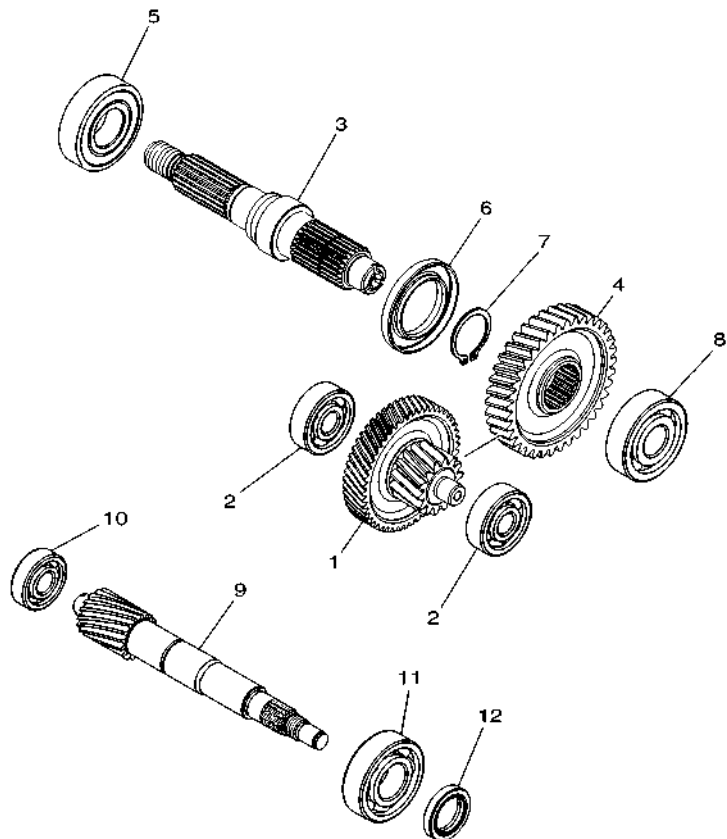


2SX1460-P120

FIG. 12 CLUTCH

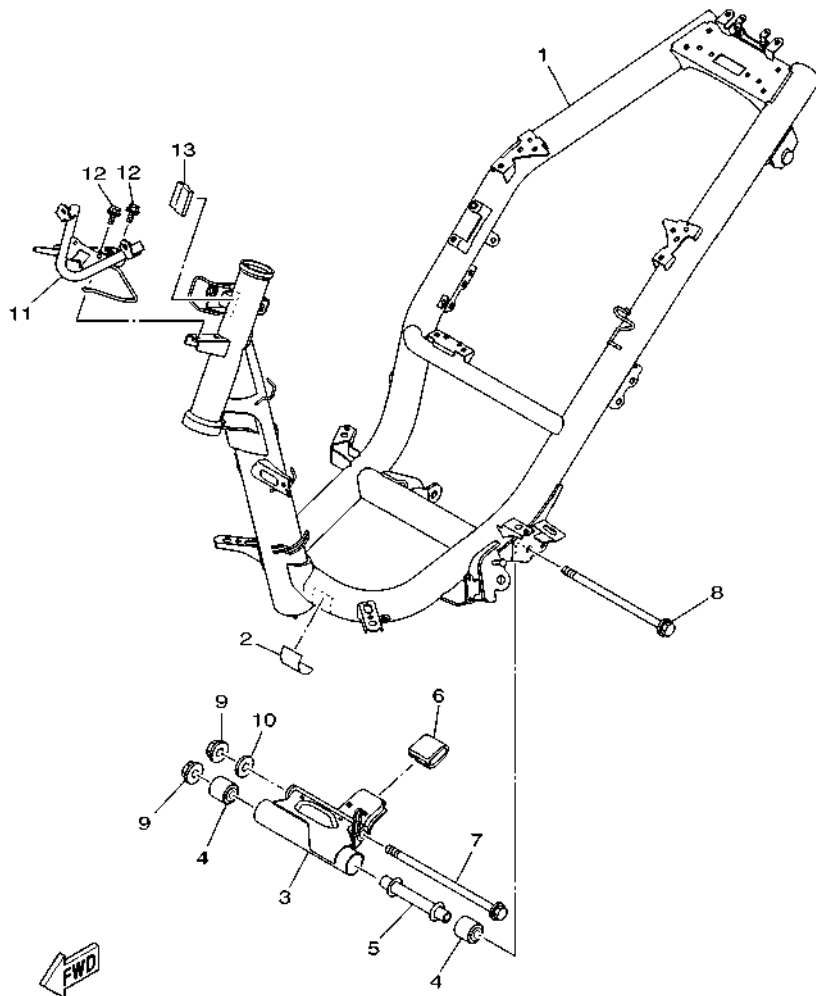
REF. NO.	PART NO.	DESCRIPTION	BF42				REMARKS
28	99009-35700	CIRCLIP	1				
29	90170-12803	NUT	1				
30	2PH-E7645-10	COLLAR	1				
31	93210-16805	O-RING	1				
32	5MX-E5657-00	CLUTCH, ONEWAY	1				
33	90208-12808	WASHER, CONICAL SPRING	1				
34	90170-12800	NUT	1				
35	90201-15846	WASHER, PLATE	1				
36	90201-16817	WASHER, PLATE	1				

FIG. 13 TRANSMISSION




2PH1460-P130

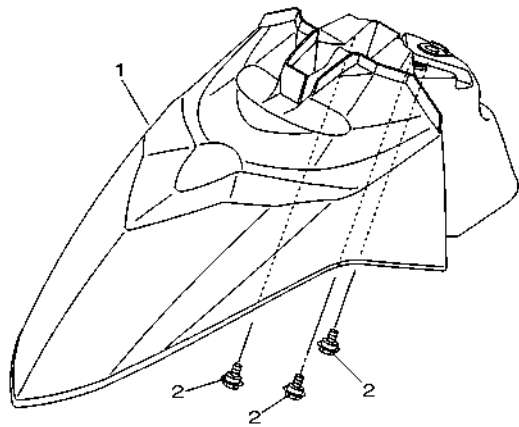
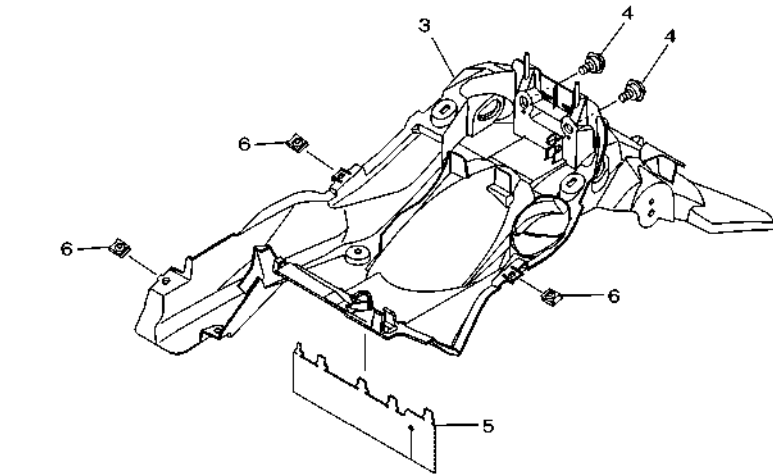
REF. NO.	PART NO.	DESCRIPTION	BF42				REMARKS
1	2PH-E7410-00	MAIN AXLE COMP. (12T/50T)	1				UR
	2PH-E7410-10	MAIN AXLE COMP. (12T/50T)	1				UR
2	93306-351Y5	BEARING	2				
3	2PH-E7421-00	AXLE, DRIVE	1				UR
	2PH-E7421-10	AXLE, DRIVE	1				UR
4	2PH-E7211-00	GEAR, 1ST WHEEL (39T)	1				UR
	2PH-E7211-10	GEAR, 1ST WHEEL (39T)	1				UR
5	93306-272YA	BEARING	1				
6	93102-32801	OIL SEAL	1				UR
	93102-32809	OIL SEAL	1				UR
7	99009-25400	CIRCLIP	1				
8	93306-303YN	BEARING	1				UR
	93306-303YS	BEARING	1				UR
9	2PH-E6111-00	GEAR, PRIMARY DRIVE (16T)	1				UR
	2PH-E6111-10	GEAR, PRIMARY DRIVE (16T)	1				UR
10	93306-201YK	BEARING	1				UR
	93306-201YR	BEARING	1				UR
11	93306-204XT	BEARING	1				UR
	93306-204XV	BEARING	1				UR
12	93102-20815	OIL SEAL	1				UR
	93102-20816	OIL SEAL	1				UR



2PH5460-S140

FIG. 14 FRAME

REF. NO.	PART NO.	DESCRIPTION	BF42				REMARKS
1	BF4-F1110-00	FRAME COMP.	1				
2	5D9-F414G-00	SEAL	1				
3	2PH-F1410-20	ENGINE BRACKET COMP.	1				
4	90388-10800	DAMPER	2				
5	54P-F1459-00	SPACER	1				
6	2PH-F7114-00	STOPPER, MAIN STAND	1				
7	90105-108B2	BOLT, FLANGE	1				
8	54P-F2141-00	SHAFT, PIVOT	1				
9	95602-10200	NUT, S/L FLANGE	2				
10	90201-10831	WASHER, PLATE	1				
11	BF4-F8356-00	STAY 1	1				
12	95D02-06010	BOLT, FLANGE DEEP RECESS	2				
13	90520-08809	DAMPER, PLATE	1				

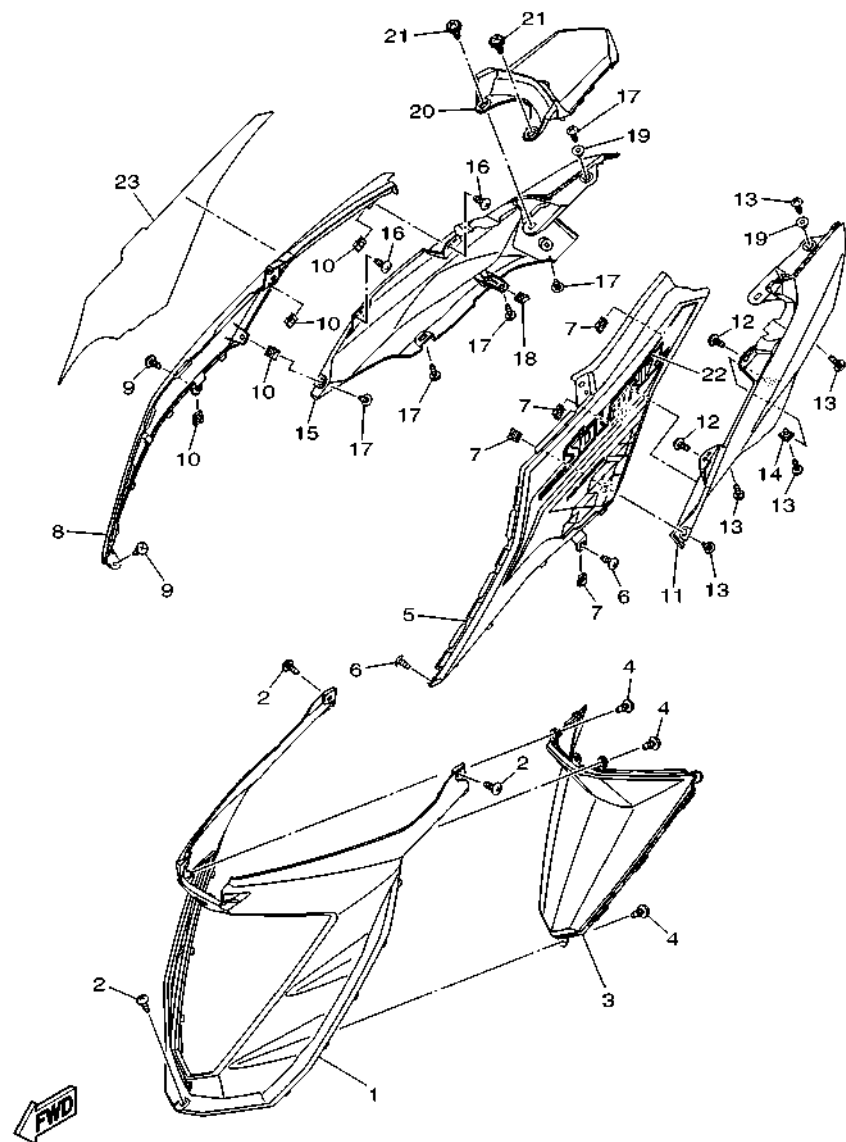


BF41440-S150

FIG. 15 FENDER

REF. NO.	PART NO.	DESCRIPTION	BF42				REMARKS
1	BF4-F1511-00-P0	FENDER, FRONT	1				UR FOR RM7
	BF4-F1511-00-P4	FENDER, FRONT	1				UR FOR VPBC5
	BF4-F1511-00-P5	FENDER, FRONT	1				UR FOR DNPM1
	BF4-F1511-00-P6	FENDER, FRONT	1				UR FOR MC1
2	90109-068B4	BOLT	3				
3	BF4-F1611-00	FENDER, REAR	1				
4	90109-068B4	BOLT	2				
5	B92-F1621-00	FLAP	1				
6	90183-05807	NUT, SPRING	3				

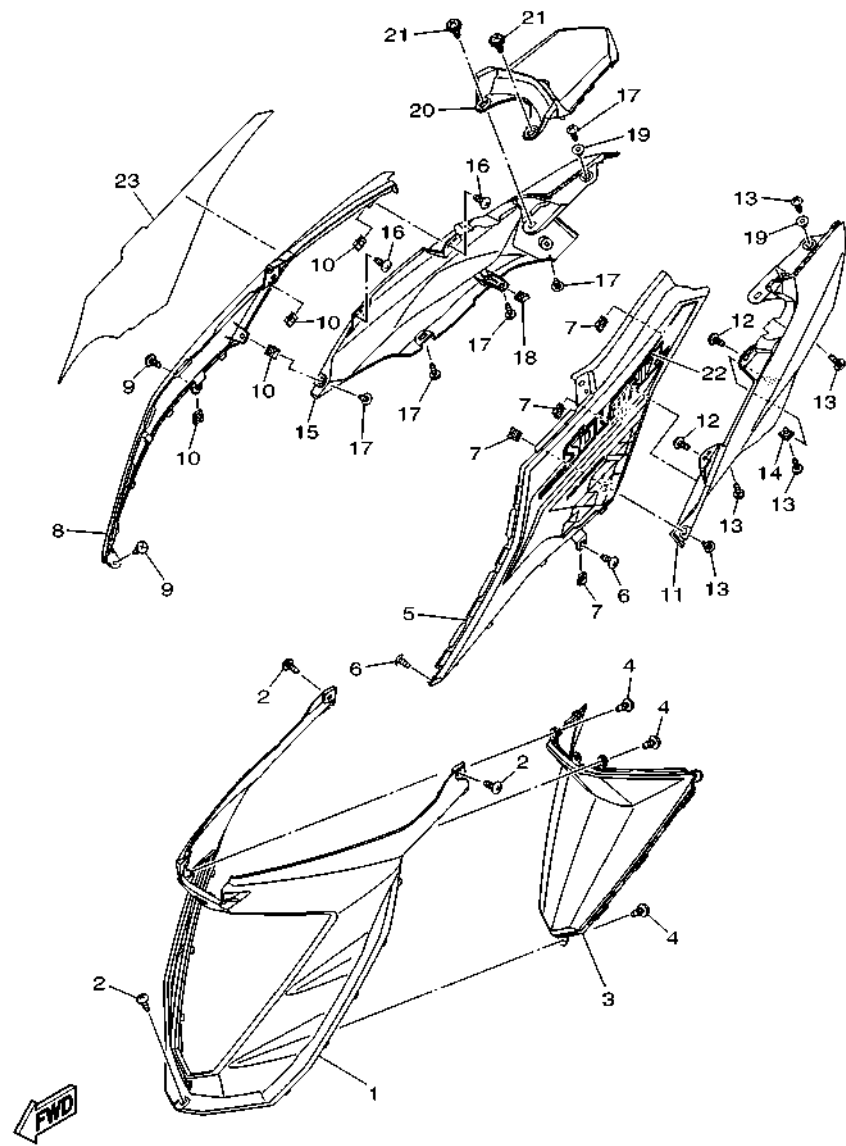
FIG. 16 SIDE COVER



BF42440-T160

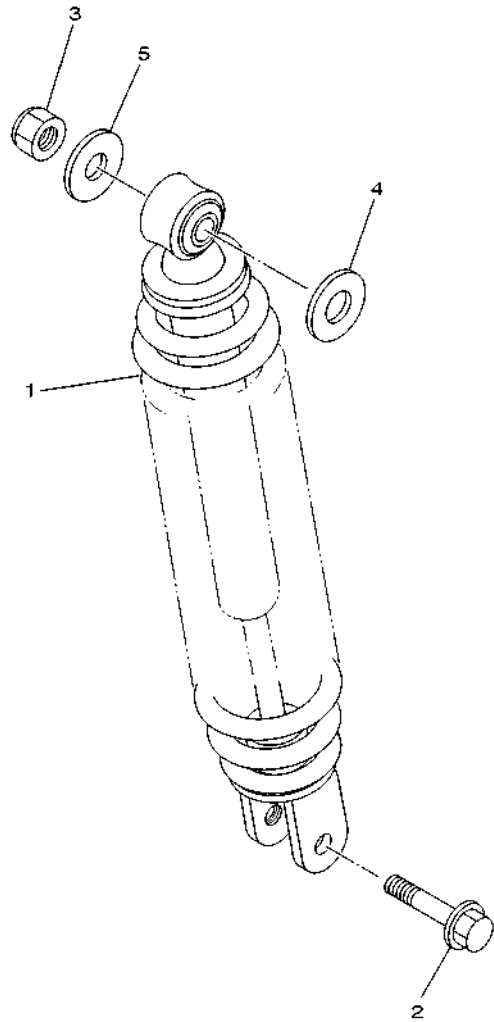
REF. NO.	PART NO.	DESCRIPTION	BF42				REMARKS
1	BF4-F172W-00	COVER	1				
2	97707-50016	SCREW, TRUSS HEAD TAPPING	3				
3	BF4-F171A-00	COVER, TOP	1				
4	97702-50014	SCREW, TAPPING	3				
5	BF4-F1711-00-P0	COVER, SIDE 1	1				UR FOR RM7
	BF4-F1711-00-P4	COVER, SIDE 1	1				UR FOR VPBC5
	BF4-F1711-00-P5	COVER, SIDE 1	1				UR FOR DNPM1
	BF4-F1711-00-P3	COVER, SIDE 1	1				UR FOR MC1
6	97707-50016	SCREW, TRUSS HEAD TAPPING	2				
7	90183-05807	NUT, SPRING	4				
8	BF4-F1721-00-P0	COVER, SIDE 2	1				UR FOR RM7
	BF4-F1721-00-P4	COVER, SIDE 2	1				UR FOR VPBC5
	BF4-F1721-00-P5	COVER, SIDE 2	1				UR FOR DNPM1
	BF4-F1721-00-P3	COVER, SIDE 2	1				UR FOR MC1
9	97707-50016	SCREW, TRUSS HEAD TAPPING	2				
10	90183-05807	NUT, SPRING	4				
11	BF4-F1731-00	COVER, SIDE 3	1				
12	97702-50014	SCREW, TAPPING	2				
13	97707-50016	SCREW, TRUSS HEAD TAPPING	5				
14	90183-05807	NUT, SPRING	1				
15	BF4-F1741-00	COVER, SIDE 4	1				
16	97702-50014	SCREW, TAPPING	2				
17	97707-50016	SCREW, TRUSS HEAD TAPPING	5				
18	90183-05807	NUT, SPRING	1				
19	90387-05820	COLLAR	2				
20	BF4-F171E-00	COVER, SIDE 5	1				
21	90159-06810	SCREW, WITH WASHER	2				

FIG. 16 SIDE COVER



BF42440-T160

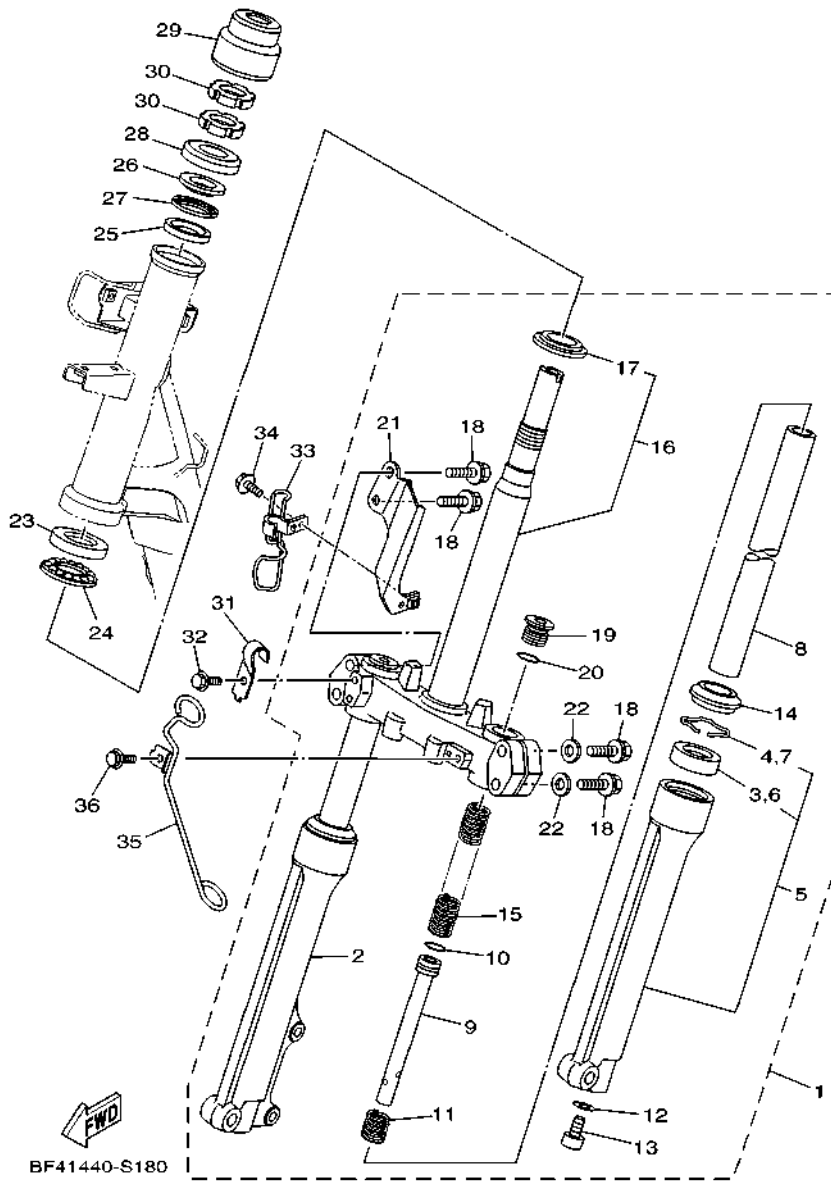
REF. NO.	PART NO.	DESCRIPTION	BF42				REMARKS
22	BF4-F173E-40	GRAPHIC 1	1				UR FOR RM7
	BF4-F173E-50	GRAPHIC 1	1				UR FOR VPBC5
	BF4-F173E-60	GRAPHIC 1	1				UR FOR DNPM1
	BF4-F173E-70	GRAPHIC 1	1				UR FOR MC1
23	BF4-F173F-40	GRAPHIC 2	1				UR FOR RM7
	BF4-F173F-50	GRAPHIC 2	1				UR FOR VPBC5
	BF4-F173F-60	GRAPHIC 2	1				UR FOR DNPM1
	BF4-F173F-70	GRAPHIC 2	1				UR FOR MC1
<hr/>							
<hr/>							
<hr/>							
<hr/>							
<hr/>							
<hr/>							
<hr/>							
<hr/>							
<hr/>							
<hr/>							




 54S1431-L170

FIG. 17 REAR ARM & SUSPENSION

REF. NO.	PART NO.	DESCRIPTION	BF42				REMARKS
1	10C-F2210-30	SHOCK ABSORBER ASSY, REAR	1				
2	90105-088H4	BOLT, FLANGE	1				
3	95302-10600	NUT, HEXAGON	1				
4	90201-12028	WASHER, PLATE	1				
5	90201-10065	WASHER, PLATE	1				
<hr/>							
<hr/>							
<hr/>							
<hr/>							
<hr/>							
<hr/>							
<hr/>							
<hr/>							
<hr/>							
<hr/>							



BF41440-S180

FIG. 18 STEERING

REF. NO.	PART NO.	DESCRIPTION	BF42				REMARKS
1	1VB-F3100-01	FRONT FORK ASSY	1				
2	1VB-F3136-00	.TUBE, OUTER 2	1				
3	4UV-F3145-00	.OIL SEAL	1				
4	5P0-F3156-00	.RING, SNAP	1				
5	1VB-F3126-00	.TUBE, OUTER (L.H)	1				
6	4UV-F3145-00	.OIL SEAL	1				
7	5P0-F3156-00	.RING, SNAP	1				
8	5VW-F3110-00	.INNER TUBE COMP.1	2				
9	1VB-F3170-00	.CYLINDER COMP., FRONT FORK	2				
10	2JG-F3157-00	.RING, PISTON	2				
11	31D-F3152-00	.SPRING, SUB	2				
12	509-F3158-L0	.GASKET	2				
13	31B-F3181-00	.BOLT, HEXAGON SOCKET HEAD	2				
14	5LL-F3144-00	.SEAL, DUST	2				
15	1VB-F3141-00	.SPRING, FRONT FORK	2				
16	4D0-F3340-00	.UNDER BRACKET COMP.	1				
17	156-F3411-00	.RACE, BALL 1	1				
18	4D0-F3346-00	.BOLT 1	4				
19	5VW-F3111-00	.BOLT, CAP	2				
20	2JG-F3147-00	.O-RING	2				
21	1VB-F334G-00	.BRACKET 1	1				
22	4D0-F3165-00	.WASHER, FELT	2				
23	1KL-F3412-10	RACE, BALL 2	1				
24	5VL-F341E-10	RETAINER, BALL BEARING	1				
25	4RT-F3412-10	RACE, BALL 2	1				
26	4RT-F3411-10	RACE, BALL 1	1				
27	1P6-F341E-10	RETAINER, BALL BEARING	1				

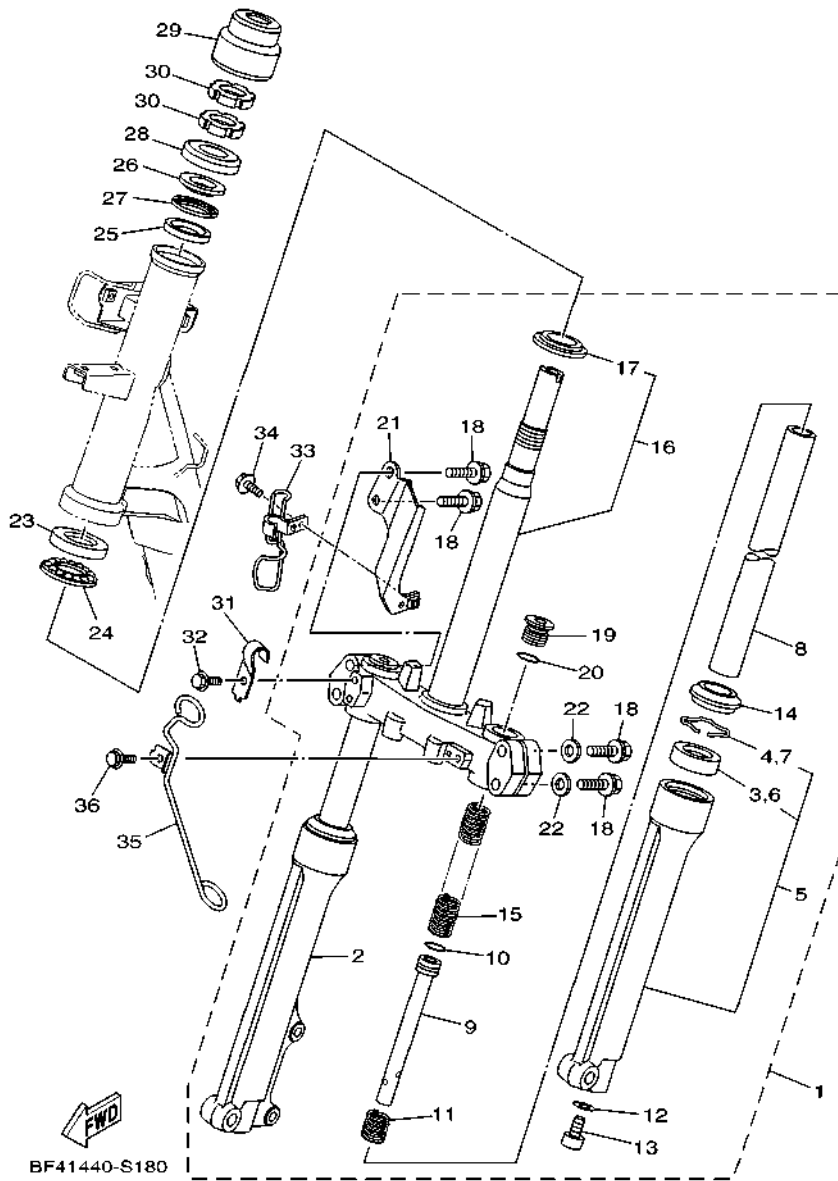
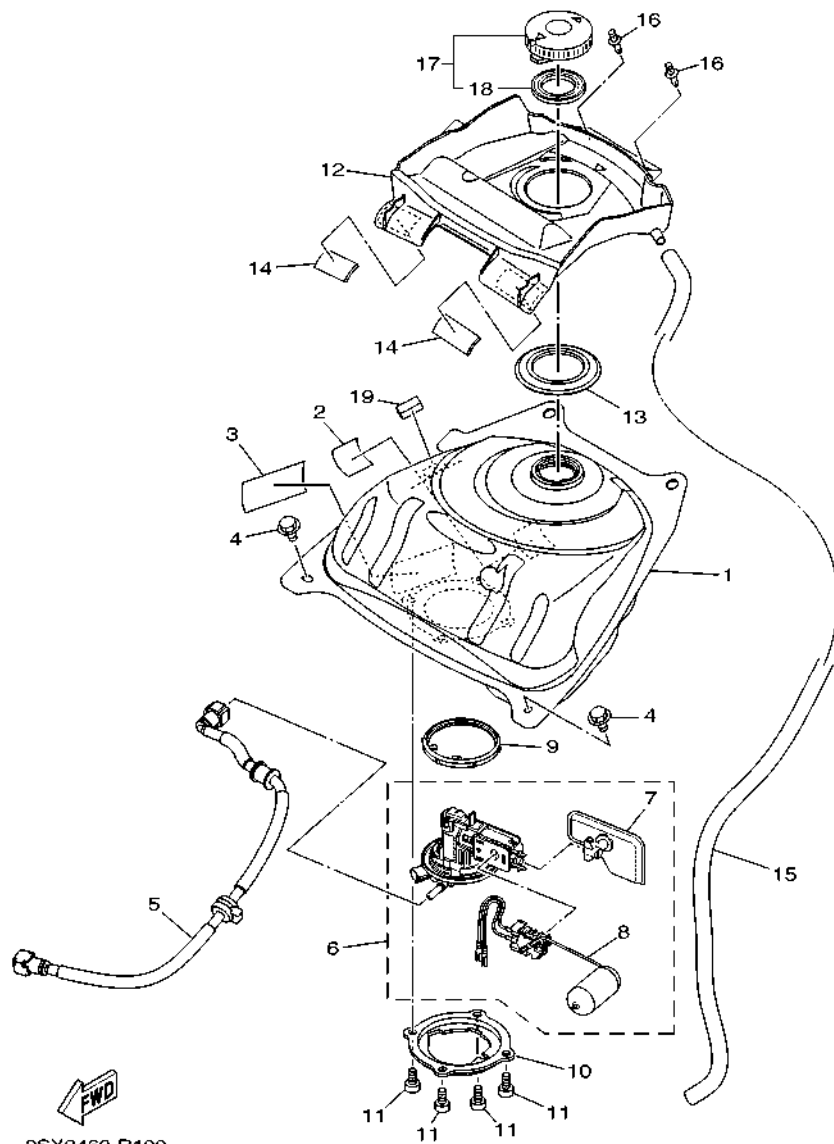


FIG. 18 STEERING

REF. NO.	PART NO.	DESCRIPTION	BF42				REMARKS
28	3AY-F3416-00	COVER, BALL RACE 2	1				
29	BF4-F3415-00	COVER, BALL RACE 1	1				
30	90179-25002	NUT	2				
31	BF4-F5875-00	HOLDER, BRAKE HOSE 1	1				
32	95D02-06010	BOLT, FLANGE DEEP RECESS	1				
33	1VB-F5876-00	HOLDER, BRAKE HOSE 2	1				
34	95D02-06010	BOLT, FLANGE DEEP RECESS	1				
35	BF4-F1164-00	HOLDER, CABLE	1				
36	95D02-06010	BOLT, FLANGE DEEP RECESS	1				



2SX2460-R190

FIG. 19 FUEL TANK

REF. NO.	PART NO.	DESCRIPTION	BF42				REMARKS
1	B92-F4110-00	FUEL TANK COMP.	1				
2	5D9-F414G-10	SEAL	1				
3	5D9-F414G-00	SEAL	1				
4	90119-06155	BOLT, WITH WASHER	2				
5	2PH-E3971-00	PIPE, FUEL 1	1				
6	2PH-E3907-00	FUEL PUMP COMP.	1				
7	54P-E3915-00	.FILTER, FUEL SUCTION	1				
8	2PH-H5752-00	.SENDER UNIT ASSY, FUEL METER	1				
9	54P-F414G-10	SEAL	1				
10	54P-F4491-00	BRACKET, FUEL PUMP	1				
11	91332-05010	BOLT	4				
12	B92-F41B1-00	COVER, TANK	1				
13	B92-F414G-00	SEAL	1				
14	5D9-H2126-00	PAD, BATTERY	2				
15	91A20-07065	TUBE, FLEXIBLE VINYL	1				
16	90269-06816	RIVET	2				
17	4YY-F4610-00	CAP ASSY	1				
18	4YY-F4612-00	.PACKING, CAP	1				
19	90520-08812	DAMPER, PLATE	1				

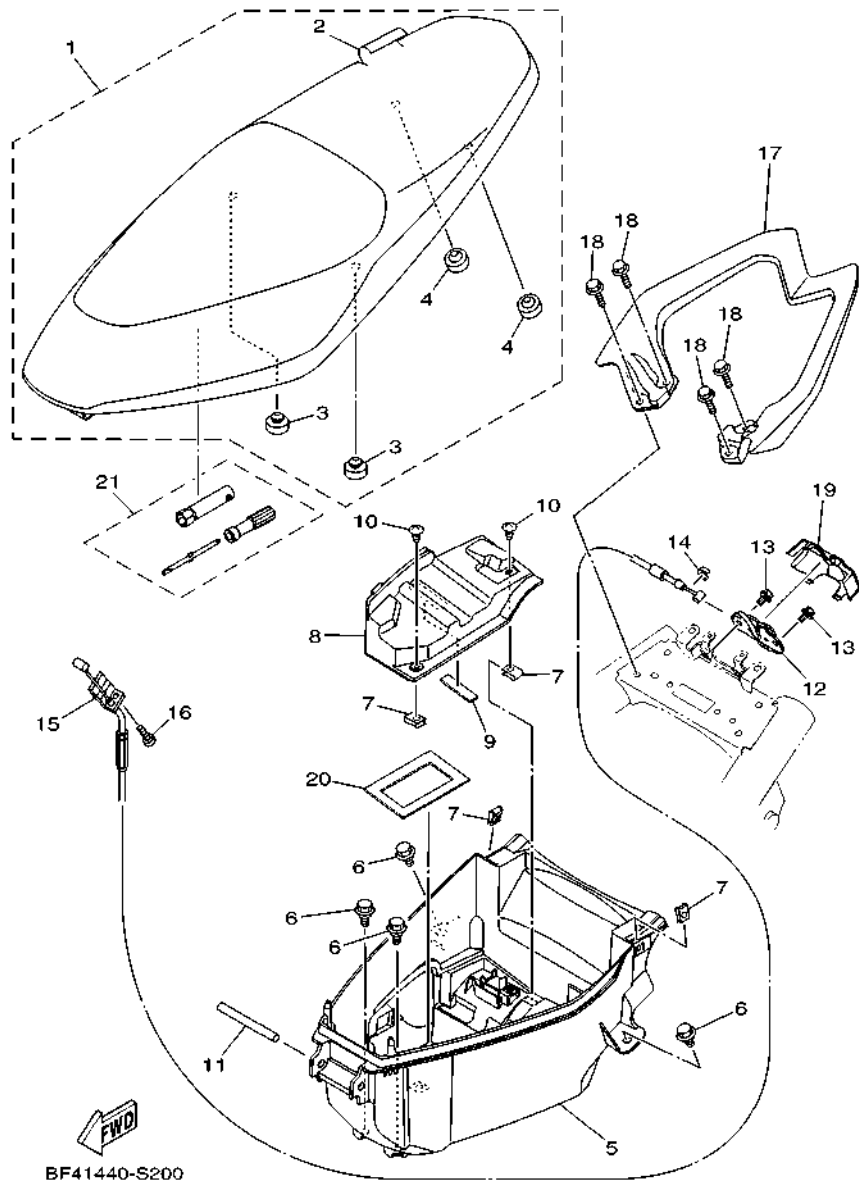
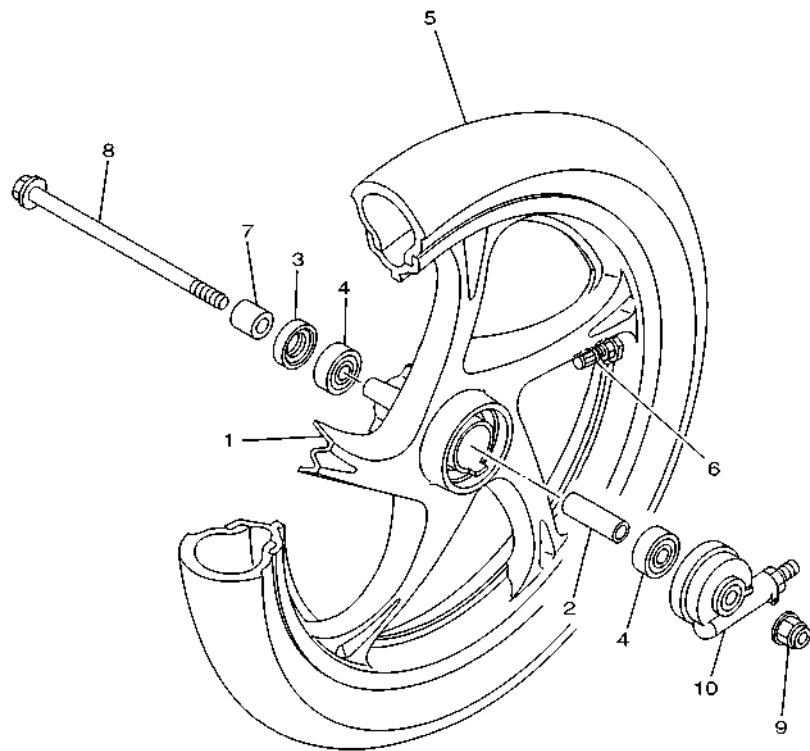


FIG. 20 SEAT

REF. NO.	PART NO.	DESCRIPTION	BF42				REMARKS
1	BF4-F4730-00	DOUBLE SEAT ASSY	1				
2	BF4-F470F-00	.SEAT COVER COMP.	1				
3	44P-F4741-00	.PAD, SEAT	2				
4	4HF-F4741-00	.PAD, SEAT	2				
5	BF4-F4704-00	BOX ASSY	1				
6	90109-068B4	BOLT	4				
7	90183-05807	NUT, SPRING	4				
8	BF4-H2129-00	COVER, BATTERY	1				
9	90520-03806	DAMPER, PLATE	1				
10	97707-50012	SCREW, TRUSS HEAD TAPPING	2				
11	2WB-F4727-00	PIN, SEAT FITTING	1				
12	40D-F4780-01	SEAT LOCK ASSY	1				
13	95E32-06010	BOLT, FLANGE DEEP RECESS	2				
14	1S8-F4768-00	STOPPER	1				
15	BF4-F478E-00	CABLE, SEAT LOCK	1				
16	98507-05010	SCREW, PAN HEAD	1				
17	BF4-F4773-00-P0	HANDLE, SEAT	1				UR RM7
	BF4-F4773-00-P2	HANDLE, SEAT	1				UR VPBC5,DNPM1
	BF4-F4773-00-P3	HANDLE, SEAT	1				UR MC1
18	95D32-06020	BOLT, FLANGE DEEP RECESS	4				
19	B92-F472T-00	COVER, SEAT LOCK	1				
20	1VB-H2176-00	DAMPER	1				
21	1VB-F8100-00	TOOL KIT	1				

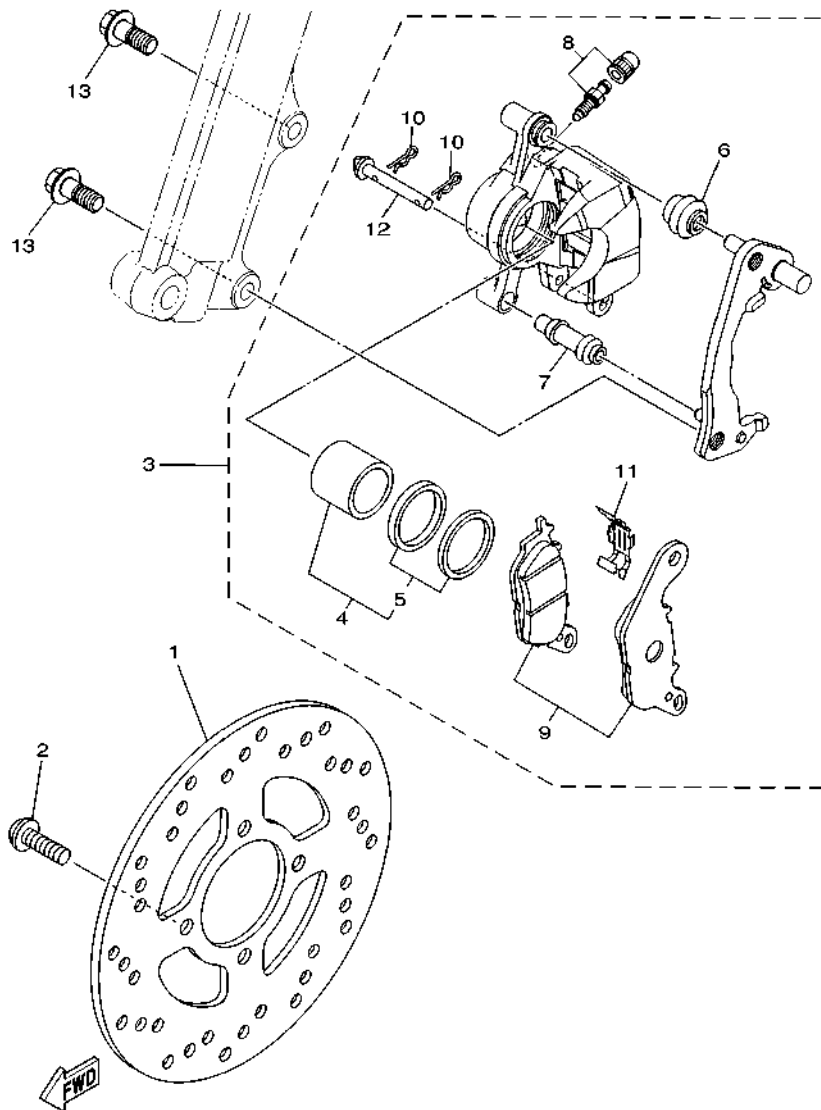
FIG. 21 FRONT WHEEL



REF. NO.	PART NO.	DESCRIPTION	BF42				REMARKS
1	1VB-F5168-00-33	CAST WHEEL, FRONT	1				YB
2	90560-10292	SPACER	1				
3	93106-20808	OIL SEAL	1				
4	93306-300X8	BEARING	2				
5	94107-14807	TIRE (70/90-14 M/C 34P V282F)	1				VEE RUBBER
6	93900-00817	VALVE, RIM (TR412)	1				
7	90387-10837	COLLAR	1				
8	2PH-F5181-00	AXLE, WHEEL	1				
9	95602-10200	NUT, S/L FLANGE	1				
10	5TL-F5190-01	GEAR UNIT ASSY	1				



BF42440-T210



BF41440-S220

FIG. 22 FRONT BRAKE CALIPER

REF. NO.	PART NO.	DESCRIPTION	BF42				REMARKS
1	5TL-F582U-10	DISK, BRAKE (RIGHT)	1				
2	90111-08853	BOLT,HEX. SOCKET BUTTON	4				
3	2PH-F580U-10	CALIPER ASSY (RIGHT)	1				
4	2BM-F5802-00	.PISTON ASSY, CALIPER	1				
5	5YP-F5803-50	..CALIPER SEAL KIT	1				
6	2BM-F5917-00	.BOOT, CALIPER	1				
7	5YP-F5937-00	.BOOT 2	1				
8	4C9-W0048-00	.BLEED SCREW KIT	1				
9	2BM-F5805-00	.BRAKE PAD KIT	1				
10	5YP-F5925-01	.CLIP	2				
11	2BM-F5919-00	.SUPPORT, PAD	1				
12	5YP-F5924-10	.PIN, PAD	1				
13	90105-10831	BOLT, FLANGE	2				

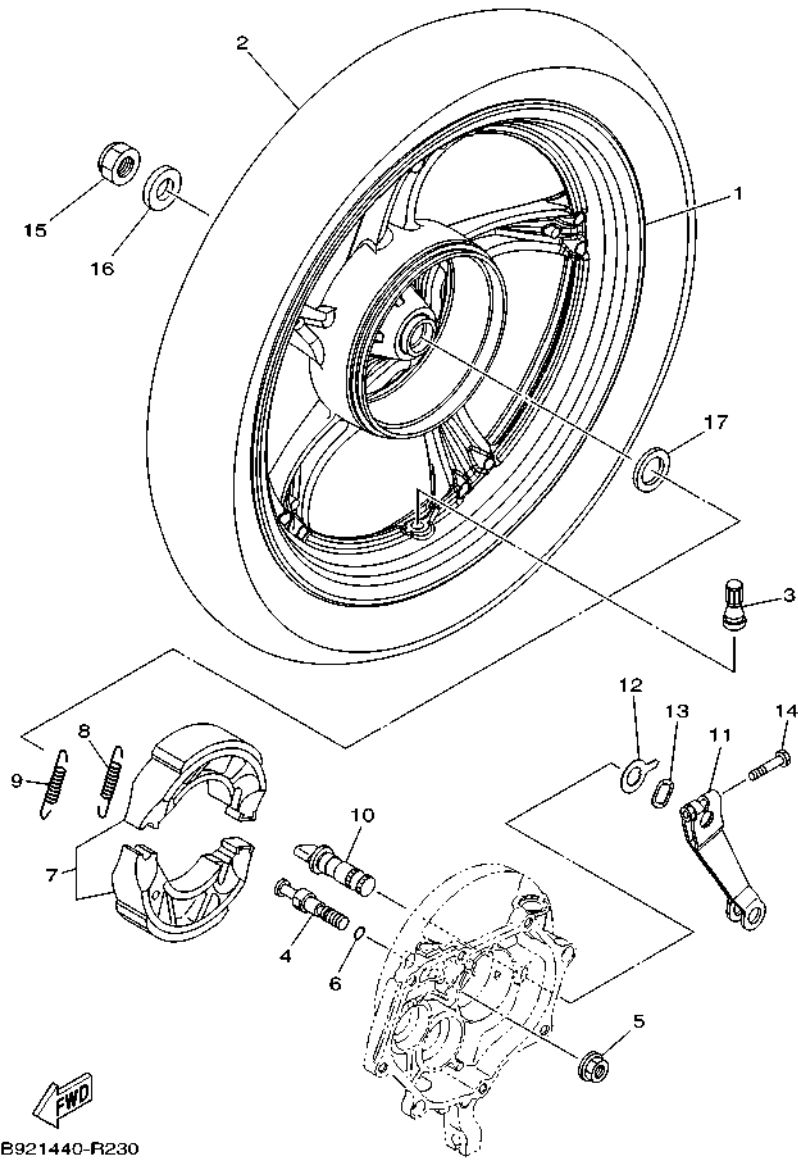
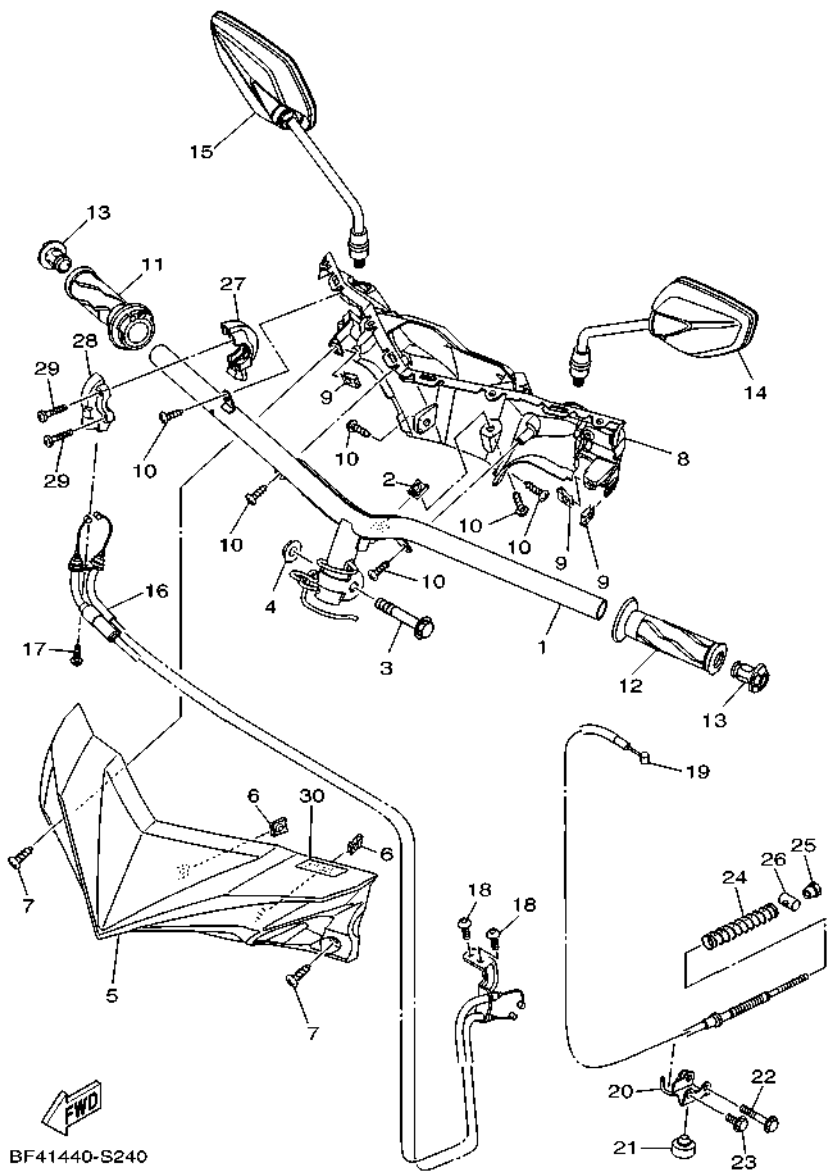


FIG. 23 REAR WHEEL

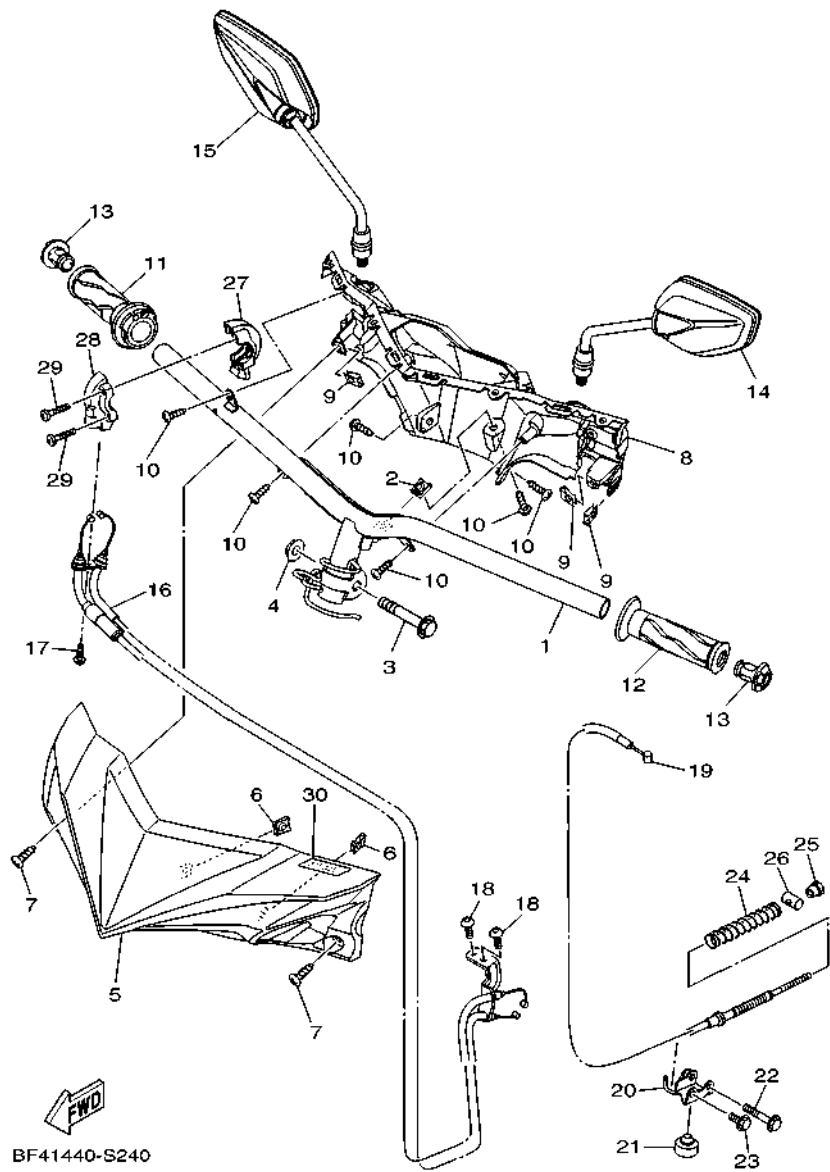
REF. NO.	PART NO.	DESCRIPTION	BF42				REMARKS
1	44P-F5338-00-33	CAST WHEEL, REAR	1				YB
2	94108-14809	TIRE (80/90-14 M/C 46P V280R)	1				VEE RUBBER
3	93900-00817	VALVE, RIM (TR412)	1				
4	54P-F5326-00	PIN, PIVOT	1				UR
	1GC-F5326-00	PIN, PIVOT	1				UR
5	95702-10500	NUT, FLANGE	1				
6	93210-07802	O-RING	1				
7	5LW-F530K-00	BRAKE SHOE SET	1				
8	90506-12001	SPRING, TENSION	1				
9	90506-15001	SPRING, TENSION	1				
10	10C-F5351-00	CAMSHAFT	1				
11	2PH-F5355-00	LEVER, CAMSHAFT	1				
12	5LW-F533A-00	PLATE, INDICATOR	1				
13	90206-14093	WASHER, WAVE	1				
14	90101-06046	BOLT	1				
15	90185-16800	NUT, SELF-LOCKING	1				
16	90201-16810	WASHER, PLATE	1				
17	90201-220J8	WASHER, PLATE	1				

FIG. 24 STEERING HANDLE & CABLE



REF. NO.	PART NO.	DESCRIPTION	BF42				REMARKS
1	BF4-F6110-00	HANDLE COMP.	1				
2	90183-05807	NUT, SPRING	1				
3	90105-10896	BOLT, FLANGE	1				
4	90185-10011	NUT, SELF-LOCKING	1				
5	BF4-F6143-00-P0	COVER, HANDLE UPPER 1	1				UR FOR RM7
	BF4-F6143-00-P4	COVER, HANDLE UPPER 1	1				UR FOR VPBC5
	BF4-F6143-00-P5	COVER, HANDLE UPPER 1	1				UR FOR DNP M1
	BF4-F6143-00-P6	COVER, HANDLE UPPER 1	1				UR FOR MC1
6	90183-05807	NUT, SPRING	2				
7	97707-50016	SCREW, TRUSS HEAD TAPPING	2				
8	BF4-F6145-00	COVER, HANDLE UPPER 2	1				
9	90183-05807	NUT, SPRING	3				
10	97707-50016	SCREW, TRUSS HEAD TAPPING	6				
11	B92-F6240-00	GRIP ASSY	1				
12	1VP-F6241-00	GRIP	1				
13	B92-F6246-00	END, GRIP	2				
14	2WB-F6280-00	REAR VIEW MIRROR ASSY (LEFT)	1				
15	2WB-F6290-00	REAR VIEW MIRROR ASSY (RIGHT)	1				
16	BF4-F6301-00	THROTTLE CABLE ASSY	1				
17	92012-05016	BOLT, BUTTON HEAD	1				
18	92012-05010	BOLT, BUTTON HEAD	2				
19	1VB-F6351-00	CABLE, BRAKE	1				
20	B92-F637G-00	HOLDER, WIRE	1				
21	B92-F6257-00	STOPPER	1				
22	95E32-06040	BOLT, FLANGE DEEP RECESS	1				
23	95E32-06014	BOLT, FLANGE DEEP RECESS	1				
24	90501-16003	SPRING, COMPRESSION	1				

FIG. 24 STEERING HANDLE & CABLE



BF41440-S240

REF. NO.	PART NO.	DESCRIPTION	BF42			REMARKS
25	90179-06411	NUT	1			
26	90249-12008	PIN	1			
27	5P2-F6281-00	CAP, GRIP UPPER	1			
28	5P2-F6282-00	CAP, GRIP UNDER	1			
29	98502-05025	SCREW, PAN HEAD	2			
30	B92-F1737-00	EMBLEM	1			

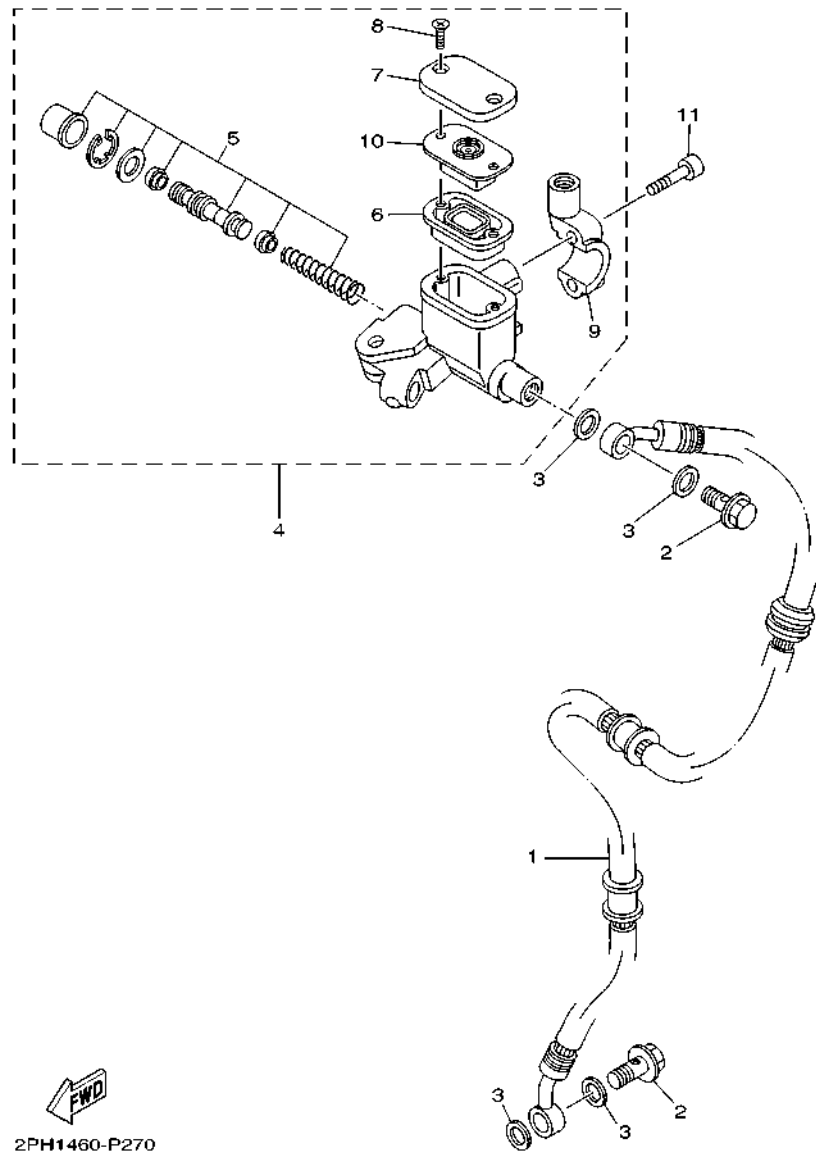
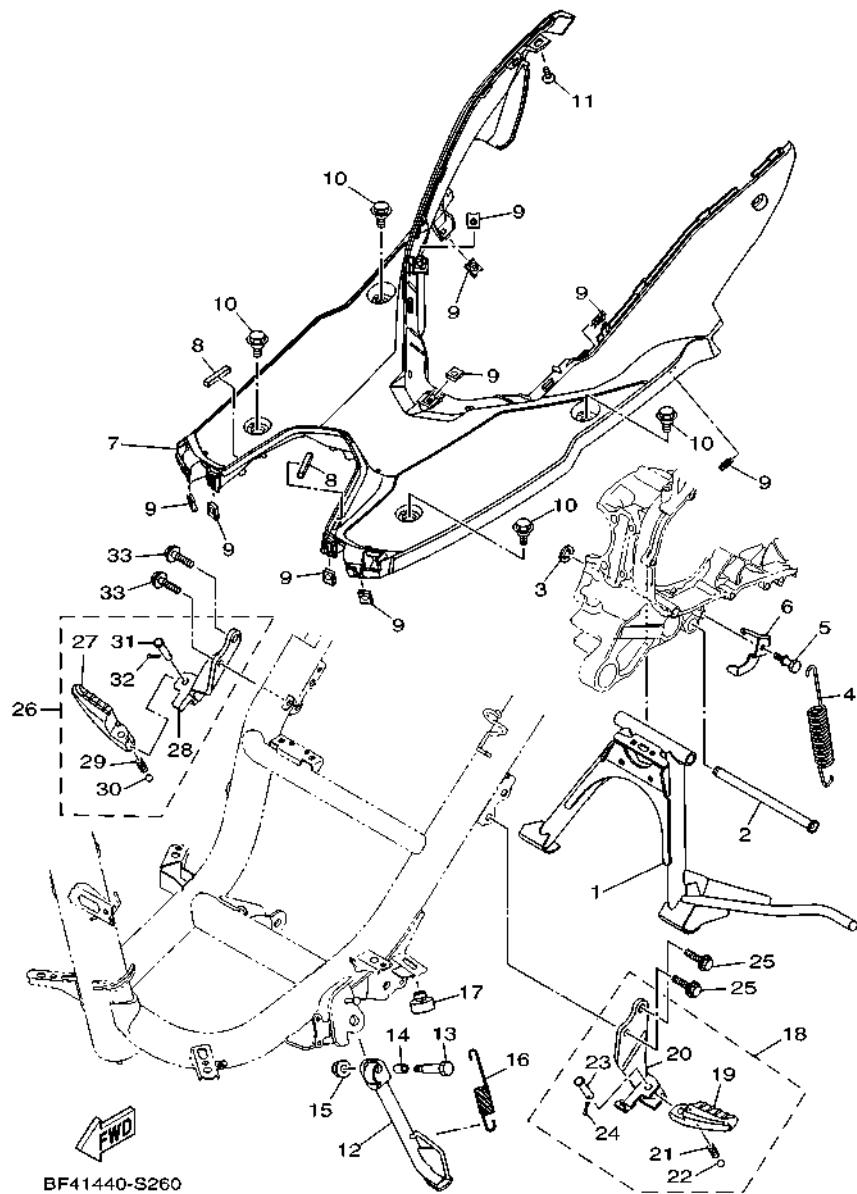


FIG. 25 FRONT MASTER CYLINDER

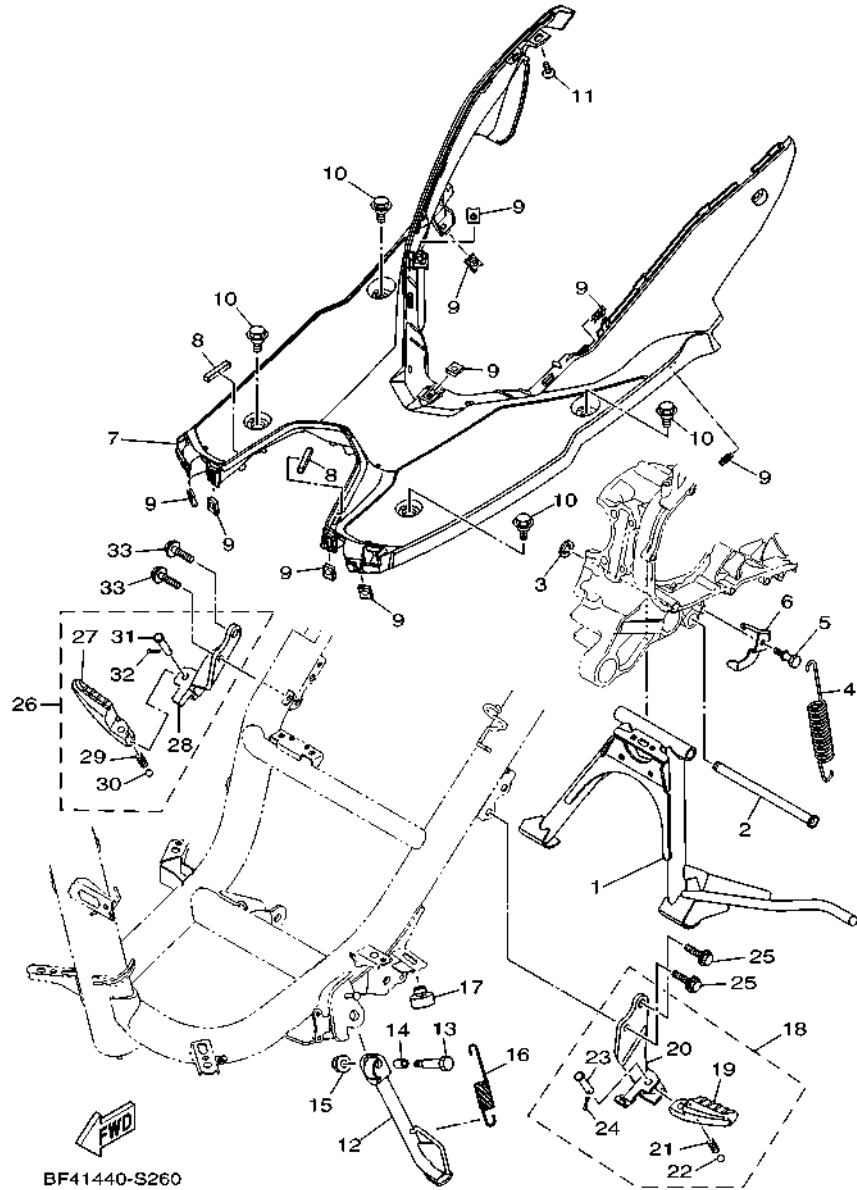
REF. NO.	PART NO.	DESCRIPTION	BF42				REMARKS
1	2PH-F5872-10	HOSE, BRAKE 1	1				
2	90401-10015	BOLT, UNION	2				
3	90201-10118	WASHER, PLATE	4				
4	5P0-F583T-03	MASTER CYLINDER ASSY	1				
5	5P0-W0041-00	.CYLINDER KIT, MASTER	1				
6	5P0-F5854-00	.DIAPHRAGM, RESERVOIR	1				
7	5P0-F5852-00	.CAP, RESERVOIR	1				
8	36Y-2589H-00	.SCREW	2				
9	5TL-F5867-01	.BRACKET, MASTER CYLINDER	1				
10	5P0-F5855-00	.BUSH,DIAPHRAGM	1				
11	91312-06025	BOLT, HEXAGON SOCKET HEAD	2				

FIG. 26 STAND & FOOTREST



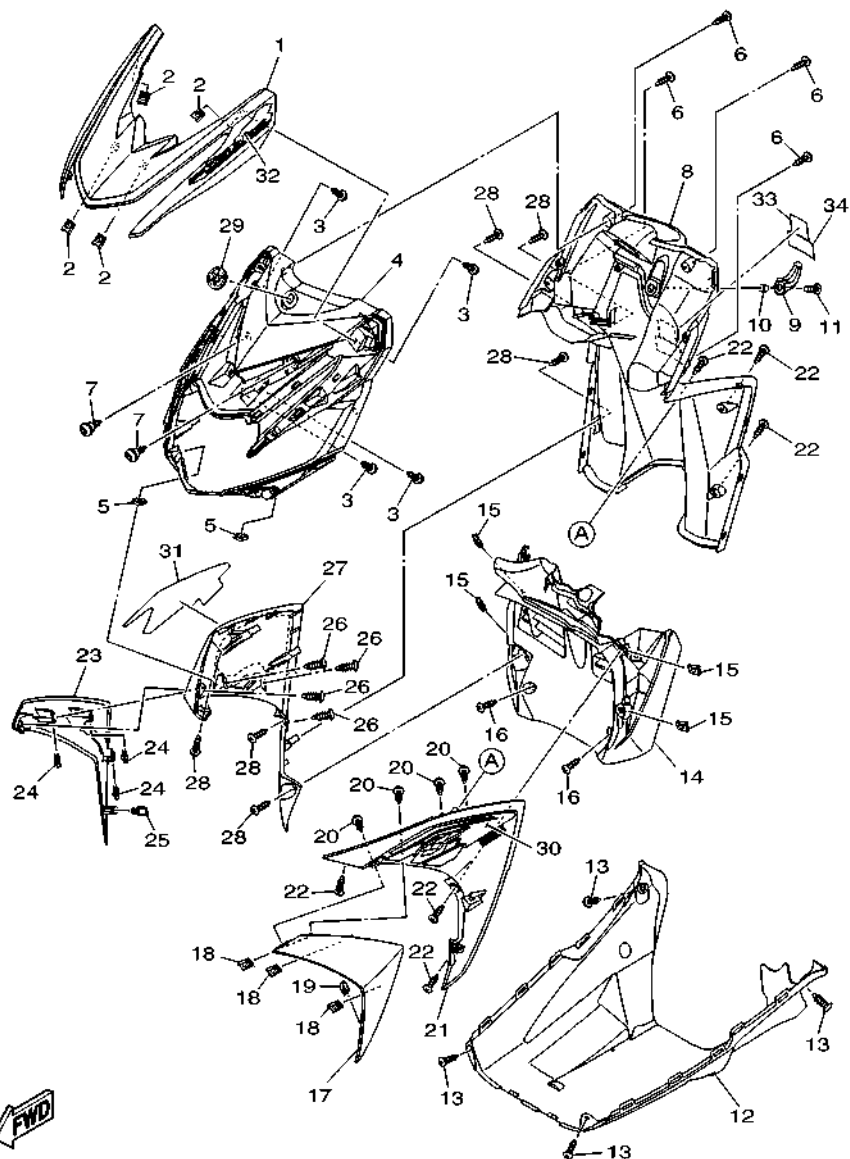
REF. NO.	PART NO.	DESCRIPTION	BF42				REMARKS
1	B92-F7111-00	STAND, MAIN	1				
2	2PH-F7112-00	SHAFT, MAIN STAND	1				
3	99002-09600	CIRCLIP	1				
4	90506-35821	SPRING, TENSION	1				
5	5LW-F7254-00	HOOK	1				
6	B92-F7267-00	GUIDE, WIRE	1				
7	BF4-F7481-00	BOARD, FOOTREST	1				
8	90520-08004	DAMPER, PLATE	2				
9	90183-05807	NUT, SPRING	9				
10	90109-068B5	BOLT	4				
11	97707-50016	SCREW, TRUSS HEAD TAPPING	1				
12	B92-F7311-00	STAND, SIDE	1				
13	90101-08847	BOLT	1				
14	90387-08820	COLLAR	1				
15	95602-08200	NUT, U FLANGE	1				
16	90506-20514	SPRING, TENSION	1				
17	B92-F6257-00	STOPPER	1				
18	B92-F7430-00	REAR FOOTREST ASSY 1	1				
19	B92-F7431-00	.FOOTREST, REAR 1	1				
20	B92-F7432-00	.BRACKET 1	1				
21	90501-12743	.SPRING, COMPRESSION	1				
22	93501-04823	.BALL	1				
23	91701-08035	.PIN	1				
24	91401-25015	.PIN, COTTER	1				
25	95D02-08030	BOLT, FLANGE DEEP RECESS	2				
26	B92-F7440-00	REAR FOOTREST ASSY 2	1				
27	B92-F7441-00	.FOOTREST, REAR 2	1				

FIG. 26 STAND & FOOTREST



REF. NO.	PART NO.	DESCRIPTION	BF42				REMARKS
28	B92-F7442-00	.BRACKET 2	1				
29	90501-12743	.SPRING, COMPRESSION	1				
30	93501-04823	.BALL	1				
31	91701-08035	.PIN	1				
32	91401-25015	.PIN, COTTER	1				
33	95D02-08030	BOLT, FLANGE DEEP RECESS	2				

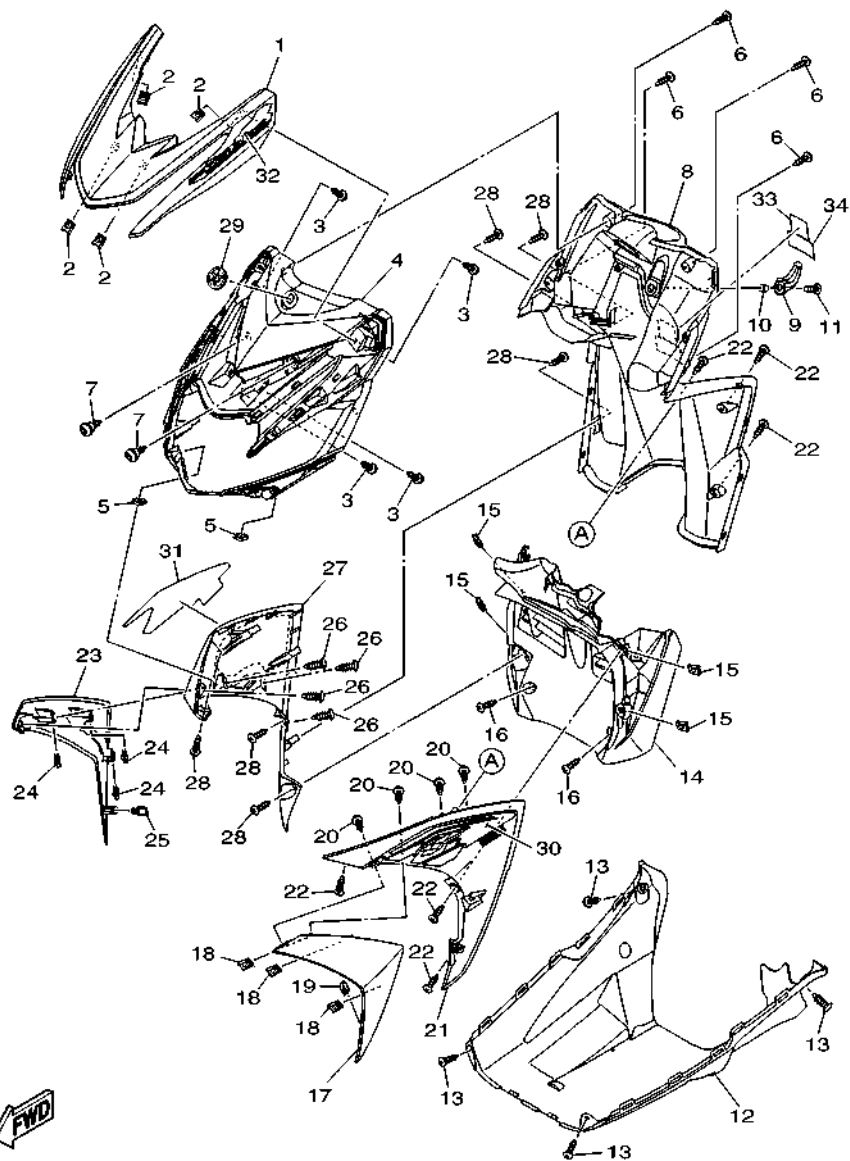
FIG. 27 LEG SHIELD



FWD
BF42440-T270

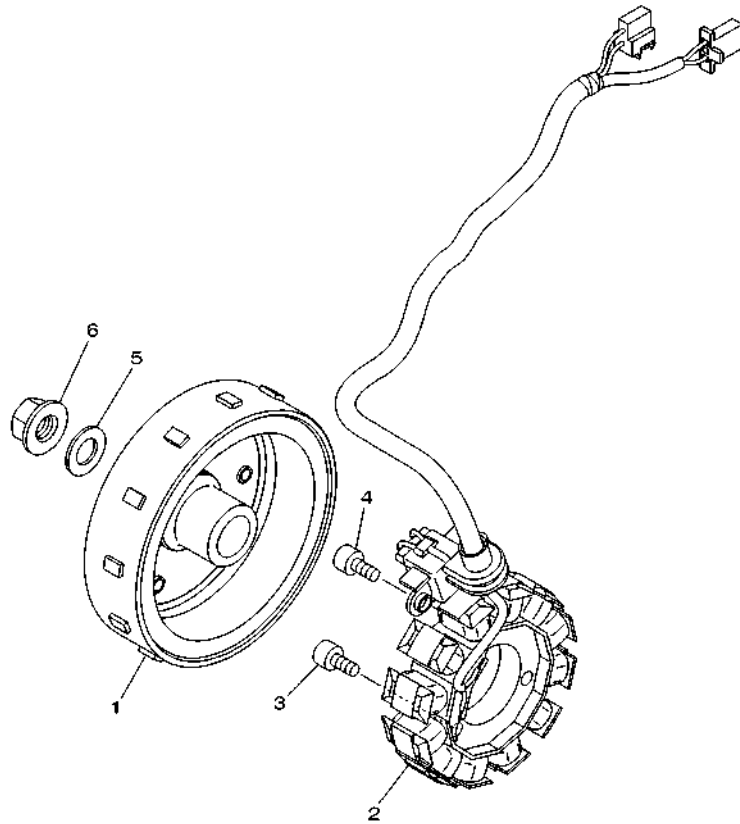
REF. NO.	PART NO.	DESCRIPTION	BF42			REMARKS
1	BF4-F3391-00-P0	PANEL, FRONT	1			UR FOR RM7
	BF4-F3391-00-P4	PANEL, FRONT	1			UR FOR VPBC5
	BF4-F3391-00-P5	PANEL, FRONT	1			UR FOR DNPM1
	BF4-F3391-00-P6	PANEL, FRONT	1			UR FOR MC1
2	90183-05807	NUT, SPRING	4			
3	97702-50014	SCREW, TAPPING	4			
4	BF4-F8311-00	LEG SHIELD 1	1			
5	90183-05807	NUT, SPRING	2			
6	97707-50016	SCREW, TRUSS HEAD TAPPING	4			
7	90109-068A3	BOLT	2			
8	BF4-F8300-00	LEG SHIELD ASSY	1			
9	B92-F8257-00	HOOK 1	1			
10	B92-F8373-00	COLLAR	1			
11	90111-06865	BOLT,HEX. SOCKET BUTTON	1			
12	B92-F8385-00	COVER, UNDER	1			
13	97707-50016	SCREW, TRUSS HEAD TAPPING	4			
14	BF4-F1552-00	FENDER, INNER	1			
15	90183-05807	NUT, SPRING	4			
16	97707-50016	SCREW, TRUSS HEAD TAPPING	2			
17	BF4-F8345-00	MOLE 1	1			
18	90183-05807	NUT, SPRING	3			
19	5P0-F8379-00	HOOK	1			
20	97707-50014	SCREW, TRUSS HEAD TAPPING	4			
21	BF4-F835U-00-P0	PANEL 1	1			UR RM7
	BF4-F835U-00-P3	PANEL 1	1			UR VPBC5,DNPM1
	BF4-F835U-00-P4	PANEL 1	1			UR MC1
22	97707-50016	SCREW, TRUSS HEAD TAPPING	6			

FIG. 27 LEG SHIELD



BF42440-T270

REF. NO.	PART NO.	DESCRIPTION	BF42				REMARKS
23	BF4-F8346-00	MOLE 2	1				
24	90183-05807	NUT, SPRING	3				
25	5P0-F8379-00	HOOK	1				
26	97702-50014	SCREW, TAPPING	4				
27	BF4-F835V-00-P0	PANEL 2	1				UR RM7
	BF4-F835V-00-P3	PANEL 2	1				UR VPBC5,DNPM1
	BF4-F835V-00-P4	PANEL 2	1				UR MC1
28	97707-50016	SCREW, TRUSS HEAD TAPPING	6				
29	5TL-F3108-00	EMBLEM	1				
30	BF4-F8391-40	GRAPHIC 1	1				UR FOR RM7
	BF4-F8391-50	GRAPHIC 1	1				UR FOR VPBC5
	BF4-F8391-60	GRAPHIC 1	1				UR FOR DNPM1
	BF4-F8391-70	GRAPHIC 1	1				UR FOR MC1
31	BF4-F8392-40	GRAPHIC 2	1				UR FOR RM7
	BF4-F8392-50	GRAPHIC 2	1				UR FOR VPBC5
	BF4-F8392-60	GRAPHIC 2	1				UR FOR DNPM1
	BF4-F8392-70	GRAPHIC 2	1				UR FOR MC1
32	BF4-F8393-40	GRAPHIC 3	1				UR FOR RM7
	BF4-F8393-50	GRAPHIC 3	1				UR FOR VPBC5
	BF4-F8393-60	GRAPHIC 3	1				UR FOR DNPM1
	BF4-F8393-70	GRAPHIC 3	1				UR FOR MC1
33	BF4-F1568-00	LABEL, WARNING	1				
34	BF4-F1668-00	LABEL, TIRE	1				

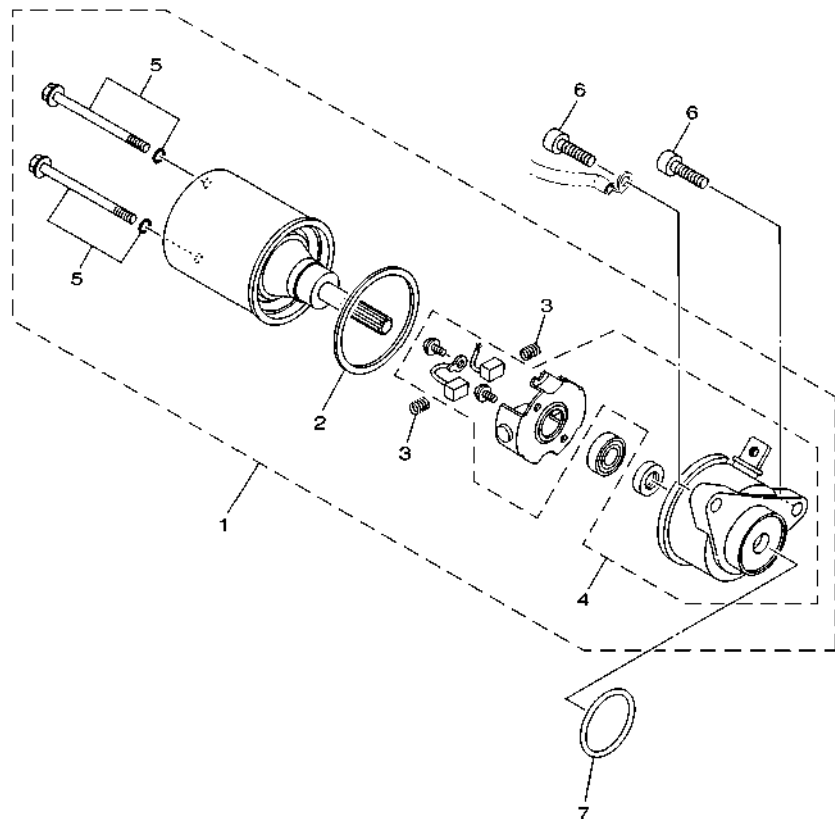



 2PH1460-P300

FIG. 28 GENERATOR

REF. NO.	PART NO.	DESCRIPTION	BF42				REMARKS
1	2PH-H1450-20	ROTOR ASSY	1				
2	2PH-H1410-10	STATOR ASSY	1				
3	91332-06020	BOLT	3				
4	91332-06020	BOLT	2				
5	90201-12823	WASHER, PLATE	1				
6	90179-12004	NUT	1				

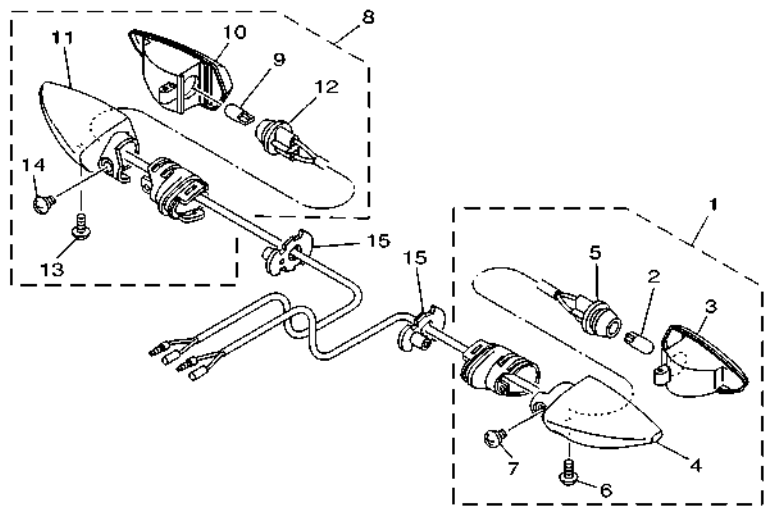
FIG. 29 STARTING MOTOR



REF. NO.	PART NO.	DESCRIPTION	BF42				REMARKS
1	2SX-H1890-00	MOTOR ASSY	1				
2	1KP-H1847-00	.O-RING	1				
3	1KP-H1617-00	.SPRING, BRUSH	2				
4	2SX-H1830-00	.FRONT BRACKET ASSY	1				
5	2SX-H1828-00	.SCREW 2	2				
6	91332-06020	BOLT	2				
7	93210-29803	O-RING	1				

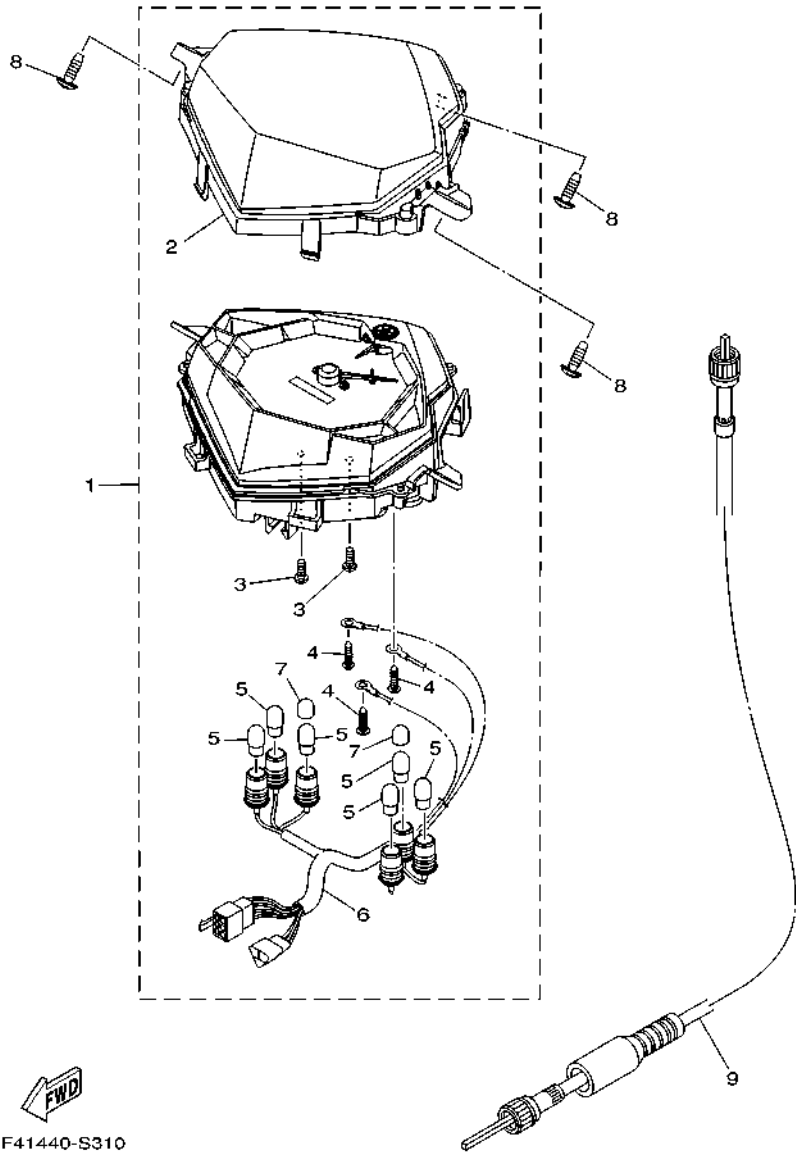

2SX1460-P290

FIG. 30 FLASHER LIGHT



REF. NO.	PART NO.	DESCRIPTION	BF42				REMARKS
1	55D-H3330-01	REAR FLASHER LIGHT ASSY 1	1				
2	55D-H3311-00	.BULB, FLASHER (12V-10W)	1				
3	55D-H333A-00	.LENS COMP 1	1				
4	55D-H3323-00	.BODY	1				
5	55D-H333E-01	.CORD ASSY	1				
6	55D-H3333-00	.SCREW, LENS FITTING	1				
7	55D-H3358-00	.SCREW, SPECIAL	1				
8	55D-H3340-01	REAR FLASHER LIGHT ASSY 2	1				
9	55D-H3311-00	.BULB, FLASHER (12V-10W)	1				
10	55D-H334A-00	.LENS COMP 2	1				
11	55D-H332M-00	.BODY 2	1				
12	55D-H334E-01	.CORD ASSY	1				
13	55D-H3333-00	.SCREW, LENS FITTING	1				
14	55D-H3358-00	.SCREW, SPECIAL	1				
15	1VP-H3318-00	STAY, FLASHER 1	2				


BF41440-S300



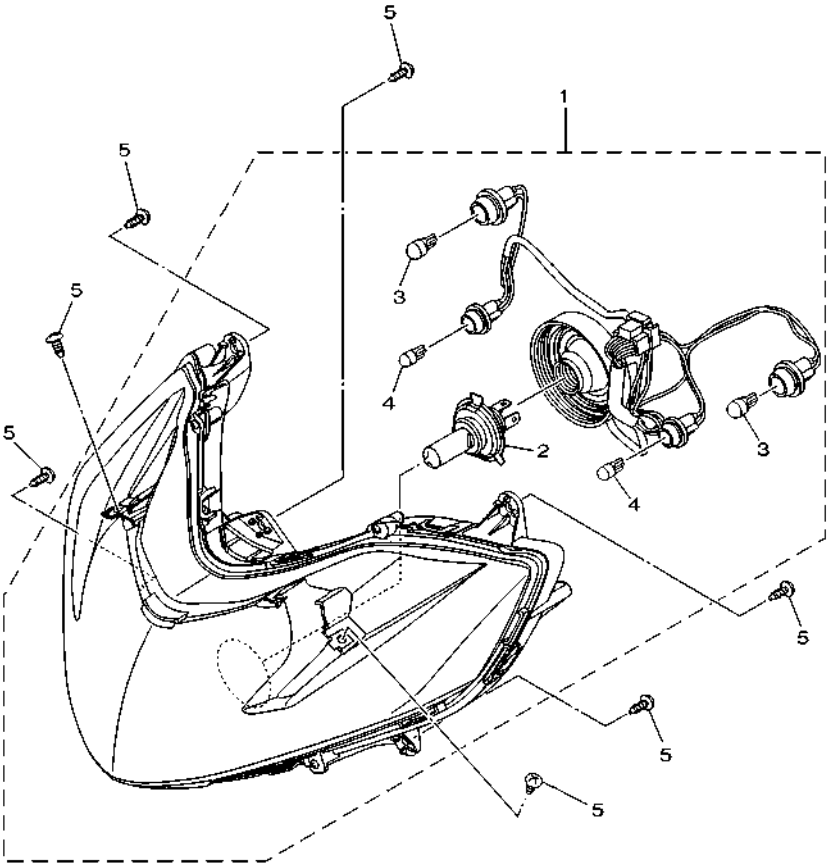

BF41440-S310

FIG. 31 METER

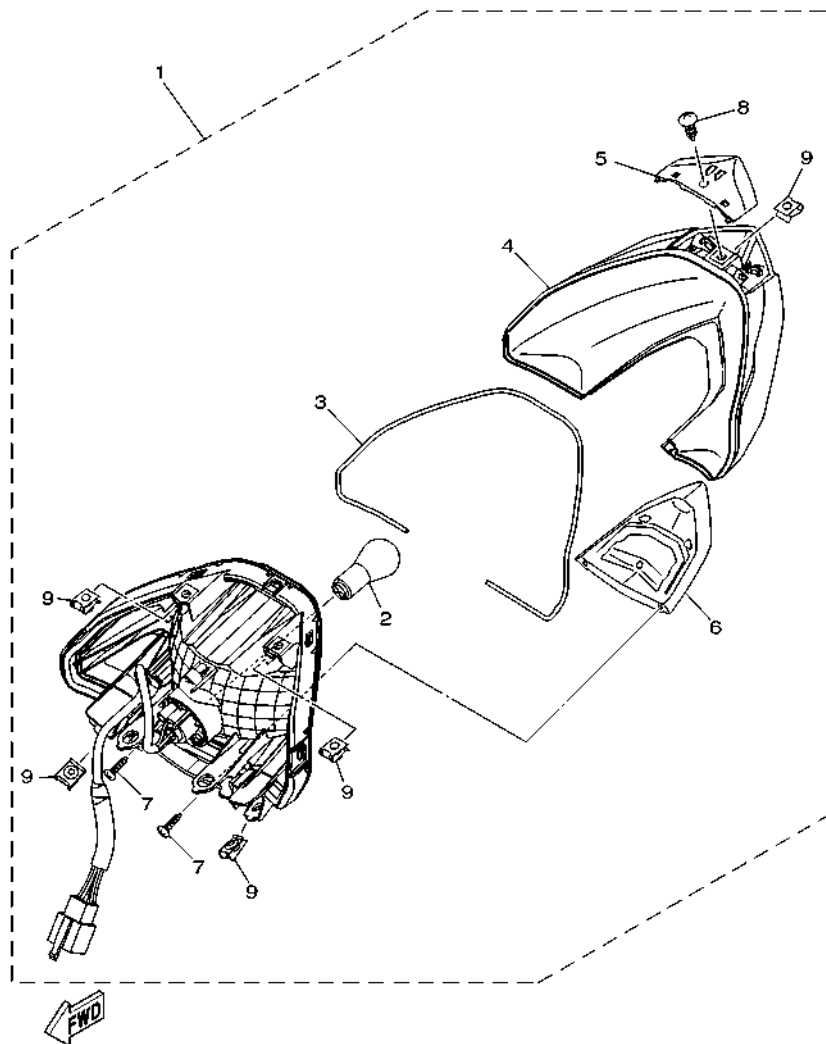
REF. NO.	PART NO.	DESCRIPTION	BF42				REMARKS
1	BF4-H3510-00	SPEEDOMETER ASSY	1				
2	BF4-H3511-00	.LENS, SPEEDOMETER	1				
3	1VP-H3358-00	.SCREW, SPECIAL	2				
4	1VP-H3645-00	.SCREW	3				
5	5LW-H3518-00	.BULB, METER (T10 12V-1.7W)	6				
6	BF4-H3509-00	.SOCKET CORD ASSY	1				
7	1VP-H3606-00	.CAP, BULB	2				
8	97707-50016	SCREW, TRUSS HEAD TAPPING	3				
9	2BR-H3550-00	SPEEDOMETER CABLE ASSY	1				

FIG. 32 HEADLIGHT

REF. NO.	PART NO.	DESCRIPTION	BF42					REMARKS
1	BF4-H4300-00	HEADLIGHT ASSY	1					
2	1VP-H4314-00	.BULB, HEADLIGHT (12V 35/35W)	1					
3	55D-H3311-00	.BULB, FLASHER (12V-10W)	2					
4	1VP-H4147-00	.BULB, FLASHER (12V-16W)	2					
5	97702-50014	SCREW, TAPPING	7					



FWD
BF41440-S320

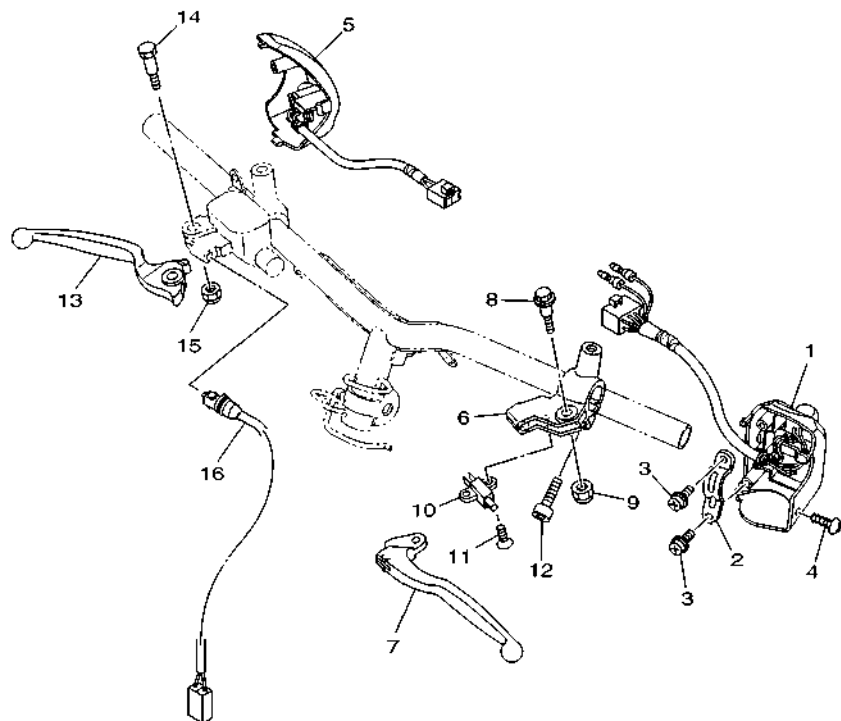


BF41440-S330

FIG. 33 TAILLIGHT

REF. NO.	PART NO.	DESCRIPTION	BF42				REMARKS
1	BF4-H4710-00	TAILLIGHT UNIT ASSY	1				
2	1VP-H4714-00	.BULB, TAILLIGHT (12V-21/5W)	1				
3	BF4-H4723-00	.GASKET, TAIL LENS	1				
4	BF4-H4721-00	.LENS, TAILLIGHT	1				
5	BF4-H4516-00	.COVER, TAILLIGHT	1				
6	BF4-H4716-00	.COVER, TAILLIGHT	1				
7	97702-03012	.SCREW, TAPPING	2				
8	97707-50012	.SCREW, TRUSS HEAD TAPPING	1				
9	90183-05807	.NUT, SPRING	5				

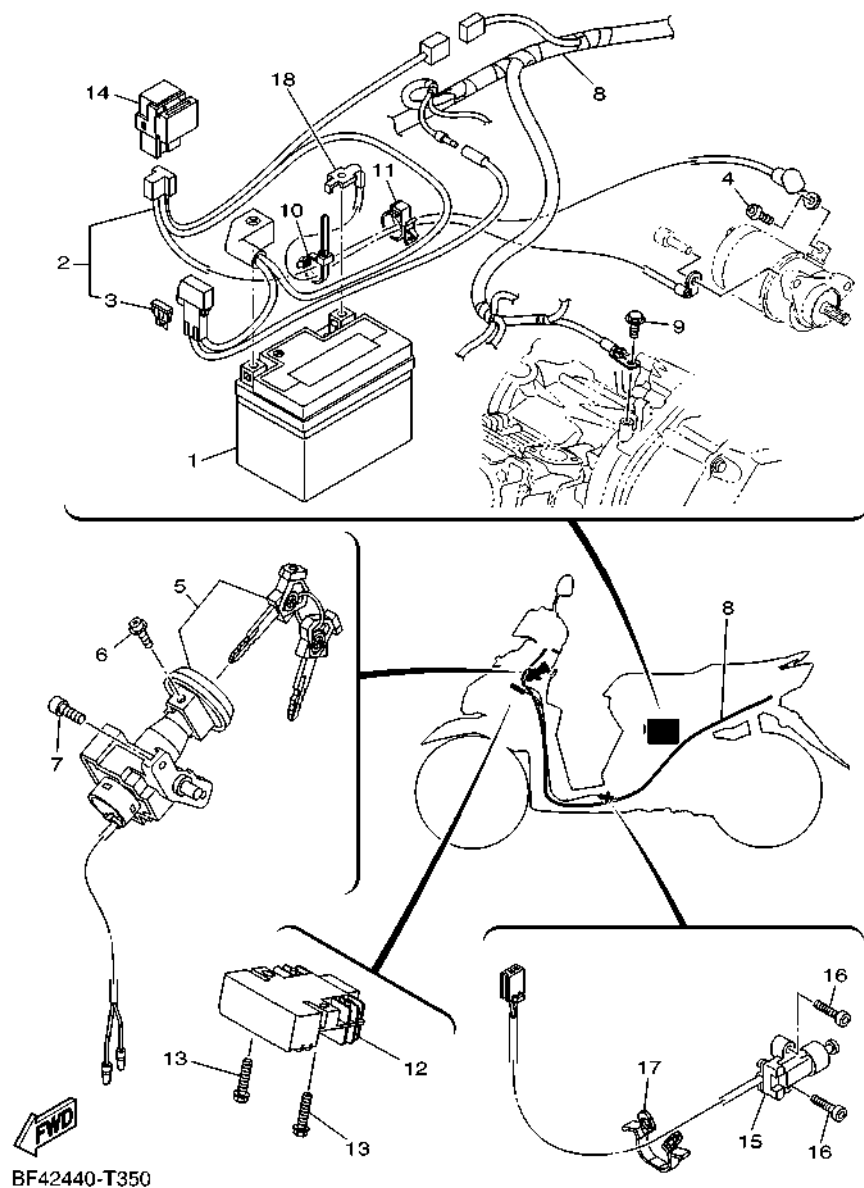
FIG. 34 HANDLE SWITCH & LEVER



REF. NO.	PART NO.	DESCRIPTION	BF42				REMARKS
1	1KP-H3973-10	SWITCH, HANDLE 3	1				
2	1S8-H3955-01	BRACKET 1	1				
3	97602-05216	SCREW, PAN HEAD WITH WASHER	2				
4	97707-50016	SCREW, TRUSS HEAD TAPPING	1				
5	1KP-H3976-10	SWITCH, HANDLE 1	1				
6	5TL-H2911-20	HOLDER, LEVER 1	1				
7	5TL-H3912-20	LEVER 1	1				
8	90109-06814	BOLT	1				
9	95602-06100	NUT, S/L	1				
10	5TL-H3980-10	FRONT STOP SWITCH ASSY	1				
11	9870M-03008	SCREW, FLAT HEAD	1				
12	91332-06020	BOLT	1				
13	5TL-H3922-00	LEVER 2	1				
14	90109-06255	BOLT	1				
15	95602-06100	NUT, S/L	1				
16	54P-H3980-00	FRONT STOP SWITCH ASSY	1				

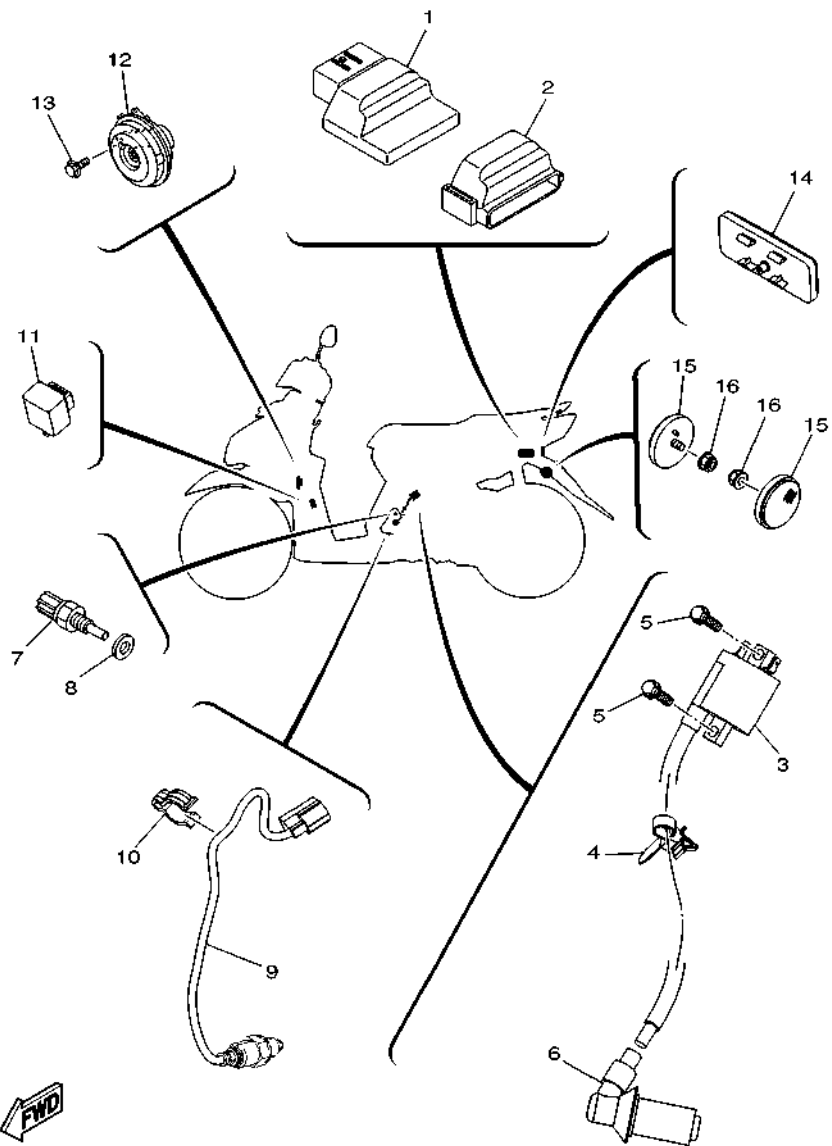

BF41440-S340

FIG. 35 ELECTRICAL 1



REF. NO.	PART NO.	DESCRIPTION	BF42	REMARKS
1	2CB-H2100-01	BATTERY ASSY (YUASA YTZ4V)	1	UR
	55D-H2100-00	BATTERY ASSY (PINACO PTZ5S)	1	UR
2	BF4-H2115-00	WIRE, PLUS LEAD	1	
3	1VP-H2151-00	.FUSE (15A)	1	
4	92012-05008	BOLT, BUTTON HEAD	1	
5	1VB-XH250-01	MAIN SW. STRG. LOCK SUB ASSY	1	
6	97602-05208	SCREW, PAN HEAD WITH WASHER	1	
7	90149-06309	SCREW	2	
8	BF4-H2590-00	WIRE HARNESS ASSY	1	
9	95E32-06012	BOLT, FLANGE DEEP RECESS	1	
10	90464-34002	CLAMP	1	
11	90464-16006	CLAMP	1	
12	2BL-H1960-00	RECTIFIER & REGULATOR ASSY	1	
13	95E32-06025	BOLT, FLANGE DEEP RECESS	2	
14	2PH-H1940-01	STARTER RELAY ASSY	1	
15	1LB-H2566-01	SWITCH, SIDE STAND	1	
16	91312-05016	BOLT, HEXAGON SOCKET HEAD	2	
17	90464-07805	CLAMP	1	
18	BF4-H2116-00	WIRE, MINUS LEAD	1	

FIG. 36 ELECTRICAL 2



BF42440-T360

REF. NO.	PART NO.	DESCRIPTION	BF42				REMARKS
1	2SX-H591A-00	ENGINE CONTROL UNIT ASSY	1				
2	2PH-H5546-00	BAND	1				
3	2PH-H2310-00	IGNITION COIL ASSY	1				
4	90464-12810	CLAMP	1				
5	95E32-06020	BOLT, FLANGE DEEP RECESS	2				
6	2PH-H2370-10	PLUG CAP ASSY	1				
7	54P-H3591-00	THERMO UNIT	1				
8	90430-10806	GASKET	1				
9	2DP-H592A-10	SENSOR, OXYGEN	1				
10	90464-16807	CLAMP	1				
11	1VP-83350-00	FLASHER RELAY ASSY	1				
12	2BR-H3371-00	HORN	1				
13	95D02-06010	BOLT, FLANGE DEEP RECESS	1				
14	55D-H5130-00	REAR REFLECTOR ASSY	1				
15	2FC-H5111-00	REFLECTOR, FRONT 1	2				
16	90185-05803	NUT, SELF-LOCKING	2				

NUMERICAL INDEX

PART NO.	REF. NO.	PART NO.	REF. NO.	PART NO.	REF. NO.	PART NO.	REF. NO.	PART NO.	REF. NO.	PART NO.	REF. NO.
5LW-15659-01	10 - 6	2PH-E2651-00	5 - 1	2PH-E5362-10	9 - 19	2PH-E7465-10	12 - 14	BF4-F173E-70	16 - 22	5D9-F414G-10	19 - 2
36Y-2589H-00	25 - 8	2PH-E2652-00	5 - 3	5LW-E5363-00	9 - 16	2SX-E7611-10	12 - 6	BF4-F173F-40	16 - 23	B92-F41B1-00	19 - 12
1VP-83350-00	36 - 11	2PH-E2653-00	5 - 4	5LW-E5363-00	9 - 6	2PH-E7620-00	12 - 1	BF4-F173F-50	16 - 23	54P-F4491-00	19 - 10
B92-E1102-00	1 - 1	2PH-E2658-00	5 - 2		10 - 3	2PH-E7623-00	12 - 3	BF4-F173F-60	16 - 23	4YY-F4610-00	19 - 17
2PH-E111F-00	4 - 4	2PH-E2659-10	5 - 6	2PH-E5373-00	9 - 7	2SX-E7632-10	12 - 2	BF4-F173F-70	16 - 23	4YY-F4612-00	19 - 18
2BM-E111G-00	1 - 12	2SX-E2659-10	5 - 6	2SX-E5373-00	9 - 7	2PH-E7641-00	12 - 25	BF4-F1741-00	16 - 15	BF4-F4704-00	20 - 5
2PH-E112F-00	4 - 5	2PH-E2668-10	5 - 7	2PH-E5407-00	10 - 16	2PH-E7644-00	12 - 19	54P-F2141-00	14 - 8	BF4-F470F-00	20 - 2
1DR-E1133-10	1 - 2	2PH-E3300-10	6 - 1	B92-E5411-00	10 - 1	2PH-E7645-10	12 - 30	10C-F2210-30	17 - 1	2WB-F4727-00	20 - 11
2PH-E1165-00	1 - 8	2BM-E3324-10	2 - 8	2PH-E5413-00	10 - 19	2PH-E7653-00	12 - 4	5MX-F2216-00	9 - 4	B92-F472T-00	20 - 19
2PH-E1166-10	7 - 34	54P-E3411-00	6 - 5	2PH-E5417-00	9 - 21	BJ8-E7660-00	12 - 11	1VB-F3100-01	18 - 1	BF4-F4730-00	20 - 1
2SX-E1166-10	7 - 34	5LW-E3452-00	2 - 6	2PH-E5421-00	9 - 34	2PH-E7664-00	12 - 15	5TL-F3108-00	27 - 29	44P-F4741-00	20 - 3
2PH-E1169-00	1 - 9	BF4-E3475-00	6 - 2	2PH-E5423-00	9 - 28	2PH-E7668-00	12 - 20	5VW-F3110-00	18 - 8	4HF-F4741-00	20 - 4
2BL-E1181-00	1 - 16	2PH-E3556-10	7 - 3	2PH-E5451-10	10 - 2	BJ8-E7670-00	12 - 12	5VW-F3111-00	18 - 19	1S8-F4768-00	20 - 14
2PH-E1191-00	1 - 7	2PH-E3557-10	7 - 14	2PH-E5453-10	9 - 24	2PH-E7674-00	12 - 5	1VB-F3126-00	18 - 5	BF4-F4773-00-P0	20 - 17
2BM-E1193-00	1 - 13	5LW-E3569-00	5 - 12	2PH-E5461-10	9 - 35	2PH-E7674-10	12 - 16	1VB-F3136-00	18 - 2	BF4-F4773-00-P2	20 - 17
2PH-E119E-10	1 - 11	2PH-E3585-10	7 - 1	2PH-E5471-00	10 - 12	2PH-E7678-00	12 - 21	1VB-F3141-00	18 - 15	BF4-F4773-00-P3	20 - 17
2PH-E1311-10	1 - 20	2PH-E3593-00	7 - 5	2PH-E5472-00	10 - 14	2PH-E7678-10	12 - 23	5LL-F3144-00	18 - 14	40D-F4780-01	20 - 12
2PH-E1351-10	1 - 21	2PH-E3595-00	7 - 2	2PH-E5473-00	10 - 11	2PH-E7683-00	12 - 17	4UV-F3145-00	18 - 3	BF4-F478E-00	20 - 15
2PH-E1400-31	2 - 1	2PH-E3750-00	7 - 17	2PH-E5495-00	10 - 15	2PH-E7684-00	12 - 18		18 - 6	1VB-F5168-00-33	21 - 1
2PH-E1422-10	2 - 5	2PH-E3761-00	7 - 9	2BM-E5512-00	11 - 4	BF4-F1110-00	14 - 1	2JG-F3147-00	18 - 20	2PH-F5181-00	21 - 8
2PH-E1603-10	2 - 13	5LW-E3769-00	9 - 20	2PH-E5520-20	11 - 1	BF4-F1164-00	18 - 35	31D-F3152-00	18 - 11	5TL-F5190-01	21 - 10
2PH-E1631-00	2 - 10	2PH-E3770-00	7 - 8	1GC-E5521-00	11 - 5	2PH-F1410-20	14 - 3	5P0-F3156-00	18 - 4	5LW-F530K-00	23 - 7
2PH-E1633-00	2 - 11	2PH-E3907-00	19 - 6	44D-E5521-00	11 - 5	54P-F1459-00	14 - 5		18 - 7	1GC-F5326-00	23 - 4
2PH-E1651-20	2 - 4	54P-E3915-00	19 - 7	2PH-E5570-00	11 - 2	BF4-F1511-00-P0	15 - 1	2JG-F3157-00	18 - 10	54P-F5326-00	23 - 4
2BM-E1681-10	2 - 2	54P-E3938-00	7 - 12	2PH-E5570-11	11 - 2	BF4-F1511-00-P4	15 - 1	509-F3158-L0	18 - 12	44P-F5338-00-33	23 - 1
2PH-E2111-00	3 - 1	2PH-E3971-00	19 - 5	1GC-E5598-00	11 - 3	BF4-F1511-00-P5	15 - 1	4D0-F3165-00	18 - 22	5LW-F533A-00	23 - 12
54P-E2113-00	3 - 4	54P-E4137-00	7 - 13	44D-E5598-00	11 - 3	BF4-F1511-00-P6	15 - 1	1VB-F3170-00	18 - 9	10C-F5351-00	23 - 10
1KP-E2117-00	3 - 6	2PH-E4146-00	7 - 18	2PH-E5601-10	11 - 6	BF4-F1552-00	27 - 14	31B-F3181-00	18 - 13	2PH-F5355-00	23 - 11
54P-E2117-00	3 - 6	54P-E4147-00	7 - 10	2BL-E5620-10	11 - 12	BF4-F1568-00	27 - 33	4D0-F3340-00	18 - 16	2BM-F5802-00	22 - 4
5TL-E2118-00	3 - 5	5CA-E4147-00	7 - 11	2PH-E5630-00	11 - 14	BF4-F1611-00	15 - 3	4D0-F3346-00	18 - 18	5YP-F5803-50	22 - 5
54P-E2119-00	3 - 3	2PH-E4411-00	7 - 19	5MX-E5657-00	12 - 32	B92-F1621-00	15 - 5	1VB-F334G-00	18 - 21	2BM-F5805-00	22 - 9
2PH-E2121-10	3 - 2	2PH-E4412-00	7 - 20	1GC-E5659-00	10 - 6	BF4-F1668-00	27 - 34	BF4-F3391-00-P0	27 - 1	2PH-F580U-10	22 - 3
2PH-E2126-00	3 - 7	2PH-E4437-00	7 - 21	5MX-E5673-00	11 - 15	BF4-F1711-00-P0	16 - 5	BF4-F3391-00-P4	27 - 1	5TL-F582U-10	22 - 1
2PH-E2146-00	3 - 11	4ST-E443E-00	10 - 4	2PH-E5744-00	12 - 22	BF4-F1711-00-P3	16 - 5	BF4-F3391-00-P5	27 - 1	5P0-F583T-03	25 - 4
2PH-E2151-00	3 - 8	5TL-E443E-00	7 - 28	2PH-E6111-00	13 - 9	BF4-F1711-00-P4	16 - 5	BF4-F3391-00-P6	27 - 1	5P0-F5852-00	25 - 7
33S-E2159-01	3 - 10	5TP-E443G-00	7 - 25	2PH-E6111-10	13 - 9	BF4-F1711-00-P5	16 - 5	156-F3411-00	18 - 17	5P0-F5854-00	25 - 6
33S-E2159-10	3 - 10	2PH-E4450-20	7 - 22	2PH-E6523-00	12 - 9	BF4-F171A-00	16 - 3	4RT-F3411-10	18 - 26	5P0-F5855-00	25 - 10
2PH-E2170-00	4 - 1	2PH-E4452-00	7 - 24	2PH-E6611-00	12 - 24	BF4-F171E-00	16 - 20	1KL-F3412-10	18 - 23	5TL-F5867-01	25 - 9
2PH-E2176-01	4 - 8	2PH-E4453-00	7 - 23	BJ8-E6620-00	12 - 7	BF4-F1721-00-P0	16 - 8	4RT-F3412-10	18 - 25	2PH-F5872-10	25 - 1
2BM-E2210-10	4 - 12	B92-E4613-00	8 - 4	2PH-E6626-00	12 - 8	BF4-F1721-00-P3	16 - 8	BF4-F3415-00	18 - 29	BF4-F5875-00	18 - 31
2BM-E2210-20	4 - 12	B92-E4711-00	8 - 1	2PH-E6819-00	12 - 10	BF4-F1721-00-P4	16 - 8	3AY-F3416-00	18 - 28	1VB-F5876-00	18 - 33
2PH-E2213-10	4 - 14	B92-E4718-00	8 - 2	2PH-E7211-00	13 - 4	BF4-F1721-00-P5	16 - 8	1P6-F341E-10	18 - 27	2BM-F5917-00	22 - 6
5MX-E2222-00	4 - 13	2PH-E5113-00	9 - 18	2PH-E7211-10	13 - 4	BF4-F172W-00	16 - 1	5VL-F341E-10	18 - 24	2BM-F5919-00	22 - 11
52B-E2228-00	4 - 16	2PH-E5150-00	9 - 1	2PH-E7410-00	13 - 1	BF4-F1731-00	16 - 11	B92-F4110-00	19 - 1	5YP-F5924-10	22 - 12
54P-E2228-00	4 - 16	2PH-E5155-00	9 - 2	2PH-E7410-10	13 - 1	B92-F1737-00	24 - 30	5D9-F414G-00	19 - 2	5YP-F5925-01	22 - 10
54P-E2231-00	4 - 10	2PH-E5191-10	10 - 7	2PH-E7421-00	13 - 3	BF4-F173E-40	16 - 22		19 - 3	5YP-F5937-00	22 - 7
2PH-E2241-00	4 - 11	2PH-E5316-00	10 - 13	2PH-E7421-10	13 - 3	BF4-F173E-50	16 - 22	B92-F414G-00	19 - 13	BF4-F6110-00	24 - 1
2PH-E2611-10	5 - 10	54P-E5351-00	6 - 4	2PH-E7465-00	12 - 13	BF4-F173E-60	16 - 22	54P-F414G-10	19 - 9	BF4-F6143-00-P0	24 - 5

NUMERICAL INDEX

PART NO.	REF. NO.	PART NO.	REF. NO.	PART NO.	REF. NO.	PART NO.	REF. NO.	PART NO.	REF. NO.	PART NO.	REF. NO.
BF4-F6143-00-P4	24 - 5	BF4-F8391-40	27 - 30	1VP-H3358-00	31 - 3	90109-068B4	15 - 4	90206-14093	23 - 13	91312-06012	4 - 6
BF4-F6143-00-P5	24 - 5	BF4-F8391-50	27 - 30	55D-H3358-00	30 - 7		20 - 6	90208-12808	12 - 33	91312-06025	25 - 11
BF4-F6143-00-P6	24 - 5	BF4-F8391-60	27 - 30		30 - 14	90109-068B5	26 - 10	90249-12008	24 - 26	91332-05010	19 - 11
BF4-F6145-00	24 - 8	BF4-F8391-70	27 - 30	2BR-H3371-00	36 - 12	90110-06846	7 - 16	90269-06816	19 - 16	91332-06020	28 - 3
B92-F6240-00	24 - 11	BF4-F8392-40	27 - 31	BF4-H3509-00	31 - 6	90110-06868	1 - 19	90280-03017	2 - 9		28 - 4
1VP-F6241-00	24 - 12	BF4-F8392-50	27 - 31	BF4-H3510-00	31 - 1	90111-06811	8 - 3	90340-12816	9 - 12		29 - 6
B92-F6246-00	24 - 13	BF4-F8392-60	27 - 31	BF4-H3511-00	31 - 2	90111-06865	27 - 11	90380-10803	12 - 27		34 - 12
B92-F6257-00	24 - 21	BF4-F8392-70	27 - 31	5LW-H3518-00	31 - 5	90111-08853	22 - 2	90380-15811	11 - 8	91332-06025	11 - 13
	26 - 17	BF4-F8393-40	27 - 32	2BR-H3550-00	31 - 9	90116-08843	9 - 11	90387-05820	16 - 19	91401-25015	26 - 24
2WB-F6280-00	24 - 14	BF4-F8393-50	27 - 32	54P-H3591-00	36 - 7	90119-06155	19 - 4	90387-064W3	7 - 29		26 - 32
5P2-F6281-00	24 - 27	BF4-F8393-60	27 - 32	1VP-H3606-00	31 - 7	90149-05801	1 - 10	90387-08820	26 - 14	91701-08035	26 - 23
5P2-F6282-00	24 - 28	BF4-F8393-70	27 - 32	1VP-H3645-00	31 - 4	90149-06309	35 - 7	90387-10837	21 - 7		26 - 31
2WB-F6290-00	24 - 15	2PH-H1410-10	28 - 2	5TL-H3912-20	34 - 7	90159-06810	16 - 21	90388-10800	14 - 4	91810-14809	1 - 17
BF4-F6301-00	24 - 16	2PH-H1450-20	28 - 1	5TL-H3922-00	34 - 13	90170-05803	3 - 9	90388-10805	9 - 5		1 - 18
1VB-F6351-00	24 - 19	1KP-H1617-00	29 - 3	1S8-H3955-01	34 - 2	90170-12800	12 - 34	90401-10015	25 - 2		9 - 9
B92-F637G-00	24 - 20	2SX-H1828-00	29 - 5	1KP-H3973-10	34 - 1	90170-12803	12 - 29	90430-06803	1 - 5		9 - 31
B92-F7111-00	26 - 1	2SX-H1830-00	29 - 4	1KP-H3976-10	34 - 5	90179-06411	24 - 25		9 - 15		9 - 36
2PH-F7112-00	26 - 2	1KP-H1847-00	29 - 2	54P-H3980-00	34 - 16	90179-12004	28 - 6	90430-10806	36 - 8		10 - 9
2PH-F7114-00	14 - 6	2SX-H1890-00	29 - 1	5TL-H3980-10	34 - 10	90179-25002	18 - 30	90430-12803	9 - 13	91A20-07065	19 - 15
1GC-F7121-00	9 - 3	2PH-H1940-01	35 - 14	1VP-H4147-00	32 - 4	90183-05807	15 - 6	90450-46803	7 - 32	92012-05008	35 - 4
54P-F7121-00	9 - 3	2BL-H1960-00	35 - 12	BF4-H4300-00	32 - 1		16 - 7	90464-07805	35 - 17	92012-05010	24 - 18
5LW-F7254-00	26 - 5	55D-H2100-00	35 - 1	1VP-H4314-00	32 - 2		16 - 10	90464-12810	36 - 4	92012-05016	24 - 17
B92-F7267-00	26 - 6	2CB-H2100-01	35 - 1	BF4-H4516-00	33 - 5		16 - 14	90464-16006	35 - 11	93102-15801	11 - 11
B92-F7311-00	26 - 12	BF4-H2115-00	35 - 2	BF4-H4710-00	33 - 1		16 - 18	90464-16807	36 - 10	93102-19814	9 - 22
B92-F7430-00	26 - 18	BF4-H2116-00	35 - 18	1VP-H4714-00	33 - 2		20 - 7	90464-34002	35 - 10	93102-19817	9 - 22
B92-F7431-00	26 - 19	5D9-H2126-00	19 - 14	BF4-H4716-00	33 - 6		24 - 2	90467-110A3	10 - 5	93102-20815	13 - 12
B92-F7432-00	26 - 20	BF4-H2129-00	20 - 8	BF4-H4721-00	33 - 4		24 - 6	90467-11825	9 - 8	93102-20816	13 - 12
B92-F7440-00	26 - 26	1VP-H2151-00	35 - 3	BF4-H4723-00	33 - 3		24 - 9	90467-12807	7 - 26	93102-25816	9 - 29
B92-F7441-00	26 - 27	1VB-H2176-00	20 - 20	2FC-H5111-00	36 - 15		26 - 9	90467-13808	7 - 35	93102-25819	9 - 29
B92-F7442-00	26 - 28	2PH-H2310-00	36 - 3	55D-H5130-00	36 - 14		27 - 2	90467-13858	7 - 36	93102-32801	13 - 6
BF4-F7481-00	26 - 7	2PH-H2370-10	36 - 6	2PH-H5546-00	36 - 2		27 - 5	90480-13013	7 - 30	93102-32809	13 - 6
1VB-F8100-00	20 - 21	1LB-H2566-01	35 - 15	2PH-H5752-00	19 - 8		27 - 15	90501-12743	26 - 21	93106-20808	21 - 3
B92-F8257-00	27 - 9	BF4-H2590-00	35 - 8	2SX-H591A-00	36 - 1		27 - 18		26 - 29	93210-07802	23 - 6
BF4-F8300-00	27 - 8	5TL-H2911-20	34 - 6	2DP-H592A-10	36 - 9		27 - 24	90501-16003	24 - 24	93210-09806	4 - 2
BF4-F8311-00	27 - 4	55D-H3311-00	30 - 2	5P0-W0041-00	25 - 5		33 - 9	90501-16004	6 - 6	93210-148H8	9 - 17
BF4-F8345-00	27 - 17		30 - 9	4C9-W0048-00	22 - 8	90185-05803	36 - 16	90506-12001	23 - 8	93210-16805	12 - 31
BF4-F8346-00	27 - 23		32 - 3	1VB-XH250-01	35 - 5	90185-10011	24 - 4	90506-15001	23 - 9	93210-29800	6 - 7
BF4-F8356-00	14 - 11	1VP-H3318-00	30 - 15	90101-06046	23 - 14	90185-16800	23 - 15	90506-20514	26 - 16	93210-29803	29 - 7
BF4-F835U-00-P0	27 - 21	55D-H3323-00	30 - 4	90101-08847	26 - 13	90201-10065	17 - 5	90506-35821	26 - 4	93210-35883	7 - 4
BF4-F835U-00-P3	27 - 21	55D-H332M-00	30 - 11	90105-07801	4 - 7	90201-10118	25 - 3	90508-32768	11 - 7	93211-07800	9 - 23
BF4-F835U-00-P4	27 - 21	55D-H3330-01	30 - 1	90105-088H4	17 - 2	90201-10831	14 - 10	90520-03806	20 - 9	93211-47801	9 - 30
BF4-F835V-00-P0	27 - 27	55D-H3333-00	30 - 6	90105-10831	22 - 13	90201-12028	17 - 4	90520-05819	5 - 5	93306-001X9	4 - 3
BF4-F835V-00-P3	27 - 27		30 - 13	90105-10896	24 - 3	90201-12823	28 - 5	90520-08004	26 - 8	93306-001YE	4 - 3
BF4-F835V-00-P4	27 - 27	55D-H333A-00	30 - 3	90105-108B2	14 - 7	90201-154E8	11 - 9	90520-08809	14 - 13	93306-201YK	13 - 10
B92-F8373-00	27 - 10	55D-H333E-01	30 - 5	90109-06255	34 - 14	90201-15846	12 - 35	90520-08812	19 - 19	93306-201YR	13 - 10
5P0-F8379-00	27 - 19	55D-H3340-01	30 - 8	90109-06814	34 - 8	90201-16810	23 - 16	90520-10825	7 - 31	93306-204XT	13 - 11
	27 - 25	55D-H334A-00	30 - 10	90109-068A3	27 - 7	90201-16817	12 - 36	90560-10292	21 - 2	93306-204XV	13 - 11
B92-F8385-00	27 - 12	55D-H334E-01	30 - 12	90109-068B4	15 - 2	90201-220J8	23 - 17	91312-05016	35 - 16	93306-252YB	12 - 26

NUMERICAL INDEX

PART NO.	REF. NO.	PART NO.	REF. NO.	PART NO.	REF. NO.	PART NO.	REF. NO.	PART NO.	REF. NO.	PART NO.	REF. NO.
93306-272YA	13 - 5	95E32-06014	24 - 23	99002-09600	26 - 3						
93306-300X8	21 - 4	95E32-06020	4 - 15	99009-15400	11 - 10						
93306-303YN	13 - 8		5 - 8	99009-15400	13 - 7						
93306-303YS	13 - 8		9 - 27	99009-35700	12 - 28						
93306-351Y5	13 - 2		10 - 21	99480-05010	9 - 25						
93306-372X5	2 - 7		36 - 5								
93310-528YP	2 - 3	95E32-06025	9 - 32								
93440-10153	1 - 3		35 - 13								
93450-14088	2 - 12	95E32-06035	9 - 33								
93501-04823	26 - 22		9 - 37								
	26 - 30		10 - 10								
93900-00817	21 - 6	95E32-06040	24 - 22								
	23 - 3	95E32-06045	10 - 20								
94107-14807	21 - 5	95E32-06060	9 - 10								
94108-14809	23 - 2	95E32-06070	9 - 26								
94568-J7092	4 - 9	97602-05208	35 - 6								
94700-00372	1 - 15	97602-05216	34 - 3								
95302-08600	1 - 14	97702-03012	33 - 7								
95302-10600	17 - 3	97702-50014	16 - 4								
95602-06100	34 - 9		16 - 12								
	34 - 15		16 - 16								
95602-08200	26 - 15		27 - 3								
95602-10200	14 - 9		27 - 26								
	21 - 9		32 - 5								
95612-08618	1 - 6	97702-60530	5 - 9								
95702-08500	8 - 5	97702-50012	20 - 10								
95702-10500	23 - 5		33 - 8								
95812-06040	9 - 14	97702-50014	27 - 20								
95D02-06010	14 - 12	97702-50016	16 - 2								
	18 - 32		16 - 6								
	18 - 34		16 - 9								
	18 - 36		16 - 13								
	36 - 13		16 - 17								
95D02-08030	26 - 25		24 - 7								
	26 - 33		24 - 10								
95D32-06016	5 - 11		26 - 11								
95D32-06020	10 - 17		27 - 6								
	20 - 18		27 - 13								
95D32-06025	7 - 15		27 - 16								
	7 - 33		27 - 22								
95D32-06035	7 - 6		27 - 28								
95D32-06045	7 - 7		31 - 8								
95D32-06090	10 - 18		34 - 4								
95D32-08055	8 - 6	97702-50025	7 - 27								
95E32-06010	1 - 4	98502-05020	6 - 3								
	10 - 8	98502-05025	24 - 29								
	20 - 13	98507-05010	20 - 16								
95E32-06012	35 - 9	9870M-03008	34 - 11								